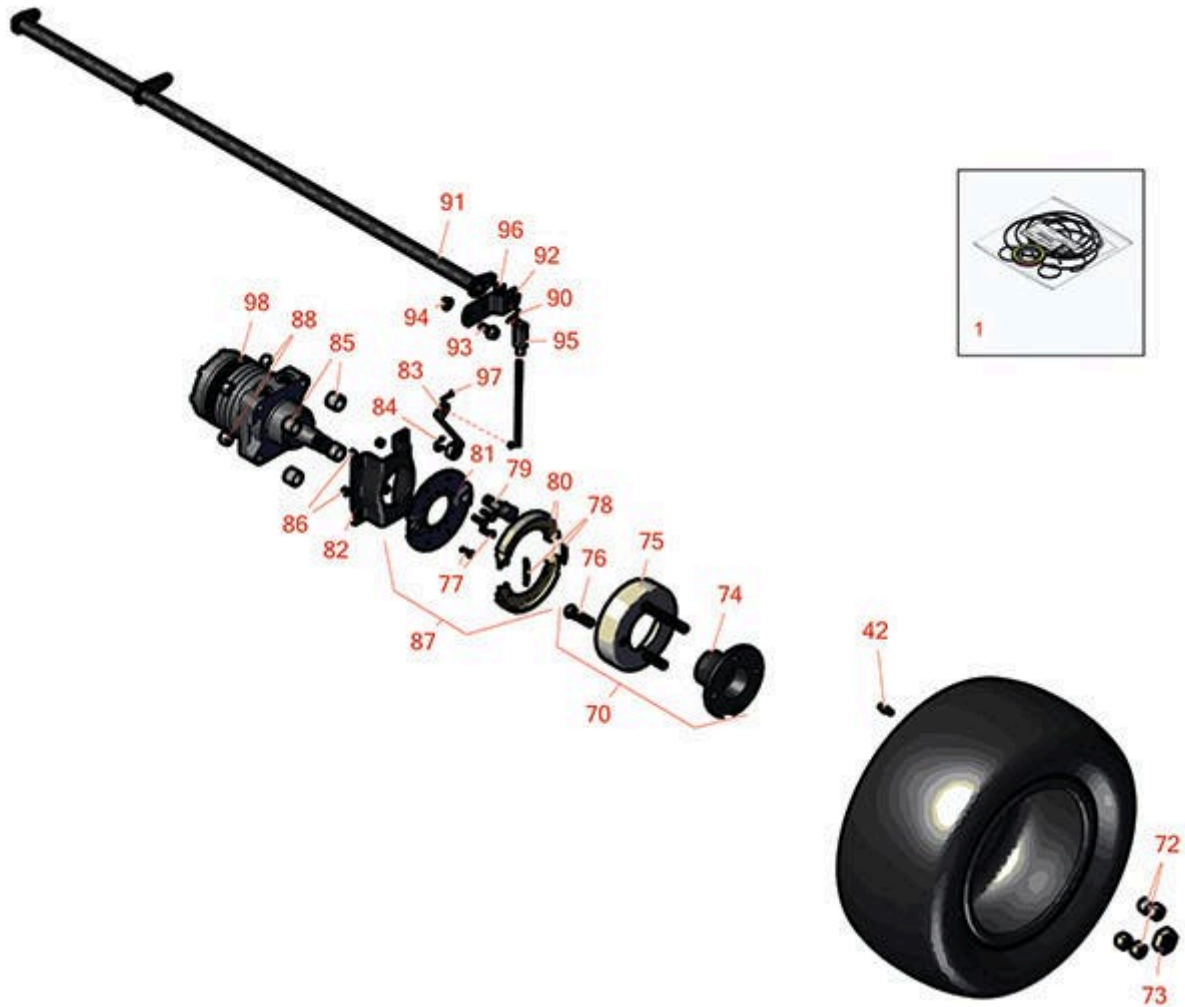




Replaces Toro Reelmaster 3550-D Parts

Traction Unit - Model 03910

Front Wheel



All original equipment manufacturers names and part numbers are used for identification purposes only, and we are in no way implying that our products are original equipment parts. Prices subject to change without notice.



Replaces Toro Reelmaster 3550-D Parts

Traction Unit - Model 03910

Front Wheel



Item No	R&R Part No.	OEM Part No.	Description	Qty Req	Price Each	Order Quantity
Overhaul Kits						
1	R76-0800	100-6131, 76-0800, 94-8178	Seal Kit - Hyd Wheel Motor	1	55.45	
42	R232-27	232-27, 232-31	Stem - Valve w/ Cap	2	4.15	
Other Parts Available						
70	R17-8149	17-8149	Wheel Hub Assy	2	145.15	
72	R242-50	242-50	Nut - 1/2-20 Wheel	8	1.50	
73	R26-3790	26-3790	Nut - Hex - Wheel Motor 1-20	2	14.75	
74	R93-6838-03	17-4710-03, 93-6838-03	Hub-Wheel	2	55.90	
75	R10-6850	10-6850	Drum - Brake	2	90.57	
75	R104-4809	104-4809	Drum - Brake	2	47.29	
76	R85-6540	85-6540	Stud - Drive 1/2-20 x 2	8	7.95	
77	R321-5	321-31, 321-5	Bolt - Hex HD 1/4-20 x 7/8	8	0.29	
78	R70-9880	70-9880	Spring - Brake Shoe	4	4.85	
79	R104-7707	104-7707, 104-7708, 70-9850, 70-9860	Cam - Brake	2	39.45	
80	R70-9840	70-9840	Shoe - Brake	4	23.65	
81	R70-9870	70-9870	Plate - Backing	2	111.80	
82	R84-2000-03	84-2000, 84-2000-03, 84-2000-0P	Bracket - Brake	2	27.10	

All original equipment manufacturers names and part numbers are used for identification purposes only, and we are in no way implying that our products are original equipment parts. Prices subject to change without notice.



Replaces Toro Reelmaster 3550-D Parts

Traction Unit - Model 03910

Front Wheel



Item No	R&R Part No.	OEM Part No.	Description	Qty Req	Price Each	Order Quantity
83	R93-6850	114-2726, 93-6850	Lever - Brake	2	32.80	
84	R150513	104-7706	E - Clip - Brake Assy	1	0.55	
85	R119-8238	119-8238	Spacer - Deck Pulley	8	4.65	
86	R301504	2296-42, 301504, 32127-24, 32128-33, 32146-17, 3296-16, 3296-42, 3296-42 , 915661P	Locknut - ESNA 1/4-20	8	0.18	
87	R71-1500	104-7705, 71-1500	Brake Assy	2	101.35	
88	RF5003	32127-29, 32131-5, 32132-5, 3296-23	Locknut - ESNA 1/2-13	4	0.78	
90	R3272-10	01-151-0120, 105-7512, 3272-10, N/A	Pin - Cotter 1/8 x 3/4	2	0.13	
91	R104-4625-03	104-4625-03	Brake Pivot Shaft	1	78.45	
92	R95-8683	95-8683	Bracket - Pivot	2	7.05	
93	R3234-11	3234-11	Bolt - Hex Washer HD	4	1.05	
94	R104-8301	104-8301, 104-9301, 109-6658, 133-7570	Locknut - 3/8-16 Nylon Flanged	2	0.84	
95	R282-2	1-303105, 282-2	Yoke	2	15.15	

All original equipment manufacturers names and part numbers are used for identification purposes only, and we are in no way implying that our products are original equipment parts. Prices subject to change without notice.



Replaces Toro Reelmaster 3550-D Parts

Traction Unit - Model 03910

Front Wheel



Item No	R&R Part No.	OEM Part No.	Description	Qty Req	Price Each	Order Quantity
96	R256-156	256-156, 256-219	Bushing - Flanged	2	6.80	
97	R1023-4	01-151-0150, 1023-4, 19-6220, 214-14, 215-54, 28-9-D, 3272-4, 3272-6, 513567, 932008P	Pin - Cotter 3/32 x 3/4	2	0.23	
98	R110-8785	110-8785	Hydraulic Motor - LH Wheel	1	945.25	
98	R110-8786	110-8786, 95-8693	Hydraulic Motor - RH Wheel	1	945.25	

All original equipment manufacturers names and part numbers are used for identification purposes only, and we are in no way implying that our products are original equipment parts. Prices subject to change without notice.