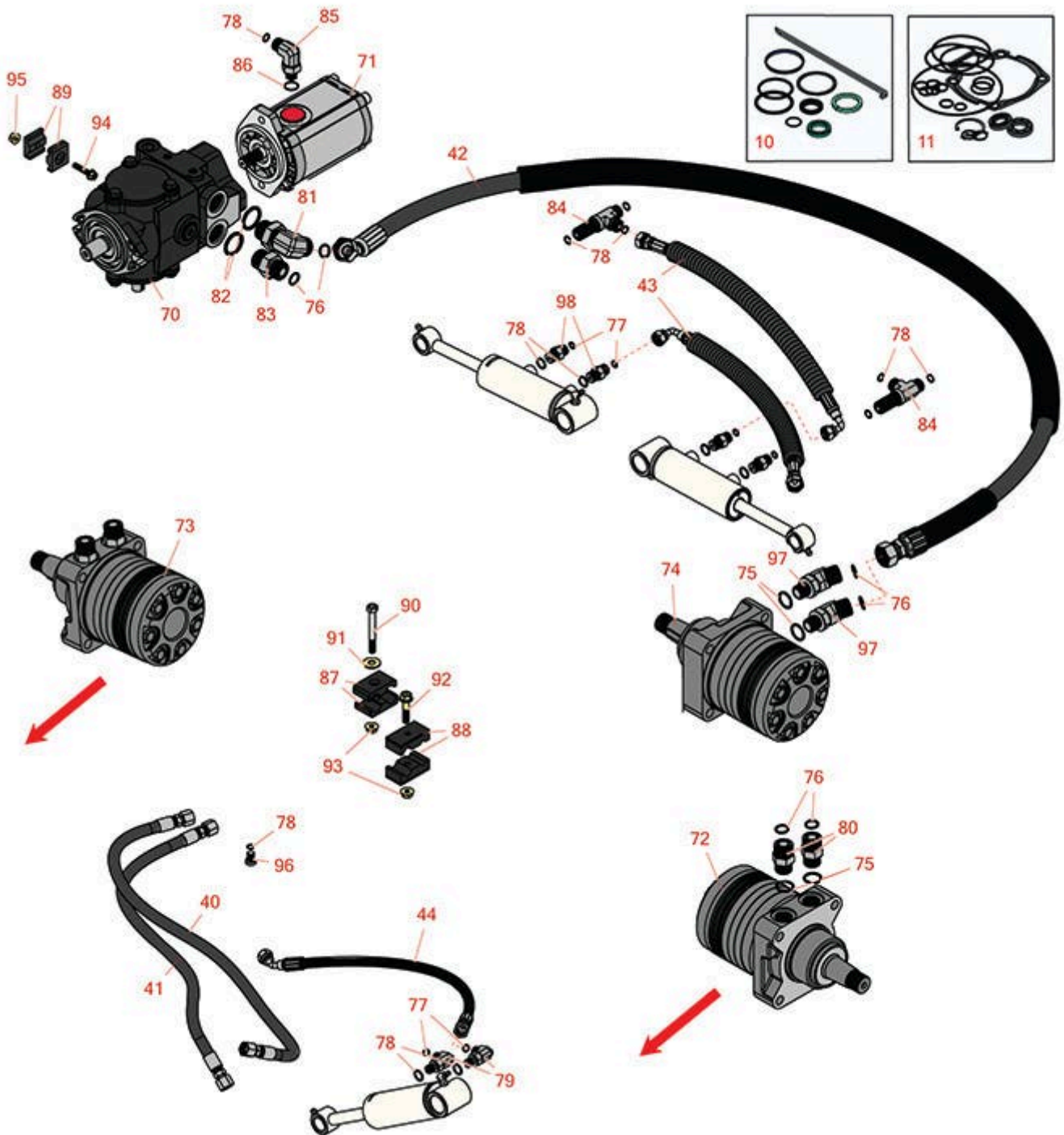




Replaces Toro Reelmaster 3550-D Parts

Traction Unit - Model 03910

Hydraulics



All original equipment manufacturers names and part numbers are used for identification purposes only, and we are in no way implying that our products are original equipment parts. Prices subject to change without notice.



Replaces Toro Reelmaster 3550-D Parts

Traction Unit - Model 03910

Hydraulics



Item No	R&R Part No.	OEM Part No.	Description	Qty Req	Price Each	Order Quantity
Overhaul Kits						
10	R119-6992	119-6992	Seal Kit - Fits R119-6987 & R119-6988 Cylinder	1	89.40	
11	R120-5754	120-5754	Seal Kit - Eaton Hydraulic Pump R104-4890	1	174.20	
Hoses						
40	R105-4347	105-4347	Hydraulic Hose Assy	1	56.05	
41	R112-9193	112-9193	Hydraulic Hose Assy	1	50.75	
42	R105-1212	100-4877, 105-1212	Hydraulic Hose Assy	1	162.75	
43	R119-2065	119-2065	Hydraulic Hose Assy	2	55.80	
44	R106-7974	106-7974	Hydraulic Hose Assy	1	51.15	
Other Parts Available						
70	R104-4890	104-4832, 104-4890	Pump - Piston	1	1937.30	
71	R121-7841	121-7841	Hydraulic Motor	1	835.40	
72	R110-8785	110-8785	Hydraulic Motor - LH Wheel	1	945.25	
73	R110-8786	110-8786, 95-8693	Hydraulic Motor - RH Wheel	1	945.25	
74	R95-8694	95-8694	Hydraulic Motor Assy - Rear	1	1127.60	
75	R237-80	237-80, 327-80	O-Ring	4	1.85	
76	R237-65	237-65, 237.65	O-Ring	6	0.65	
77	R237-21	237-21, 327-21	O-Ring	9	0.47	

All original equipment manufacturers names and part numbers are used for identification purposes only, and we are in no way implying that our products are original equipment parts. Prices subject to change without notice.



Replaces Toro Reelmaster 3550-D Parts

Traction Unit - Model 03910

Hydraulics



Item No	R&R Part No.	OEM Part No.	Description	Qty Req	Price Each	Order Quantity
78	R237-22	107-8844, 237-22, 237-78	O-Ring	18	0.62	
79	R340-132	340-132	Hydraulic Fitting - 90 Deg	6	14.40	
80	R340-7	340-7	Adapter	4	9.65	
81	R340-139	340-139	Hydraulic Fitting - 90 Deg	1	66.30	
82	R237-81	237-81, 237.81, 327-81	O-Ring	2	2.30	
83	R340-8	340-8	Adapter	1	10.60	
84	R340-68	340-120, 340-68	Fitting - Tee - Bulkhead	2	19.20	
85	R340-18	340-18	Hydraulic Fitting	1	20.95	
86	R237-79	237-79	O-Ring	1	1.50	
87	R56-7971	56-7971	Clamp - Tube	4	16.05	
88	R56-7970	56-7970	Plastic Clamp	2	11.25	
89	R56-7973	56-7973	Clamp - Tube	2	13.95	
90	R322-13	01-150-1680, 01-178-0522, 322-13, 3223-9	Screw - Hxx HD	2	2.45	

All original equipment manufacturers names and part numbers are used for identification purposes only, and we are in no way implying that our products are original equipment parts. Prices subject to change without notice.



Replaces Toro Reelmaster 3550-D Parts

Traction Unit - Model 03910

Hydraulics



Item No	R&R Part No.	OEM Part No.	Description	Qty Req	Price Each	Order Quantity
91	R453009	01-166-0400, 24-10-BD, 24-9-AD, 32-9650, 3256-2, 3256-23, 3256-3, 3256-67, 3290-217, 3556-3, 4-2390, 7-0152	Washer - Flat 5/16 SAE	2	0.13	
92	R115-1794	115-1794	Bolt - Hx HD Fl 5/16-18 x 1 1/2	1	1.55	
93	R104-8300	104-8300, 104-8300, 119-4041	Locknut - 5/16-18 Flanged Y/Zinc	3	0.47	
94	R3234-21	3234-21	Bolt - Hx HD Fl 1/4-20 x 1 1/4	1	1.95	
95	R104-7201	104-7201	Locknut - 1/4-20 ESNA Flanged	1	0.62	
96	R353-990	353-990	Plug	1	5.70	
97	R340-14	340-14, 96-0861	Hydraulic Fitting - 45 Deg	2	21.90	
98	R340-92	340-92	Hydraulic Fitting - Striaght	6	6.95	

All original equipment manufacturers names and part numbers are used for identification purposes only, and we are in no way implying that our products are original equipment parts. Prices subject to change without notice.