

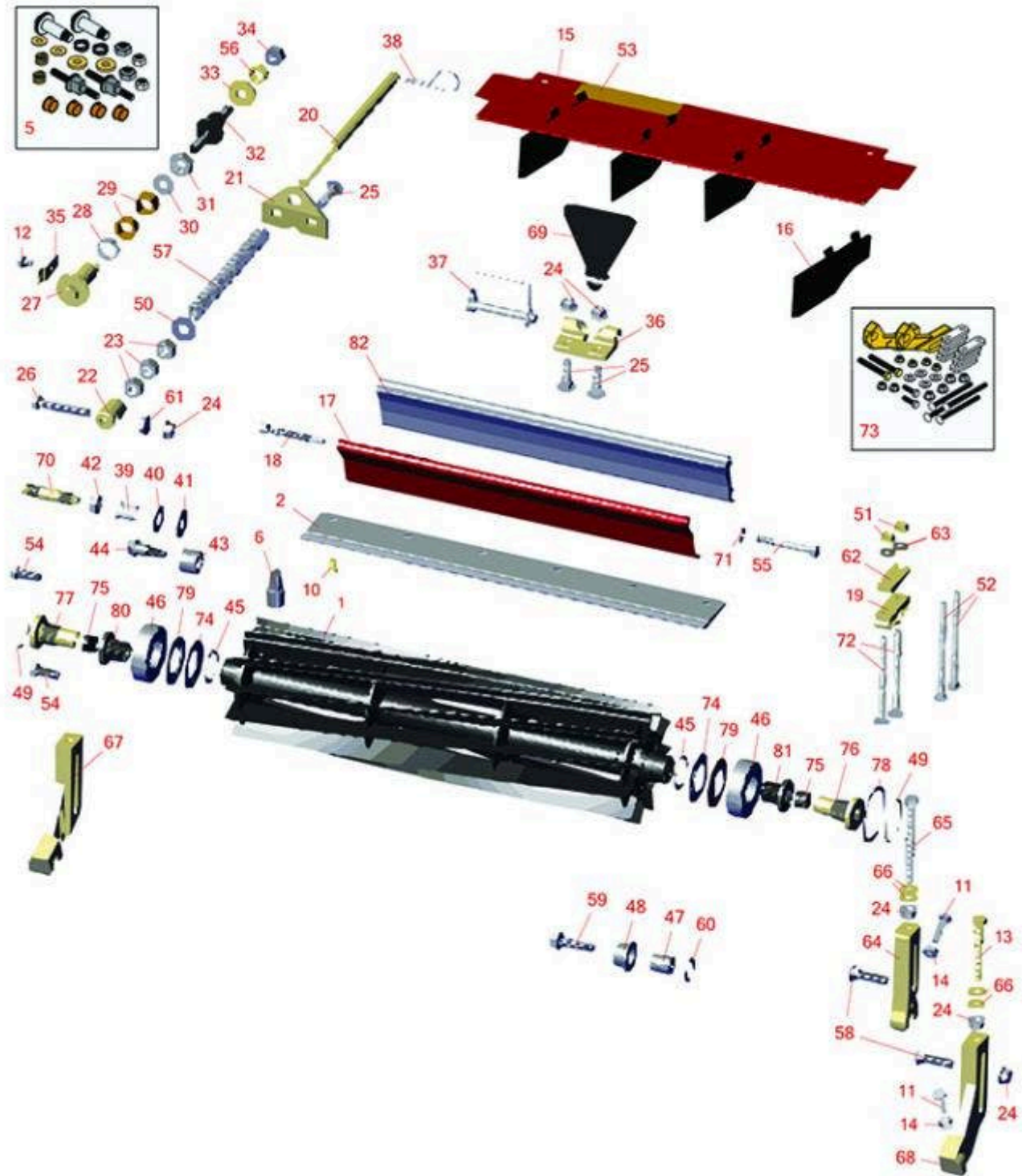


Replaces Toro Reelmaster 3550-D Parts

18in Cutting Unit - Model 03480, 03481, 03485, 03486,

03911 & 03912

Reel & Bedknife



All original equipment manufacturers names and part numbers are used for identification purposes only, and we are in no way implying that our products are original equipment parts. Prices subject to change without notice.



Replaces Toro Reelmaster 3550-D Parts

18in Cutting Unit - Model 03480, 03481, 03485, 03486,
03911 & 03912
Reel & Bedknife



| Item No | R&R Part No. | OEM Part No. | Description | Qty Req | Price Each | Order Quantity |
|---------|--------------|--------------|-------------|---------|------------|----------------|
|---------|--------------|--------------|-------------|---------|------------|----------------|

R&R Reels, Lifetime Guaranteed

| | | | | | | |
|---|------------------|------------------------------------|--|---|---------------|--|
| 1 | R131-3201 | 119-9150, 127-2053, 131-3201 | Reel - 8 Blade Radial 18x5 | 1 | 336.75 | |
| 1 | R133-0109 | 133-0109 | Reel - 8 Blade Razor Series Radial 18x5 | 1 | 316.05 | |
| 1 | R137-8406 | 137-8406 | Reel - 8 Blade Razor Series Radial w/Bearings and Seals 18x5 | 1 | 360.05 | |
| 1 | R131-3202 | 119-9154, 131-3202 | Reel - 11 Blade Radial 18x5 | 1 | 361.45 | |
| 1 | R133-0112 | 133-0112 | Reel - 11 Blade Razor Series Forward Swept 18x5 | 1 | 340.45 | |
| 1 | R137-8407 | 137-8407 | Reel - 11 Blade Razor Series Forward Swept w/Bearings and Seals 18x5 | 1 | 384.80 | |
| 1 | R137-8409 | 137-8409 | Reel - 11 Blade Radial with Bearings and Seals 18x5 | 1 | 384.80 | |

R&R Bedknives, Lifetime Guaranteed

| | | | | | | |
|---|------------------|----------|-------------------------------------|---|--------------|--|
| 2 | R121-3167 | 121-3167 | Bedknife - 6 Hole 18" Low Cut | 1 | 44.50 | |
| 2 | R121-3166 | 121-3166 | Bedknife - 6 Hole 18" Std (Fairway) | 1 | 44.50 | |

R&R Razor Tool Steel Bedknives, Lifetime Guaranteed

| | | | | | | |
|---|------------------|----------|--|---|--------------|--|
| 2 | R125-2770 | 125-2770 | Bedknife - Razor Tool Steel - 18 Low Cut | 1 | 97.55 | |
| 2 | R121-3165 | 121-3165 | Bedknife - Razor Tool Steel - 18 Fairway | 1 | 97.55 | |

Overhaul Kits & Service Tools

All original equipment manufacturers names and part numbers are used for identification purposes only, and we are in no way implying that our products are original equipment parts. Prices subject to change without notice.



Replaces Toro Reelmaster 3550-D Parts

18in Cutting Unit - Model 03480, 03481, 03485, 03486,
03911 & 03912
Reel & Bedknife



| Item No | R&R Part No. | OEM Part No. | Description | Qty Req | Price Each | Order Quantity |
|---|---------------------|--|-----------------------------------|---------|---------------|----------------|
| 5 | R120-7230 | 120-7230 | Overhaul Kit - Fits DPA Units | 1 | 180.50 | |
| <i>Tech Note: Incl 2 ea.: R108-0015, R115-7039, R119-4155, R120-5116, R120-5118, R120-5120, R3296-33, R3296-48 & 4 ea: R106-5344:</i> | | | | | | |
| 6 | R51-0880 | 51-0880 | Bedknife Screw Driver Tool | 1 | 35.65 | |
| Other Parts Available | | | | | | |
| 10 | R119-4151 | 119-4151 | Screw - Bedknife 5/16-18 x 17/32 | 6 | 0.29 | |
| 11 | R322-16 | 322-16, Apr-00 | Bolt - Hex HD 5/16-18 x 1-1/8 | 2 | 1.65 | |
| 12 | R114-9396 | 114-9396, 119-4067 | Bolt - Hex HD 5/16-18 x 3/8 | 2 | 1.45 | |
| 13 | R112-7451 | 100-9429, 112-7451 | Bolt - Hex Tap 3/8-16 x 2-3/4 | 2 | 1.95 | |
| 14 | R445722 | 30-8980, 32128-2, 32128-20, 32128-20, 445722 | Nut - Serrated Washer | 2 | 0.66 | |
| 15 | R112-1738 | 112-1738 | Front Grass Shield Assy | 1 | 34.25 | |
| 16 | R110-1706 | 110-1706 | Deflector | 4 | 3.40 | |
| 17 | R112-1735-01 | 112-1735-01 | Rear Shield Assy | 1 | 77.80 | |
| <i>Tech Note: Fits Models 03911 & 03912:</i> | | | | | | |
| 18 | R107-7773 | 107-7773 | Bolt - Soc HD Cap 5/16-18 x 2-1/2 | 1 | 7.50 | |
| 19 | R106-3924 | 106-3924 | Bracket - Rear Roller | 2 | 15.70 | |
| 20 | R107-2970 | 107-2970 | Rod - Spring | 1 | 23.45 | |
| 21 | R110-4069 | 110-4069 | Bracket | 1 | 7.05 | |

All original equipment manufacturers names and part numbers are used for identification purposes only, and we are in no way implying that our products are original equipment parts. Prices subject to change without notice.



Replaces Toro Reelmaster 3550-D Parts

18in Cutting Unit - Model 03480, 03481, 03485, 03486,
03911 & 03912
Reel & Bedknife



| Item No | R&R Part No. | OEM Part No. | Description | Qty Req | Price Each | Order Quantity |
|-------------------------------------|------------------|--|--------------------------------|---------|--------------|----------------|
| 22 | R99-8662 | 99-8662 | Tube - Spring | 1 | 11.55 | |
| 23 | R443818 | 01-191-0813, 3218-18, 3218-5, 3248-18 | Nut - 1/2-13 Hex Jam Zinc | 3 | 0.35 | |
| 24 | R104-8301 | 104-8301, 104-9301, 109-6658, 133-7570 | Locknut - 3/8-16 Nylon Flanged | 11 | 0.84 | |
| 25 | R3231-25 | 01-173-0610, 30-9970, 3231-25, 3231-3, 900064P | Bolt - Carriage 3/8-16 x 1-1/4 | 4 | 0.66 | |
| 26 | R104-3396 | 104-3396 | Bolt - Hex HD 3/8-16 x 2-1/4 | 1 | 1.55 | |
| 27 | R120-5118 | 120-5118 | Shaft - Adjuster | 2 | 31.05 | |
| <i>Tech Note: 2012 & Newer:</i> | | | | | | |
| 28 | R120-5116 | 120-5116 | Washer - Wave | 2 | 6.90 | |
| 29 | R106-5344 | 106-5344 | Bushing - Flanged and Keyed | 3 | 5.05 | |
| 30 | R108-0015 | 108-0015 | Washer - Flat | 2 | 1.20 | |
| 31 | R3296-33 | 3296-33 | Locknut - 5/8-18 ESNA Jam | 2 | 1.30 | |
| 32 | R115-7039 | 115-7039 | Screw - Adjuster - Bedbar | 2 | 29.85 | |
| 33 | R119-4155 | 119-4155 | Washer - Hardened | 2 | 7.50 | |
| 34 | R3296-48 | 119-4039, 32146-7, 3296-34, 3296-48 | Locknut - 7/16-14 ESNA | 2 | 0.55 | |
| 35 | R99-2097 | 99-2097 | Detent - Bed Bar Adjuster | 2 | 8.75 | |

All original equipment manufacturers names and part numbers are used for identification purposes only, and we are in no way implying that our products are original equipment parts. Prices subject to change without notice.



Replaces Toro Reelmaster 3550-D Parts

18in Cutting Unit - Model 03480, 03481, 03485, 03486,
03911 & 03912
Reel & Bedknife



| Item No | R&R Part No. | OEM Part No. | Description | Qty Req | Price Each | Order Quantity |
|---------|------------------|---|--------------------------|---------|--------------|----------------|
| 36 | R110-4058 | 110-4058 | Bracket - Chain | 1 | 19.40 | |
| 37 | R107-7400 | 107-7400 | Pin - Lynch | 1 | 6.95 | |
| 38 | R92-2762 | 92-2762 | Pin - Snap | 1 | 1.50 | |
| 39 | R56-9520 | 56-9520 | Bushing - Nyliner | 2 | 1.55 | |
| 40 | R61-1950 | 61-1950 | Washer - Nylon - Bed Bar | 2 | 0.64 | |
| 41 | R453017 | 01-166-0050, 01-166-0240, 01-166-0800, 24-13-AD, 24-14-AD, 32-8110, 3256-26, 3256-6, 453017, 69-8980, 87-7270 | Washer - Flat 1/2 | 2 | 0.28 | |
| 42 | R3296-28 | 119-4154, 140-9234, 32127-34, 32128-7, 32128-8, 32136-7, 3296-28 | Nut - 1/2-20 ESNA Jam | 2 | 1.25 | |
| 43 | R106-9618 | 106-9618 | Bushing - Rubber | 2 | 7.90 | |
| 44 | R107-2979 | 107-2979 | Bolt - Shoulder | 4 | 3.25 | |
| 45 | R92-2601 | 92-2601 | Snap Ring | 2 | 2.45 | |
| 46 | R115-3296 | 115-3296 | Bearing | 2 | 23.50 | |
| 47 | R108-4279 | 108-4279 | Spacer - Frame | 2 | 6.75 | |
| 48 | R93-2877 | 93-2877 | Bushing - Flanged | 2 | 3.65 | |
| 49 | R237-68 | 237-68 | O-Ring | 2 | 2.45 | |

All original equipment manufacturers names and part numbers are used for identification purposes only, and we are in no way implying that our products are original equipment parts. Prices subject to change without notice.



Replaces Toro Reelmaster 3550-D Parts

18in Cutting Unit - Model 03480, 03481, 03485, 03486,
03911 & 03912
Reel & Bedknife



| Item No | R&R Part No. | OEM Part No. | Description | Qty Req | Price Each | Order Quantity |
|---------|--------------------|--|-------------------------------------|---------|--------------|----------------|
| 50 | R87-7270-01 | 87-7270, 87-7270-01 | Washer - Flat 1/2 | 1 | 0.29 | |
| 51 | R104-8300 | 104-8300, 104-8300 , 119-4041 | Locknut - 5/16-18 Flanged Y/Zinc | 4 | 0.47 | |
| 52 | R3230-30 | 3230-30 | Bolt - Carriage 5/16x4 1/2 | 4 | 6.30 | |
| 53 | R93-6688 | 93-6688 | Decal - Warning | 1 | 2.30 | |
| 54 | R3234-11 | 3234-11 | Bolt - Hex Washer HD | 4 | 1.05 | |
| 55 | R322-14 | 01-150-0830, 01-178-0524, 30-8900, 322-14 | Bolt - Hex HD 5/16-18 x 3 GR5 | 1 | 2.15 | |
| 56 | R120-5120 | 120-5120 | Spring - Compression | 2 | 2.35 | |
| 57 | R112-1725 | 112-1725 | Spring - Compression | 1 | 11.50 | |
| 58 | R3231-4 | 01-157-0440, 01-173-0612, 3231-4 | Bolt - Carriage 3/8-16 x 1-1/2 | 2 | 1.20 | |
| 59 | R3234-19 | 3234-19 | Bolt - Hex Washer 3/8-16x1-3/4 | 2 | 1.75 | |
| 60 | R67-9410 | 67-9410 | Washer - Clevis Pin | 2 | 1.55 | |
| 61 | R32128-43 | 30-8990, 32128-43, 3290-357 | Nut - Flanged Whiz - 3/8-16 | 1 | 0.62 | |
| 62 | R119-0626 | 119-0626 | Shim - Roller - 1/4 in - Slotted | 8 | 5.45 | |
| 63 | R94-6936 | 94-6936, 94-9236 | Washer - Hardened - 5/16 SAE | 4 | 0.57 | |
| 64 | R125-2796 | 125-2796 | Bracket- Front HOC | 2 | 36.60 | |

Tech Note: Fits 2013 & Newer:

All original equipment manufacturers names and part numbers are used for identification purposes only, and we are in no way implying that our products are original equipment parts. Prices subject to change without notice.



Replaces Toro Reelmaster 3550-D Parts

18in Cutting Unit - Model 03480, 03481, 03485, 03486,
03911 & 03912
Reel & Bedknife



| Item No | R&R Part No. | OEM Part No. | Description | Qty Req | Price Each | Order Quantity |
|--|---------------------|--|-------------------------------|---------|--------------|----------------|
| 65 | R107-4026 | 107-4026 | Bolt - Hex Tap 3/8-16 x 3-3/4 | 2 | 6.25 | |
| 66 | R453011 | 01-166-0100, 01-166-0120, 01-166-0270, 01-166-0500, 01-166-0600, 01-166-0620, 132-4593, 2356-3, 237-12, 24-10-AD, 24-11-AD, 24-11-BD, 24-12-AD, 24-12-BD, 30-9310, 32-8190, 3256-24, 3256-3, 3256-36, 3256-4, 453011, 47-9950, 48-9220, 513458, 7-0052 | Washer - Flat 3/8 SAE Y/Zinc | 4 | 0.11 | |
| 67 | R120-0405 | 120-0405 | Bracket - High HOC - RH | 1 | 53.80 | |
| <i>Tech Note: Fits 2011 & Newer:</i> | | | | | | |
| 68 | R120-0404 | 120-0404 | Bracket- High HOC - LH | 1 | 53.80 | |
| <i>Tech Note: Fits 2011 & Newer:</i> | | | | | | |
| 69 | R110-4088-03 | 110-4088-03, 119-8010-03 | Kickstand | 1 | 21.25 | |
| 70 | R120-9941 | 120-9941 | Bolt- Bedbar | 2 | 17.90 | |
| 71 | R3256-74 | 3256-74 | Washer - Flat | 1 | 0.65 | |
| 72 | R106-9758 | | Bolt - Carriage 5/16x4 | 2 | 1.55 | |

All original equipment manufacturers names and part numbers are used for identification purposes only, and we are in no way implying that our products are original equipment parts. Prices subject to change without notice.



Replaces Toro Reelmaster 3550-D Parts

18in Cutting Unit - Model 03480, 03481, 03485, 03486,
03911 & 03912
Reel & Bedknife



| Item No | R&R Part No. | OEM Part No. | Description | Qty Req | Price Each | Order Quantity |
|---|------------------|-----------------------|------------------------------|---------|---------------|----------------|
| 73 | R110-9600 | 110-9600 | High HOC Kit | 1 | 162.75 | |
| <i>Tech Note: Includes 1 ea.: R120-0404, R120-0405 & 2 ea: R112-7451, R322-16, R445722 & 4 ea.: R106-9758, R104-8300, R453011, R104-8301 & 8 ea: R106-3925:</i> | | | | | | |
| 74 | R121-6953 | 121-6953 | Washer - Rubber - Special | 2 | 3.55 | |
| 75 | R125-5609 | 125-5609 | Plug - Plastic | 2 | 1.75 | |
| 76 | R125-2772 | 125-2772 | Insert Assy - LH | 1 | 52.45 | |
| 77 | R125-2773 | 125-2773 | Insert Assy - RH | 1 | 52.45 | |
| 78 | R105-5700 | 105-5700, 115-5258 | Wave Washer - Bearing | 1 | 2.55 | |
| 79 | R115-3299 | 115-3299 | Seal- Flocked | 2 | 11.40 | |
| 80 | R130-0063 | 130-0063 | Insert-Threaded, 5 Inch (RH) | 1 | 26.80 | |
| 81 | R130-0064 | 130-0064 | Insert-Threaded, 5 Inch (LH) | 1 | 26.80 | |
| 82 | R125-2099 | 125-2099 | Grass Shield - Rear | 1 | 43.55 | |

Tech Note: Fits Models 03480/03481/03485/03486:

All original equipment manufacturers names and part numbers are used for identification purposes only, and we are in no way implying that our products are original equipment parts. Prices subject to change without notice.