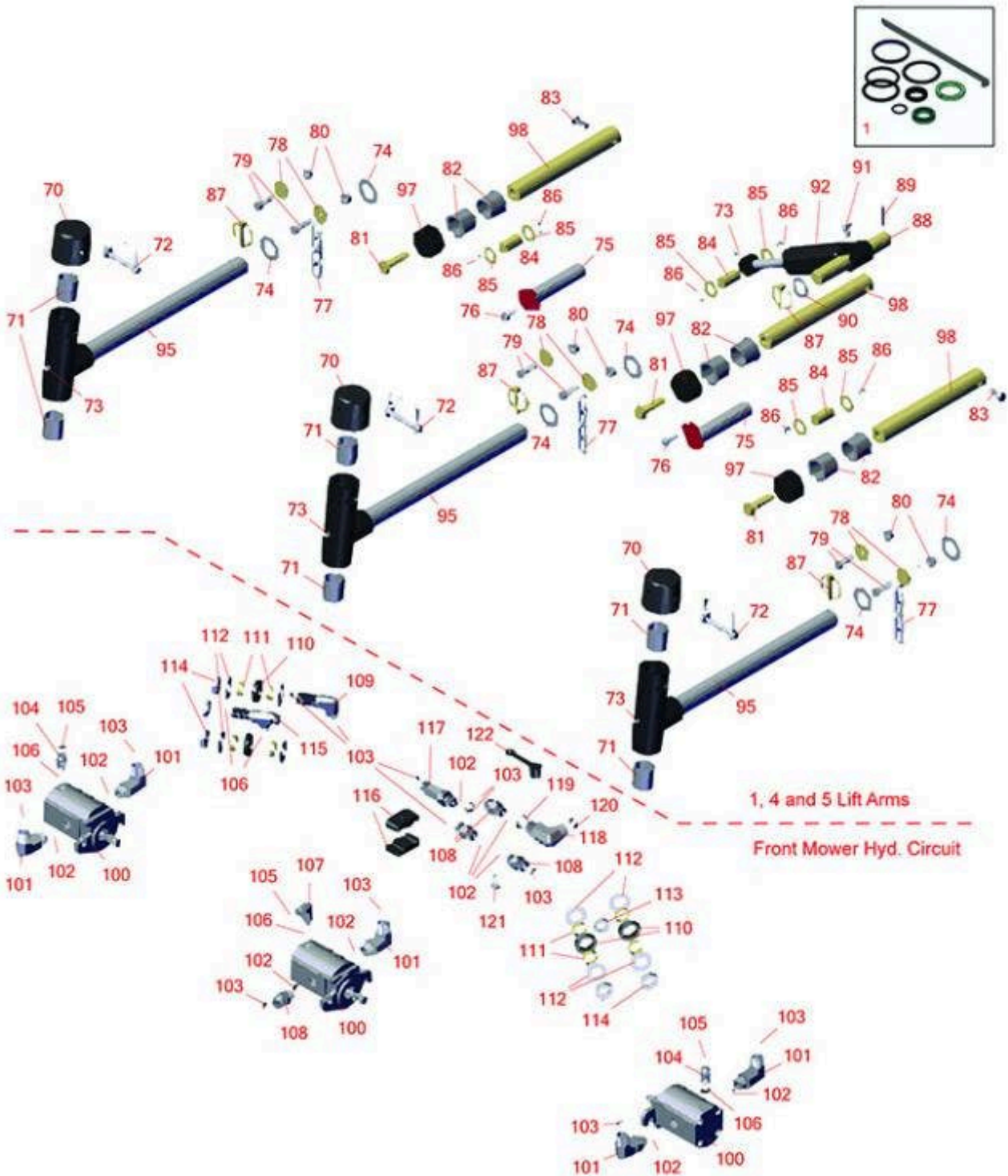




# Replaces Toro Reelmaster 3550-D Parts

Traction Unit - Model 03910  
1, 4 & 5 Lift Arms & Hydraulics



All original equipment manufacturers names and part numbers are used for identification purposes only, and we are in no way implying that our products are original equipment parts. Prices subject to change without notice.



# Replaces Toro Reelmaster 3550-D Parts

Traction Unit - Model 03910  
1, 4 & 5 Lift Arms & Hydraulics



Item No	R&R Part No.	OEM Part No.	Description	Qty Req	Price Each	Order Quantity
<b>Overhaul Kit</b>						
1	<b>R133-2900</b>	133-2900	Seal Kit - Fits R119-6987 & R119-6988 Cylinders	1	<b>89.40</b>	
<b>Other Parts Available</b>						
70	<b>R107-4027</b>	107-4027	Cap - Pivot Yoke	3	<b>14.25</b>	
71	<b>R121-3187</b>	121-3187	Bushing	6	<b>6.50</b>	
72	<b>R107-7400</b>	107-7400	Pin - Lynch	3	<b>6.95</b>	
73	<b>R302-5</b>	21-6010, 302-11, 302-37, 302-47, 302-5, 302-57, 302-58, 302-6, 31-0300, 32-9660, 60-0800, 62-3880, 92-4181	Fitting - Grease	6	<b>0.27</b>	
74	<b>R120-2183</b>	120-2183	Washer - Thrust	6	<b>3.75</b>	
75	<b>R10-6090</b>	10-6090	Pin - Pivot 4 7/8 Long	2	<b>24.65</b>	
76	<b>R32144-11</b>	32104-23, 32104-31, 32104-83, 32140-69, 32140-82, 32144-11	Bolt - 5/16-18 x 1 Hx Fl Tf	2	<b>1.60</b>	
77	<b>R84-2450</b>	84-2450	Chain - Straight 4	3	<b>4.55</b>	
78	<b>R63-8410</b>	53-6380, 63-4810, 63-8410	Washer - Isolator Bushing	6	<b>0.77</b>	

All original equipment manufacturers names and part numbers are used for identification purposes only, and we are in no way implying that our products are original equipment parts. Prices subject to change without notice.



# Replaces Toro Reelmaster 3550-D Parts

*Traction Unit - Model 03910  
1, 4 & 5 Lift Arms & Hydraulics*



Item No	R&R Part No.	OEM Part No.	Description	Qty Req	Price Each	Order Quantity
79	<b>R400264</b>	01-150-0180, 01-178-0610, 20-48-AD, 20-48-AGD, 32-9160, 3224-3, 323-29, 323-7, 400264, 908035P	Bolt - Hex HD 3/8-16 x 1-1/4	6	<b>0.40</b>	
80	<b>R104-8301</b>	104-8301, 104-9301, 109-6658, 133-7570	Locknut - 3/8-16 Nylon Flanged	6	<b>0.84</b>	
81	<b>R3234-27</b>	3234-27	Bolt - 1/2-13 x 2 Hex	3	<b>5.35</b>	
82	<b>R104-0015</b>	104-0015, 104-8339	Bushing - Flanged	6	<b>5.15</b>	
83	<b>R323-6</b>	01-150-0010, 01-178-0608, 20-47-AD, 20-47-AGD, 3224-2, 323-6, 49-3510, 908034P, 908332	Bolt - Hex HD 3/8-16 x 1 GR5 YZ	3	<b>0.59</b>	
84	<b>R120-9219</b>	120-9219	Pin - Cylinder	2	<b>9.95</b>	
85	<b>R3-6498</b>	3--6498, 3-6498, 47-8270	Washer - Thrust	6	<b>4.10</b>	
86	<b>R458013</b>	30-0580, 32120-72, 458013, 93-2525, 936125	Ring - Retaining	6	<b>0.54</b>	
87	<b>R92-1298</b>	92-1298	Pin - Klik	3	<b>2.45</b>	
88	<b>R120-2158</b>	120-2158	Pin	1	<b>23.20</b>	

All original equipment manufacturers names and part numbers are used for identification purposes only, and we are in no way implying that our products are original equipment parts. Prices subject to change without notice.



# Replaces Toro Reelmaster 3550-D Parts

*Traction Unit - Model 03910  
1, 4 & 5 Lift Arms & Hydraulics*



Item No	R&R Part No.	OEM Part No.	Description	Qty Req	Price Each	Order Quantity
89	<b>R32121-15</b>	21-7710, 32-8880, 32121-15	Pin - Roll 1/4 x 1-1/2	1	<b>1.05</b>	
90	<b>R10-8110</b>	10-8110	Washer - Pivot Pin	1	<b>0.99</b>	
91	<b>R471219</b>	30-8360, 302-2, 302-24, 302-31, 302-52, 471219	Zerk - Grease	1	<b>0.41</b>	
92	<b>R119-6988</b>	119-6988	Hydraulic Cylinder	1	<b>349.60</b>	
95	<b>R127-8477</b>	127-8477	Pivot Yoke Assy	3	<b>274.20</b>	
97	<b>R121-7855</b>	121-7855	Bumper - Recessed	3	<b>7.30</b>	
98	<b>R120-2084</b>	120-2084	Pin - Lift Arm	3	<b>42.37</b>	
100	<b>R120-2072</b>	100-6426, 108-6487, 112-9200, 120-2072, 93-1375	Hydraulic Gear Motor	3	<b>360.90</b>	
101	<b>R340-98</b>	340-98	Hydraulic Fitting	5	<b>15.60</b>	
102	<b>R237-79</b>	237-79	O-Ring	6	<b>1.50</b>	
103	<b>R237-30</b>	23-6320, 237-30	O-Ring - Seal	5	<b>0.78</b>	
104	<b>R340-92</b>	340-92	Hydraulic Fitting - Striaight	2	<b>6.95</b>	
105	<b>R237-21</b>	237-21, 327-21	O-Ring	3	<b>0.47</b>	
106	<b>R237-22</b>	107-8844, 237-22, 237-78	O-Ring	4	<b>0.62</b>	
107	<b>R340-132</b>	340-132	Hydraulic Fitting - 90 Deg	1	<b>14.40</b>	

All original equipment manufacturers names and part numbers are used for identification purposes only, and we are in no way implying that our products are original equipment parts. Prices subject to change without notice.



## Replaces Toro Reelmaster 3550-D Parts

*Traction Unit - Model 03910  
1, 4 & 5 Lift Arms & Hydraulics*



Item No	R&R Part No.	OEM Part No.	Description	Qty Req	Price Each	Order Quantity
108	<b>R340-4</b>	340-4	Hydraulic Fitting - Male Connector	5	<b>7.95</b>	
109	<b>R93-9151</b>	93-9151	Hydraulic Fitting	1	<b>25.40</b>	
110	<b>R240-5</b>	240-5	Grommet - Rubber	4	<b>7.90</b>	
111	<b>R69-8960</b>	69-8960	Spacer	8	<b>5.65</b>	
112	<b>R69-8930</b>	69-8930	Washer	8	<b>1.75</b>	
113	<b>R340-70</b>	340-70	Nut - Lock	2	<b>2.30</b>	
114	<b>R340-127</b>	340-127	Nut - Bulkhead	4	<b>5.95</b>	
115	<b>R340-68</b>	340-120, 340-68	Fitting - Tee - Bulkhead	1	<b>19.20</b>	
116	<b>R56-7976</b>	56-7976	Clamp - Tube	2	<b>7.15</b>	
117	<b>R340-109</b>	340-109	Hydraulic Fitting - Run Tee	1	<b>28.80</b>	
118	<b>R340-17</b>	340-17	No 10 Male Orfs x No 10 Male Orb	1	<b>23.45</b>	
119	<b>R237-80</b>	237-80, 327-80	O-Ring	1	<b>1.85</b>	
120	<b>R237-65</b>	237-65, 237.65	O-Ring	1	<b>0.65</b>	
121	<b>R3234-7</b>	3234-7	Bolt - Hex Washer HD 5/16-18 x 5/8	2	<b>1.30</b>	
122	<b>R354-79</b>	354-79	Cap-Dust	1	<b>4.85</b>	

All original equipment manufacturers names and part numbers are used for identification purposes only, and we are in no way implying that our products are original equipment parts. Prices subject to change without notice.