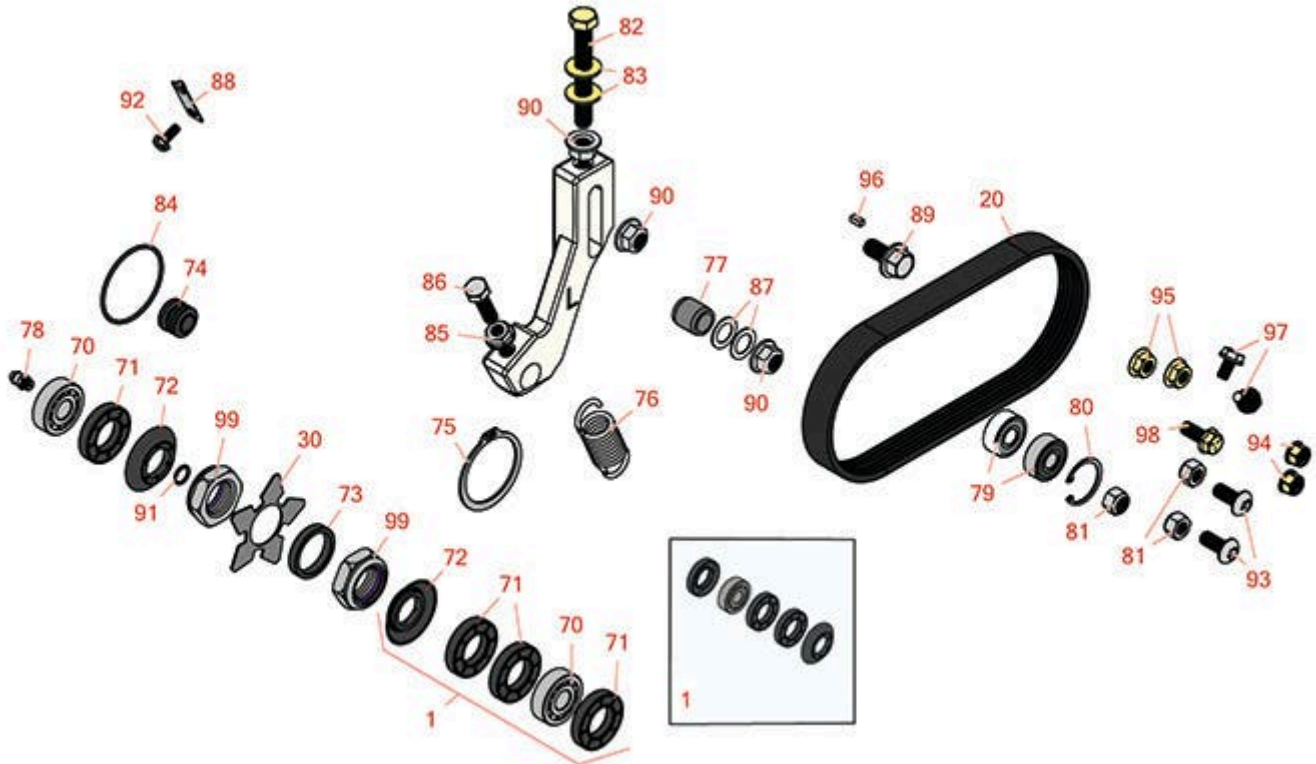




Replaces Toro Reelmaster 3550-D Parts

18in Cutting Unit - Model 03480, 03481, 03485, 03486,
03911 & 03912

Groomer - Model 03914 & 03915



All original equipment manufacturers names and part numbers are used for identification purposes only, and we are in no way implying that our products are original equipment parts. Prices subject to change without notice.



Replaces Toro Reelmaster 3550-D Parts

18in Cutting Unit - Model 03480, 03481, 03485, 03486,
03911 & 03912

Groomer - Model 03914 & 03915



Item No	R&R Part No.	OEM Part No.	Description	Qty Req	Price Each	Order Quantity
Overhaul Kits and Service Tools						
1	R110-4086	110-4086	Kit - Bearing	1	54.10	
<i>Tech Note: Includes 1 ea: R95-0707 Bearing, R108-4172 Seal; & 3 ea: R106-8530 Seal:</i>						
Belts						
20	R108-4497	108-4497	Belt- Groomer	1	8.20	
Verti-Cut Blades						
30	R112-6963	112-6963	Blade - Groomer	32	3.55	
Other Parts Available						
70	R95-0707	95-0707	Bearing - Self Aligning	2	24.85	
71	R106-8530	106-8530	Seal - Oil	4	9.05	
72	R108-4172	108-4172	Seal - Excluder	2	5.15	
73	R70-1350	70-1350	Spacer - 1/4 Fits Groomer Shaft	2	0.83	
74	R125-5609	125-5609	Plug - Plastic	1	1.75	
75	R32151-95	32151-90, 32151-95	Retaining Ring	1	3.05	
76	R110-1700	110-1700, 66-4460	Spring-Extension	1	4.55	
77	R108-4491	108-4491	Spacer - Hardened	1	4.95	

All original equipment manufacturers names and part numbers are used for identification purposes only, and we are in no way implying that our products are original equipment parts. Prices subject to change without notice.



Replaces Toro Reelmaster 3550-D Parts

18in Cutting Unit - Model 03480, 03481, 03485, 03486,
03911 & 03912

Groomer - Model 03914 & 03915



Item No	R&R Part No.	OEM Part No.	Description	Qty Req	Price Each	Order Quantity
78	R302-5	21-6010, 302-11, 302-37, 302-47, 302-5, 302-57, 302-58, 302-6, 31-0300, 32-9660, 60-0800, 62-3880, 92-4181	Fitting - Grease	2	0.27	
79	R110-1701	110-1701	Bearing	2	12.50	
80	R32151-60	32151-60	Ring - Snap	1	1.05	
81	R3296-47	3296-47	Locknut - 5/16-18 Jam Nyloc	4	0.59	
82	R112-7451	100-9429, 112-7451	Bolt - Hex Tap 3/8-16 x 2-3/4	2	1.95	

All original equipment manufacturers names and part numbers are used for identification purposes only, and we are in no way implying that our products are original equipment parts. Prices subject to change without notice.



Replaces Toro Reelmaster 3550-D Parts

18in Cutting Unit - Model 03480, 03481, 03485, 03486,
03911 & 03912

Groomer - Model 03914 & 03915



Item No	R&R Part No.	OEM Part No.	Description	Qty Req	Price Each	Order Quantity
83	R453011	01-166-0100, 01-166-0120, 01-166-0270, 01-166-0500, 01-166-0600, 01-166-0620, 132-4593, 2356-3, 237-12, 24-10-AD, 24-11-AD, 24-11-BD, 24-12-AD, 24-12-BD, 30-9310, 32-8190, 3256-24, 3256-3, 3256-36, 3256-4, 453011, 47-9950, 48-9220, 513458, 7-0052	Washer - Flat 3/8 SAE Y/Zinc	4	0.11	
84	R112-6968	112-6968	O-Ring	2	1.95	
85	R445722	30-8980, 32128-2, 32128-20, 32128-20, 445722	Nut - Serrated Washer	2	0.66	
86	R322-16	322-16, Apr-00	Bolt - Hex HD 5/16-18 x 1-1/8	2	1.65	
87	R112-6957	112-6957	Washer - Hardened	2	1.25	
88	R104-4754	104-4754	Spring-Detent	2	15.90	
89	R110-1718	110-1718	Screw-HHF	1	1.10	

All original equipment manufacturers names and part numbers are used for identification purposes only, and we are in no way implying that our products are original equipment parts. Prices subject to change without notice.



Replaces Toro Reelmaster 3550-D Parts

18in Cutting Unit - Model 03480, 03481, 03485, 03486,
03911 & 03912

Groomer - Model 03914 & 03915



Item No	R&R Part No.	OEM Part No.	Description	Qty Req	Price Each	Order Quantity
90	R104-8301	104-8301, 104-9301, 109-6658, 133-7570	Locknut - 3/8-16 Nylon Flanged	2	0.84	
91	R237-22	107-8844, 237-22, 237-78	O-Ring	1	0.62	
92	R32144-73	104-2065, 32144-73	Screw - Machine Hex Washer Head	2	0.39	
93	R3274-55	3274-55	Bolt - 5/16-18 x 3/4 Button HD Soc	2	0.94	
94	R104-7201	104-7201	Locknut - 1/4-20 ESNA Flanged	2	0.62	
95	R104-8300	104-8300, 104-8300, 119-4041	Locknut - 5/16-18 Flanged Y/Zinc	2	0.47	
96	R95-9619	95-9619	Key - Square 1/8 x 1/8 x 5/16	1	0.91	
97	R3234-13	3234-13, 960151P	Bolt - Flanged Hex 1/4-20	2	0.77	
98	R3234-47	3234-47	Bolt - Flanged Hx HD	1	0.97	
99	R32127-46	32127-46, 3296-60	Locknut	2	2.85	

All original equipment manufacturers names and part numbers are used for identification purposes only, and we are in no way implying that our products are original equipment parts. Prices subject to change without notice.