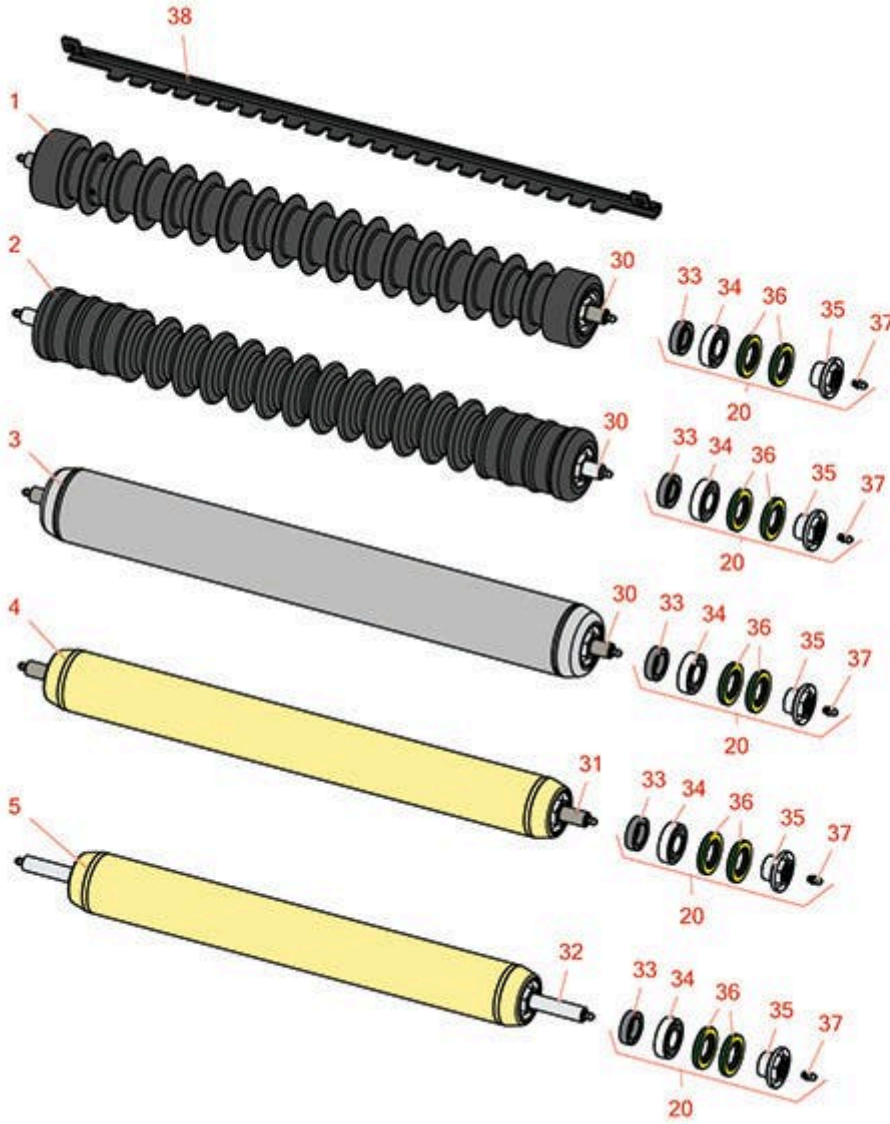




# Replaces Toro Reelmaster 3550-D Parts

22in Cutting Unit - Model 03913, 03482, 03483, 03487,  
03488 & 03489

Rollers



All original equipment manufacturers names and part numbers are used for identification purposes only, and we are in no way implying that our products are original equipment parts. Prices subject to change without notice.



# Replaces Toro Reelmaster 3550-D Parts

22in Cutting Unit - Model 03913, 03482, 03483, 03487,  
03488 & 03489  
Rollers



Item No	R&R Part No.	OEM Part No.	Description	Qty Req	Price Each	Order Quantity
---------	--------------	--------------	-------------	---------	------------	----------------

## R&R Rollers Available

1	<b>R1503911</b>	110-4050, 114-5400, 114-5421	Roller - Fusion Grooved UHMW Polyethylene	1	<b>330.90</b>	
---	-----------------	------------------------------------	--	---	---------------	--

*Tech Note:* Fusion Rollers combine the best features of our UHMW plastic rollers with a heavy-duty internal bearing system. Machined from solid UHMW plastic that prevents build-up of debris. This roller has a patented deep groove design and ... <Click Part# for more>:

2	<b>R1503915</b>	110-9608, 114-5421	Roller - Fusion Grooved UHMW Polyethylene Shoulder	1	<b>330.90</b>	
---	-----------------	-----------------------	--	---	---------------	--

*Tech Note:* Fusion Rollers combine the best features of our UHMW plastic rollers with a heavy-duty internal bearing system. Machined from solid UHMW plastic that prevents build-up of debris. This roller has a patented deep groove design in t... <Click Part# for more>:

3	<b>R114-5412</b>	114-5412	Roller - Smooth Tubular Steel	1	<b>256.10</b>	
---	------------------	----------	----------------------------------	---	---------------	--

*Tech Note:* Constructed with a through shaft, this heavy-duty roller uses greasable stainless ball bearings. (2008 & Up):

4	<b>R114-5404</b>	114-5404, 137-6107	Roller - Smooth Tubular Steel - Long	1	<b>171.05</b>	
---	------------------	-----------------------	---	---	---------------	--

*Tech Note:* Constructed with a through shaft, this heavy-duty roller uses greasable stainless ball bearings. (2006 - 2007):

5	<b>R114-5406</b>	114-5406	Roller - Smooth Tubular Steel - Short	1	<b>252.85</b>	
---	------------------	----------	--	---	---------------	--

*Tech Note:* Constructed with a through shaft, this heavy-duty roller uses greasable stainless ball bearings. (2008 & Up):

## Overhaul Kit

20	<b>R114-5430</b>	114-5430	Overhaul Kit - Roller	1	<b>82.40</b>	
----	------------------	----------	-----------------------	---	--------------	--

*Tech Note:* Includes 4 ea.: R112-7494 Seals; 2 ea.: R302-5 Grease Zerks, R114-3717 Seals, R112-5290 Bearings & R114-3745 Locknuts:

## Other Parts Available

All original equipment manufacturers names and part numbers are used for identification purposes only, and we are in no way implying that our products are original equipment parts. Prices subject to change without notice.



# Replaces Toro Reelmaster 3550-D Parts

22in Cutting Unit - Model 03913, 03482, 03483, 03487,  
03488 & 03489  
Rollers



Item No	R&R Part No.	OEM Part No.	Description	Qty Req	Price Each	Order Quantity
30	<b>R114-5403</b>	114-5403	Shaft - Front Roller	1	<b>49.60</b>	
31	<b>R114-5407</b>	114-5407	Shaft - Long Rear Roller	1	<b>58.75</b>	
32	<b>R114-5410</b>	114-5410	Shaft - Short - Rear Roller	1	<b>58.75</b>	
33	<b>R114-3717</b>	114-3717	Seal	2	<b>2.35</b>	
34	<b>R112-5290</b>	112-5290, 251--346, 251-346, 72-5430	Bearing - Stainless	2	<b>10.30</b>	
35	<b>R114-3745</b>	114-3745, 114-5411	Locknut - Bearing - Stainless	2	<b>19.15</b>	
36	<b>R112-7494</b>	112-7494	Seal	4	<b>5.15</b>	
37	<b>R302-5</b>	21-6010, 302-11, 302-37, 302-47, 302-5, 302-57, 302-58, 302-6, 31-0300, 32-9660, 60-0800, 62-3880, 92-4181	Fitting - Grease	2	<b>0.27</b>	
38	<b>R107-2993-03</b>	107-2993-03	Scraper - Fits Toro Plastic Gr Roller Only	1	<b>26.85</b>	

All original equipment manufacturers names and part numbers are used for identification purposes only, and we are in no way implying that our products are original equipment parts. Prices subject to change without notice.