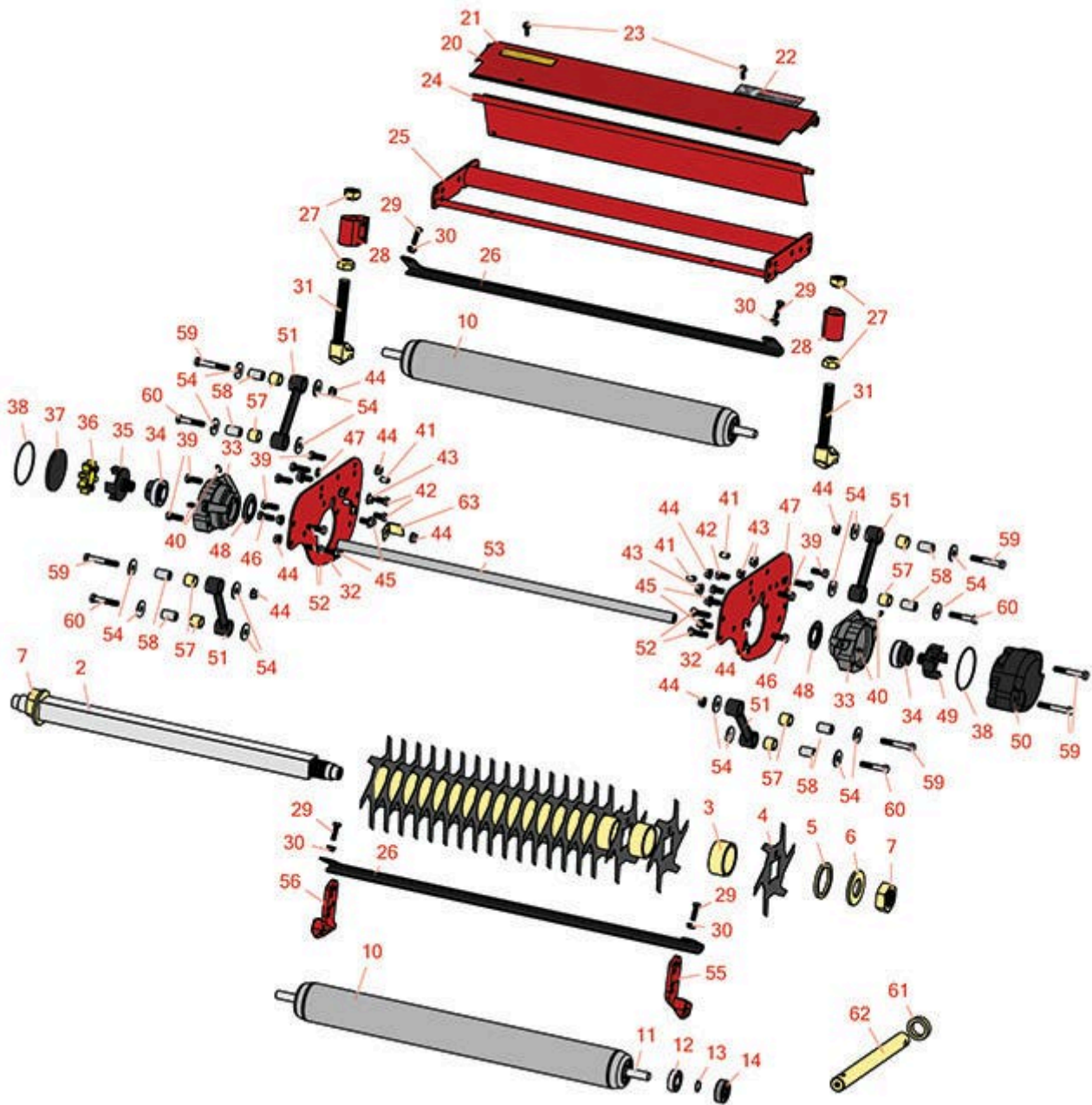




Replaces Toro Reelmaster 3100-D Parts

27in Verti-Cut Unit - Model 03217

Verti-Cut Reel & Frame



All original equipment manufacturers names and part numbers are used for identification purposes only, and we are in no way implying that our products are original equipment parts. Prices subject to change without notice.



Replaces Toro Reelmaster 3100-D Parts

27in Verti-Cut Unit - Model 03217

Verti-Cut Reel & Frame



Item No	R&R Part No.	OEM Part No.	Description	Qty Req	Price Each	Order Quantity
Verti-Cut Blades						
4	R93-3038-03	93-3038, 93-3038-03	Blade - Vertical Mower 1/16x7.25	19	4.20	
4	R106-8625	106-8625	Blade - Carbide Tip	19	18.30	
R&R Rollers						
10	R105-0191	105-0191	Roller - Smooth 3 in	2	333.80	
Other Parts Available						
2	R105-0198	105-0198	Shaft Assy - Verticut	1	227.60	
3	R105-0172	105-0172	Spacer - Verticut Shaft 1.2 in	18	11.25	
5	R105-0177	105-0177	Spacer - Verticut Shaft 1/4 in	1	5.40	
6	R105-0173	105-0173	Washer - Verticut Shaft 1/4 in	1	12.65	
7	R3220-25	3220-25	Nut - Jam 1-3/8-12	1	22.15	
11	R105-0194	105-0194	Shaft - Roller	1	99.20	
12	R251-347	251-347, 72-5690	Bearing - Ball	2	8.10	
13	R32120-15	32120-15	Ring - Snap	2	1.05	
14	R150614	99-3842	Seal	2	11.75	
20	R94-3621	94-3621	Shield - Top Incl. Safety Decal 27 in	1	51.30	
21	R93-6688	93-6688	Decal - Warning	1	2.30	
22	R67-7960	27-2890, 62-5070, 67-7960	Decal - Warning	1	2.75	

All original equipment manufacturers names and part numbers are used for identification purposes only, and we are in no way implying that our products are original equipment parts. Prices subject to change without notice.



Replaces Toro Reelmaster 3100-D Parts

27in Verti-Cut Unit - Model 03217

Verti-Cut Reel & Frame



Item No	R&R Part No.	OEM Part No.	Description	Qty Req	Price Each	Order Quantity
23	R32144-10	32140-81, 32144-10, 32144-3, 34-140-AMVD	Bolt - 1/4-20 x 3/4 Serrated Hx Wshr	2	2.85	
24	R105-0195-01	105-0195-01	Shield-Grass, Rear	1	69.65	
25	R95-8753-01	95-8753, 95-8753-01	Reel Frame - 27 in	1	244.15	
26	R105-0167-03	105-0167-03	Scraper-Full	2	45.25	
27	R95-2789	95-2789	Nut - Roller Adj Short	4	6.85	
28	R100-2262-01	100-2262-01	Bracket - HOC Rear	2	39.45	
29	R322-16	322-16, Apr-00	Bolt - Hex HD 5/16-18 x 1-1/8	4	1.65	
30	R445722	30-8980, 32128-2, 32128-20, 32128-20 , 445722	Nut - Serrated Washer	4	0.66	
31	R100-2263	100-2263	Bracket - Roller Adj	2	50.55	
32	R105-0199-01	105-0199-01	Plate-Side	2	39.40	
33	R99-3404	93-6930, 99-3404	Housing-Bearing	2	54.70	
34	R100-4926	100-4926	Bearing - Reel Self Aligning	2	21.60	
35	R93-8825	93-8825	Coupling - RH Reel	1	60.95	
36	R93-8827	93-8827	Spider - Reel Coupling	1	20.80	
37	R94-2703	94-2703	Plug - Plastic Spindle Housing	1	2.05	
38	R353-949	353-949, 60-3520	O-Ring	2	1.40	

All original equipment manufacturers names and part numbers are used for identification purposes only, and we are in no way implying that our products are original equipment parts. Prices subject to change without notice.



Replaces Toro Reelmaster 3100-D Parts

27in Verti-Cut Unit - Model 03217

Verti-Cut Reel & Frame



Item No	R&R Part No.	OEM Part No.	Description	Qty Req	Price Each	Order Quantity
39	R323-6	01-150-0010, 01-178-0608, 20-47-AD, 20-47-AGD, 3224-2, 323-6, 49-3510, 908034P, 908332	Bolt - Hex HD 3/8-16 x 1 GR5 YZ	7	0.59	
40	R302-5	21-6010, 302-11, 302-37, 302-47, 302-5, 302-57, 302-58, 302-6, 31-0300, 32-9660, 60-0800, 62-3880, 92-4181	Fitting - Grease	4	0.27	
41	R32121-36	32121-36	Pin-Spring	4	2.55	
42	R400258	01-150-0800, 01-178-0600, 01-178-0606, 20-45-AD, 31-0200, 31-9910, 3224-1, 323-4, 400258	Bolt - Hex HD 3/8-16 x 3/4	4	0.51	
43	R32128-19	104-8301, 104-9301, 32128-19	Locknut - 3/8-16 Flanged Top Lock	5	0.97	

All original equipment manufacturers names and part numbers are used for identification purposes only, and we are in no way implying that our products are original equipment parts. Prices subject to change without notice.



Replaces Toro Reelmaster 3100-D Parts

27in Verti-Cut Unit - Model 03217

Verti-Cut Reel & Frame



Item No	R&R Part No.	OEM Part No.	Description	Qty Req	Price Each	Order Quantity
44	R3296-39	32127-25, 32128-36, 3290-357, 3296-17, 3296-22, 3296-39, 915663P, 99-7443	Locknut - 3/8-16 Nylon	5	1.40	
45	R110-1718	110-1718	Screw-HHF	5	1.10	
46	R3234-11	3234-11	Bolt - Hex Washer HD	2	1.05	
47	R3254-6	01-166-0010, 01-166-0280, 01-166-0610, 3253-5, 3254-18, 3254-6, 3290-223, 48-9370	Washer - Lock 3/8	3	0.08	
48	R105-6761	105-6761	Seal	2	7.05	
49	R93-8826	93-8826	Coupling - LH Reel	1	60.95	
50	R105-0171-03	105-0171-03	Weight-End	1	71.90	
51	R16-9759	16-9759	Link Assy	4	44.50	
52	R400264	01-150-0180, 01-178-0610, 20-48-AD, 20-48-AGD, 32-9160, 3224-3, 323-29, 323-7, 400264, 908035P	Bolt - Hex HD 3/8-16 x 1-1/4	2	0.40	
53	R104-1379	104-1379	Shaft-Support	1	42.75	
54	R93-8806	93-8806	Washer-Hardened	16	1.45	

All original equipment manufacturers names and part numbers are used for identification purposes only, and we are in no way implying that our products are original equipment parts. Prices subject to change without notice.



Replaces Toro Reelmaster 3100-D Parts

27in Verti-Cut Unit - Model 03217

Verti-Cut Reel & Frame



Item No	R&R Part No.	OEM Part No.	Description	Qty Req	Price Each	Order Quantity
55	R104-3373-01	104-3373-01	Bracket - RH HOC Front Roller	1	41.45	
56	R104-3375-01	104-3375-01	Bracket - LH HOC Front Roller	1	41.45	
57	R94-8945	94-8945	Bushing - Bronze - Link Bar	2	2.55	
58	R93-6981	93-6981	Spacer	8	4.60	
59	R101526	01-150-0970, 01-178-0620, 101526, 20-53-AGD, 321-11, 3224-8, 323-11, 323-12, 323-31, 323-4, 323-47	Bolt - Hex HD 3/8-16 x 2-1/2 GR5	6	0.91	
60	R323-10	01-150-0680, 01-178-0616, 100-6663, 100-8320, 1489, 20-51-AD, 20-51-AGD, 3224-6, 323-10, 323-35, 908336	Bolt - Hex HD 3/8-16 x 2	4	0.55	
61	R63-0070	26-1580, 63-0070	Spacer - 1/2 HOC	1	2.35	
62	R104-1392	104-1392	Shaft-Pivot	1	60.70	
63	R94-2747	94-2747	Tab-Stop	1	6.55	

All original equipment manufacturers names and part numbers are used for identification purposes only, and we are in no way implying that our products are original equipment parts. Prices subject to change without notice.