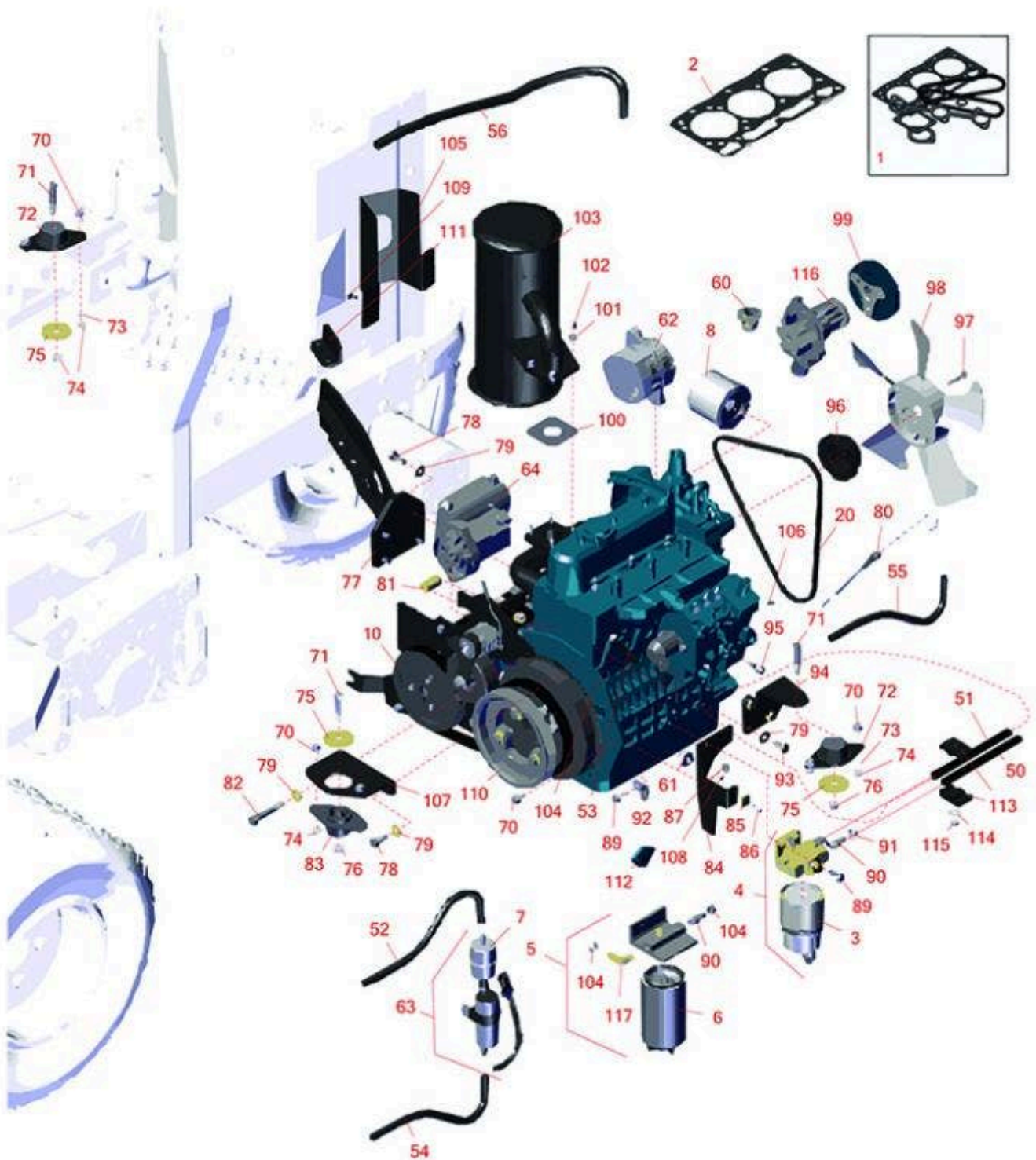




# Replaces Toro Reelmaster 3100-D Parts

Traction Unit - Model 03206  
Engine



All original equipment manufacturers names and part numbers are used for identification purposes only, and we are in no way implying that our products are original equipment parts. Prices subject to change without notice.



# Replaces Toro Reelmaster 3100-D Parts

Traction Unit - Model 03206  
Engine



| Item No        | R&R Part No.        | OEM Part No.   | Description                          | Qty Req | Price Each    | Order Quantity |
|----------------|---------------------|--|--------------------------------------|---------|---------------|----------------|
| 1              | <b>R107-7848</b>    | 107-7848   | Upper Gasket Kit                     | 1       | <b>128.25</b> |                |
| 2              | <b>R108-6573</b>    | 108-6573   | Gasket - Cylinder Head               | 1       | <b>124.25</b> |                |
| <b>Filters</b> |                     |  |                                      |         |               |                |
| 3              | <b>R98-9764</b>     | 98-9764  | Element - Water Fuel Separator       | 1       | <b>34.25</b>  |                |
| 4              | <b>R98-9305</b>     | 98-9305  | Water/Fuel Separator Assy            | 1       | <b>183.95</b> |                |
| 5              | <b>R110-9044</b>    | 110-9044   | Donaldson Water/Fuel Separator Assy  | 1       | <b>41.50</b>  |                |
| 6              | <b>R110-9049</b>    | 110-9049   | Donaldson Fuel Filter - Spin On      | 1       | <b>17.75</b>  |                |
| 6              | <b>RRF10515</b>     | 105-8045,<br>108-3854,<br>110-9049                                     | SilverGuard Fuel Filter              | 1       | <b>14.05</b>  |                |
| 6              | <b>R105-8045</b>    |  | Filter - Fuel                        | 1       | <b>4.20</b>   |                |
| 7              | <b>R112-7836</b>    | 112-7836,<br>RR ONLY   | Baldwin Fuel Filter - in Line        | 1       | <b>6.90</b>   |                |
| 7              | <b>RRF10534</b>     | 112-7836,<br>RR ONLY,<br>RRONLY  | SilverGuard Fuel Filter - Inline     | 1       | <b>5.95</b>   |                |
| 8              | <b>R42-9030</b>     | 104-5167,<br>108-3841,<br>127-0511,<br>42-9030,<br>67-4330,<br>98-9651 | Baldwin Oil Filter - Engine          | 1       | <b>7.60</b>   |                |
| 8              | <b>RX7000074034</b> | 99-8384  | Kubota Oil Filter                    | 1       | <b>11.85</b>  |                |
| 8              | <b>RRF10606</b>     | 108-3841,<br>67-4330,<br>98-9651                                       | SilverGuard Oil Filter - 2 3/4" Long | 0       | <b>6.50</b>   |                |

All original equipment manufacturers names and part numbers are used for identification purposes only, and we are in no way implying that our products are original equipment parts. Prices subject to change without notice.



# Replaces Toro Reelmaster 3100-D Parts

*Traction Unit - Model 03206  
Engine*



| Item No       | R&R Part No.        | OEM Part No.                                    | Description                          | Qty Req | Price Each     | Order Quantity |
|---------------|---------------------|---|--------------------------------------|---------|----------------|----------------|
| 8             | <b>RRF10607</b>     | 104-5167,<br>108-3841,<br>42-9030,<br>99-8384   | SilverGuard Oil Filter - 3 3/4" Long | 1       | <b>6.80</b>    |                |
| <b>Engine</b> |                     |   |                                      |         |                |                |
| 10            | <b>RX1J99500000</b> | 104-4899,<br>107-7830,<br>112-9906,<br>138-6905 | Kubota Engine D1105 E                | 1       | <b>5714.00</b> |                |
| <b>Belts</b>  |                     |   |                                      |         |                |                |
| 20            | <b>RX1624197010</b> | 130-1241,<br>99-3467                            | V-Belt - Fan - Bestorq               | 1       | <b>15.30</b>   |                |
| <b>Hoses</b>  |                     |   |                                      |         |                |                |
| 50            | <b>R110-8752</b>    | 110-8752  | Hose-Fuel                            | 1       | <b>5.65</b>    |                |
| 50            | <b>R110-4109</b>    | 104-0076,<br>110-4109,<br>56-2241               | Hose-Fuel                            | 1       | <b>6.45</b>    |                |
| 51            | <b>R104-4857</b>    | 104-4857  | Hose-Fuel                            | 1       | <b>2.95</b>    |                |
| 51            | <b>R110-4113</b>    | 110-4113,<br>63-7627                            | Hose-Fuel                            | 1       | <b>5.45</b>    |                |
| 52            | <b>R110-5701</b>    | 110-5701,<br>99-3185,<br>99-7191                | Hose-Fuel                            | 1       | <b>8.95</b>    |                |
| 53            | <b>R110-8751</b>    | 110-8751  | Hose-Fuel                            | 1       | <b>5.30</b>    |                |
| 54            | <b>R110-8802</b>    | 110-8802,<br>93-5483                            | Hose-Fuel                            | 1       | <b>18.90</b>   |                |
| 55            | <b>R106-1126</b>    | 106-1126,<br>19-3250,<br>71-3381                | Hose-Fuel                            | 1       | <b>5.90</b>    |                |
| 56            | <b>R110-6187</b>    | 110-6187  | Hose-Fuel                            | 1       | <b>8.10</b>    |                |

All original equipment manufacturers names and part numbers are used for identification purposes only, and we are in no way implying that our products are original equipment parts. Prices subject to change without notice.



# Replaces Toro Reelmaster 3100-D Parts

Traction Unit - Model 03206  
Engine



| Item No | R&R Part No. | OEM Part No. | Description | Qty Req | Price Each | Order Quantity |
|---------|--------------|--------------|-------------|---------|------------|----------------|
|---------|--------------|--------------|-------------|---------|------------|----------------|

## Gauges and Controls

|    |                     |  |                              |   |               |  |
|----|---------------------|--|------------------------------|---|---------------|--|
| 60 | <b>RX1943473014</b> | 105-2881,<br>98-7438,<br>98-7778,<br>98-9715 | Kubota Thermostat Assy       | 1 | <b>29.95</b>  |  |
| 61 | <b>RX1545139012</b> | 98-91416,<br>98-9416                         | Kubota Sensor - Oil Pressure | 1 | <b>24.87</b>  |  |
| 62 | <b>RX1624164012</b> | 98-9474                                      | Kubota Alternator - Assy 40A | 1 | <b>428.90</b> |  |
| 62 | <b>R131-6557</b>    | 131-6557                                     | Alternator Assy              | 1 | <b>343.75</b> |  |
| 63 | <b>R110-8806</b>    | 110-8806                                     | Fuel Pump and Filter Assy    | 1 | <b>165.40</b> |  |
| 64 | <b>RX3756063010</b> | 98-9705                                      | Kubota Starter               | 1 | <b>509.53</b> |  |

## Other Parts Available

|    |                 |  |                                  |   |              |  |
|----|-----------------|--|----------------------------------|---|--------------|--|
| 70 | <b>R3234-5</b>  | 3234-5,<br>62-3310   | Bolt - 5/16-18x3/4 Hx Ser Was HD | 7 | <b>0.74</b>  |  |
| 71 | <b>R323-11</b>  | 01-150-1440,<br>01-178-0618,<br>20-52-AD,<br>3224-7,<br>323-11 | Bolt - 3/8-16 x 2 1/4 GR5        | 3 | <b>0.84</b>  |  |
| 72 | <b>R83-1030</b> | 108-6879,<br>121-9076,<br>83-1030,<br>83-1031                  | Mount - Engine                   | 2 | <b>28.95</b> |  |
| 73 | <b>R3255-8</b>  | 3255-8   | Washer - Lock 5/16 Ext           | 4 | <b>0.08</b>  |  |
| 74 | <b>R445722</b>  | 30-8980,<br>32128-2,<br>32128-20,<br>32128-20,<br>445722       | Nut - Serrated Washer            | 6 | <b>0.66</b>  |  |
| 75 | <b>R80-8560</b> | 80-8560  | Washer - Hardened                | 3 | <b>9.65</b>  |  |

All original equipment manufacturers names and part numbers are used for identification purposes only, and we are in no way implying that our products are original equipment parts. Prices subject to change without notice.



# Replaces Toro Reelmaster 3100-D Parts

*Traction Unit - Model 03206  
Engine*



| Item No | R&R Part No.        | OEM Part No.   | Description                    | Qty Req | Price Each    | Order Quantity |
|---------|---------------------|--|--------------------------------|---------|---------------|----------------|
| 76      | <b>R3296-39</b>     | 32127-25,<br>32128-36,<br>3290-357,<br>3296-17,<br>3296-22,<br>3296-39,<br>915663P,<br>99-7443 | Locknut - 3/8-16 Nylon         | 3       | <b>1.40</b>   |                |
| 77      | <b>R100-4838-03</b> | 100-4838-03  | Mount-Engine                   | 1       | <b>141.75</b> |                |
| 78      | <b>R43-0090</b>     | 43-0090,<br>95-8812  | Bolt - 10mm x 1.25 x 25 Hex HD | 5       | <b>7.40</b>   |                |
| 79      | <b>R80-6990</b>     | 80-6990  | Washer - Hardened              | 10      | <b>2.75</b>   |                |
| 80      | <b>RX1G62236410</b> | 105-3720,<br>105-4579,<br>115-8530   | Kubota Gauge - Oil             | 1       | <b>25.68</b>  |                |
| 81      | <b>R95-8736</b>     | 95-8736  | Spacer                         | 1       | <b>6.25</b>   |                |
| 82      | <b>R42-9370</b>     | 42-9370  | Bolt - Hex HD 10mm x 70mm      | 1       | <b>15.90</b>  |                |
| 83      | <b>R93-5265</b>     | 107-2560,<br>125-5244,<br>93-5265  | Mount - Engine                 | 1       | <b>53.25</b>  |                |
| 84      | <b>R100-4867-03</b> | 100-4867-03  | Support - Throttle             | 1       | <b>31.10</b>  |                |
| 85      | <b>R81-1690</b>     | 81-1690  | Clamp - Cable                  | 1       | <b>1.75</b>   |                |
| 86      | <b>R32105-13</b>    | 32105-13   | Screw - Hx Was HD 10-32 x 3/4  | 1       | <b>1.05</b>   |                |
| 87      | <b>R32128-44</b>    | 32128-44   | Nut                            | 2       | <b>1.45</b>   |                |
| 89      | <b>R3234-29</b>     | 3234-17,<br>3234-29  | Bolt - 5/16-18x1 Serr Hex      | 3       | <b>1.65</b>   |                |
| 90      | <b>R353-783</b>     | 353-783  | Fitting - Straight             | 2       | <b>16.15</b>  |                |
| 91      | <b>R2412-108</b>    | 2412-108,<br>97406   | Clamp - Worm - 1/4 - Stainless | 2       | <b>2.35</b>   |                |

All original equipment manufacturers names and part numbers are used for identification purposes only, and we are in no way implying that our products are original equipment parts. Prices subject to change without notice.



# Replaces Toro Reelmaster 3100-D Parts

*Traction Unit - Model 03206  
Engine*



| Item No | R&R Part No.        | OEM Part No.  | Description                 | Qty Req | Price Each    | Order Quantity |
|---------|---------------------|---|-----------------------------|---------|---------------|----------------|
| 92      | <b>R2412-10</b>     | 2412-10,<br>Mar-06  | R-Clamp                     | 1       | <b>4.55</b>   |                |
| 93      | <b>R63-7790</b>     | 42-9300,<br>63-7790   | Bolt - Hex HD M10x1.25x20mm | 3       | <b>1.45</b>   |                |
| 94      | <b>R95-8937-03</b>  | 95-8937,<br>95-8937-03  | Mount - Engine - LH         | 1       | <b>18.55</b>  |                |
| 95      | <b>R98-9311</b>     | 98-9311   | Swivel-Throttle             | 1       | <b>15.65</b>  |                |
| 96      | <b>RX1624174250</b> | 110-0972,<br>98-9584,<br>99-3453  | Kubota Pulley - Fan         | 1       | <b>45.93</b>  |                |
| 97      | <b>RX0175450620</b> | 108-2873,<br>33113-025,<br>43-2600,<br>48-7640,<br>99-8363  | Kubota Bolt - Flange        | 4       | <b>1.85</b>   |                |
| 98      | <b>RX1628374110</b> | 104-4246,<br>99-3461  | Kubota Fan                  | 1       | <b>71.69</b>  |                |
| 99      | <b>RX1624974280</b> | 105-3745,<br>X1624974280  | Kubota Fan Drive Pulley     | 1       | <b>140.72</b> |                |
| 100     | <b>RX1526312370</b> | 98-9611,<br>99-8343   | Kubota Gasket - Muffler     | 1       | <b>7.18</b>   |                |
| 101     | <b>R3253-4</b>      | 01-166-0110,<br>01-166-0510,<br>23-10-GD,<br>24-7170,<br>30-8520,<br>3253-4,<br>42-9850,<br>48-9350,<br>48-9360,<br>48-9570,<br>68-9420,<br>99-7577 | Washer - Lock 5/16 Zinc     | 4       | <b>0.14</b>   |                |
| 102     | <b>R33014-00</b>    | 33014-00,<br>42-9580  | Nut - Jam 8mm x 1.25        | 4       | <b>0.28</b>   |                |

All original equipment manufacturers names and part numbers are used for identification purposes only, and we are in no way implying that our products are original equipment parts. Prices subject to change without notice.



# Replaces Toro Reelmaster 3100-D Parts

*Traction Unit - Model 03206  
Engine*



| Item No | R&R Part No.       | OEM Part No.                          | Description                | Qty Req | Price Each    | Order Quantity |
|---------|--------------------|---------------------------------------|----------------------------|---------|---------------|----------------|
| 103     | <b>R104-4834</b>   | 104-4834,<br>95-8942                  | Muffler                    | 1       | <b>329.65</b> |                |
| 104     | <b>R92-2379</b>    | 92-2379                               | Clamp - Hose               | 2       | <b>0.41</b>   |                |
| 105     | <b>R99-3425-03</b> | 99-3425,<br>99-3425-03                | Guard - Exhaust            | 1       | <b>40.80</b>  |                |
| 106     | <b>R112-9919</b>   | 112-9919                              | Stop - Throttle Cable      | 1       | <b>2.75</b>   |                |
| 107     | <b>R95-8926-03</b> | 95-8926,<br>95-8926-03,<br>99-3618-03 | Mount - Engine - Front     | 1       | <b>20.20</b>  |                |
| 108     | <b>R3296-2</b>     | 32127-10,<br>3296-2,<br>9157404       | Nut - #10 Lock             | 1       | <b>0.94</b>   |                |
| 109     | <b>R300403</b>     | 32144-4,<br>32144-63,<br>49-2040      | Bolt - Hex HD 1/4-20 x 1/2 | 4       | <b>0.35</b>   |                |
| 110     | <b>R99-3412-03</b> | 99-3412,<br>99-3412-03                | Pulley                     | 1       | <b>137.25</b> |                |
| 111     | <b>R95-8943-03</b> | 95-8943-03                            | Bracket-Muffler            | 1       | <b>22.45</b>  |                |
| 112     | <b>R99-3514</b>    | 99-3514                               | Cover                      | 1       | <b>8.05</b>   |                |
| 113     | <b>R56-7971</b>    | 56-7971                               | Clamp - Tube               | 2       | <b>16.05</b>  |                |

All original equipment manufacturers names and part numbers are used for identification purposes only, and we are in no way implying that our products are original equipment parts. Prices subject to change without notice.



# Replaces Toro Reelmaster 3100-D Parts

Traction Unit - Model 03206  
Engine



| Item No | R&R Part No.     | OEM Part No.   | Description                  | Qty Req | Price Each    | Order Quantity |
|---------|------------------|--|------------------------------|---------|---------------|----------------|
| 114     | <b>R453011</b>   | 01-166-0100,<br>01-166-0120,<br>01-166-0270,<br>01-166-0500,<br>01-166-0600,<br>01-166-0620,<br>132-4593,<br>2356-3,<br>237-12,<br>24-10-AD,<br>24-11-AD,<br>24-11-BD,<br>24-12-AD,<br>24-12-BD,<br>30-9310,<br>32-8190,<br>3256-24,<br>3256-3,<br>3256-36,<br>3256-4,<br>453011,<br>47-9950,<br>48-9220,<br>513458,<br>7-0052 | Washer - Flat 3/8 SAE Y/Zinc | 1       | <b>0.11</b>   |                |
| 115     | <b>R3296-29</b>  | 1-804256,<br>3290-357,<br>3296-29,<br>915662P  | Locknut - 5/16-18 ESNA       | 1       | <b>2.95</b>   |                |
| 116     | <b>R107-9089</b> | 104-4885,<br>107-9089,<br>108-4426   | Water Pump Assy              | 1       | <b>334.80</b> |                |
| 117     | <b>R353-781</b>  | 353-781  | Fitting-Elbow                | 1       | <b>17.35</b>  |                |

All original equipment manufacturers names and part numbers are used for identification purposes only, and we are in no way implying that our products are original equipment parts. Prices subject to change without notice.