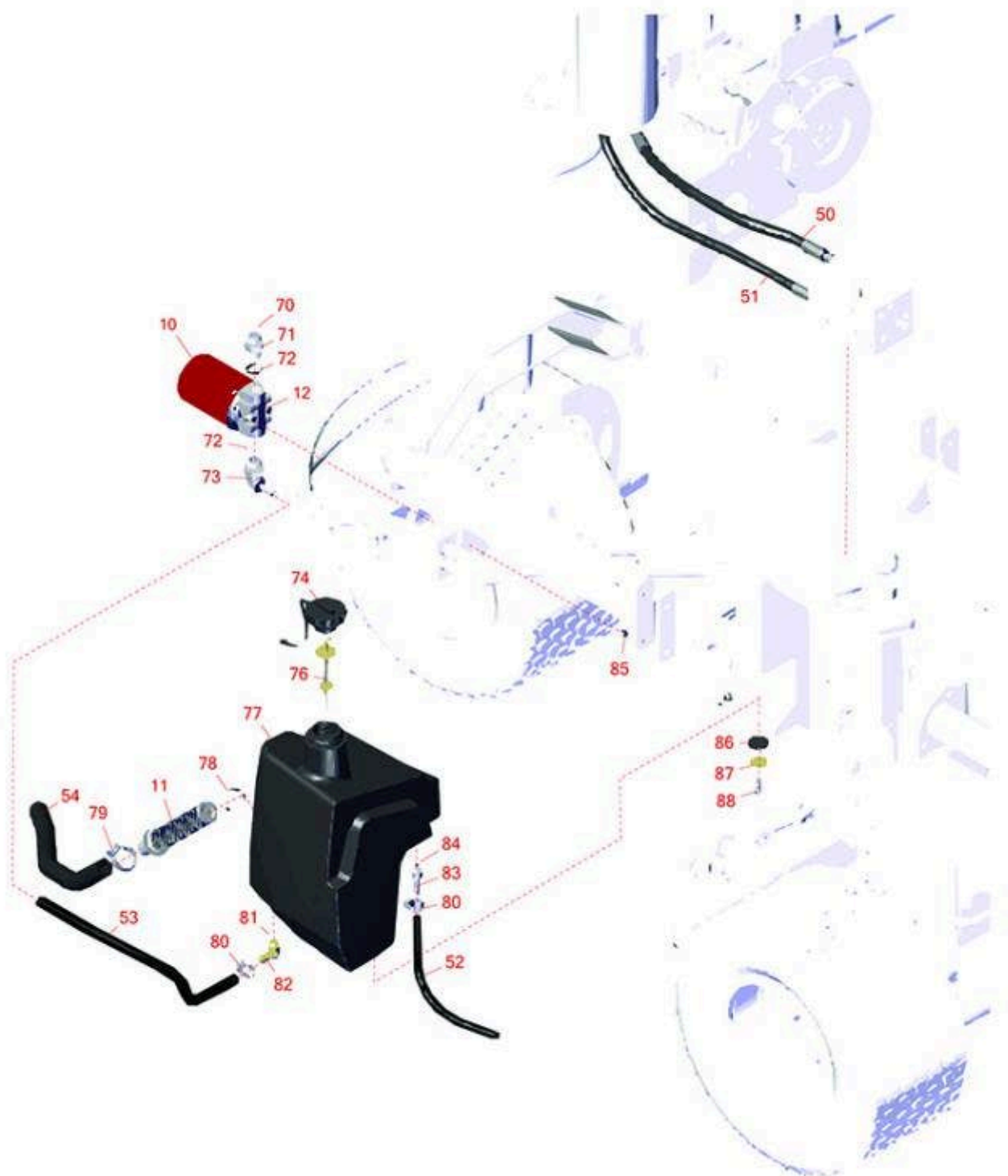




# Replaces Toro Reelmaster 3100-D Parts

Traction Unit - Model 03206

Hydraulic Tank



All original equipment manufacturers names and part numbers are used for identification purposes only, and we are in no way implying that our products are original equipment parts. Prices subject to change without notice.



# Replaces Toro Reelmaster 3100-D Parts

Traction Unit - Model 03206

Hydraulic Tank



Item No	R&R Part No.	OEM Part No.	Description	Qty Req	Price Each	Order Quantity
---------	--------------	--------------	-------------	---------	------------	----------------

## Filters

10	<b>R86-3010</b>	23-9740, 239470, 28-1370, 281370, 353-387, 353387, 54-0110, 540110, 76-6490, 86-3010, 863010, Dec-70	Baldwin Hydraulic Oil Filter	1	<b>10.20</b>	
10	<b>RRF10611</b>	01-317-0240, 23-9740, 54-0110	SilverGuard Hydraulic Oil Filter	1	<b>8.75</b>	
10	<b>RRF10610</b>	23-9740, 239470, 28-1370, 281370, 353-387, 353387, 54-0110, 540110, 76-6490, 86-3010, 863010	SilverGuard Oil Filter	1	<b>8.25</b>	
11	<b>R104-7546</b>	104-7546, 104-7546`	Strainer - Tank	1	<b>101.40</b>	
12	<b>R150924</b>		Filter Head Assy	1	<b>30.15</b>	
12	<b>R92-5821</b>	86-3000, 92-5821	Filter - Head	1	<b>66.65</b>	

## Hoses

50	<b>R95-8829</b>	95-8829	Hydraulic Hose Assy	1	<b>48.60</b>	
51	<b>R106-4197</b>	106-4197	Hydraulic Hose Assy	1	<b>57.90</b>	

All original equipment manufacturers names and part numbers are used for identification purposes only, and we are in no way implying that our products are original equipment parts. Prices subject to change without notice.



# Replaces Toro Reelmaster 3100-D Parts

*Traction Unit - Model 03206*

*Hydraulic Tank*



Item No	R&R Part No.	OEM Part No.	Description	Qty Req	Price Each	Order Quantity
52	<b>R104-4846</b>	104-4846	Hose	1	<b>6.55</b>	
53	<b>R99-3501</b>	99-3501	Hose	1	<b>22.40</b>	
54	<b>R104-4845</b>	104-4845	Hose - Suction	1	<b>92.90</b>	

## **Other Parts Available**

70	<b>R237-65</b>	237-65, 237.65	O-Ring	1	<b>0.65</b>	
71	<b>R340-8</b>	340-8	Adapter	1	<b>10.60</b>	
72	<b>R237-81</b>	237-81, 237.81, 327-81	O-Ring	2	<b>2.30</b>	
73	<b>R95-8814</b>	95-8814	Fitting - Barbed 90 Deg	1	<b>112.15</b>	
74	<b>R93-7160</b>	93-3103, 93-7160	Cap - Hyd Oil w/Tether	1	<b>23.45</b>	
76	<b>R75-3710</b>	75-3710	Dipstick - Hyd Oil	1	<b>35.10</b>	
77	<b>R104-4840</b>	104-4840	Tank - Hyd	1	<b>877.50</b>	
78	<b>R340-136</b>	340-136	O-Ring	1	<b>4.35</b>	
79	<b>R2412-34</b>	2412-34, 31-0120	Clamp - Hose .75-1.5	1	<b>1.50</b>	
80	<b>R2412-36</b>	2210-87, 2412-36, 31-9140, 93-5818, 99-0772	Clamp - Hose 1/2	3	<b>2.75</b>	
81	<b>R237-79</b>	237-79	O-Ring	1	<b>1.50</b>	
82	<b>R354-126</b>	354-126	Hydraulic Fitting - 45 Deg	1	<b>26.80</b>	
83	<b>R353-979</b>	353-979	Fitting - Straight	1	<b>11.55</b>	

All original equipment manufacturers names and part numbers are used for identification purposes only, and we are in no way implying that our products are original equipment parts. Prices subject to change without notice.



# Replaces Toro Reelmaster 3100-D Parts

*Traction Unit - Model 03206*

*Hydraulic Tank*



Item No	R&R Part No.	OEM Part No.	Description	Qty Req	Price Each	Order Quantity
84	<b>R237-42</b>	237-42, 31-4160	O-Ring	1	<b>0.80</b>	
85	<b>R3234-13</b>	3234-13, 960151P	Bolt - Flanged Hex 1/4-20	2	<b>0.77</b>	
86	<b>R240-11</b>	240-11	Bushing - Rubber - Flanged	4	<b>2.45</b>	
87	<b>R63-8410</b>	53-6380, 63-4810, 63-8410	Washer - Isolator Bushing	4	<b>0.77</b>	
88	<b>R3234-11</b>	3234-11	Bolt - Hex Washer HD	4	<b>1.05</b>	

All original equipment manufacturers names and part numbers are used for identification purposes only, and we are in no way implying that our products are original equipment parts. Prices subject to change without notice.