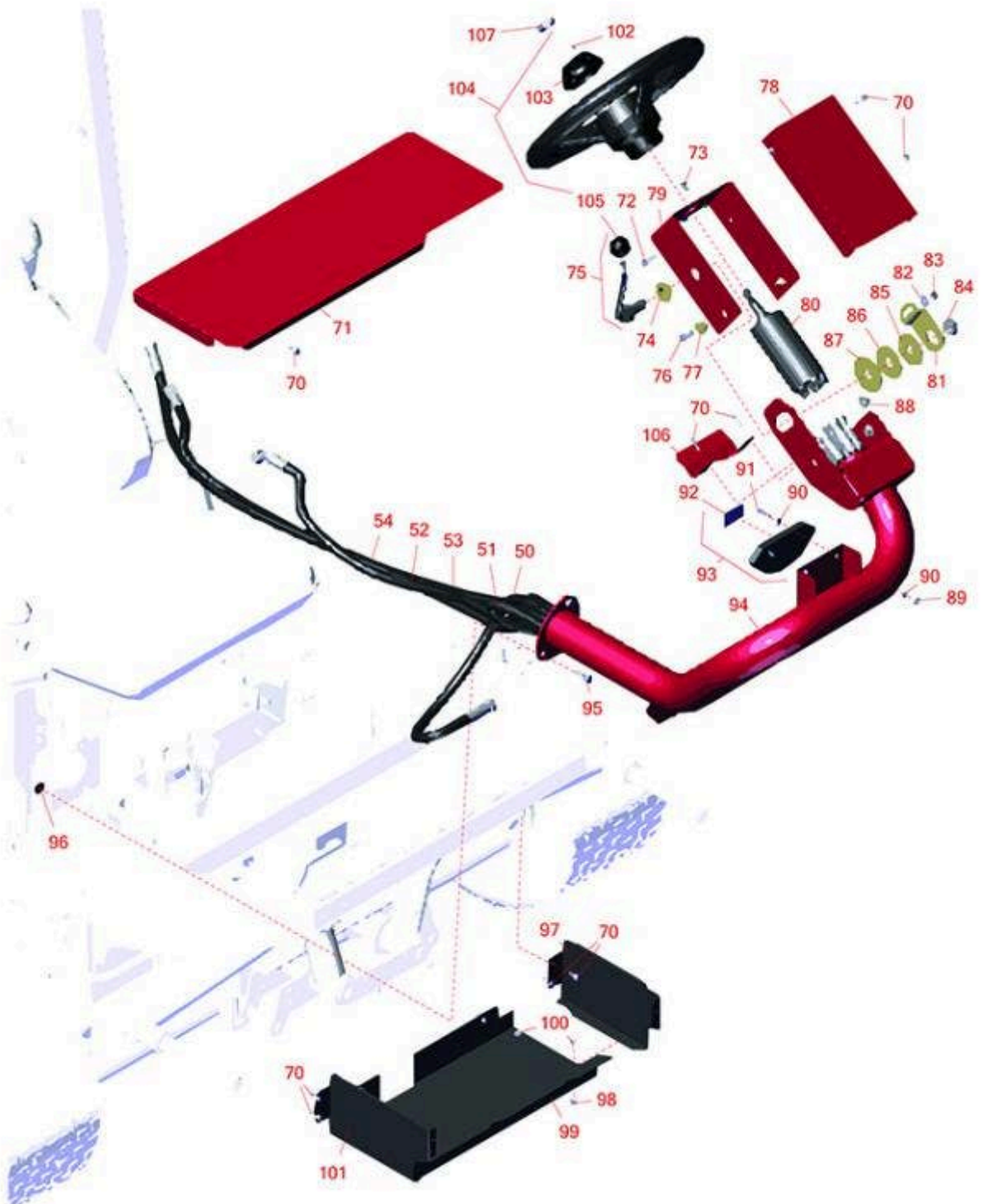




# Replaces Toro Reelmaster 3100-D Parts

Traction Unit - Model 03201

Steering Column



All original equipment manufacturers names and part numbers are used for identification purposes only, and we are in no way implying that our products are original equipment parts. Prices subject to change without notice.



# Replaces Toro Reelmaster 3100-D Parts

Traction Unit - Model 03201

Steering Column



Item No	R&R Part No.	OEM Part No.	Description	Qty Req	Price Each	Order Quantity
<b>Hoses</b>						
50	<b>R95-8843</b>	95-8843	Hydraulic Hose Assy	1	<b>64.55</b>	
51	<b>R95-8842</b>	95-8842	Hydraulic Hose Assy	1	<b>55.10</b>	
52	<b>R95-8846</b>	95-8846	Hydraulic Hose Assy	1	<b>71.45</b>	
53	<b>R95-8844</b>	95-8844	Hydraulic Hose Assy	1	<b>60.45</b>	
54	<b>R95-8845</b>	95-8845	Hydraulic Hose Assy	1	<b>63.50</b>	
<b>Other Parts Availalbe</b>						
70	<b>R32144-10</b>	32140-81, 32144-10, 32144-3, 34-140-AMVD	Bolt - 1/4-20 x 3/4 Serrated Hx Wshr	12	<b>2.85</b>	
71	<b>R99-3504</b>	99-3504	Toolbox Cover Assy	1	<b>107.60</b>	
72	<b>R322-5</b>	01-178-0508, 20-26-AD, 20-26-AGD, 30-9000, 322-5, 513341, 519755, 908019P, N/A	Bolt - Hex HD 5/16-18 x 1	1	<b>0.40</b>	
73	<b>R33103-012</b>	33103-012	Bolt - Flanged Hx HD	4	<b>3.20</b>	
74	<b>R99-3502</b>	99-3502	Boss	1	<b>8.75</b>	
75	<b>R95-8798-03</b>	95-8798, 95-8798-03	Lever - Steering	1	<b>56.05</b>	

All original equipment manufacturers names and part numbers are used for identification purposes only, and we are in no way implying that our products are original equipment parts. Prices subject to change without notice.



# Replaces Toro Reelmaster 3100-D Parts

*Traction Unit - Model 03201*

*Steering Column*



Item No	R&R Part No.	OEM Part No.	Description	Qty Req	Price Each	Order Quantity
76	<b>R400260</b>	01-178-0605, 18-4100, 19-8270, 323-3, 323-33, 323-34, 323-5, 3235-5	Bolt - Hex HD 3/8-16 x 7/8	2	<b>0.75</b>	
77	<b>R93-5988</b>	93-5204, 93-5988	Hub - Pivot	2	<b>17.30</b>	
78	<b>R95-8794-01</b>	95-8794, 95-8794-01	Cover - Valve - Steering	1	<b>47.95</b>	
79	<b>R104-5185-01</b>	104-5185-01	Bracket - Steering Valve	1	<b>28.95</b>	
80	<b>R104-5180</b>	104-5180	Valve - Steering	1	<b>689.95</b>	
81	<b>R80-2880</b>	80-2880	Bracket - Tilt	1	<b>12.05</b>	
82	<b>R453009</b>	01-166-0400, 24-10-BD, 24-9-AD, 32-9650, 3256-2, 3256-23, 3256-3, 3256-67, 3290-217, 3556-3, 4-2390, 7-0152	Washer - Flat 5/16 SAE	1	<b>0.13</b>	
83	<b>R32128-44</b>	32128-44	Nut	1	<b>1.45</b>	
84	<b>R3218-7</b>	01-158-0560, 01-191-1210, 3218-7	Nut - Jam	1	<b>3.85</b>	
85	<b>R80-2930</b>	80-2930	Washer - Flat	1	<b>4.70</b>	
86	<b>R82-9010</b>	82-9010	Disc - Friction	1	<b>9.30</b>	
87	<b>R31-0390</b>	31-0390	Disc - Friction	1	<b>25.45</b>	

All original equipment manufacturers names and part numbers are used for identification purposes only, and we are in no way implying that our products are original equipment parts. Prices subject to change without notice.



# Replaces Toro Reelmaster 3100-D Parts

*Traction Unit - Model 03201*

*Steering Column*



Item No	R&R Part No.	OEM Part No.	Description	Qty Req	Price Each	Order Quantity
88	<b>R32128-21</b>	32128-21	Locknut - Flanged 3/8-16 Whiz Top Lock	2	<b>0.55</b>	
89	<b>R301504</b>	2296-42, 301504, 32127-24, 32128-33, 32146-17, 3296-16, 3296-42, 3296-42 , 915661P	Locknut - ESNA 1/4-20	2	<b>0.18</b>	
90	<b>R3256-22</b>	24-9-BD, 3-1032, 3256-1, 3256-22, 93-0954, 93-0989	Washer - Flat 1/4 Yellow	4	<b>0.12</b>	
91	<b>R321-7</b>	321-26, 321-7	Bolt - Hex HD	2	<b>2.75</b>	
92	<b>R100-4837</b>	100-4837	Decal - Danger	1	<b>3.25</b>	
93	<b>R100-4929</b>	100-4929	Slope Indicator Assy	1	<b>65.60</b>	
94	<b>R105-8536-01</b>	100-4896-01, 105-8536-01, 95-8785, 95-8785-01	Arm - Steering	1	<b>288.75</b>	
95	<b>R3234-11</b>	3234-11	Bolt - Hex Washer HD	4	<b>1.05</b>	
96	<b>R32128-43</b>	30-8990, 32128-43, 3290-357	Nut - Flanged Whiz - 3/8-16	4	<b>0.62</b>	
97	<b>R99-3432-03</b>	99-3432, 99-3432-03	End - Toolbox - LH	1	<b>34.50</b>	
98	<b>R32128-33</b>	32128-33	Nut - 1/4-20 Flanged Serr	4	<b>0.70</b>	
99	<b>R99-3430-03</b>	99-3430, 99-3430-03	Bottom - Toolbox	1	<b>49.35</b>	

All original equipment manufacturers names and part numbers are used for identification purposes only, and we are in no way implying that our products are original equipment parts. Prices subject to change without notice.



# Replaces Toro Reelmaster 3100-D Parts

*Traction Unit - Model 03201*

*Steering Column*



Item No	R&R Part No.	OEM Part No.	Description	Qty Req	Price Each	Order Quantity
100	<b>R3234-13</b>	3234-13, 960151P	Bolt - Flanged Hex 1/4-20	4	<b>0.77</b>	
101	<b>R99-3431-03</b>	99-3431, 99-3431-03	End - Toolbox - RH	1	<b>34.50</b>	
102	<b>R32144-21</b>	32144-21	Screw #6 x 1 Pan HD Ph Sheet Metal	1	<b>0.84</b>	
103	<b>R68-5140</b>	68-5140	Cap - 13 in Steering Wheel	1	<b>8.65</b>	
104	<b>R75-0560</b>	75-0560, 87-3820	Steering Wheel Assy - 13 in	1	<b>147.55</b>	
104	<b>R150263</b>	68-5130	Wheel - Steering 14 in	1	<b>131.10</b>	
105	<b>R233-48</b>	233-24, 233-48, 30-3370	Knob	1	<b>6.50</b>	
106	<b>R99-3405-01</b>	99-3405, 99-3405-01	Shield - Steering	1	<b>27.65</b>	
107	<b>R107-2561</b>	107-2561, 47-6990, 47-7090	Nut - Steering Column	1	<b>18.95</b>	

All original equipment manufacturers names and part numbers are used for identification purposes only, and we are in no way implying that our products are original equipment parts. Prices subject to change without notice.