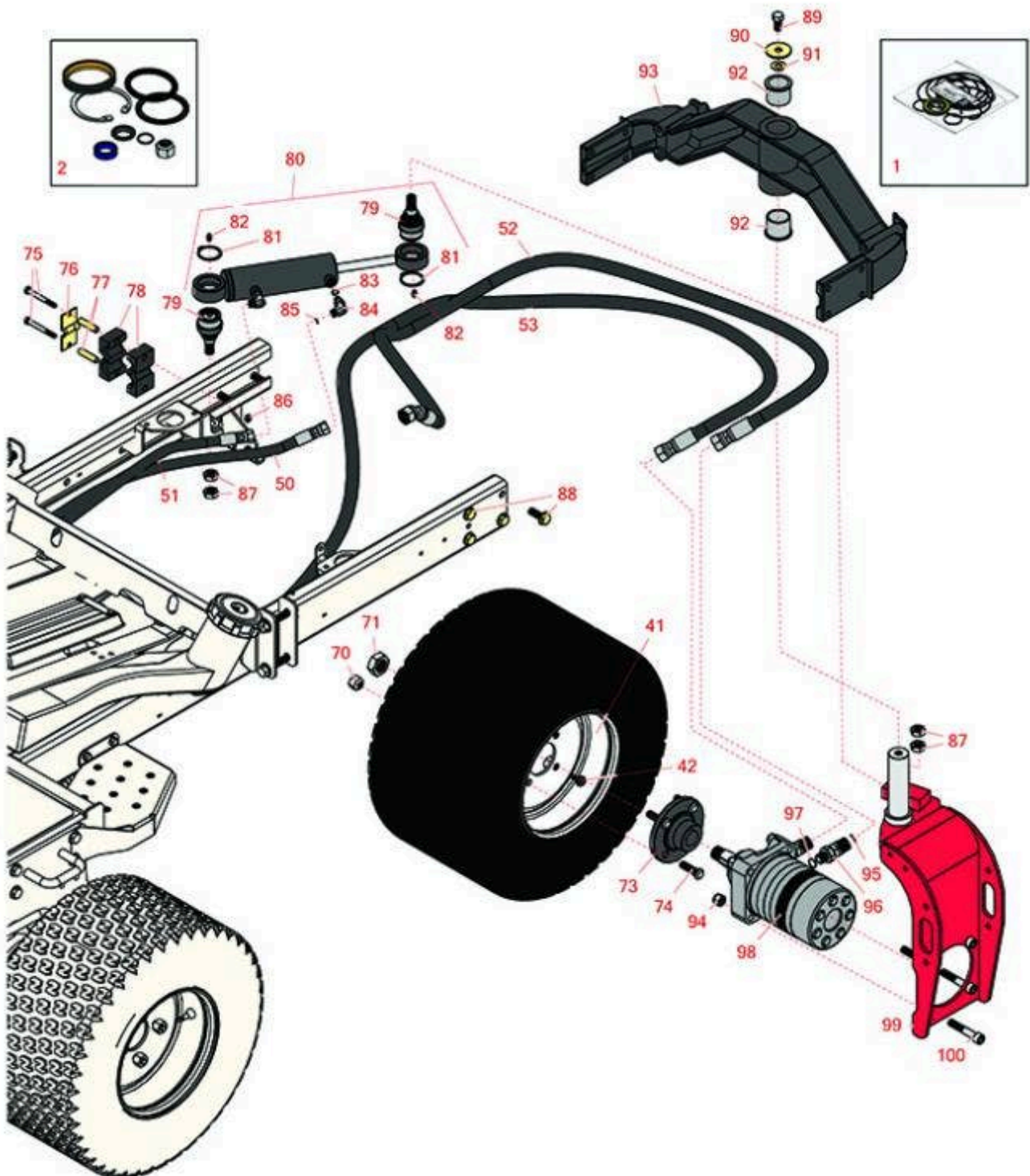




# Replaces Toro Reelmaster 3100-D Parts

Traction Unit - Model 03200

Rear Wheel



All original equipment manufacturers names and part numbers are used for identification purposes only, and we are in no way implying that our products are original equipment parts. Prices subject to change without notice.



# Replaces Toro Reelmaster 3100-D Parts

Traction Unit - Model 03200

Rear Wheel



Item No	R&R Part No.	OEM Part No.	Description	Qty Req	Price Each	Order Quantity
<b>Overhaul Kits</b>						
1	<b>R76-0800</b>	100-6131, 76-0800, 94-8178	Seal Kit - Hyd Wheel Motor	1	<b>55.45</b>	
2	<b>R86-5390</b>	72-9680, 74-3590, 83-7240, 86-5390	Seal Kit - Hyd Cyl	1	<b>66.90</b>	
41	<b>R117-5129</b>	117-5129	Wheel - 10 x 7	2	<b>37.55</b>	
42	<b>R232-27</b>	232-27, 232-31	Stem - Valve w/ Cap	2	<b>4.15</b>	
<b>Hoses</b>						
50	<b>R95-8845</b>	95-8845	Hydraulic Hose Assy	1	<b>63.50</b>	
51	<b>R95-8844</b>	95-8844	Hydraulic Hose Assy	1	<b>60.45</b>	
52	<b>R105-1222</b>	105-1222	Hydraulic Hose Assy	1	<b>197.30</b>	
53	<b>R105-1221</b>	105-1221	Hydraulic Hose Assy	1	<b>320.50</b>	
<b>Other Parts Available</b>						
70	<b>R242-50</b>	242-50	Nut - 1/2-20 Wheel	8	<b>1.50</b>	
71	<b>R26-3790</b>	26-3790	Nut - Hex - Wheel Motor 1-20	8	<b>14.75</b>	
73	<b>R10-6870-03</b>	10-6870, 10-6870-03, Oct-70	Hub - Wheel	2	<b>132.30</b>	
74	<b>R10-6830</b>	10-6830, 75-9440	Stud - Wheel 1/2-20 x 1 3/4	8	<b>8.50</b>	
75	<b>R322-13</b>	01-150-1680, 01-178-0522, 322-13, 3223-9	Screw - Hxx HD	2	<b>2.45</b>	

All original equipment manufacturers names and part numbers are used for identification purposes only, and we are in no way implying that our products are original equipment parts. Prices subject to change without notice.



# Replaces Toro Reelmaster 3100-D Parts

*Traction Unit - Model 03200*

*Rear Wheel*



Item No	R&R Part No.	OEM Part No.	Description	Qty Req	Price Each	Order Quantity
76	<b>R93-7961</b>	93-7961	Clamp - Case Drain	1	<b>6.55</b>	
77	<b>R93-7960</b>	93-7960	Spacer	2	<b>6.05</b>	
78	<b>R82-8170</b>	82-8170	Clamp	2	<b>8.90</b>	
79	<b>R106-6774</b>	106-6774, 92-5838, 92-5838-01	Ball Joint	2	<b>48.65</b>	
80	<b>R94-8141</b>	94-8141	Hydraulic Cylinder	1	<b>442.65</b>	
81	<b>R32151-104</b>	32151-104	Ring - Retaining, Ex	2	<b>4.35</b>	
82	<b>R302-5</b>	21-6010, 302-11, 302-37, 302-47, 302-5, 302-57, 302-58, 302-6, 31-0300, 32-9660, 60-0800, 62-3880, 92-4181	Fitting - Grease	3	<b>0.27</b>	
83	<b>R237-22</b>	107-8844, 237-22, 237-78	O-Ring	2	<b>0.62</b>	
84	<b>R340-132</b>	340-132	Hydraulic Fitting - 90 Deg	2	<b>14.40</b>	
85	<b>R237-21</b>	237-21, 327-21	O-Ring	2	<b>0.47</b>	
86	<b>R3296-29</b>	1-804256, 3290-357, 3296-29, 915662P	Locknut - 5/16-18 ESNA	4	<b>2.95</b>	

All original equipment manufacturers names and part numbers are used for identification purposes only, and we are in no way implying that our products are original equipment parts. Prices subject to change without notice.



# Replaces Toro Reelmaster 3100-D Parts

*Traction Unit - Model 03200*

*Rear Wheel*



Item No	R&R Part No.	OEM Part No.	Description	Qty Req	Price Each	Order Quantity
87	<b>R443828</b>	01-191-1018, 3214, 3220-6, 443828, 915089P	Nut - 5/8-18 Hex	4	<b>0.62</b>	
88	<b>R3234-38</b>	3234-38	Bolt - Flanged Hex 1/2-13 x 1-1/4	8	<b>3.55</b>	
89	<b>R325-3</b>	325-3	Screw Hex HD	1	<b>2.55</b>	
90	<b>R75-7730</b>	75-7730	Washer - Thrust	1	<b>4.15</b>	
91	<b>R3255-2</b>	3255-2	Washer - Lock - Ext	1	<b>0.79</b>	
92	<b>R95-8805</b>	95-8805	Bushing - Flanged 1 1/2 in ID	2	<b>27.45</b>	
93	<b>R107-7828</b>	107-7828, 107-7828-03, 18-3979-03	Rear Frame Casting Assy	1	<b>701.50</b>	
94	<b>RF5003</b>	32127-29, 32131-5, 32132-5, 3296-23	Locknut - ESNA 1/2-13	4	<b>0.78</b>	
95	<b>R237-65</b>	237-65, 237.65	O-Ring	2	<b>0.65</b>	
96	<b>R340-14</b>	340-14, 96-0861	Hydraulic Fitting - 45 Deg	2	<b>21.90</b>	
97	<b>R237-80</b>	237-80, 327-80	O-Ring	2	<b>1.85</b>	
98	<b>R95-8694</b>	95-8694	Hydraulic Motor Assy - Rear	1	<b>1127.60</b>	
99	<b>R95-8905-01</b>	95-8905, 95-8905-01	Fork-Rear	1	<b>533.75</b>	
100	<b>R3274-93</b>	3274-74, 3274-93	Bolt - Soc HD Cap	4	<b>6.25</b>	

All original equipment manufacturers names and part numbers are used for identification purposes only, and we are in no way implying that our products are original equipment parts. Prices subject to change without notice.