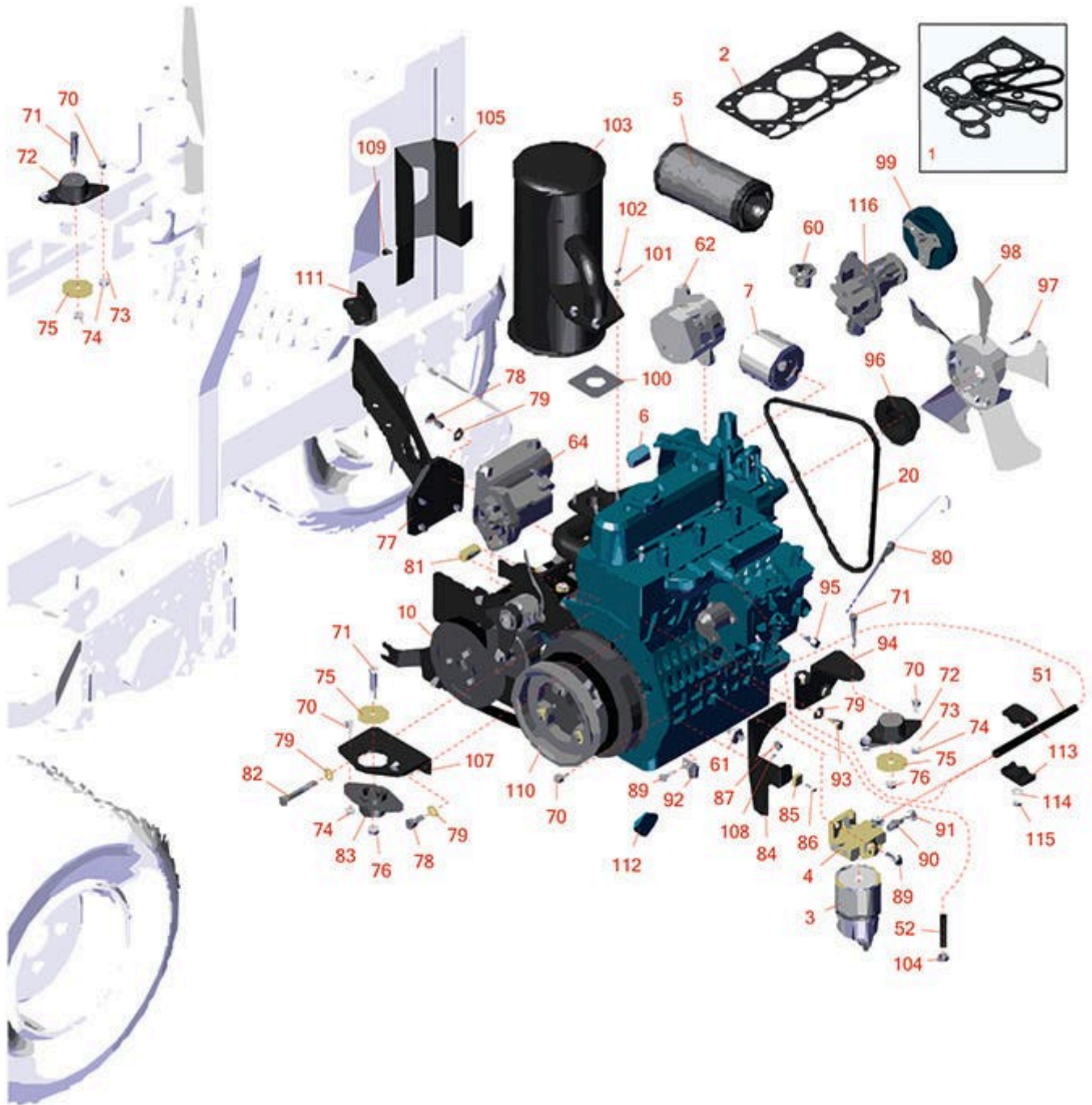




# Replaces Toro Reelmaster 3100-D Parts

Traction Unit - Model 03200  
Engine



All original equipment manufacturers names and part numbers are used for identification purposes only, and we are in no way implying that our products are original equipment parts. Prices subject to change without notice.



# Replaces Toro Reelmaster 3100-D Parts

Traction Unit - Model 03200  
Engine



Item No	R&R Part No.	OEM Part No.	Description	Qty Req	Price Each	Order Quantity
1	<b>R107-7848</b>	107-7848	Upper Gasket Kit	1	<b>128.25</b>	
2	<b>R108-6573</b>	108-6573	Gasket - Cylinder Head	1	<b>124.25</b>	
<b>Filters</b>						
3	<b>R98-9764</b>	98-9764	Element - Water Fuel Separator	1	<b>34.25</b>	
4	<b>R98-9305</b>	98-9305	Water/Fuel Separator Assy	1	<b>183.95</b>	
5	<b>R93-2195</b>	93-2195	Baldwin Air Filter	1	<b>21.15</b>	
5	<b>R33-1300</b>	108-3808, 33-1300, 33-1300-09	Baldwin Filter - Air Element	1	<b>23.70</b>	
5	<b>RRF10125</b>	108-3808, 93-2195	SilverGuard Air Filter	1	<b>16.30</b>	
6	<b>RX1624105670</b>	98-9493, 99-9430	Kubota Element - Breather	1	<b>2.97</b>	
7	<b>RX7000074034</b>	99-8384	Kubota Oil Filter	1	<b>11.85</b>	
7	<b>RRF10625</b>	99-8384	SilverGuard Oil Filter	1	<b>7.40</b>	
7	<b>R42-9030</b>	104-5167, 108-3841, 127-0511, 42-9030, 67-4330, 98-9651	Baldwin Oil Filter - Engine	1	<b>7.60</b>	
7	<b>RRF10606</b>	108-3841, 67-4330, 98-9651	SilverGuard Oil Filter - 2 3/4" Long	1	<b>6.50</b>	
7	<b>RRF10607</b>	104-5167, 108-3841, 42-9030, 99-8384	SilverGuard Oil Filter - 3 3/4" Long	1	<b>6.80</b>	

## Engine

All original equipment manufacturers names and part numbers are used for identification purposes only, and we are in no way implying that our products are original equipment parts. Prices subject to change without notice.



# Replaces Toro Reelmaster 3100-D Parts

Traction Unit - Model 03200  
Engine



Item No	R&R Part No.	OEM Part No.	Description	Qty Req	Price Each	Order Quantity
10	<b>RX1J99500000</b>	104-4899, 107-7830, 112-9906, 138-6905	Kubota Engine D1105 E	1	<b>5714.00</b>	
<b>Belts</b>						
20	<b>RX1624197010</b>	130-1241, 99-3467	V-Belt - Fan - Bestorq	1	<b>15.30</b>	
<b>Hoses</b>						
51	<b>R104-4857</b>	104-4857	Hose-Fuel	1	<b>2.95</b>	
52	<b>R106-1126</b>	106-1126, 19-3250, 71-3381	Hose-Fuel	1	<b>5.90</b>	
<b>Gauges and Controls</b>						
60	<b>RX1943473014</b>	105-2881, 98-7438, 98-7778, 98-9715	Kubota Thermostat Assy	1	<b>29.95</b>	
61	<b>RX1545139012</b>	98-91416, 98-9416	Kubota Sensor - Oil Pressure	1	<b>24.87</b>	
62	<b>RX1624164012</b>	98-9474	Kubota Alternator - Assy 40A	1	<b>428.90</b>	
62	<b>R131-6557</b>	131-6557	Alternator Assy	1	<b>343.75</b>	
64	<b>RX3756063010</b>	98-9705	Kubota Starter	1	<b>509.53</b>	
<b>Other Parts Available</b>						
70	<b>R3234-5</b>	3234-5, 62-3310	Bolt - 5/16-18x3/4 Hx Ser Was HD	7	<b>0.74</b>	
71	<b>R323-11</b>	01-150-1440, 01-178-0618, 20-52-AD, 3224-7, 323-11	Bolt - 3/8-16 x 2 1/4 GR5	3	<b>0.84</b>	

All original equipment manufacturers names and part numbers are used for identification purposes only, and we are in no way implying that our products are original equipment parts. Prices subject to change without notice.



# Replaces Toro Reelmaster 3100-D Parts

*Traction Unit - Model 03200  
Engine*



Item No	R&R Part No.	OEM Part No.	Description	Qty Req	Price Each	Order Quantity
72	<b>R83-1030</b>	108-6879, 121-9076, 83-1030, 83-1031	Mount - Engine	2	<b>28.95</b>	
73	<b>R3255-8</b>	3255-8	Washer - Lock 5/16 Ext	4	<b>0.08</b>	
74	<b>R445722</b>	30-8980, 32128-2, 32128-20, 32128-20, 445722	Nut - Serrated Washer	6	<b>0.66</b>	
75	<b>R80-8560</b>	80-8560	Washer - Hardened	3	<b>9.65</b>	
76	<b>R3296-39</b>	32127-25, 32128-36, 3290-357, 3296-17, 3296-22, 3296-39, 915663P, 99-7443	Locknut - 3/8-16 Nylon	3	<b>1.40</b>	
77	<b>R100-4838-03</b>	100-4838-03	Mount-Engine	1	<b>141.75</b>	
78	<b>R43-0090</b>	43-0090, 95-8812	Bolt - 10mm x 1.25 x 25 Hex HD	5	<b>7.40</b>	
79	<b>R80-6990</b>	80-6990	Washer - Hardened	10	<b>2.75</b>	
80	<b>RX1G62236410</b>	105-3720, 105-4579, 115-8530	Kubota Gauge - Oil	1	<b>25.68</b>	
81	<b>R95-8736</b>	95-8736	Spacer	1	<b>6.25</b>	
82	<b>R42-9370</b>	42-9370	Bolt - Hex HD 10mm x 70mm	1	<b>15.90</b>	
83	<b>R93-5265</b>	107-2560, 125-5244, 93-5265	Mount - Engine	1	<b>53.25</b>	
84	<b>R100-4867-03</b>	100-4867-03	Support - Throttle	1	<b>31.10</b>	

All original equipment manufacturers names and part numbers are used for identification purposes only, and we are in no way implying that our products are original equipment parts. Prices subject to change without notice.



# Replaces Toro Reelmaster 3100-D Parts

Traction Unit - Model 03200  
Engine



Item No	R&R Part No.	OEM Part No.	Description	Qty Req	Price Each	Order Quantity
85	<b>R81-1690</b>	81-1690	Clamp - Cable	1	<b>1.75</b>	
86	<b>R32105-13</b>	32105-13	Screw - Hx Was HD 10-32 x 3/4	1	<b>1.05</b>	
87	<b>R32128-44</b>	32128-44	Nut	2	<b>1.45</b>	
89	<b>R3234-29</b>	3234-17, 3234-29	Bolt - 5/16-18x1 Serr Hex	3	<b>1.65</b>	
90	<b>R353-783</b>	353-783	Fitting - Straight	2	<b>16.15</b>	
91	<b>R2412-108</b>	2412-108, 97406	Clamp - Worm - 1/4 - Stainless	2	<b>2.35</b>	
92	<b>R2412-10</b>	2412-10, Mar-06	R-Clamp	1	<b>4.55</b>	
93	<b>R63-7790</b>	42-9300, 63-7790	Bolt - Hex HD M10x1.25x20mm	3	<b>1.45</b>	
94	<b>R95-8937-03</b>	95-8937, 95-8937-03	Mount - Engine - LH	1	<b>18.55</b>	
95	<b>R98-9311</b>	98-9311	Swivel-Throttle	1	<b>15.65</b>	
96	<b>RX1624174250</b>	110-0972, 98-9584, 99-3453	Kubota Pulley - Fan	1	<b>45.93</b>	
97	<b>RX0175450620</b>	108-2873, 33113-025, 43-2600, 48-7640, 99-8363	Kubota Bolt - Flange	4	<b>1.85</b>	
98	<b>RX1628374110</b>	104-4246, 99-3461	Kubota Fan	1	<b>71.69</b>	
99	<b>RX1624974280</b>	105-3745, X1624974280	Kubota Fan Drive Pulley	1	<b>140.72</b>	
100	<b>RX1526312370</b>	98-9611, 99-8343	Kubota Gasket - Muffler	1	<b>7.18</b>	

All original equipment manufacturers names and part numbers are used for identification purposes only, and we are in no way implying that our products are original equipment parts. Prices subject to change without notice.



# Replaces Toro Reelmaster 3100-D Parts

Traction Unit - Model 03200  
Engine



Item No	R&R Part No.	OEM Part No.	Description	Qty Req	Price Each	Order Quantity
101	<b>R3253-4</b>	01-166-0110, 01-166-0510, 23-10-GD, 24-7170, 30-8520, 3253-4, 42-9850, 48-9350, 48-9360, 48-9570, 68-9420, 99-7577	Washer - Lock 5/16 Zinc	4	<b>0.14</b>	
102	<b>R33014-00</b>	33014-00, 42-9580	Nut - Jam 8mm x 1.25	4	<b>0.28</b>	
103	<b>R104-4834</b>	104-4834, 95-8942	Muffler	1	<b>329.65</b>	
104	<b>R92-2379</b>	92-2379	Clamp - Hose	2	<b>0.41</b>	
105	<b>R99-3425-03</b>	99-3425, 99-3425-03	Guard - Exhaust	1	<b>40.80</b>	
107	<b>R95-8926-03</b>	95-8926, 95-8926-03, 99-3618-03	Mount - Engine - Front	1	<b>20.20</b>	
108	<b>R3296-2</b>	32127-10, 3296-2, 9157404	Nut - #10 Lock	1	<b>0.94</b>	
109	<b>R300403</b>	32144-4, 32144-63, 49-2040	Bolt - Hex HD 1/4-20 x 1/2	4	<b>0.35</b>	
110	<b>R99-3412-03</b>	99-3412, 99-3412-03	Pulley	1	<b>137.25</b>	
112	<b>R99-3514</b>	99-3514	Cover	1	<b>8.05</b>	
111	<b>R95-8943-03</b>	95-8943-03	Bracket-Muffler	1	<b>22.45</b>	
113	<b>R56-7971</b>	56-7971	Clamp - Tube	2	<b>16.05</b>	

All original equipment manufacturers names and part numbers are used for identification purposes only, and we are in no way implying that our products are original equipment parts. Prices subject to change without notice.



# Replaces Toro Reelmaster 3100-D Parts

Traction Unit - Model 03200  
Engine



Item No	R&R Part No.	OEM Part No.	Description	Qty Req	Price Each	Order Quantity
114	<b>R453011</b>	01-166-0100, 01-166-0120, 01-166-0270, 01-166-0500, 01-166-0600, 01-166-0620, 132-4593, 2356-3, 237-12, 24-10-AD, 24-11-AD, 24-11-BD, 24-12-AD, 24-12-BD, 30-9310, 32-8190, 3256-24, 3256-3, 3256-36, 3256-4, 453011, 47-9950, 48-9220, 513458, 7-0052	Washer - Flat 3/8 SAE Y/Zinc	1	<b>0.11</b>	
115	<b>R3296-29</b>	1-804256, 3290-357, 3296-29, 915662P	Locknut - 5/16-18 ESNA	1	<b>2.95</b>	
116	<b>R107-9089</b>	104-4885, 107-9089, 108-4426	Water Pump Assy	1	<b>334.80</b>	

All original equipment manufacturers names and part numbers are used for identification purposes only, and we are in no way implying that our products are original equipment parts. Prices subject to change without notice.