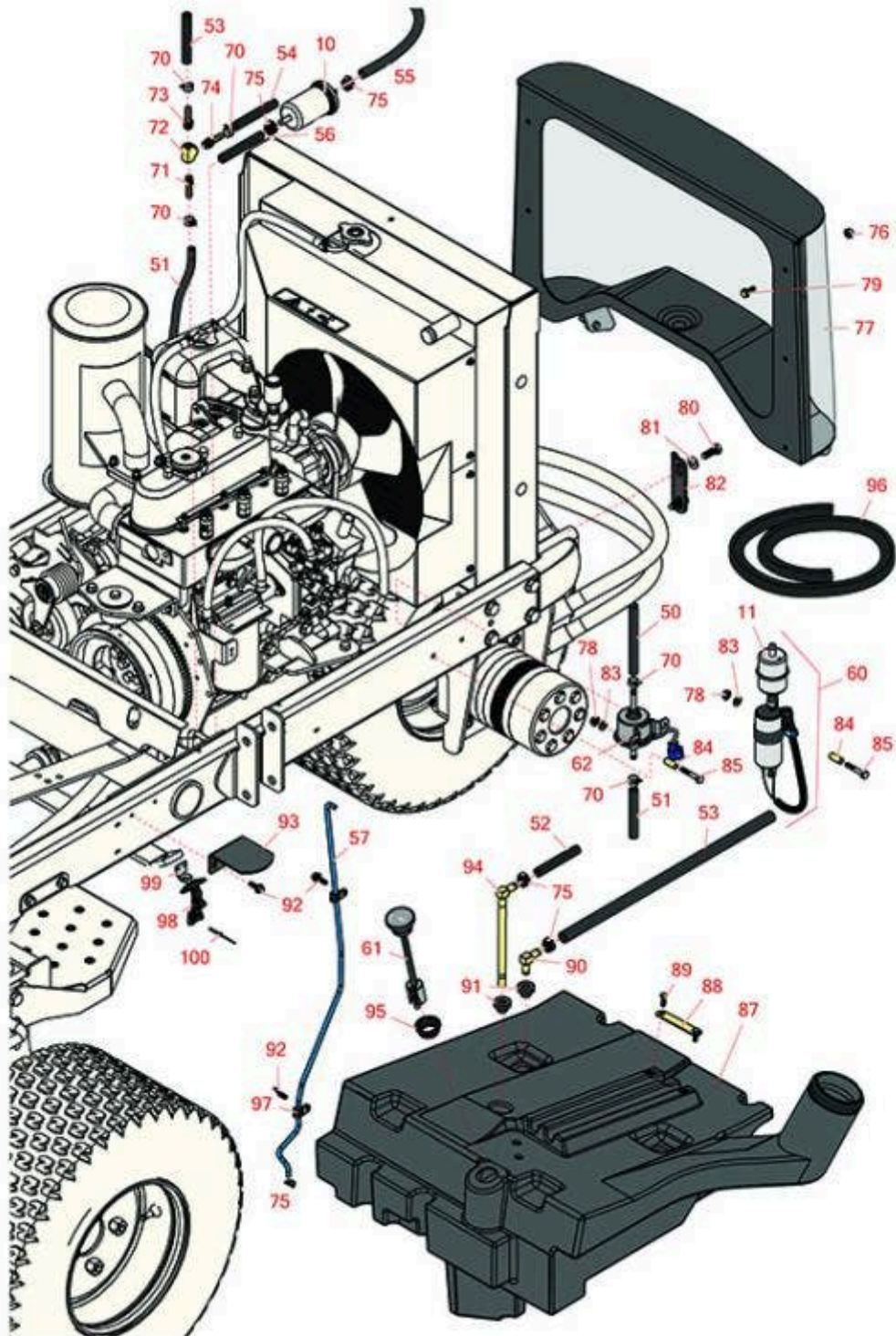




# Replaces Toro Reelmaster 3100-D Parts

*Traction Unit - Model 03170*

*Fuel Tank*



All original equipment manufacturers names and part numbers are used for identification purposes only, and we are in no way implying that our products are original equipment parts. Prices subject to change without notice.



# Replaces Toro Reelmaster 3100-D Parts

*Traction Unit - Model 03170*

*Fuel Tank*



Item No	R&R Part No.	OEM Part No.	Description	Qty Req	Price Each	Order Quantity
---------	--------------	--------------	-------------	---------	------------	----------------

## Filters

10	<b>RRF10520</b>		SilverGuard Fuel Filter	1	<b>5.35</b>	
10	<b>RX1258143012</b>	108-3828, 98-7612	Kubota Fuel Filter	1	<b>4.75</b>	
11	<b>R112-7836</b>	112-7836, RR ONLY	Baldwin Fuel Filter - in Line	1	<b>6.90</b>	
11	<b>RRF10534</b>	112-7836, RR ONLY, RRONLY	SilverGuard Fuel Filter - Inline	1	<b>5.95</b>	

## Hoses

50	<b>R110-4109</b>	104-0076, 110-4109, 56-2241	Hose-Fuel	1	<b>6.45</b>	
51	<b>R110-5701</b>	110-5701, 99-3185, 99-7191	Hose-Fuel	1	<b>8.95</b>	
52	<b>R110-4100</b>	110-4100, 92-6068	Hose-Fuel	2	<b>14.55</b>	
52	<b>R110-8802</b>	110-8802, 93-5483	Hose-Fuel	1	<b>18.90</b>	
53	<b>R110-6187</b>	110-6187	Hose-Fuel	1	<b>8.10</b>	
54	<b>R110-8751</b>	110-8751	Hose-Fuel	1	<b>5.30</b>	
55	<b>R110-4110</b>	104-4848, 110-4110, 54-8040	Hose-Fuel	1	<b>5.35</b>	
56	<b>R110-6186</b>	110-6186, 71-3383	Hose - Fuel	1	<b>9.70</b>	
57	<b>R95-8615</b>	95-8615	Tube-Breather	1	<b>24.15</b>	

## Gauges and Controls

All original equipment manufacturers names and part numbers are used for identification purposes only, and we are in no way implying that our products are original equipment parts. Prices subject to change without notice.



# Replaces Toro Reelmaster 3100-D Parts

*Traction Unit - Model 03170*

*Fuel Tank*



Item No	R&R Part No.	OEM Part No.	Description	Qty Req	Price Each	Order Quantity
60	<b>R110-8806</b>	110-8806	Fuel Pump and Filter Assy	1	<b>165.40</b>	
61	<b>R95-8971</b>	95-8971	Guage-Fuel	1	<b>54.10</b>	
62	<b>RXRC60151350</b>	104-5215, 107-0122, 112-8400, 99-3464	Kubota Fuel Pump - Electric	1	<b>146.70</b>	
<b>Other Parts Available</b>						
70	<b>R92-2379</b>	92-2379	Clamp - Hose	5	<b>0.41</b>	
71	<b>R304-73</b>	304-73, 307-73, 353-973	Connector-Hose	1	<b>7.50</b>	
72	<b>R354-20</b>	354-20	Fitting-Tee	1	<b>7.50</b>	
73	<b>R354-21</b>	354-21	Fitting-Barb	1	<b>3.65</b>	
74	<b>R354-22</b>	354-22	Fitting-Barb	1	<b>2.45</b>	
75	<b>R2412-108</b>	2412-108, 97406	Clamp - Worm - 1/4 - Stainless	5	<b>2.35</b>	
76	<b>R301504</b>	2296-42, 301504, 32127-24, 32128-33, 32146-17, 3296-16, 3296-42, 3296-42 , 915661P	Locknut - ESNA 1/4-20	6	<b>0.18</b>	
77	<b>R95-8724-03</b>	95-8724, 95-8724-03	Screen - Hood	1	<b>547.95</b>	
78	<b>R32128-33</b>	32128-33	Nut - 1/4-20 Flanged Serr	2	<b>0.70</b>	
79	<b>R3234-4</b>	3234-4	Bolt - Hx Ser Was HD 1/4-20 x 3/4	6	<b>0.67</b>	

All original equipment manufacturers names and part numbers are used for identification purposes only, and we are in no way implying that our products are original equipment parts. Prices subject to change without notice.



# Replaces Toro Reelmaster 3100-D Parts

Traction Unit - Model 03170

Fuel Tank



Item No	R&R Part No.	OEM Part No.	Description	Qty Req	Price Each	Order Quantity
80	<b>R323-6</b>	01-150-0010, 01-178-0608, 20-47-AD, 20-47-AGD, 3224-2, 323-6, 49-3510, 908034P, 908332	Bolt - Hex HD 3/8-16 x 1 GR5 YZ	4	<b>0.59</b>	
81	<b>R453011</b>	01-166-0100, 01-166-0120, 01-166-0270, 01-166-0500, 01-166-0600, 01-166-0620, 132-4593, 2356-3, 237-12, 24-10-AD, 24-11-AD, 24-11-BD, 24-12-AD, 24-12-BD, 30-9310, 32-8190, 3256-24, 3256-3, 3256-36, 3256-4, 453011, 47-9950, 48-9220, 513458, 7-0052	Washer - Flat 3/8 SAE Y/Zinc	4	<b>0.11</b>	
82	<b>R95-8728</b>	95-8728	Bracket - Hood Pivot	2	<b>11.55</b>	
83	<b>R3256-22</b>	24-9-BD, 3-1032, 3256-1, 3256-22, 93-0954, 93-0989	Washer - Flat 1/4 Yellow	2	<b>0.12</b>	
84	<b>R77-3180</b>	77-3180	Spacer	2	<b>19.15</b>	

All original equipment manufacturers names and part numbers are used for identification purposes only, and we are in no way implying that our products are original equipment parts. Prices subject to change without notice.



# Replaces Toro Reelmaster 3100-D Parts

Traction Unit - Model 03170

Fuel Tank



Item No	R&R Part No.	OEM Part No.	Description	Qty Req	Price Each	Order Quantity
85	<b>R400116</b>	20-7-AD, 30-9680, 321-69, 321-9, 3222-3, 400116	Bolt - Hex HD 1/4-20 x 1-1/2	2	<b>0.65</b>	
87	<b>R95-8620</b>	95-8620	Tank-Fuel	1	<b>229.80</b>	
88	<b>R95-8881</b>	95-8881	Strap - Fuel Line	1	<b>7.95</b>	
89	<b>R321-2</b>	01-150-0200, 01-178-0404, 20-1-AD, 24-2420, 30-4530, 321-2, 32143-9, 513313	Bolt - Hex HD	2	<b>2.55</b>	
90	<b>R46-6550</b>	46-6550	Fitting - Elbow 90	2	<b>21.75</b>	
91	<b>R46-6560</b>	46-6560	Bushing	2	<b>3.55</b>	
92	<b>R32144-10</b>	32140-81, 32144-10, 32144-3, 34-140-AMVD	Bolt - 1/4-20 x 3/4 Serrated Hx Wshr	4	<b>2.85</b>	
93	<b>R95-8968-03</b>	95-8968, 95-8968-03	Support-Tank, Fuel	1	<b>12.05</b>	
94	<b>R110-9689</b>	110-9689, R110-9689	Pipe-Stand	1	<b>38.45</b>	
95	<b>R95-8972</b>	95-8972	Grommet	1	<b>6.30</b>	
96	<b>R95-8809</b>	95-8809	Trim-Seal	1	<b>42.35</b>	
97	<b>R2412-72</b>	2412-72	Clip-Closed, Insul	2	<b>0.77</b>	
98	<b>R59-9740</b>	249-39, 59-9740, 60-8660, 60-8670	Flex Draw Latch Assy	2	<b>20.35</b>	

All original equipment manufacturers names and part numbers are used for identification purposes only, and we are in no way implying that our products are original equipment parts. Prices subject to change without notice.



# Replaces Toro Reelmaster 3100-D Parts

*Traction Unit - Model 03170*

*Fuel Tank*



Item No	R&R Part No.	OEM Part No.	Description	Qty Req	Price Each	Order Quantity
99	<b>R249-40</b>	249-40	Keeper - Draw Latch	2	<b>6.30</b>	
100	<b>R107-0333</b>	107-0333	Rivet- Dome Blind Pop - 1/8 x (.5-.625)	8	<b>0.94</b>	

All original equipment manufacturers names and part numbers are used for identification purposes only, and we are in no way implying that our products are original equipment parts. Prices subject to change without notice.