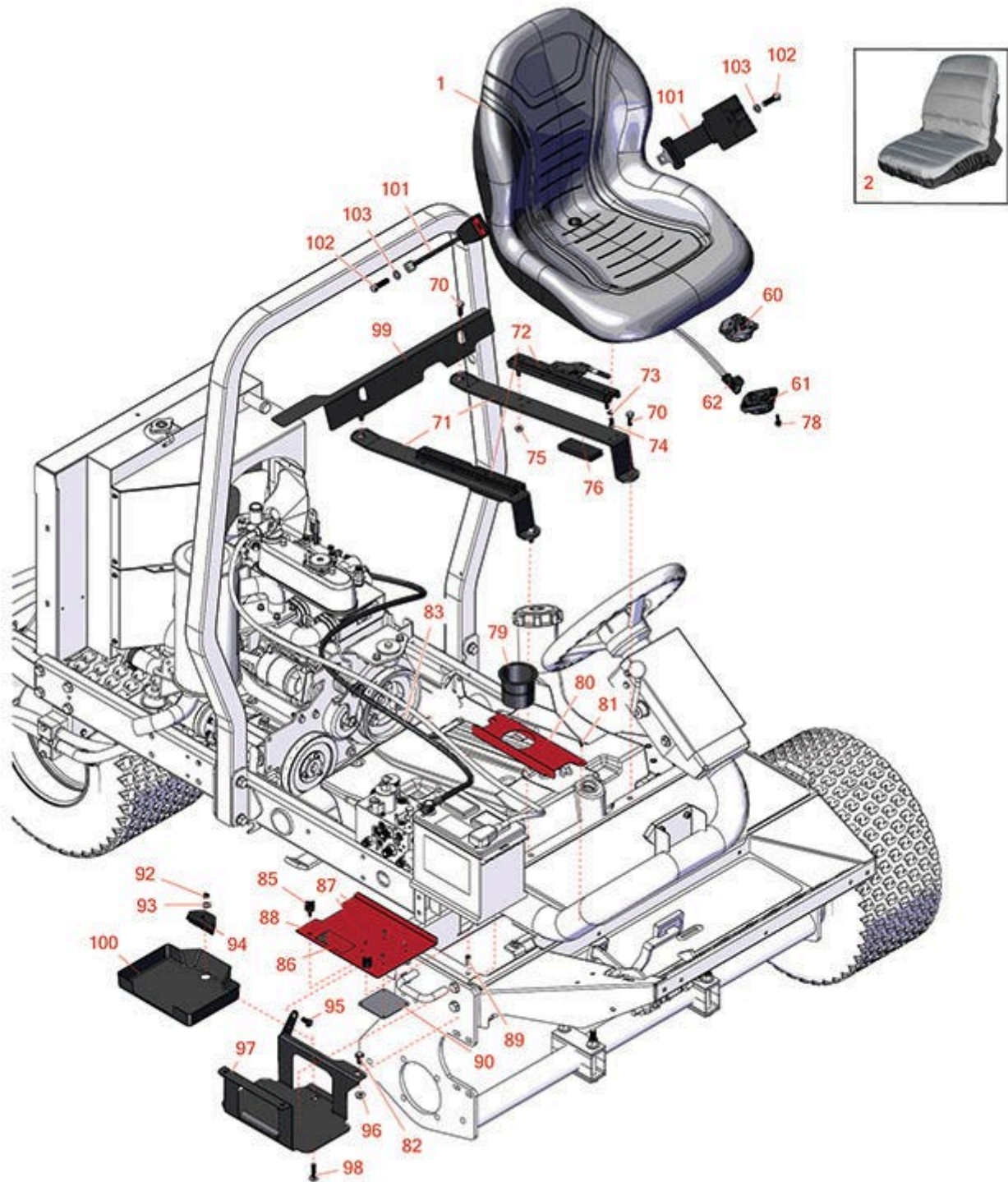




# Replaces Toro Reelmaster 3100-D Parts

*Traction Unit - Model 03170*

*Battery & Seat*



All original equipment manufacturers names and part numbers are used for identification purposes only, and we are in no way implying that our products are original equipment parts. Prices subject to change without notice.



# Replaces Toro Reelmaster 3100-D Parts

Traction Unit - Model 03170

Battery & Seat



| Item No   | R&R Part No.        | OEM Part No.   | Description  | Qty Req | Price Each    | Order Quantity |
|---|---------------------|--|--|---------|---------------|----------------|
| 1   | <b>RMXB200GY</b>    | 100-3187,<br>104-4620,<br>104-7620,<br>21-4880,<br>351-59,<br>351-76,<br>49-8130,<br>63-9410,<br>66-5400,<br>75-9190,<br>750105,<br>92-6280,<br>MXB200GY | Milsco Seat XB200 - Grey                             | 1       | <b>191.30</b> |                |
| <i>Tech Note: This seat will not accept seat belts:</i> |                     |  |  |         |               |                |
| 2   | <b>R120-5179</b>    | 120-5179   | Large Seat Cover - Gray                              | 1       | <b>47.05</b>  |                |
| <b>Gauges and controls</b>                              |                     |  |  |         |               |                |
| 60  | <b>R151541</b>      | R&R ON,<br>LY  | Delta Seat Switch - Twist Mount 1 Pole Normally Open | 1       | <b>17.90</b>  |                |
| 61  | <b>R92-6282</b>     | 62-6282,<br>92-6282  | Switch - Kill - Seat                                 | 1       | <b>18.95</b>  |                |
| 62  | <b>R150229</b>      | 82-2190  | Switch - Operator Presence                           | 1       | <b>20.55</b>  |                |
| <b>Other Parts Avialable</b>                            |                     |  |  |         |               |                |
| 70  | <b>R3234-11</b>     | 3234-11  | Bolt - Hex Washer HD                                 | 4       | <b>1.05</b>   |                |
| 71  | <b>R104-4847-03</b> | 104-4847-03  | Strap - Seat Support                                 | 2       | <b>43.20</b>  |                |
| 72  | <b>R150224</b>      | 133-8896,<br>92-8990,<br>92-8990/92-8991,<br>92-8991   | Adjusters - Seat (Set of 2)                          | 1       | <b>145.95</b> |                |
| 73  | <b>R3255-8</b>      | 3255-8   | Washer - Lock 5/16 Ext                               | 4       | <b>0.08</b>   |                |
| 74  | <b>R3234-14</b>     | 3234-14,<br>3234-23  | Bolt - Hex Serrated Washer HD                        | 4       | <b>0.83</b>   |                |

All original equipment manufacturers names and part numbers are used for identification purposes only, and we are in no way implying that our products are original equipment parts. Prices subject to change without notice.



# Replaces Toro Reelmaster 3100-D Parts

*Traction Unit - Model 03170*

*Battery & Seat*



| Item No | R&R Part No.       | OEM Part No.                                      | Description                                 | Qty Req | Price Each   | Order Quantity |
|---------|--------------------|---|---|---------|--------------|----------------|
| 75      | <b>R104-8300</b>   | 104-8300,<br>104-8300 ,<br>119-4041               | Locknut - 5/16-18 Flanged Y/Zinc            | 4       | <b>0.47</b>  |                |
| 76      | <b>R95-8896</b>    | 95-8896   | Foam  | 2       | <b>2.75</b>  |                |
| 78      | <b>R32144-10</b>   | 32140-81,<br>32144-10,<br>32144-3,<br>34-140-AMVD | Bolt - 1/4-20 x 3/4 Serrated Hx Wshr        | 2       | <b>2.85</b>  |                |
| 79      | <b>R94-1410</b>    | 94-1410   | Holder - Beverage Can                       | 1       | <b>3.55</b>  |                |
| 80      | <b>R95-8817-01</b> | 95-8817,<br>95-8817-01                            | Cover - Battery - Inner                     | 1       | <b>13.75</b> |                |
| 81      | <b>R300403</b>     | 32144-4,<br>32144-63,<br>49-2040                  | Bolt - Hex HD 1/4-20 x 1/2                  | 2       | <b>0.35</b>  |                |
| 82      | <b>R3234-1</b>     | 321-11,<br>3234-1                                 | Bolt - Flanged Serrated Hex HD 3/8-16 x 3/4 | 3       | <b>1.45</b>  |                |
| 83      | <b>R95-8854</b>    | 95-8854   | Cable - Battery - Neg                       | 1       | <b>56.60</b> |                |
| 85      | <b>R233-70</b>     | 233-70,<br>42619                                  | Knob - Star - Three Prong                   | 2       | <b>14.05</b> |                |
| 86      | <b>R93-7276</b>    | 93-7276   | Decal - Danger                              | 1       | <b>9.30</b>  |                |
| 87      | <b>R3269-27</b>    | 3269-27   | Rivet - Snap                                | 4       | <b>0.96</b>  |                |
| 88      | <b>R99-3602</b>    | 95-8807,<br>95-8807-01,<br>99-3602                | Battery Cover Assy                          | 1       | <b>34.30</b> |                |
| 89      | <b>R32148-6</b>    | 32148-6   | Insert - Nut                                | 2       | <b>1.55</b>  |                |
| 90      | <b>R87-7620</b>    | 87-7620   | Shield - Terminal                           | 1       | <b>3.65</b>  |                |
| 92      | <b>R3296-29</b>    | 1-804256,<br>3290-357,<br>3296-29,<br>915662P     | Locknut - 5/16-18 ESNA                      | 1       | <b>2.95</b>  |                |

All original equipment manufacturers names and part numbers are used for identification purposes only, and we are in no way implying that our products are original equipment parts. Prices subject to change without notice.



# Replaces Toro Reelmaster 3100-D Parts

*Traction Unit - Model 03170*

*Battery & Seat*



| Item No | R&R Part No.        | OEM Part No.   | Description                   | Qty Req | Price Each    | Order Quantity |
|---------|---------------------|--|-------------------------------|---------|---------------|----------------|
| 93      | <b>R453009</b>      | 01-166-0400,<br>24-10-BD,<br>24-9-AD,<br>32-9650,<br>3256-2,<br>3256-23,<br>3256-3,<br>3256-67,<br>3290-217,<br>3556-3,<br>4-2390,<br>7-0152 | Washer - Flat 5/16 SAE        | 1       | <b>0.13</b>   |                |
| 94      | <b>R66-2490</b>     | 66-2490  | Retainer - Battery            | 1       | <b>6.05</b>   |                |
| 95      | <b>R32144-15</b>    | 32144-15   | Bolt - Hex Washer HD          | 1       | <b>4.35</b>   |                |
| 96      | <b>R32128-43</b>    | 30-8990,<br>32128-43,<br>3290-357  | Nut - Flanged Whiz - 3/8-16   | 3       | <b>0.62</b>   |                |
| 97      | <b>R95-8796-03</b>  | 95-8796,<br>95-8796-03   | Support -Battery              | 1       | <b>85.75</b>  |                |
| 98      | <b>R3230-6</b>      | 3230-6   | Bolt - Carraige               | 1       | <b>1.65</b>   |                |
| 99      | <b>R104-4833-03</b> | 104-4833-03  | Shield - Heat                 | 1       | <b>45.35</b>  |                |
| 100     | <b>R99-3513</b>     | 99-3513  | Tray - Battery                | 1       | <b>41.40</b>  |                |
| 101     | <b>R150848</b>      | 100-4928,<br>110-0413,<br>110-9720,<br>95-8910   | Belt-Seat                     | 1       | <b>194.60</b> |                |
| 102     | <b>R3212-4</b>      | 3212-3,<br>3212-4  | Bolt - Hex HD 7/16-20 x 1 GR5 | 2       | <b>2.45</b>   |                |
| 103     | <b>R3253-6</b>      | 01-166-0710,<br>23-12-GD,<br>3253-6,<br>59-7590  | Washer - Lock 7/16 Zinc       | 2       | <b>0.29</b>   |                |

All original equipment manufacturers names and part numbers are used for identification purposes only, and we are in no way implying that our products are original equipment parts. Prices subject to change without notice.