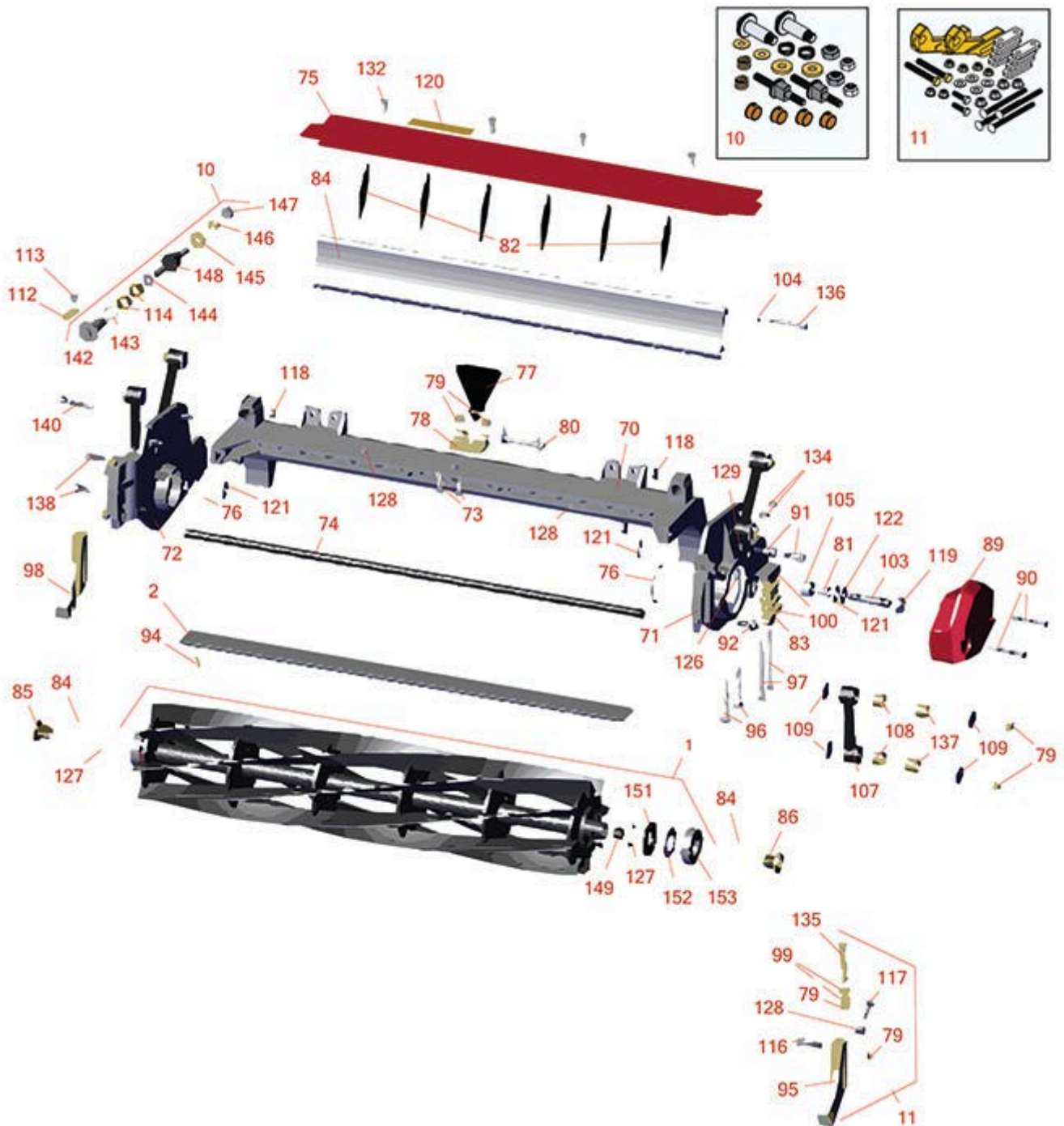




# Replaces Toro Reelmaster 3100-D Parts

32in DPA Cutting Unit - Model 03191  
Reel & Bedknife



All original equipment manufacturers names and part numbers are used for identification purposes only, and we are in no way implying that our products are original equipment parts. Prices subject to change without notice.



# Replaces Toro Reelmaster 3100-D Parts

32in DPA Cutting Unit - Model 03191  
Reel & Bedknife



Item No	R&R Part No.	OEM Part No.	Description	Qty Req	Price Each	Order Quantity
---------	--------------	--------------	-------------	---------	------------	----------------

## R&R Reels, Lifetime Guaranteed

1	<b>R137-8483</b>	137-8483	Reel - 8 Blade Razor Series Radial w/Bearings and Seals 32x7	1	<b>601.35</b>	
1	<b>R137-8482</b>	137-8482	Reel - 5 Blade Razor Series Radial w/Bearings and Seals 32x7	1	<b>572.95</b>	

## R&R Bedknives, Lifetime Guaranteed

2	<b>R114-9389</b>	114-9389	Bedknife - 32 in Unit - Standard	1	<b>62.60</b>	
2	<b>R114-9391</b>	114-9391	Bedknife - 32 in Unit - Heavy Duty	1	<b>62.80</b>	

## R&R Razor Tool Steel Bedknives, Lifetime Guaranteed

2	<b>R112-8956</b>	112-8956	Bedknife - Razor Tool Steel - 32 x 3/8 Fairway	1	<b>121.55</b>	
---	------------------	----------	--	---	---------------	--

## Overhaul Kits

10	<b>R120-7230</b>	120-7230	Overhaul Kit - Fits DPA Units	1	<b>180.50</b>	
<i>Tech Note: Incl 2 ea.: R108-0015, R115-7039, R119-4155, R120-5116, R120-5118, R120-5120, R3296-33, R3296-48 &amp; 4 ea: R106-5344:</i>						
11	<b>R110-9600</b>	110-9600	High HOC Kit	1	<b>162.75</b>	
<i>Tech Note: Includes 1 ea.: R120-0404, R120-0405 &amp; 2 ea: R112-7451, R322-16, R445722 &amp; 4 ea.: R106-9758, R104-8300, R453011, R104-8301 &amp; 8 ea: R106-3925:</i>						

## Other Parts Available

70	<b>R112-8978</b>	112-8978	Frame - Center 32 in Unit	1	<b>296.70</b>	
71	<b>R137-5976</b>	137-5976	Side Plate Assy - 7 in LH Aluminum	1	<b>211.60</b>	
72	<b>R137-5979</b>	137-5979	Side Plate Assy - 7 in RH Aluminum	1	<b>211.60</b>	

All original equipment manufacturers names and part numbers are used for identification purposes only, and we are in no way implying that our products are original equipment parts. Prices subject to change without notice.



# Replaces Toro Reelmaster 3100-D Parts

32in DPA Cutting Unit - Model 03191  
Reel & Bedknife



Item No	R&R Part No.	OEM Part No.	Description	Qty Req	Price Each	Order Quantity
73	<b>R3231-25</b>	01-173-0610, 30-9970, 3231-25, 3231-3, 900064P	Bolt - Carriage 3/8-16 x 1-1/4	2	<b>0.66</b>	
74	<b>R112-8979</b>	112-8979	Tube - Support - 32 in Units	1	<b>49.80</b>	
75	<b>R112-8983</b>	112-8983	Front Grass Shield Assy - 32 in Units	1	<b>44.65</b>	
76	<b>R117-8177</b>	117-8177	O-Ring	2	<b>2.45</b>	
77	<b>R110-4088-03</b>	110-4088-03, 119-8010-03	Kickstand	1	<b>21.25</b>	
78	<b>R110-4058</b>	110-4058	Bracket - Chain	1	<b>19.40</b>	
79	<b>R104-8301</b>	104-8301, 104-9301, 109-6658, 133-7570	Locknut - 3/8-16 Nylon Flanged	10	<b>0.84</b>	
80	<b>R107-7400</b>	107-7400	Pin - Lynch	1	<b>6.95</b>	
81	<b>R56-9520</b>	56-9520	Bushing - Nyliner	2	<b>1.55</b>	
82	<b>R110-1706</b>	110-1706	Deflector	6	<b>3.40</b>	
83	<b>R106-3924</b>	106-3924	Bracket - Rear Roller	2	<b>15.70</b>	
84	<b>R125-1998</b>	125-1998	Grass Shield - Rear	1	<b>56.50</b>	
85	<b>R127-7109</b>	127-7109	Insert-Threaded - 7 in Reel (RH)	1	<b>25.40</b>	
86	<b>R127-7111</b>	127-7111	Insert-Threaded - 7 in Reel (LH)	1	<b>25.40</b>	
88	<b>R112-6967</b>	112-6967	O-Ring	2	<b>1.95</b>	
89	<b>R119-0614-01</b>	119-0614-01	Weight	1	<b>76.40</b>	

All original equipment manufacturers names and part numbers are used for identification purposes only, and we are in no way implying that our products are original equipment parts. Prices subject to change without notice.



# Replaces Toro Reelmaster 3100-D Parts

32in DPA Cutting Unit - Model 03191

Reel & Bedknife



Item No	R&R Part No.	OEM Part No.	Description	Qty Req	Price Each	Order Quantity
90	<b>R101526</b>	01-150-0970, 01-178-0620, 101526, 20-53-AGD, 321-11, 3224-8, 323-11, 323-12, 323-31, 323-4, 323-47	Bolt - Hex HD 3/8-16 x 2-1/2 GR5	2	<b>0.91</b>	
91	<b>R107-2979</b>	107-2979	Bolt - Shoulder	6	<b>3.25</b>	
92	<b>R3234-11</b>	3234-11	Bolt - Hex Washer HD	2	<b>1.05</b>	
94	<b>R119-4151</b>	119-4151	Screw - Bedknife 5/16-18 x 17/32	10	<b>0.29</b>	
94	<b>R150476</b>	3-3816, 3-6462, 52-4910, 57-4910	Screw - Bedknife 5/16-18 x 5/8	10	<b>0.29</b>	
95	<b>R120-0404</b>	120-0404	Bracket- High HOC - LH	1	<b>53.80</b>	
<i>Tech Note: Fits 2011 &amp; Newer:</i>						
96	<b>R3230-26</b>	3230-26	Screw - Carriage 5/16-18 x 3	4	<b>3.40</b>	
97	<b>R106-9758</b>		Bolt - Carriage 5/16x4	4	<b>1.55</b>	
97	<b>R3230-30</b>	3230-30	Bolt - Carriage 5/16x4 1/2	4	<b>6.30</b>	
98	<b>R120-0405</b>	120-0405	Bracket - High HOC - RH	1	<b>53.80</b>	
<i>Tech Note: Fits 2011 &amp; Newer:</i>						

All original equipment manufacturers names and part numbers are used for identification purposes only, and we are in no way implying that our products are original equipment parts. Prices subject to change without notice.



# Replaces Toro Reelmaster 3100-D Parts

32in DPA Cutting Unit - Model 03191

Reel & Bedknife



Item No	R&R Part No.	OEM Part No.	Description	Qty Req	Price Each	Order Quantity
99	<b>R453011</b>	01-166-0100, 01-166-0120, 01-166-0270, 01-166-0500, 01-166-0600, 01-166-0620, 132-4593, 2356-3, 237-12, 24-10-AD, 24-11-AD, 24-11-BD, 24-12-AD, 24-12-BD, 30-9310, 32-8190, 3256-24, 3256-3, 3256-36, 3256-4, 453011, 47-9950, 48-9220, 513458, 7-0052	Washer - Flat 3/8 SAE Y/Zinc	4	<b>0.11</b>	
100	<b>R119-0626</b>	119-0626	Shim - Roller - 1/4 in - Slotted	8	<b>5.45</b>	
103	<b>R106-9623</b>	106-9623	Bolt - Bedbar	2	<b>14.15</b>	
104	<b>R3256-74</b>	3256-74	Washer - Flat	1	<b>0.65</b>	
105	<b>R106-9618</b>	106-9618	Bushing - Rubber	2	<b>7.90</b>	
107	<b>R16-9759</b>	16-9759	Link Assy	4	<b>44.50</b>	
108	<b>R93-6981</b>	93-6981	Spacer	8	<b>4.60</b>	
109	<b>R93-8806</b>	93-8806	Washer-Hardened	16	<b>1.45</b>	
112	<b>R99-2097</b>	99-2097	Detent - Bed Bar Adjuster	2	<b>8.75</b>	
113	<b>R114-9396</b>	114-9396, 119-4067	Bolt - Hex HD 5/16-18 x 3/8	2	<b>1.45</b>	

All original equipment manufacturers names and part numbers are used for identification purposes only, and we are in no way implying that our products are original equipment parts. Prices subject to change without notice.



# Replaces Toro Reelmaster 3100-D Parts

32in DPA Cutting Unit - Model 03191  
Reel & Bedknife



Item No	R&R Part No.	OEM Part No.	Description	Qty Req	Price Each	Order Quantity
114	<b>R106-5344</b>	106-5344	Bushing - Flanged and Keyed	4	<b>5.05</b>	
116	<b>R3231-4</b>	01-157-0440, 01-173-0612, 3231-4	Bolt - Carriage 3/8-16 x 1-1/2	2	<b>1.20</b>	
117	<b>R322-16</b>	322-16, Apr-00	Bolt - Hex HD 5/16-18 x 1-1/8	2	<b>1.65</b>	
118	<b>R32128-43</b>	30-8990, 32128-43, 3290-357	Nut - Flanged Whiz - 3/8-16	6	<b>0.62</b>	
119	<b>R3296-33</b>	3296-33	Locknut - 5/8-18 ESNA Jam	2	<b>1.30</b>	
120	<b>R93-6688</b>	93-6688	Decal - Warning	1	<b>2.30</b>	
121	<b>R61-1950</b>	61-1950	Washer - Nylon - Bed Bar	4	<b>0.64</b>	
122	<b>R453017</b>	01-166-0050, 01-166-0240, 01-166-0800, 24-13-AD, 24-14-AD, 32-8110, 3256-26, 3256-6, 453017, 69-8980, 87-7270	Washer - Flat 1/2	2	<b>0.28</b>	
126	<b>R302-5</b>	21-6010, 302-11, 302-37, 302-47, 302-5, 302-57, 302-58, 302-6, 31-0300, 32-9660, 60-0800, 62-3880, 92-4181	Fitting - Grease	2	<b>0.27</b>	
127	<b>R92-2601</b>	92-2601	Snap Ring	2	<b>2.45</b>	

All original equipment manufacturers names and part numbers are used for identification purposes only, and we are in no way implying that our products are original equipment parts. Prices subject to change without notice.



# Replaces Toro Reelmaster 3100-D Parts

32in DPA Cutting Unit - Model 03191

Reel & Bedknife



Item No	R&R Part No.	OEM Part No.	Description	Qty Req	Price Each	Order Quantity
128	R445722	30-8980, 32128-2, 32128-20, 32128-20, 445722	Nut - Serrated Washer	6	0.66	
129	R170714	302-34, 302-39, 62-3520	Fitting - Pressure Relief	2	2.25	
132	R3234-7	3234-7	Bolt - Hex Washer HD 5/16-18 x 5/8	4	1.30	
134	R104-8300	104-8300, 104-8300, 119-4041	Locknut - 5/16-18 Flanged Y/Zinc	6	0.47	
135	R112-7451	100-9429, 112-7451	Bolt - Hex Tap 3/8-16 x 2-3/4	2	1.95	
136	R322-14	01-150-0830, 01-178-0524, 30-8900, 322-14	Bolt - Hex HD 5/16-18 x 3 GR5	1	2.15	
137	R94-8945	94-8945	Bushing - Bronze - Link Bar	8	2.55	
138	R323-6	01-150-0010, 01-178-0608, 20-47-AD, 20-47-AGD, 3224-2, 323-6, 49-3510, 908034P, 908332	Bolt - Hex HD 3/8-16 x 1 GR5 YZ	2	0.59	
140	R107-7773	107-7773	Bolt - Soc HD Cap 5/16-18 x 2-1/2	1	7.50	
142	R120-5118	120-5118	Shaft - Adjuster	2	31.05	
<i>Tech Note: 2012 &amp; Newer:</i>						
143	R120-5116	120-5116	Washer - Wave	2	6.90	

All original equipment manufacturers names and part numbers are used for identification purposes only, and we are in no way implying that our products are original equipment parts. Prices subject to change without notice.



## Replaces Toro Reelmaster 3100-D Parts

32in DPA Cutting Unit - Model 03191  
Reel & Bedknife



Item No	R&R Part No.	OEM Part No.	Description	Qty Req	Price Each	Order Quantity
144	<b>R108-0015</b>	108-0015	Washer - Flat	2	<b>1.20</b>	
145	<b>R119-4155</b>	119-4155	Washer - Hardened	2	<b>7.50</b>	
146	<b>R120-5120</b>	120-5120	Spring - Compression	2	<b>2.35</b>	
147	<b>R3296-48</b>	119-4039, 32146-7, 3296-34, 3296-48	Locknut - 7/16-14 ESNA	2	<b>0.55</b>	
148	<b>R115-7039</b>	115-7039	Screw - Adjuster - Bedbar	2	<b>29.85</b>	
149	<b>R151064</b>		Plug - Rubber - Fits R&R Reel Shaft Only	2	<b>1.20</b>	
151	<b>R127-4284</b>	127-4284	Washer - Special	2	<b>3.85</b>	
152	<b>R115-3299</b>	115-3299	Seal- Flocked	2	<b>11.40</b>	
153	<b>R115-3296</b>	115-3296	Bearing	2	<b>23.50</b>	

All original equipment manufacturers names and part numbers are used for identification purposes only, and we are in no way implying that our products are original equipment parts. Prices subject to change without notice.