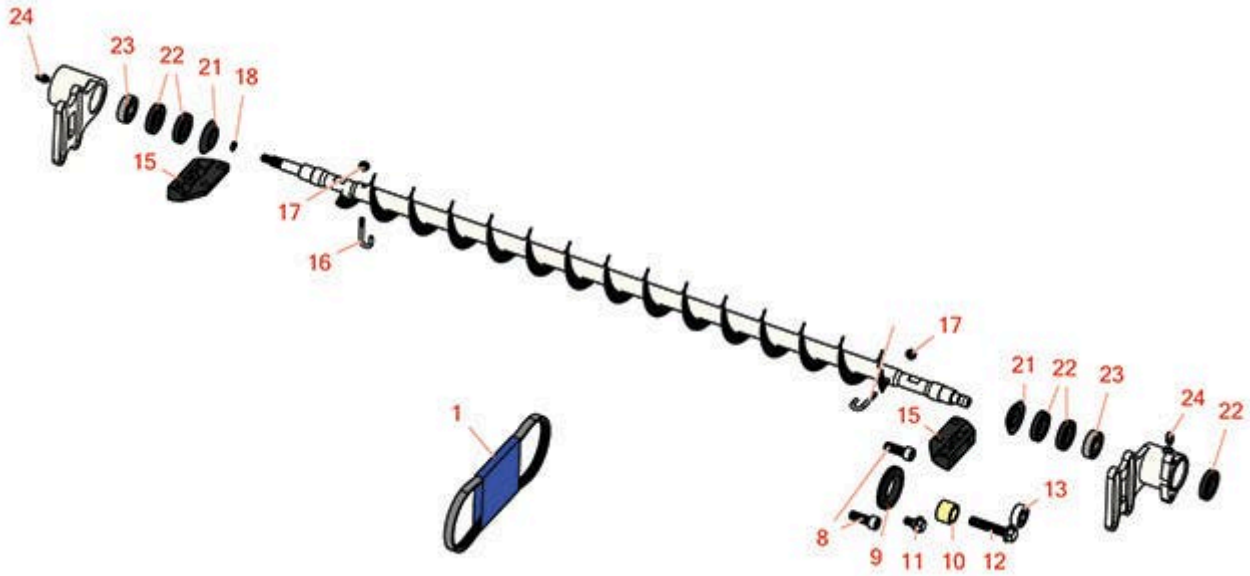




Replaces Toro Reelmaster 3100-D Parts

32in DPA Cutting Unit - Model 03191

Rear Roller Brush



All original equipment manufacturers names and part numbers are used for identification purposes only, and we are in no way implying that our products are original equipment parts. Prices subject to change without notice.



Replaces Toro Reelmaster 3100-D Parts

32in DPA Cutting Unit - Model 03191
Rear Roller Brush



Item No	R&R Part No.	OEM Part No.	Description	Qty Req	Price Each	Order Quantity
Belts						
1	R150622	115-0828	Belt- Brush, 7-INCH Reels	1	19.95	
Other Parts Available						
8	R3274-7	3247-7, 3274-7	Bolt - Soc HD Cap 3/8-16 x 1	2	1.40	
9	R240-7	240-7	Grommet - Rubber - 2 in OD	1	9.30	
10	R108-4477	108-4477	Spacer	1	10.15	
11	R27-0411	27-0411	Bolt - Shoulder	1	10.45	
12	R66-9302	3234-20, 66-9302	Screw - HHF, Whiz	1	2.85	
13	R110-1701	110-1701	Bearing	1	12.50	
15	R108-4480	108-4480	Bracket - Rear Roller Brush	2	18.80	
16	R105-9632	105-9632	Bolt - J	2	7.50	
17	R3296-2	32127-10, 3296-2, 9157404	Nut - #10 Lock	2	0.94	
18	R237-22	107-8844, 237-22, 237-78	O-Ring	1	0.62	
21	R108-4172	108-4172	Seal - Excluder	2	5.15	
22	R106-8530	106-8530	Seal - Oil	5	9.05	
23	R95-0707	95-0707	Bearing - Self Aligning	2	24.85	

All original equipment manufacturers names and part numbers are used for identification purposes only, and we are in no way implying that our products are original equipment parts. Prices subject to change without notice.



Replaces Toro Reelmaster 3100-D Parts

32in DPA Cutting Unit - Model 03191

Rear Roller Brush



Item No	R&R Part No.	OEM Part No.	Description	Qty Req	Price Each	Order Quantity
24	R302-5	21-6010, 302-11, 302-37, 302-47, 302-5, 302-57, 302-58, 302-6, 31-0300, 32-9660, 60-0800, 62-3880, 92-4181	Fitting - Grease	2	0.27	

All original equipment manufacturers names and part numbers are used for identification purposes only, and we are in no way implying that our products are original equipment parts. Prices subject to change without notice.