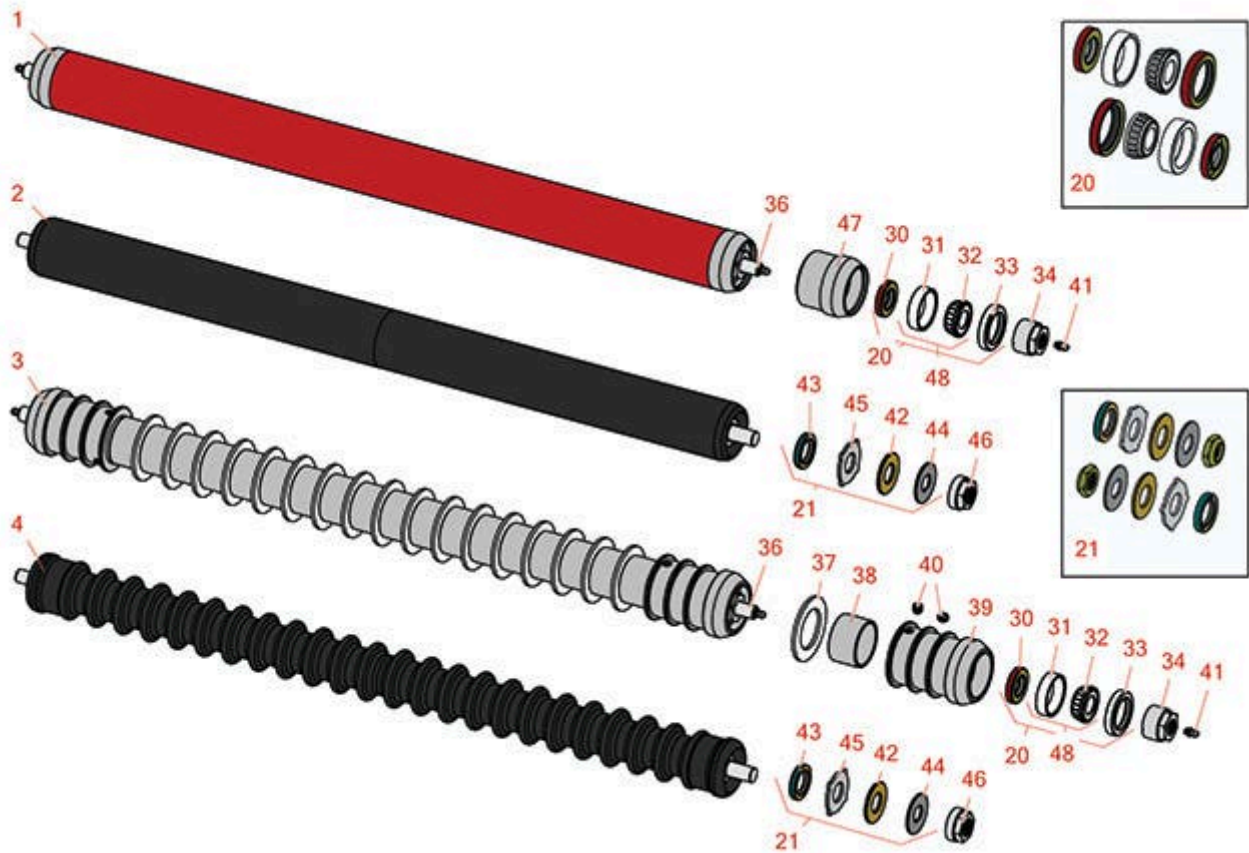




# Replaces Toro Reelmaster 3100-D Parts

32in Cutting Unit - Models 03212 & 03238  
Rollers



All original equipment manufacturers names and part numbers are used for identification purposes only, and we are in no way implying that our products are original equipment parts. Prices subject to change without notice.



# Replaces Toro Reelmaster 3100-D Parts

32in Cutting Unit - Models 03212 & 03238  
Rollers



Item No	R&R Part No.	OEM Part No.	Description	Qty Req	Price Each	Order Quantity
---------	--------------	--------------	-------------	---------	------------	----------------

## R&R Rollers to fit 32" Units

1	<b>R94-4982</b>	94-4982	Roller - Smooth Tubular Steel	1	<b>199.55</b>	
---	-----------------	---------	-------------------------------	---	---------------	--

*Tech Note: Constructed with a through shaft, this heavy duty roller uses greasable tapered bearings for extended life.:*

2	<b>R1504401</b>		Roller - Smooth UHMW Polyethylene	1	<b>251.30</b>	
---	-----------------	--	-----------------------------------	---	---------------	--

*Tech Note: Machined from solid UHMW, this low maintenance roller uses a 1" solid stainless steel shaft and requires no grease. UHMW material prevents build-up of debris.:*

3	<b>R150720</b>	94-4993	Roller - Grooved Repairable Steel	1	<b>281.35</b>	
---	----------------	---------	-----------------------------------	---	---------------	--

*Tech Note: Constructed with a through shaft and greasable tapered bearings for extended life. This roller can be repaired by unscrewing the ends and replacing the series of washers and spacers.:*

4	<b>R1504352</b>		Roller - Grooved UHMW Polyethylene	1	<b>301.55</b>	
---	-----------------	--	------------------------------------	---	---------------	--

*Tech Note: Machined from solid UHMW, this low maintenance roller rotates around a 1" solid stainless steel shaft and requires no bearings or grease. Patented groove design and smooth UHMW material prevents build-up of debris.:*

## Overhaul Kits

20	<b>R106-9607</b>	106-9607	Overhaul Kit - Roller	1	<b>51.05</b>	
----	------------------	----------	-----------------------	---	--------------	--

*Tech Note: Includes 2 ea: R253-146 Seals, R253-152 Seals, R254-78 Bearings, R254-79 Bearing Cups, R302-5 Zerks & R71-3590 Nuts:*

21	<b>R101399</b>		Overhaul Kit - UHMW 2 Pc Roller	1	<b>41.15</b>	
----	----------------	--	---------------------------------	---	--------------	--

*Tech Note: Fits all R&R 2-1/2" - 3-1/2" Dia. Black UHMW Plastic Rollers that do not use ball bearings.. Includes 2 ea.: R1503230 Star Washers, R1503470 Seals, R150333 Thrust Washers, R3296-15 Locknuts, R1503471 Bronze Thrust Washers:*

## Other Parts Available

30	<b>R253-152</b>	253-116, 253-152	Seal - Inner Roller	2	<b>3.55</b>	
----	-----------------	---------------------	---------------------	---	-------------	--

All original equipment manufacturers names and part numbers are used for identification purposes only, and we are in no way implying that our products are original equipment parts. Prices subject to change without notice.



# Replaces Toro Reelmaster 3100-D Parts

32in Cutting Unit - Models 03212 & 03238  
Rollers



Item No	R&R Part No.	OEM Part No.	Description	Qty Req	Price Each	Order Quantity
31	<b>R254-79</b>	01-103-0060, 01-103-0130, 1-633584, 252-106, 254-79, 32-7800, 32-9590	Cup - Bearing	2	<b>3.20</b>	
<i>Tech Note: Use R254-79M installation mandrel to properly install race.:</i>						
32	<b>R254-78</b>	01-102-0060, 01-102-0130, 1-633585, 254-78, 32-7790, 32-9580, 93-4813	Tapered Bearing Cone	2	<b>6.05</b>	
33	<b>R253-146</b>	105-0150, 253-143, 253-146, 253-153	Seal	2	<b>3.85</b>	
34	<b>R71-3590</b>	61-0370, 71-3590	Nut - Adjusting Roller	2	<b>9.30</b>	
36	<b>R94-4983</b>	94-4983	Shaft - Roller	1	<b>47.85</b>	
37	<b>R150672</b>		Washer - 2-3/4 Roller	17	<b>1.30</b>	
38	<b>R150671</b>		Spacer - 2 3/4 / 3 Rollers 13/16 L	0	<b>1.45</b>	
38	<b>R150676</b>		Spacer - 2-3/4 Dia x 1-1/4 L	18	<b>3.75</b>	
39	<b>R150689</b>		Roller End - Threaded	2	<b>86.45</b>	
40	<b>R150691</b>	150691	Screw - Set Nyloc 3/8-16 x 3/8	4	<b>1.10</b>	

All original equipment manufacturers names and part numbers are used for identification purposes only, and we are in no way implying that our products are original equipment parts. Prices subject to change without notice.



# Replaces Toro Reelmaster 3100-D Parts

32in Cutting Unit - Models 03212 & 03238  
Rollers



Item No	R&R Part No.	OEM Part No.	Description	Qty Req	Price Each	Order Quantity
41	<b>R302-5</b>	21-6010, 302-11, 302-37, 302-47, 302-5, 302-57, 302-58, 302-6, 31-0300, 32-9660, 60-0800, 62-3880, 92-4181	Fitting - Grease	2	<b>0.27</b>	
42	<b>R1503471</b>		Washer - Thrust SAE660 Bronze	2	<b>4.20</b>	
43	<b>R1503470</b>		Seal - Inner Wiper	2	<b>5.85</b>	
44	<b>R150333</b>		Washer - Flat Keyed Outer SS	2	<b>5.15</b>	
45	<b>R1503230</b>		Washer - Thrust Outer Keyed	2	<b>6.05</b>	
46	<b>R150368</b>		Nut - Adjusting	2	<b>13.45</b>	
47	<b>R61-0380</b>	61-0380	Roller End - Cap Solid	2	<b>46.15</b>	
48	<b>R500534</b>	1-633585	Bearing - with Cup	2	<b>11.80</b>	

All original equipment manufacturers names and part numbers are used for identification purposes only, and we are in no way implying that our products are original equipment parts. Prices subject to change without notice.