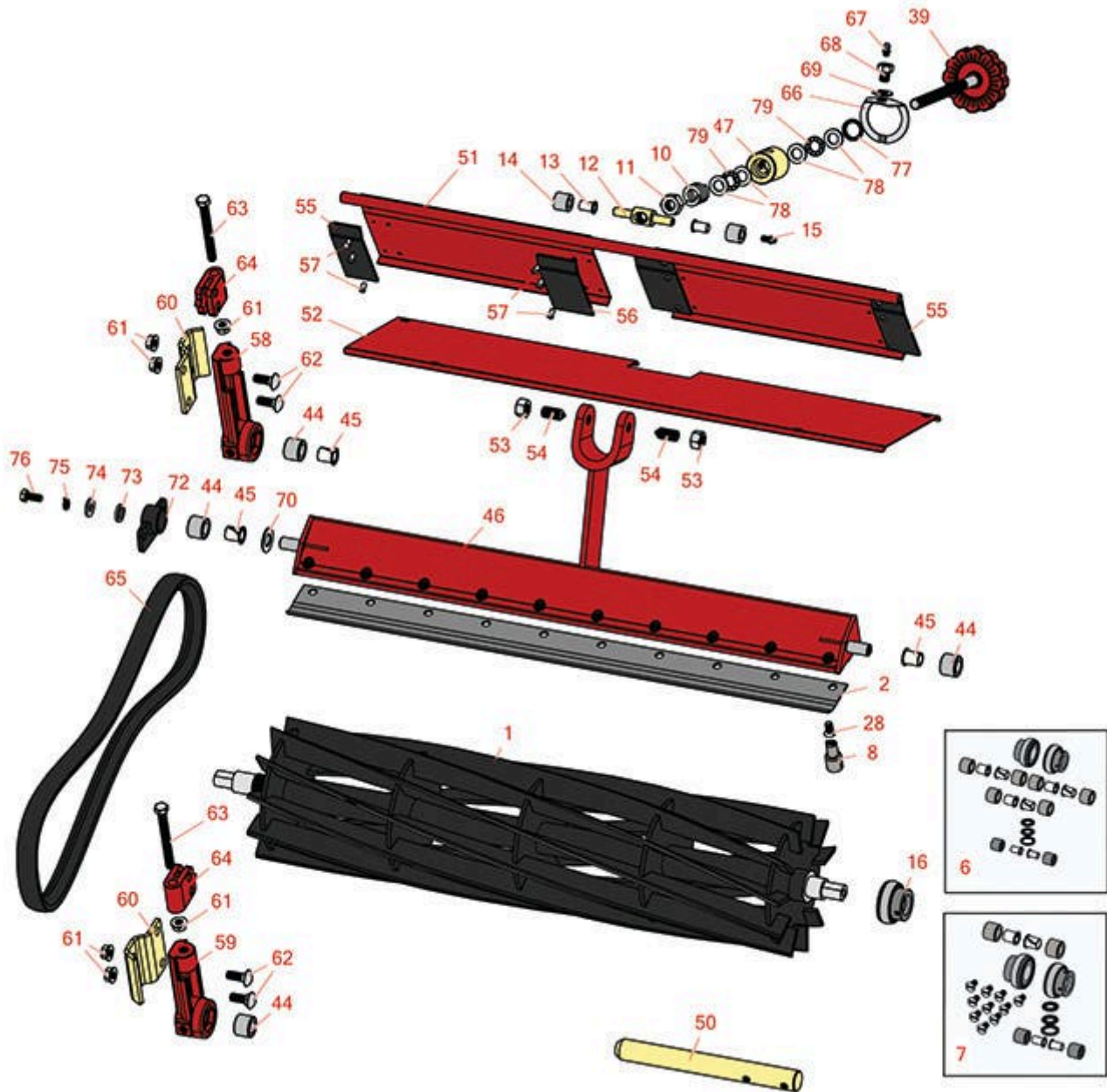




Replaces Toro Reelmaster 216 Parts

Cutting Unit
Reel & Bedknife



All original equipment manufacturers names and part numbers are used for identification purposes only, and we are in no way implying that our products are original equipment parts. Prices subject to change without notice.



Replaces Toro Reelmaster 216 Parts

Cutting Unit
Reel & Bedknife



Item No	R&R Part No.	OEM Part No.	Description	Qty Req	Price Each	Order Quantity
R&R Reels, Lifetime Guaranteed						
1	R12-7059	12-7059, 61-0260	Reel - 5 Blade RH/Rear	2	294.40	
1	R12-7079	12-7079, 61-0270	Reel - 5 Blade LH	1	294.40	
1	R12-7089	12-7089, 61-0261	Reel - 8 Blade RH/Center	2	335.85	
1	R12-7099	12-7099, 61-0271	Reel - 8 Blade LH	1	322.45	
1	R13-1699	13-1699	Reel - 11 Blade RH/Rear	2	369.15	
1	R13-1709	13-1709	Reel - 11 Blade LH	1	370.85	
R&R Bedknives, Lifetime Guaranteed						
2	R62-5180	105-6785, 61-0800, 62-5180	Bedknife - Lowcut - 27 in Unit	1	50.35	
R&R Razor Tool Steel Bedknives, Lifetime Guaranteed						
2	R112-8910	112-8910	Bedknife - Razor Tool Steel - 27 High Cut	1	108.50	
Overhaul Kits & Service Tools						
6	R150545		Overhaul Kit - Cutting Unit	0	113.65	
<i>Tech Note: Includes 6 ea.: R56-9510 Rubber Bushings, R56-9520 Nyliner Bushings; 2 ea.: R52-2890 Bushings, R71-1360 Reel Bearings, R62-5510 Bushings, R257-6 Thrust Bearings; 1 ea.: R253-84 Seal:</i>						
7	R13-3649		Overhaul Kit - Cutting Unit	0	70.70	
<i>Tech Note: Includes 10 ea.: R150476 Screws; 2 ea.: R257-6 Bearings, R52-2890 Bushings, R56-9510 Bushings, R56-9520 Bushings, R62-5510 Bushings, R71-1360 Bearings & 1ea: R253-84 Seal:</i>						
8	R51-0880	51-0880	Bedknife Screw Driver Tool	0	35.65	

All original equipment manufacturers names and part numbers are used for identification purposes only, and we are in no way implying that our products are original equipment parts. Prices subject to change without notice.



Replaces Toro Reelmaster 216 Parts

Cutting Unit
Reel & Bedknife



Item No	R&R Part No.	OEM Part No.	Description	Qty Req	Price Each	Order Quantity
---------	--------------	--------------	-------------	---------	------------	----------------

Other Parts Available

10	R57-5270	57-5270	Spring - Adjusting Handle	1	6.80	
11	R3296-62	3296-62	Locknut - 1/2-20 LH Jam	1	1.25	
12	R57-5260	107-7409, 57-5260	Pivot - 1/2-20 - Bed Bar	1	15.75	
13	R52-2890	52-2890	Bushing - Flanged	2	0.77	
14	R62-5510	52-2870, 62-5510	Bushing	2	4.35	
15	R302-18	302-18	Zerk - Grease Press Style	1	0.47	
16	R71-1360	251-219, 251-253, 251-254, 251-320, 71-1360, 88-7880, 94-3405	Bearing	2	19.20	
28	R150475	3-6462, 3-6642	Screw - Bedknife Stainless 5/16-18 x 5/8	10	0.52	
<i>Tech Note: Pre-Packaged in bags of 50:</i>						
28	R150476	3-3816, 3-6462, 52-4910, 57-4910	Screw - Bedknife 5/16-18 x 5/8	10	0.29	
39	R61-1070	61-1070	Handle - Bed Bar Adjustment	1	55.80	
44	R56-9510	56-9510	Bushing - Rubber For Bed Bar / RI	6	5.45	
45	R56-9520	56-9520	Bushing - Nyliner	6	1.55	
46	R61-1210	61-1210, 61-1210-01	Backing Bar - Bed Knife	1	216.25	
47	R52-2980	52-2980	Housing - Pivot Spa	1	45.75	

All original equipment manufacturers names and part numbers are used for identification purposes only, and we are in no way implying that our products are original equipment parts. Prices subject to change without notice.



Replaces Toro Reelmaster 216 Parts

Cutting Unit
Reel & Bedknife



Item No	R&R Part No.	OEM Part No.	Description	Qty Req	Price Each	Order Quantity
50	R61-3000	61-3000	Shaft - Pivot Cutting Unit	3	42.85	
51	R93-8849	61-1130, 93-8817, 93-8849	Shield - Rear Grass Fits 27 in Units	1	59.25	
52	R61-0560	61-0560	Shield - Top	1	26.95	
53	R443818	01-191-0813, 3218-18, 3218-5, 3248-18	Nut - 1/2-13 Hex Jam Zinc	2	0.35	
54	R57-5190	32110-19, 57-5190	Screw - Adjusting	2	1.95	
55	R61-3280	61-3280	Cover - Rubber Side	2	3.40	
56	R61-3290	61-3290	Cover - Rubber Center	2	6.75	
57	R3295-48	3295-48	Rivet - 3/16 x 3/8 Tub	8	0.35	
58	R61-0430	61-0430, 61-0430-01	Bracket - Long - Rear Roller	2	37.05	
59	R61-0440	61-0440	Bracket - Short - Front Roller	2	39.45	
60	R61-0910	61-0910	Bracket	4	6.20	
61	R3296-39	32127-25, 32128-36, 3290-357, 3296-17, 3296-22, 3296-39, 915663P, 99-7443	Locknut - 3/8-16 Nylon	16	1.40	
62	R3231-2	01-157-0170, 01-173-0608, 3231-2, 3231-22, 3231-28, 900063P	Bolt - Carriage 3/8-16 x 1	4	0.54	

All original equipment manufacturers names and part numbers are used for identification purposes only, and we are in no way implying that our products are original equipment parts. Prices subject to change without notice.



Replaces Toro Reelmaster 216 Parts

Cutting Unit
Reel & Bedknife



Item No	R&R Part No.	OEM Part No.	Description	Qty Req	Price Each	Order Quantity
63	R61-0790	323-57, 61-0790	Bolt - Roller Adjustment	4	3.55	
64	R61-0420	61-0420, 61-0420-01	Support - HOC	4	17.40	
65	R61-3380	61-3380	Belt - V Reel	3	25.15	
66	R52-3000	52-3000	Arm - Spring	1	10.70	
67	R302-5	21-6010, 302-11, 302-37, 302-47, 302-5, 302-57, 302-58, 302-6, 31-0300, 32-9660, 60-0800, 62-3880, 92-4181	Fitting - Grease	1	0.27	
68	R52-2990	324-25, 52-2990	Bolt - Spring Retainer	1	4.65	
69	R187-0	3256-25, 7-0032	Washer - Flat 7/16 SAE	1	0.22	
70	R61-1950	61-1950	Washer - Nylon - Bed Bar	1	0.64	
72	R61-1010	61-1010	Housing - Bed Bar	1	19.40	
72	R14-4459	14-4459	Housing - w/Bushing For Bed Bar	1	22.20	
73	R62-7120	62-7120	Washer	1	0.80	
74	R3256-56	3256-56, 60-4750	Washer	1	0.39	

All original equipment manufacturers names and part numbers are used for identification purposes only, and we are in no way implying that our products are original equipment parts. Prices subject to change without notice.



Replaces Toro Reelmaster 216 Parts

Cutting Unit
Reel & Bedknife



Item No	R&R Part No.	OEM Part No.	Description	Qty Req	Price Each	Order Quantity
75	R3253-4	01-166-0110, 01-166-0510, 23-10-GD, 24-7170, 30-8520, 3253-4, 42-9850, 48-9350, 48-9360, 48-9570, 68-9420, 99-7577	Washer - Lock 5/16 Zinc	1	0.14	
76	R322-3	01-150-1420, 01-178-0506, 20-24-AD, 20-24-AGD, 322-3, 48-9270, 513339, 908017P	Bolt - Hex HD 5/16-18 x 3/4	1	0.62	
77	R253-84	253-84, 7-0044	Seal - Micro Adj.	1	3.85	
78	R257-5	257-5	Washer - Thrust	4	1.85	
79	R257-6	257-6	Bearing - Thrust	2	2.45	

All original equipment manufacturers names and part numbers are used for identification purposes only, and we are in no way implying that our products are original equipment parts. Prices subject to change without notice.