

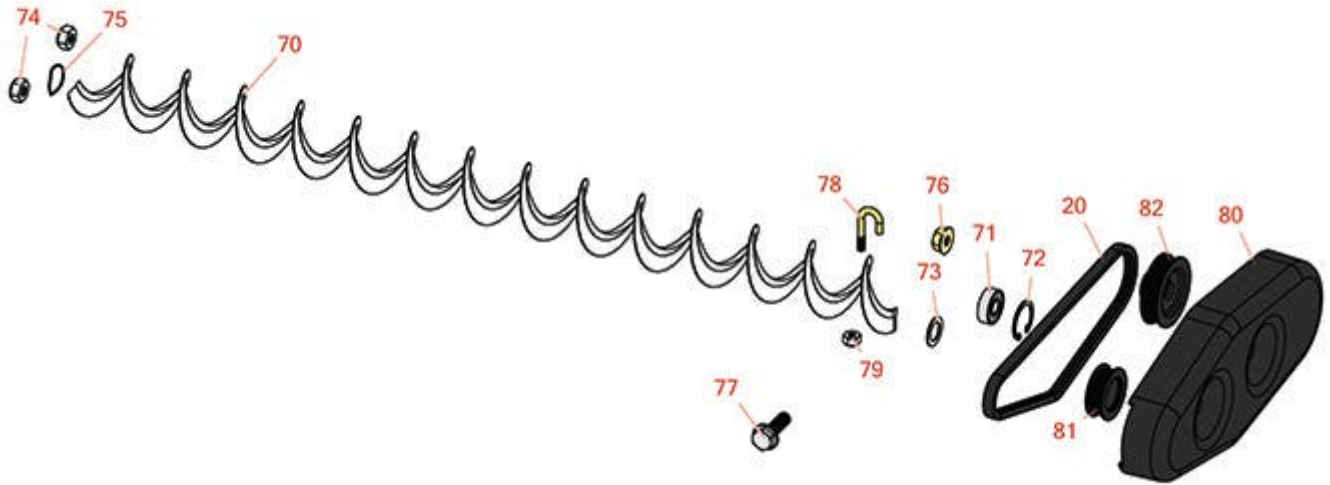


# Replaces Toro Greensmaster eTriFlex

## 3360 Parts

DPA Cutting Unit - Models 04651, 04653 & 04655

Rear Roller Brush



All original equipment manufacturers names and part numbers are used for identification purposes only, and we are in no way implying that our products are original equipment parts. Prices subject to change without notice.



# Replaces Toro Greensmaster eTriFlex 3360 Parts

DPA Cutting Unit - Models 04651, 04653 & 04655  
Rear Roller Brush



Item No	R&R Part No.	OEM Part No.	Description	Qty Req	Price Each	Order Quantity
<b>Belts</b>						
20	<b>R105-5720</b>	105-5720	Belt - Poly V	1	<b>8.20</b>	
<b>Other Parts Available</b>						
70	<b>R105-6792</b>	104-1829, 105-6792	Brush - Rear Roller	1	<b>50.20</b>	
71	<b>R251-259</b>	251-259, 251-307	Bearing - Ball	1	<b>11.25</b>	
72	<b>R104-4727</b>	104-4727	Ring - Retaining	1	<b>0.81</b>	
73	<b>R112-6957</b>	112-6957	Washer - Hardened	2	<b>1.25</b>	
74	<b>R301504</b>	2296-42, 301504, 32127-24, 32128-33, 32146-17, 3296-16, 3296-42, 3296-42, 915661P	Locknut - ESNA 1/4-20	2	<b>0.18</b>	
75	<b>R115-7143</b>	115-7143	Spring - Wave	2	<b>4.95</b>	
76	<b>R104-8300</b>	104-8300, 104-8300, 119-4041	Locknut - 5/16-18 Flanged Y/Zinc	5	<b>0.47</b>	
77	<b>R3234-29</b>	3234-17, 3234-29	Bolt - 5/16-18x1 Serr Hex	1	<b>1.65</b>	
78	<b>R104-1830</b>	104-1830	Bolt - J	2	<b>4.60</b>	
79	<b>R3296-2</b>	32127-10, 3296-2, 9157404	Nut - #10 Lock	2	<b>0.94</b>	
80	<b>R105-5719</b>	105-5719	Cover - Rear Brush	1	<b>49.95</b>	

All original equipment manufacturers names and part numbers are used for identification purposes only, and we are in no way implying that our products are original equipment parts. Prices subject to change without notice.



# Replaces Toro Greensmaster eTriFlex 3360 Parts



*DPA Cutting Unit - Models 04651, 04653 & 04655  
Rear Roller Brush*

Item No	R&R Part No.	OEM Part No.	Description	Qty Req	Price Each	Order Quantity
81	<b>R104-1834</b>	104-1820, 104-1834	Idler Bearing - Assy	1	<b>51.15</b>	
82	<b>R106-6917</b>	106-6917	Pulley - Driven	1	<b>34.45</b>	

All original equipment manufacturers names and part numbers are used for identification purposes only, and we are in no way implying that our products are original equipment parts. Prices subject to change without notice.