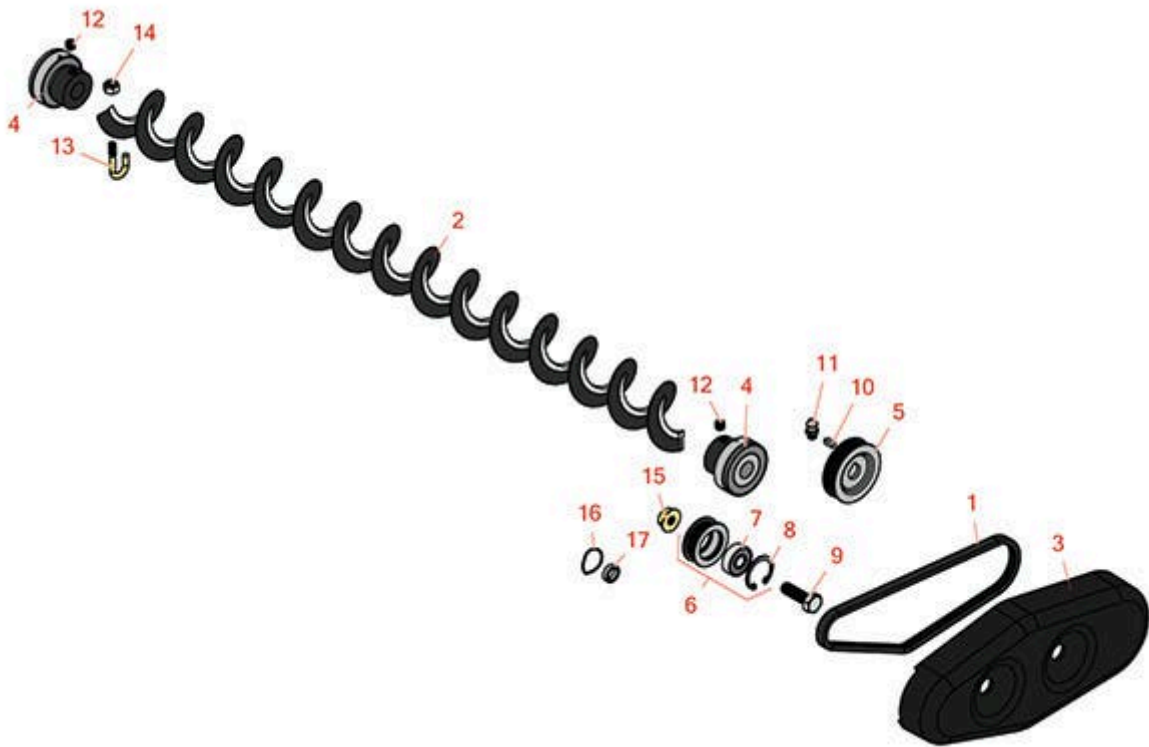




Replaces Toro Greensmaster 3120 Parts

DPA Cutting Unit - Models 04652, 04654 & 04656

Rear Roller Brush



All original equipment manufacturers names and part numbers are used for identification purposes only, and we are in no way implying that our products are original equipment parts. Prices subject to change without notice.



Replaces Toro Greensmaster 3120 Parts

DPA Cutting Unit - Models 04652, 04654 & 04656

Rear Roller Brush



Item No	R&R Part No.	OEM Part No.	Description	Qty Req	Price Each	Order Quantity
Belts						
1	R105-5720	105-5720	Belt - Poly V	1	8.20	
Other Parts Available						
2	R105-6792	104-1829, 105-6792	Brush - Rear Roller	1	50.20	
3	R105-5719	105-5719	Cover - Rear Brush	1	49.95	
4	R104-1842	104-1842	Bearing - Roller	2	28.25	
5	R106-6917	106-6917	Pulley - Driven	1	34.45	
6	R104-1834	104-1820, 104-1834	Idler Bearing - Assy	1	51.15	
7	R251-259	251-259, 251-307	Bearing - Ball	1	11.25	
8	R104-4727	104-4727	Ring - Retaining	1	0.81	
9	R322-5	01-178-0508, 20-26-AD, 20-26-AGD, 30-9000, 322-5, 513341, 519755, 908019P, N/A	Bolt - Hex HD 5/16-18 x 1	1	0.40	
10	R95-9619	95-9619	Key - Square 1/8 x 1/8 x 5/16	1	0.91	

All original equipment manufacturers names and part numbers are used for identification purposes only, and we are in no way implying that our products are original equipment parts. Prices subject to change without notice.



Replaces Toro Greensmaster 3120 Parts

DPA Cutting Unit - Models 04652, 04654 & 04656
Rear Roller Brush



Item No	R&R Part No.	OEM Part No.	Description	Qty Req	Price Each	Order Quantity
11	R302-5	21-6010, 302-11, 302-37, 302-47, 302-5, 302-57, 302-58, 302-6, 31-0300, 32-9660, 60-0800, 62-3880, 92-4181	Fitting - Grease	2	0.27	
12	R3245-1	244-19, 32104-67, 3245-1	Screw - Set 1/4-20 x 1/4	2	1.10	
13	R104-1830	104-1830	Bolt - J	2	4.60	
14	R3296-2	32127-10, 3296-2, 9157404	Nut - #10 Lock	2	0.94	
15	R104-8300	104-8300, 104-8300, 119-4041	Locknut - 5/16-18 Flanged Y/Zinc	5	0.47	
16	R115-7143	115-7143	Spring - Wave	1	4.95	
17	R82-4240	82-4240	Spacer - Bearing	2	3.25	

All original equipment manufacturers names and part numbers are used for identification purposes only, and we are in no way implying that our products are original equipment parts. Prices subject to change without notice.