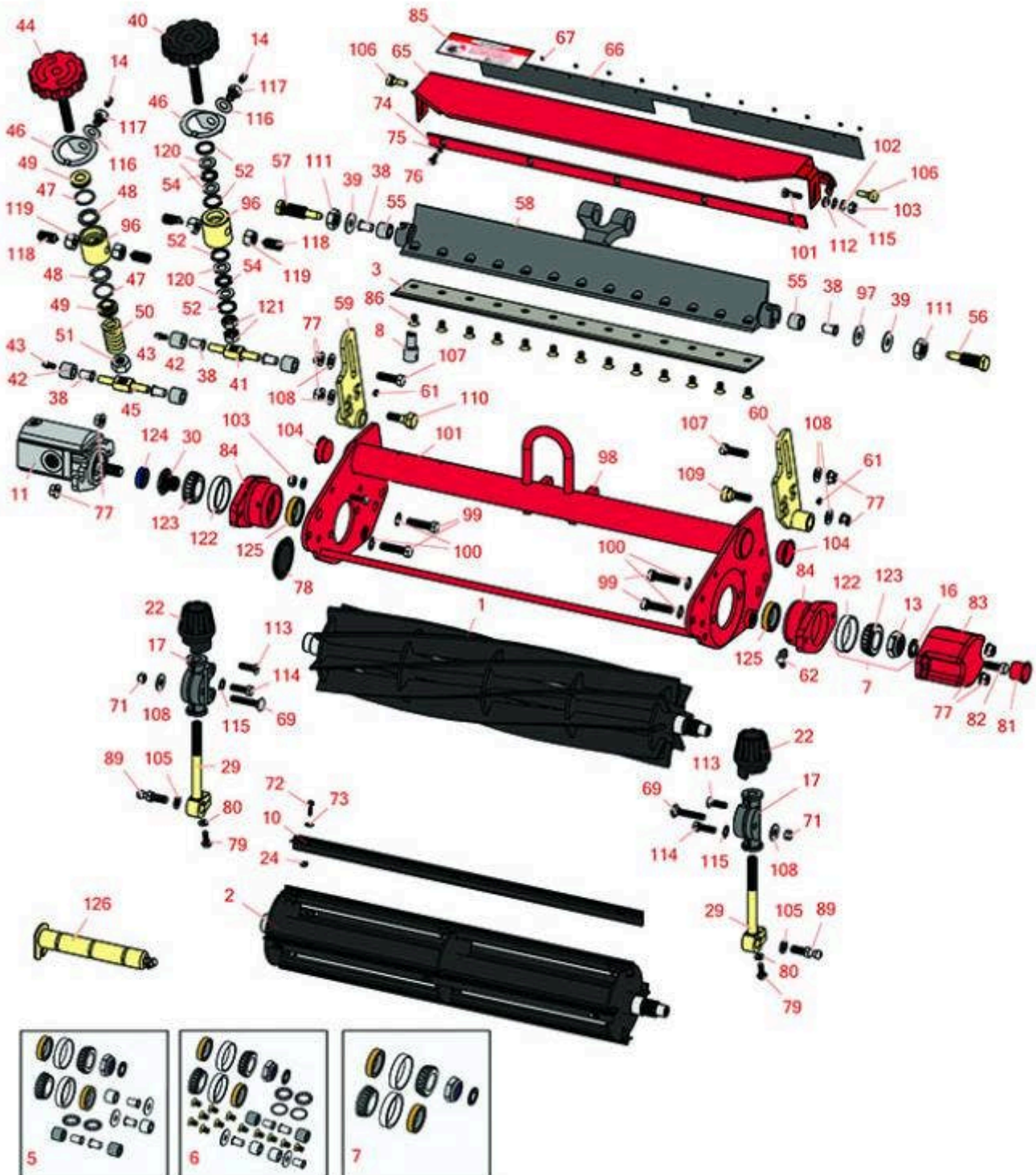




Replaces Toro Greensmaster 3000 Parts

SPA Cutting Unit - Models 04445, 04448 & 04450
Reel & Bedknife



All original equipment manufacturers names and part numbers are used for identification purposes only, and we are in no way implying that our products are original equipment parts. Prices subject to change without notice.



Replaces Toro Greensmaster 3000 Parts

SPA Cutting Unit - Models 04445, 04448 & 04450
Reel & Bedknife



Item No	R&R Part No.	OEM Part No.	Description	Qty Req	Price Each	Order Quantity
R&R Reels, Lifetime Guaranteed						
1	R150760		Reel - 14 Blade	1	433.55	
1	R12-2789	12-2789, 130-6470	Reel - 11 Blade	1	284.55	
1	R5-3195	5-3195	Reel - 9 Blade	1	262.20	
1	R5-3189	12-3599, 130-6469, 5-3189	Reel - 8 Blade	1	264.70	
1	R5-3189H		Reel - 8 Blade Heavy Duty	1	253.70	
1	R5-3206	5-3206	Reel - 6 Blade	1	241.95	
1	R5-3205	12-0729, 12-8779, 5-3205	Reel - 5 Blade	1	236.65	
1	R5-3215	5-3215	Reel - 5 Blade Heavy Duty	1	241.70	
1	R5-3200	5-3200	Reel - 4 Blade	1	230.95	
1	R14-0659	14-0659, 57-5300	Reel - 5 Blade Heavy Duty	0	268.25	
2	R150480		Brush Reel	1	203.80	
R&R Bedknives, Lifetime Guaranteed						
3	R150466	63-8600, 64-6393, 94-6393	Bedknife - Super Thick .312 - 1.00 HOC	1	39.70	
3	R150462	63-8610, 94-6396	Bedknife - 7 Hole Thick 5/16	1	39.70	
3	R94-6396	10-4900, 54-9150, 94-6396, Oct-00	Bedknife - High Cut 5/16"-1" HOC	1	40.80	

All original equipment manufacturers names and part numbers are used for identification purposes only, and we are in no way implying that our products are original equipment parts. Prices subject to change without notice.



Replaces Toro Greensmaster 3000 Parts

SPA Cutting Unit - Models 04445, 04448 & 04450
Reel & Bedknife



Item No	R&R Part No.	OEM Part No.	Description	Qty Req	Price Each	Order Quantity
3	R63-8610	63-8610	Bedknife - Fairway Cut .375 - 1.00 HOC	1	39.50	
3	R94-6392	62-2500, 94-6392	Bedknife - High Cut .312 - 1.00 HOC	1	39.25	
3	R93-4264	57-4960, 63-8470, 93-4264	Bedknife - Low Cut .187 - 1.00 HOC	1	38.10	
3	R93-4263	63-8560, 66-9320, 93-4263, 93-6039	Bedknife - Tournament Cut .125 - .500 HOC	1	39.75	
3	R94-6394	51-2610, 63-8550, 94-6394	Bedknife - Tournament 1/8-1/2 HOC	1	38.10	
3	R94-6395	17-7040, 19-8880, 62-2510, 63-8500, 94-6395	Bedknife - Low Cut 3/16"-1" HOC	1	38.10	
3	R93-4262	65-8250, 93-4262, 93-4263	Bedknife - Micro Cut .062 - .187 HOC	1	36.50	

R&R Razor Tool Steel Bedknives, Lifetime Guaranteed

2	R115-1881	115-1881	Bedknife - Razor Tool Steel - 21 Tournament Cut .125 - .500 HOC	1	79.15	
---	------------------	----------	---	---	--------------	--

Tech Note: Razor Tool Steel Bedknives are constructed from high grade tool steel for extended life and optimum cut.:

2	R115-1880	115-1880	Bedknife - Razor Tool Steel - 21 Micro Cut .062 - .187 HOC	1	79.90	
---	------------------	----------	--	---	--------------	--

Tech Note: Razor Tool Steel Bedknives are constructed from high grade tool steel for extended life and optimum cut.:

Overhaul Kits & Service Tools

All original equipment manufacturers names and part numbers are used for identification purposes only, and we are in no way implying that our products are original equipment parts. Prices subject to change without notice.



Replaces Toro Greensmaster 3000 Parts

SPA Cutting Unit - Models 04445, 04448 & 04450
Reel & Bedknife



Item No	R&R Part No.	OEM Part No.	Description	Qty Req	Price Each	Order Quantity
5	R255-310	255-310	Overhaul Kit - Cutting Unit	0	69.20	
<i>Tech Note: Includes 4 ea: R52-2890 Bushings; 2 ea: R237-77 O-Rings, R253-96 Seals, R254-72 Cups, R254-94 Bearings, R52-2900 Washers, R57-5280 Bearings, R62-5510 Bushings, R63-9510 Bushings; 1 ea: R253-61 Seal & R32127-46 Locknut:</i>						
6	R13-3659	13-3659	Overhaul Kit - Cutting Unit	0	61.85	
<i>Tech Note: Includes 13 ea.:R150477 Screws; 4 ea.: R52-2890 Bushings; 2 ea.: R237-77 O-rings, R253-96 Seals, R254-72 Bearing Cups, R254-94 Bearings, R52-2900 Washers, R57-5280 Bearings, R62-5510 Bushings, R63-9510 Bushings; 1 ea.: R253-61 Seal & R32127-46 Locknut:</i>						
7	R107-1590	107-1590	Overhaul Kit - Cutting Unit	0	36.10	
<i>Tech Note: Includes 2 ea.: R253-96 Seals, R254-72 Bearing Cups, R254-94 Bearings; 1 ea.: R253-61 Seal & R32127-46 Locknut:</i>						
8	R51-0880	51-0880	Bedknife Screw Driver Tool	0	35.65	
Other Parts Available						
10	R150481		Brush Assy - Brush Reel	4	33.50	
11	R120-2072	100-6426, 108-6487, 112-9200, 120-2072, 93-1375	Hydraulic Gear Motor	1	360.90	
<i>Tech Note: Fits Models 3150 & 3250-D:</i>						
11	R105-9770	10-5090, 105-9770, 26-5690, 70-9800, 94-3506, 94-3507	Hydraulic Motor - Reel Quick Release	1	383.95	
<i>Tech Note: Fits Models 3000, 3050 & 3100:</i>						
13	R32127-46	32127-46, 3296-60	Locknut	1	2.85	

All original equipment manufacturers names and part numbers are used for identification purposes only, and we are in no way implying that our products are original equipment parts. Prices subject to change without notice.



Replaces Toro Greensmaster 3000 Parts

SPA Cutting Unit - Models 04445, 04448 & 04450
Reel & Bedknife



Item No	R&R Part No.	OEM Part No.	Description	Qty Req	Price Each	Order Quantity
14	R302-5	21-6010, 302-11, 302-37, 302-47, 302-5, 302-57, 302-58, 302-6, 31-0300, 32-9660, 60-0800, 62-3880, 92-4181	Fitting - Grease	6	0.27	
16	R253-61	253-61	Seal - Oil Reel	1	4.20	
17	R10-5060	10-5060	Bracket - Roller Adj	2	22.25	
22	R65-8600	10-5040, 65-8600	Knob - Height Adjusting	2	19.90	
24	R3296-9	32127-17, 3296-9	Locknut - Comb	12	0.34	
29	R10-5010	10-5010	Screw - Roller Adjustment	2	24.65	
30	R10-5100	10-5100	Nut - Splined 1-1/8 Long	1	15.70	
30	R93-1394	93-1394	Nut - Splined RH Thrd .812 Long	1	12.25	
38	R52-2890	52-2890	Bushing - Flanged	4	0.77	
39	R52-2900	52-2900	Washer - Nylon	2	0.57	
40	R52-2940	52-2940	Handle Assy	1	39.55	
41	R52-2920	52-2920	Pivot - Bed Bar	1	15.10	
42	R62-5510	52-2870, 62-5510	Bushing	4	4.35	
43	R302-18	302-18	Zerk - Grease Press Style	2	0.47	

All original equipment manufacturers names and part numbers are used for identification purposes only, and we are in no way implying that our products are original equipment parts. Prices subject to change without notice.



Replaces Toro Greensmaster 3000 Parts

SPA Cutting Unit - Models 04445, 04448 & 04450
Reel & Bedknife



Item No	R&R Part No.	OEM Part No.	Description	Qty Req	Price Each	Order Quantity
44	R57-4870	57-4870	Handle - Adjusting Fits GM3M	1	40.25	
44	R77-0330	77-0330	Housing - Pivot Spa	1	42.35	
45	R57-5260	107-7409, 57-5260	Pivot - 1/2-20 - Bed Bar	1	15.75	
46	R52-3000	52-3000	Arm - Spring	1	10.70	
47	R237-77	237-77	O-Ring	2	0.77	
48	R57-5280	57-5280	Bearing - Adjusting Handle	2	1.75	
49	R57-5290	57-5290	Support - Thrust Bearing Fits 3M	2	9.20	
50	R57-5270	57-5270	Spring - Adjusting Handle	1	6.80	
51	R3296-62	3296-62	Locknut - 1/2-20 LH Jam	1	1.25	
52	R253-84	253-84, 7-0044	Seal - Micro Adj.	1	3.85	
54	R257-6	257-6	Bearing - Thrust	2	2.45	
55	R63-9510	63-9480, 63-9510	Bushing - Rubber For Bed Bar	2	4.60	
56	R52-2910	52-2910	Bolt - Eccentric Bed Bar	1	10.70	
57	R52-2930	52-2930	Bolt - Bed Bar	1	8.95	
58	R57-4940	52-2780, 57-4940, 57-4940-01	Bed Bar - 13 Hole	1	164.70	
59	R52-3060	52-3060, 77-1060, 99-5653	Bracket - RH Rear Roller	1	26.05	
60	R52-3090	52-3090, 77-1080, 99-5654	Bracket - LH Rear Roller	1	26.05	

All original equipment manufacturers names and part numbers are used for identification purposes only, and we are in no way implying that our products are original equipment parts. Prices subject to change without notice.



Replaces Toro Greensmaster 3000 Parts

SPA Cutting Unit - Models 04445, 04448 & 04450
Reel & Bedknife



Item No	R&R Part No.	OEM Part No.	Description	Qty Req	Price Each	Order Quantity
61	R3290-125	3290-125	Screw - Set 1/4-20 x 5/16	2	0.83	
62	R302-40	302-13, 302-40	Fitting - Grease	1	0.82	
65	R57-5200	57-5200	Shield - Grass	1	52.75	
66	R57-5210	57-5210	Deflector - Styrene	1	4.55	
67	R3295-46	3295-46	Tube - Rivet Smi Grass Shield	13	0.11	
69	R441674	01-173-0514, 01-173-0516, 3-7253, 3230-5	Screw - 5/16-18 x 1-3/4 Carriage	2	0.70	
71	R32153-3	119-4038, 22-12-AJFD, 32127-35, 32146-5, 32153-3, 3296-18, 3296-29, 3296-31, N/A	Locknut - 5/16-18 ESNA Zinc	2	0.62	
72	R150425		Bolt - Hex HD 8-32 x 5/8	12	0.23	
73	R150426	3256-21	Washer - 8 SAE	12	0.23	
74	R36-7260	36-7260	Bar - Cut Off Grass Shield	1	10.35	
75	R3256-14	24-7-BD, 32125-2, 3256-14, 3256-51, 51-2170	Washer - 10 Flat	5	0.34	
76	R3290-237	3290-237	Screw - Hx Washer HD 10-24	5	0.44	

All original equipment manufacturers names and part numbers are used for identification purposes only, and we are in no way implying that our products are original equipment parts. Prices subject to change without notice.



Replaces Toro Greensmaster 3000 Parts

SPA Cutting Unit - Models 04445, 04448 & 04450
Reel & Bedknife



Item No	R&R Part No.	OEM Part No.	Description	Qty Req	Price Each	Order Quantity
77	R3296-39	32127-25, 32128-36, 3290-357, 3296-17, 3296-22, 3296-39, 915663P, 99-7443	Locknut - 3/8-16 Nylon	8	1.40	
78	R150485	2410-30, 2410-30OSS	Cap - Protective Bearing Housing	1	0.70	
79	R321-4	01-150-1030, 01-178-0406, 20-3-AGD, 321-4, 3222-1	Bolt - Hex HD 1/4-20 x 3/4	4	0.52	
80	R3253-3	01-166-0070, 01-166-0410, 23-9-GD, 24-7150, 3253-3, 3256-1, 352-167	Washer - Lock 1/4	4	0.11	
81	R12-0460	12-0460	Caplug - End Cap	1	0.98	
82	R323-2	01-178-0604, 323-2	Bolt - Hex HD 3/8-16 x 1	1	0.44	
83	R10-5080	10-5080, 10-5080-01	End - Cap Reel Brg Housing	1	47.10	
84	R10-5120	10-5120	Housing - Bearing Reel	2	46.35	
<i>Tech Note: Includes R253-96 & R254-72:</i>						
84	R104-3399	104-3399	Housing Assy - Bearing Reel	2	41.15	
85	R354083	104-7729, 354083	Decal - Danger	1	1.25	
86	R150477	57-4910	Screw - Bedknife 5/16-18 x 1/2	13	0.34	

All original equipment manufacturers names and part numbers are used for identification purposes only, and we are in no way implying that our products are original equipment parts. Prices subject to change without notice.



Replaces Toro Greensmaster 3000 Parts

SPA Cutting Unit - Models 04445, 04448 & 04450
Reel & Bedknife



Item No	R&R Part No.	OEM Part No.	Description	Qty Req	Price Each	Order Quantity
86	R150476	3-3816, 3-6462, 52-4910, 57-4910	Screw - Bedknife 5/16-18 x 5/8	13	0.29	
89	R94-2958	94-2958	Stud - Alloy Ball Joint	2	3.40	
96	R57-5250	57-5250	Housing - Pivot Spa	1	59.05	
96	R52-2980	52-2980	Housing - Pivot Spa	1	45.75	
97	R52-2860	119-4150, 52-2860	Washer - Bed Bar Pivot	1	0.67	
98	R70-1200	70-1200, 70-1200-01	Frame - Single Point Adj.	1	273.60	
99	R3290-316	3290-316, 57-3210	Bolt - Hex Tap 3/8-16 x 1-1/2	4	0.72	
99	R323-53	323-53, 57-3210	Bolt - Hex HD 3/8-16 x 1-3/4	4	1.35	
100	R3255-9	3255-9	Washer - Lock 3/8 Ext. Star	4	0.19	
101	R321-5	321-31, 321-5	Bolt - Hex HD 1/4-20 x 7/8	2	0.29	
102	R3256-22	24-9-BD, 3-1032, 3256-1, 3256-22, 93-0954, 93-0989	Washer - Flat 1/4 Yellow	4	0.12	
103	R301504	2296-42, 301504, 32127-24, 32128-33, 32146-17, 3296-16, 3296-42, 3296-42, 915661P	Locknut - ESNA 1/4-20	2	0.18	

All original equipment manufacturers names and part numbers are used for identification purposes only, and we are in no way implying that our products are original equipment parts. Prices subject to change without notice.



Replaces Toro Greensmaster 3000 Parts

SPA Cutting Unit - Models 04445, 04448 & 04450
Reel & Bedknife



Item No	R&R Part No.	OEM Part No.	Description	Qty Req	Price Each	Order Quantity
104	R285-14	285-14	Plug - Pipe Frame	2	2.35	
105	R3254-6	01-166-0010, 01-166-0280, 01-166-0610, 3253-5, 3254-18, 3254-6, 3290-223, 48-9370	Washer - Lock 3/8	2	0.08	
106	R57-9910	57-9910	Bolt - Pivot	2	2.95	
107	R400264	01-150-0180, 01-178-0610, 20-48-AD, 20-48-AGD, 32-9160, 3224-3, 323-29, 323-7, 400264, 908035P	Bolt - Hex HD 3/8-16 x 1-1/4	2	0.40	

All original equipment manufacturers names and part numbers are used for identification purposes only, and we are in no way implying that our products are original equipment parts. Prices subject to change without notice.



Replaces Toro Greensmaster 3000 Parts

SPA Cutting Unit - Models 04445, 04448 & 04450
Reel & Bedknife



Item No	R&R Part No.	OEM Part No.	Description	Qty Req	Price Each	Order Quantity
108	R453011	01-166-0100, 01-166-0120, 01-166-0270, 01-166-0500, 01-166-0600, 01-166-0620, 132-4593, 2356-3, 237-12, 24-10-AD, 24-11-AD, 24-11-BD, 24-12-AD, 24-12-BD, 30-9310, 32-8190, 3256-24, 3256-3, 3256-36, 3256-4, 453011, 47-9950, 48-9220, 513458, 7-0052	Washer - Flat 3/8 SAE Y/Zinc	4	0.11	
109	R52-3100	52-3100	Bolt - Eccentric Shoulder LH	1	15.30	
110	R52-3110	52-3110	Bolt - Shoulder HOC RH	1	14.70	
111	R443828	01-191-1018, 3214, 3220-6, 443828, 915089P	Nut - 5/8-18 Hex	2	0.62	
112	R237-84	237-84	Grommet - Rubber	2	0.83	
113	R32108-20	32108-20	Screw - Flat HD Cntrsunk	2	0.62	

All original equipment manufacturers names and part numbers are used for identification purposes only, and we are in no way implying that our products are original equipment parts. Prices subject to change without notice.



Replaces Toro Greensmaster 3000 Parts

SPA Cutting Unit - Models 04445, 04448 & 04450
Reel & Bedknife



Item No	R&R Part No.	OEM Part No.	Description	Qty Req	Price Each	Order Quantity
114	R322-5	01-178-0508, 20-26-AD, 20-26-AGD, 30-9000, 322-5, 513341, 519755, 908019P, N/A	Bolt - Hex HD 5/16-18 x 1	2	0.40	
115	R3255-8	3255-8	Washer - Lock 5/16 Ext	2	0.08	
116	R187-0	3256-25, 7-0032	Washer - Flat 7/16 SAE	1	0.22	
117	R52-2990	324-25, 52-2990	Bolt - Spring Retainer	1	4.65	
118	R57-5190	32110-19, 57-5190	Screw - Adjusting	2	1.95	
119	R443818	01-191-0813, 3218-18, 3218-5, 3248-18	Nut - 1/2-13 Hex Jam Zinc	2	0.35	
120	R29-8870	29-8870	Washer - Adj. Handle	1	0.46	
121	R52-3010	52-3010	Nut - 1/2-28 LH Jam	2	2.45	
122	R254-72	01-103-0050, 01-103-0120, 01-103-0140, 1-543508, 254-71, 254-72, 40439, 62-3340, 99-4511	Cup - Bearing	2	3.85	

All original equipment manufacturers names and part numbers are used for identification purposes only, and we are in no way implying that our products are original equipment parts. Prices subject to change without notice.



Replaces Toro Greensmaster 3000 Parts

SPA Cutting Unit - Models 04445, 04448 & 04450
Reel & Bedknife



Item No	R&R Part No.	OEM Part No.	Description	Qty Req	Price Each	Order Quantity
123	R254-94	1-543509, 254-94, 32-8090, 32-8240, 32-9640, 40440, 62-3330	Tapered Bearing Cone	2	7.15	
124	R353-585	353-585, 353-587, 354-34, 72-4380, 75-1210, 75-1270, 92-8863, 92-8864	Seal - High Pressure - Reel Motor	1	19.20	
125	R253-96	253-96	Seal - Oil Single Lip Reel	2	5.15	
126	R114-4683	114-4683	Pin - Hinge 6-1/4 Long	0	36.55	

All original equipment manufacturers names and part numbers are used for identification purposes only, and we are in no way implying that our products are original equipment parts. Prices subject to change without notice.