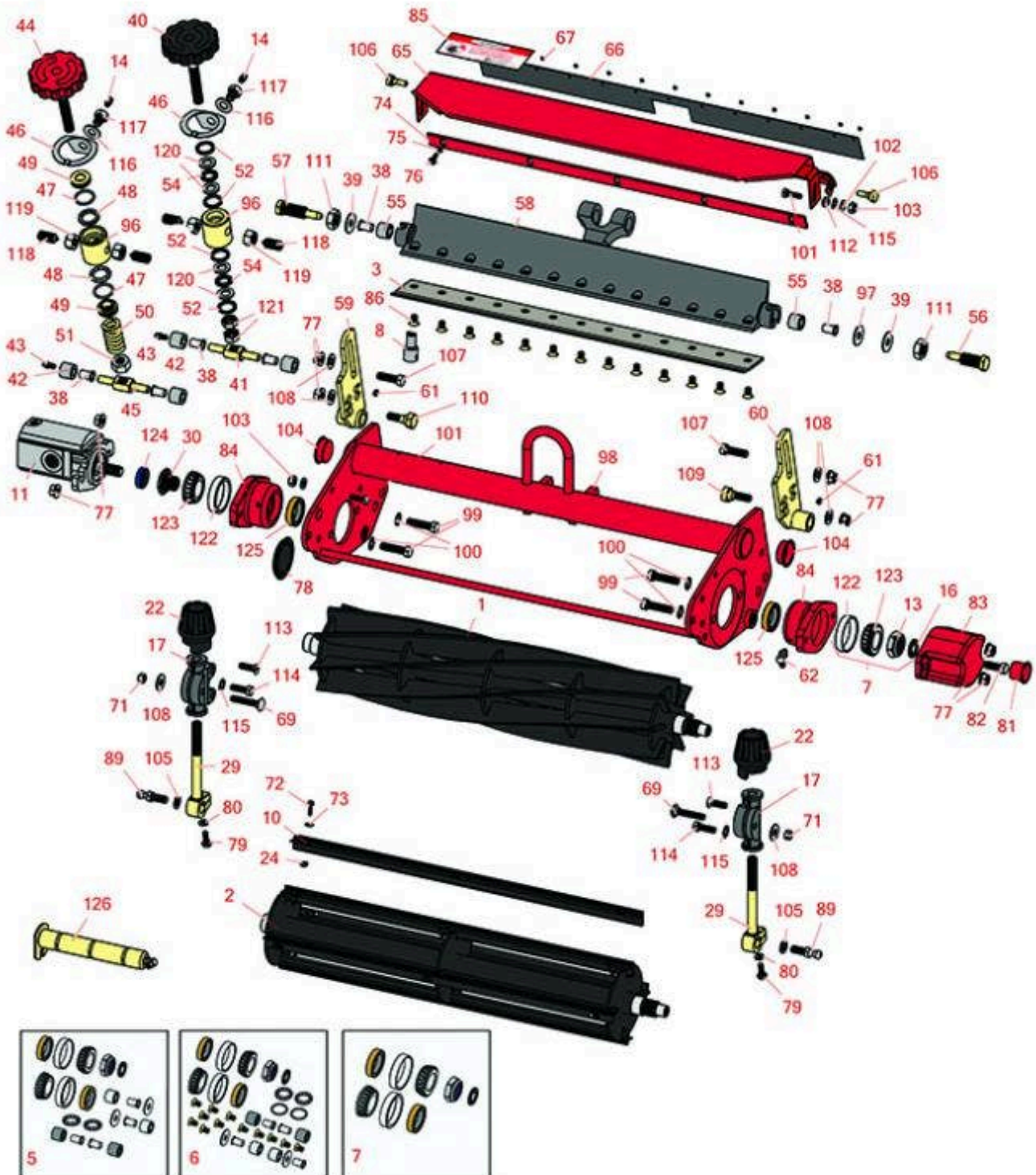




# Replaces Toro Greensmaster 300 Parts

SPA Cutting Unit - Models 04445, 04448 & 04450  
Reel & Bedknife



All original equipment manufacturers names and part numbers are used for identification purposes only, and we are in no way implying that our products are original equipment parts. Prices subject to change without notice.



# Replaces Toro Greensmaster 300 Parts

SPA Cutting Unit - Models 04445, 04448 & 04450  
Reel & Bedknife



| Item No                                       | R&R Part No.    | OEM Part No.                               | Description                               | Qty Req | Price Each    | Order Quantity |
|---|-----------------|--|---|---------|---------------|----------------|
| <b>R&amp;R Reels, Lifetime Guaranteed</b>     |                 |  |   |         |               |                |
| 1   | <b>R150760</b>  |  | Reel - 14 Blade                           | 1       | <b>433.55</b> |                |
| 1   | <b>R12-2789</b> | 12-2789,<br>130-6470                       | Reel - 11 Blade                           | 1       | <b>284.55</b> |                |
| 1   | <b>R5-3195</b>  | 5-3195                                     | Reel - 9 Blade                            | 1       | <b>262.20</b> |                |
| 1   | <b>R5-3189</b>  | 12-3599,<br>130-6469,<br>5-3189            | Reel - 8 Blade                            | 1       | <b>264.70</b> |                |
| 1   | <b>R5-3189H</b> |  | Reel - 8 Blade Heavy Duty                 | 1       | <b>253.70</b> |                |
| 1   | <b>R5-3206</b>  | 5-3206                                     | Reel - 6 Blade                            | 1       | <b>241.95</b> |                |
| 1   | <b>R5-3205</b>  | 12-0729,<br>12-8779,<br>5-3205             | Reel - 5 Blade                            | 1       | <b>236.65</b> |                |
| 1   | <b>R5-3215</b>  | 5-3215                                     | Reel - 5 Blade Heavy Duty                 | 1       | <b>241.70</b> |                |
| 1   | <b>R5-3200</b>  | 5-3200                                     | Reel - 4 Blade                            | 1       | <b>230.95</b> |                |
| 1   | <b>R14-0659</b> | 14-0659,<br>57-5300                        | Reel - 5 Blade Heavy Duty                 | 0       | <b>268.25</b> |                |
| 2   | <b>R150480</b>  |  | Brush Reel                                | 1       | <b>203.80</b> |                |
| <b>R&amp;R Bedknives, Lifetime Guaranteed</b> |                 |  |   |         |               |                |
| 3   | <b>R150466</b>  | 63-8600,<br>64-6393,<br>94-6393            | Bedknife - Super Thick .312 -<br>1.00 HOC | 1       | <b>39.70</b>  |                |
| 3   | <b>R150462</b>  | 63-8610,<br>94-6396                        | Bedknife - 7 Hole Thick 5/16              | 1       | <b>39.70</b>  |                |
| 3   | <b>R94-6396</b> | 10-4900,<br>54-9150,<br>94-6396,<br>Oct-00 | Bedknife - High Cut 5/16"-1"<br>HOC       | 1       | <b>40.80</b>  |                |

All original equipment manufacturers names and part numbers are used for identification purposes only, and we are in no way implying that our products are original equipment parts. Prices subject to change without notice.



# Replaces Toro Greensmaster 300 Parts

SPA Cutting Unit - Models 04445, 04448 & 04450  
Reel & Bedknife



| Item No | R&R Part No.    | OEM Part No.  | Description                               | Qty Req | Price Each   | Order Quantity |
|---------|-----------------|---|---|---------|--------------|----------------|
| 3       | <b>R63-8610</b> | 63-8610   | Bedknife - Fairway Cut .375 - 1.00 HOC    | 1       | <b>39.50</b> |                |
| 3       | <b>R94-6392</b> | 62-2500,<br>94-6392                                     | Bedknife - High Cut .312 - 1.00 HOC       | 1       | <b>39.25</b> |                |
| 3       | <b>R93-4264</b> | 57-4960,<br>63-8470,<br>93-4264                         | Bedknife - Low Cut .187 - 1.00 HOC        | 1       | <b>38.10</b> |                |
| 3       | <b>R93-4263</b> | 63-8560,<br>66-9320,<br>93-4263,<br>93-6039             | Bedknife - Tournament Cut .125 - .500 HOC | 1       | <b>39.75</b> |                |
| 3       | <b>R94-6394</b> | 51-2610,<br>63-8550,<br>94-6394                         | Bedknife - Tournament 1/8-1/2 HOC         | 1       | <b>38.10</b> |                |
| 3       | <b>R94-6395</b> | 17-7040,<br>19-8880,<br>62-2510,<br>63-8500,<br>94-6395 | Bedknife - Low Cut 3/16"-1" HOC           | 1       | <b>38.10</b> |                |
| 3       | <b>R93-4262</b> | 65-8250,<br>93-4262,<br>93-4263                         | Bedknife - Micro Cut .062 - .187 HOC      | 1       | <b>36.50</b> |                |

## **R&R Razor Tool Steel Bedknives, Lifetime Guaranteed**

|   |                  |          |   |   |              |  |
|---|------------------|----------|---|---|--------------|--|
| 2 | <b>R115-1881</b> | 115-1881 | Bedknife - Razor Tool Steel - 21 Tournament Cut .125 - .500 HOC | 1 | <b>79.15</b> |  |
|---|------------------|----------|---|---|--------------|--|

*Tech Note: Razor Tool Steel Bedknives are constructed from high grade tool steel for extended life and optimum cut.:*

|   |                  |          |  |   |              |  |
|---|------------------|----------|--|---|--------------|--|
| 2 | <b>R115-1880</b> | 115-1880 | Bedknife - Razor Tool Steel - 21 Micro Cut .062 - .187 HOC | 1 | <b>79.90</b> |  |
|---|------------------|----------|--|---|--------------|--|

*Tech Note: Razor Tool Steel Bedknives are constructed from high grade tool steel for extended life and optimum cut.:*

## **Overhaul Kits & Service Tools**

All original equipment manufacturers names and part numbers are used for identification purposes only, and we are in no way implying that our products are original equipment parts. Prices subject to change without notice.



# Replaces Toro Greensmaster 300 Parts

SPA Cutting Unit - Models 04445, 04448 & 04450  
Reel & Bedknife



| Item No  | R&R Part No.     | OEM Part No.   | Description                          | Qty Req | Price Each    | Order Quantity |
|--|------------------|--|--------------------------------------|---------|---------------|----------------|
| 5  | <b>R255-310</b>  | 255-310  | Overhaul Kit - Cutting Unit          | 0       | <b>69.20</b>  |                |
| <i>Tech Note: Includes 4 ea: R52-2890 Bushings; 2 ea: R237-77 O-Rings, R253-96 Seals, R254-72 Cups, R254-94 Bearings, R52-2900 Washers, R57-5280 Bearings, R62-5510 Bushings, R63-9510 Bushings; 1 ea: R253-61 Seal &amp; R32127-46 Locknut:</i>                                   |                  |  |                                      |         |               |                |
| 6  | <b>R13-3659</b>  | 13-3659  | Overhaul Kit - Cutting Unit          | 0       | <b>61.85</b>  |                |
| <i>Tech Note: Includes 13 ea.:R150477 Screws; 4 ea.: R52-2890 Bushings; 2 ea.: R237-77 O-rings, R253-96 Seals, R254-72 Bearing Cups, R254-94 Bearings, R52-2900 Washers, R57-5280 Bearings, R62-5510 Bushings, R63-9510 Bushings; 1 ea.: R253-61 Seal &amp; R32127-46 Locknut:</i> |                  |  |                                      |         |               |                |
| 7  | <b>R107-1590</b> | 107-1590   | Overhaul Kit - Cutting Unit          | 0       | <b>36.10</b>  |                |
| <i>Tech Note: Includes 2 ea.: R253-96 Seals, R254-72 Bearing Cups, R254-94 Bearings; 1 ea.: R253-61 Seal &amp; R32127-46 Locknut:</i>  |                  |  |                                      |         |               |                |
| 8  | <b>R51-0880</b>  | 51-0880  | Bedknife Screw Driver Tool           | 0       | <b>35.65</b>  |                |
| <b>Other Parts Available</b>   |                  |  |                                      |         |               |                |
| 10   | <b>R150481</b>   |  | Brush Assy - Brush Reel              | 4       | <b>33.50</b>  |                |
| 11   | <b>R120-2072</b> | 100-6426,<br>108-6487,<br>112-9200,<br>120-2072,<br>93-1375          | Hydraulic Gear Motor                 | 1       | <b>360.90</b> |                |
| <i>Tech Note: Fits Models 3150 &amp; 3250-D:</i>   |                  |  |                                      |         |               |                |
| 11   | <b>R105-9770</b> | 10-5090,<br>105-9770,<br>26-5690,<br>70-9800,<br>94-3506,<br>94-3507 | Hydraulic Motor - Reel Quick Release | 1       | <b>383.95</b> |                |
| <i>Tech Note: Fits Models 3000, 3050 &amp; 3100:</i>   |                  |  |                                      |         |               |                |
| 13   | <b>R32127-46</b> | 32127-46,<br>3296-60   | Locknut                              | 1       | <b>2.85</b>   |                |

All original equipment manufacturers names and part numbers are used for identification purposes only, and we are in no way implying that our products are original equipment parts. Prices subject to change without notice.



# Replaces Toro Greensmaster 300 Parts

SPA Cutting Unit - Models 04445, 04448 & 04450  
Reel & Bedknife



| Item No | R&R Part No.    | OEM Part No.   | Description                     | Qty Req | Price Each   | Order Quantity |
|---------|-----------------|--|---------------------------------|---------|--------------|----------------|
| 14      | <b>R302-5</b>   | 21-6010,<br>302-11,<br>302-37,<br>302-47,<br>302-5,<br>302-57,<br>302-58,<br>302-6,<br>31-0300,<br>32-9660,<br>60-0800,<br>62-3880,<br>92-4181 | Fitting - Grease                | 6       | <b>0.27</b>  |                |
| 16      | <b>R253-61</b>  | 253-61   | Seal - Oil Reel                 | 1       | <b>4.20</b>  |                |
| 17      | <b>R10-5060</b> | 10-5060  | Bracket - Roller Adj            | 2       | <b>22.25</b> |                |
| 22      | <b>R65-8600</b> | 10-5040,<br>65-8600  | Knob - Height Adjusting         | 2       | <b>19.90</b> |                |
| 24      | <b>R3296-9</b>  | 32127-17,<br>3296-9  | Locknut - Comb                  | 12      | <b>0.34</b>  |                |
| 29      | <b>R10-5010</b> | 10-5010  | Screw - Roller Adjustment       | 2       | <b>24.65</b> |                |
| 30      | <b>R10-5100</b> | 10-5100  | Nut - Splined 1-1/8 Long        | 1       | <b>15.70</b> |                |
| 30      | <b>R93-1394</b> | 93-1394  | Nut - Splined RH Thrd .812 Long | 1       | <b>12.25</b> |                |
| 38      | <b>R52-2890</b> | 52-2890  | Bushing - Flanged               | 4       | <b>0.77</b>  |                |
| 39      | <b>R52-2900</b> | 52-2900  | Washer - Nylon                  | 2       | <b>0.57</b>  |                |
| 40      | <b>R52-2940</b> | 52-2940  | Handle Assy                     | 1       | <b>39.55</b> |                |
| 41      | <b>R52-2920</b> | 52-2920  | Pivot - Bed Bar                 | 1       | <b>15.10</b> |                |
| 42      | <b>R62-5510</b> | 52-2870,<br>62-5510  | Bushing                         | 4       | <b>4.35</b>  |                |
| 43      | <b>R302-18</b>  | 302-18   | Zerk - Grease Press Style       | 2       | <b>0.47</b>  |                |

All original equipment manufacturers names and part numbers are used for identification purposes only, and we are in no way implying that our products are original equipment parts. Prices subject to change without notice.



## Replaces Toro Greensmaster 300 Parts

SPA Cutting Unit - Models 04445, 04448 & 04450  
Reel & Bedknife



| Item No | R&R Part No.    | OEM Part No.                       | Description                      | Qty Req | Price Each    | Order Quantity |
|---------|-----------------|------------------------------------|----------------------------------|---------|---------------|----------------|
| 44      | <b>R57-4870</b> | 57-4870                            | Handle - Adjusting Fits GM3M     | 1       | <b>40.25</b>  |                |
| 44      | <b>R77-0330</b> | 77-0330                            | Housing - Pivot Spa              | 1       | <b>42.35</b>  |                |
| 45      | <b>R57-5260</b> | 107-7409,<br>57-5260               | Pivot - 1/2-20 - Bed Bar         | 1       | <b>15.75</b>  |                |
| 46      | <b>R52-3000</b> | 52-3000                            | Arm - Spring                     | 1       | <b>10.70</b>  |                |
| 47      | <b>R237-77</b>  | 237-77                             | O-Ring                           | 2       | <b>0.77</b>   |                |
| 48      | <b>R57-5280</b> | 57-5280                            | Bearing - Adjusting Handle       | 2       | <b>1.75</b>   |                |
| 49      | <b>R57-5290</b> | 57-5290                            | Support - Thrust Bearing Fits 3M | 2       | <b>9.20</b>   |                |
| 50      | <b>R57-5270</b> | 57-5270                            | Spring - Adjusting Handle        | 1       | <b>6.80</b>   |                |
| 51      | <b>R3296-62</b> | 3296-62                            | Locknut - 1/2-20 LH Jam          | 1       | <b>1.25</b>   |                |
| 52      | <b>R253-84</b>  | 253-84,<br>7-0044                  | Seal - Micro Adj.                | 1       | <b>3.85</b>   |                |
| 54      | <b>R257-6</b>   | 257-6                              | Bearing - Thrust                 | 2       | <b>2.45</b>   |                |
| 55      | <b>R63-9510</b> | 63-9480,<br>63-9510                | Bushing - Rubber For Bed Bar     | 2       | <b>4.60</b>   |                |
| 56      | <b>R52-2910</b> | 52-2910                            | Bolt - Eccentric Bed Bar         | 1       | <b>10.70</b>  |                |
| 57      | <b>R52-2930</b> | 52-2930                            | Bolt - Bed Bar                   | 1       | <b>8.95</b>   |                |
| 58      | <b>R57-4940</b> | 52-2780,<br>57-4940,<br>57-4940-01 | Bed Bar - 13 Hole                | 1       | <b>164.70</b> |                |
| 59      | <b>R52-3060</b> | 52-3060,<br>77-1060,<br>99-5653    | Bracket - RH Rear Roller         | 1       | <b>26.05</b>  |                |
| 60      | <b>R52-3090</b> | 52-3090,<br>77-1080,<br>99-5654    | Bracket - LH Rear Roller         | 1       | <b>26.05</b>  |                |

All original equipment manufacturers names and part numbers are used for identification purposes only, and we are in no way implying that our products are original equipment parts. Prices subject to change without notice.



## Replaces Toro Greensmaster 300 Parts

SPA Cutting Unit - Models 04445, 04448 & 04450  
Reel & Bedknife



| Item No | R&R Part No.     | OEM Part No.   | Description                         | Qty Req | Price Each   | Order Quantity |
|---------|------------------|--|-------------------------------------|---------|--------------|----------------|
| 61      | <b>R3290-125</b> | 3290-125   | Screw - Set 1/4-20 x 5/16           | 2       | <b>0.83</b>  |                |
| 62      | <b>R302-40</b>   | 302-13,<br>302-40  | Fitting - Grease                    | 1       | <b>0.82</b>  |                |
| 65      | <b>R57-5200</b>  | 57-5200  | Shield - Grass                      | 1       | <b>52.75</b> |                |
| 66      | <b>R57-5210</b>  | 57-5210  | Deflector - Styrene                 | 1       | <b>4.55</b>  |                |
| 67      | <b>R3295-46</b>  | 3295-46  | Tube - Rivet Smi Grass Shield       | 13      | <b>0.11</b>  |                |
| 69      | <b>R441674</b>   | 01-173-0514,<br>01-173-0516,<br>3-7253,<br>3230-5  | Screw - 5/16-18 x 1-3/4<br>Carriage | 2       | <b>0.70</b>  |                |
| 71      | <b>R32153-3</b>  | 119-4038,<br>22-12-AJFD,<br>32127-35,<br>32146-5,<br>32153-3,<br>3296-18,<br>3296-29,<br>3296-31,<br>N/A | Locknut - 5/16-18 ESNA Zinc         | 2       | <b>0.62</b>  |                |
| 72      | <b>R150425</b>   |  | Bolt - Hex HD 8-32 x 5/8            | 12      | <b>0.23</b>  |                |
| 73      | <b>R150426</b>   | 3256-21  | Washer - 8 SAE                      | 12      | <b>0.23</b>  |                |
| 74      | <b>R36-7260</b>  | 36-7260  | Bar - Cut Off Grass Shield          | 1       | <b>10.35</b> |                |
| 75      | <b>R3256-14</b>  | 24-7-BD,<br>32125-2,<br>3256-14,<br>3256-51,<br>51-2170  | Washer - 10 Flat                    | 5       | <b>0.34</b>  |                |
| 76      | <b>R3290-237</b> | 3290-237   | Screw - Hx Washer HD 10-24          | 5       | <b>0.44</b>  |                |

All original equipment manufacturers names and part numbers are used for identification purposes only, and we are in no way implying that our products are original equipment parts. Prices subject to change without notice.



# Replaces Toro Greensmaster 300 Parts

SPA Cutting Unit - Models 04445, 04448 & 04450  
Reel & Bedknife



| Item No   | R&R Part No.     | OEM Part No.   | Description                      | Qty Req | Price Each   | Order Quantity |
|---|------------------|--|----------------------------------|---------|--------------|----------------|
| 77  | <b>R3296-39</b>  | 32127-25,<br>32128-36,<br>3290-357,<br>3296-17,<br>3296-22,<br>3296-39,<br>915663P,<br>99-7443 | Locknut - 3/8-16 Nylon           | 8       | <b>1.40</b>  |                |
| 78  | <b>R150485</b>   | 2410-30,<br>2410-30OSS   | Cap - Protective Bearing Housing | 1       | <b>0.70</b>  |                |
| 79  | <b>R321-4</b>    | 01-150-1030,<br>01-178-0406,<br>20-3-AGD,<br>321-4,<br>3222-1                                  | Bolt - Hex HD 1/4-20 x 3/4       | 4       | <b>0.52</b>  |                |
| 80  | <b>R3253-3</b>   | 01-166-0070,<br>01-166-0410,<br>23-9-GD,<br>24-7150,<br>3253-3,<br>3256-1,<br>352-167          | Washer - Lock 1/4                | 4       | <b>0.11</b>  |                |
| 81  | <b>R12-0460</b>  | 12-0460  | Caplug - End Cap                 | 1       | <b>0.98</b>  |                |
| 82  | <b>R323-2</b>    | 01-178-0604,<br>323-2  | Bolt - Hex HD 3/8-16 x 1         | 1       | <b>0.44</b>  |                |
| 83  | <b>R10-5080</b>  | 10-5080,<br>10-5080-01   | End - Cap Reel Brg Housing       | 1       | <b>47.10</b> |                |
| 84  | <b>R10-5120</b>  | 10-5120  | Housing - Bearing Reel           | 2       | <b>46.35</b> |                |
| <i>Tech Note: Includes R253-96 &amp; R254-72:</i> |                  |  |                                  |         |              |                |
| 84  | <b>R104-3399</b> | 104-3399   | Housing Assy - Bearing Reel      | 2       | <b>41.15</b> |                |
| 85  | <b>R354083</b>   | 104-7729,<br>354083  | Decal - Danger                   | 1       | <b>1.25</b>  |                |
| 86  | <b>R150477</b>   | 57-4910  | Screw - Bedknife 5/16-18 x 1/2   | 13      | <b>0.34</b>  |                |

All original equipment manufacturers names and part numbers are used for identification purposes only, and we are in no way implying that our products are original equipment parts. Prices subject to change without notice.





# Replaces Toro Greensmaster 300 Parts

SPA Cutting Unit - Models 04445, 04448 & 04450  
Reel & Bedknife



| Item No | R&R Part No.     | OEM Part No.  | Description                    | Qty Req | Price Each    | Order Quantity |
|---------|------------------|---|--------------------------------|---------|---------------|----------------|
| 86      | <b>R150476</b>   | 3-3816,<br>3-6462,<br>52-4910,<br>57-4910   | Screw - Bedknife 5/16-18 x 5/8 | 13      | <b>0.29</b>   |                |
| 89      | <b>R94-2958</b>  | 94-2958   | Stud - Alloy Ball Joint        | 2       | <b>3.40</b>   |                |
| 96      | <b>R57-5250</b>  | 57-5250   | Housing - Pivot Spa            | 1       | <b>59.05</b>  |                |
| 96      | <b>R52-2980</b>  | 52-2980   | Housing - Pivot Spa            | 1       | <b>45.75</b>  |                |
| 97      | <b>R52-2860</b>  | 119-4150,<br>52-2860  | Washer - Bed Bar Pivot         | 1       | <b>0.67</b>   |                |
| 98      | <b>R70-1200</b>  | 70-1200,<br>70-1200-01  | Frame - Single Point Adj.      | 1       | <b>273.60</b> |                |
| 99      | <b>R3290-316</b> | 3290-316,<br>57-3210  | Bolt - Hex Tap 3/8-16 x 1-1/2  | 4       | <b>0.72</b>   |                |
| 99      | <b>R323-53</b>   | 323-53,<br>57-3210  | Bolt - Hex HD 3/8-16 x 1-3/4   | 4       | <b>1.35</b>   |                |
| 100     | <b>R3255-9</b>   | 3255-9  | Washer - Lock 3/8 Ext. Star    | 4       | <b>0.19</b>   |                |
| 101     | <b>R321-5</b>    | 321-31,<br>321-5  | Bolt - Hex HD 1/4-20 x 7/8     | 2       | <b>0.29</b>   |                |
| 102     | <b>R3256-22</b>  | 24-9-BD,<br>3-1032,<br>3256-1,<br>3256-22,<br>93-0954,<br>93-0989   | Washer - Flat 1/4 Yellow       | 4       | <b>0.12</b>   |                |
| 103     | <b>R301504</b>   | 2296-42,<br>301504,<br>32127-24,<br>32128-33,<br>32146-17,<br>3296-16,<br>3296-42,<br>3296-42,<br>915661P | Locknut - ESNA 1/4-20          | 2       | <b>0.18</b>   |                |

All original equipment manufacturers names and part numbers are used for identification purposes only, and we are in no way implying that our products are original equipment parts. Prices subject to change without notice.



# Replaces Toro Greensmaster 300 Parts

SPA Cutting Unit - Models 04445, 04448 & 04450  
Reel & Bedknife



| Item No | R&R Part No.    | OEM Part No.  | Description                  | Qty Req | Price Each  | Order Quantity |
|---------|-----------------|---|------------------------------|---------|-------------|----------------|
| 104     | <b>R285-14</b>  | 285-14  | Plug - Pipe Frame            | 2       | <b>2.35</b> |                |
| 105     | <b>R3254-6</b>  | 01-166-0010,<br>01-166-0280,<br>01-166-0610,<br>3253-5,<br>3254-18,<br>3254-6,<br>3290-223,<br>48-9370                    | Washer - Lock 3/8            | 2       | <b>0.08</b> |                |
| 106     | <b>R57-9910</b> | 57-9910   | Bolt - Pivot                 | 2       | <b>2.95</b> |                |
| 107     | <b>R400264</b>  | 01-150-0180,<br>01-178-0610,<br>20-48-AD,<br>20-48-AGD,<br>32-9160,<br>3224-3,<br>323-29,<br>323-7,<br>400264,<br>908035P | Bolt - Hex HD 3/8-16 x 1-1/4 | 2       | <b>0.40</b> |                |

All original equipment manufacturers names and part numbers are used for identification purposes only, and we are in no way implying that our products are original equipment parts. Prices subject to change without notice.



# Replaces Toro Greensmaster 300 Parts

SPA Cutting Unit - Models 04445, 04448 & 04450  
Reel & Bedknife



| Item No | R&R Part No.     | OEM Part No.   | Description                  | Qty Req | Price Each   | Order Quantity |
|---------|------------------|--|------------------------------|---------|--------------|----------------|
| 108     | <b>R453011</b>   | 01-166-0100,<br>01-166-0120,<br>01-166-0270,<br>01-166-0500,<br>01-166-0600,<br>01-166-0620,<br>132-4593,<br>2356-3,<br>237-12,<br>24-10-AD,<br>24-11-AD,<br>24-11-BD,<br>24-12-AD,<br>24-12-BD,<br>30-9310,<br>32-8190,<br>3256-24,<br>3256-3,<br>3256-36,<br>3256-4,<br>453011,<br>47-9950,<br>48-9220,<br>513458,<br>7-0052 | Washer - Flat 3/8 SAE Y/Zinc | 4       | <b>0.11</b>  |                |
| 109     | <b>R52-3100</b>  | 52-3100  | Bolt - Eccentric Shoulder LH | 1       | <b>15.30</b> |                |
| 110     | <b>R52-3110</b>  | 52-3110  | Bolt - Shoulder HOC RH       | 1       | <b>14.70</b> |                |
| 111     | <b>R443828</b>   | 01-191-1018,<br>3214,<br>3220-6,<br>443828,<br>915089P   | Nut - 5/8-18 Hex             | 2       | <b>0.62</b>  |                |
| 112     | <b>R237-84</b>   | 237-84   | Grommet - Rubber             | 2       | <b>0.83</b>  |                |
| 113     | <b>R32108-20</b> | 32108-20   | Screw - Flat HD Cntrsunk     | 2       | <b>0.62</b>  |                |

All original equipment manufacturers names and part numbers are used for identification purposes only, and we are in no way implying that our products are original equipment parts. Prices subject to change without notice.



# Replaces Toro Greensmaster 300 Parts

SPA Cutting Unit - Models 04445, 04448 & 04450  
Reel & Bedknife



| Item No | R&R Part No.    | OEM Part No.   | Description               | Qty Req | Price Each  | Order Quantity |
|---------|-----------------|--|---------------------------|---------|-------------|----------------|
| 114     | <b>R322-5</b>   | 01-178-0508,<br>20-26-AD,<br>20-26-AGD,<br>30-9000,<br>322-5,<br>513341,<br>519755,<br>908019P,<br>N/A           | Bolt - Hex HD 5/16-18 x 1 | 2       | <b>0.40</b> |                |
| 115     | <b>R3255-8</b>  | 3255-8   | Washer - Lock 5/16 Ext    | 2       | <b>0.08</b> |                |
| 116     | <b>R187-0</b>   | 3256-25,<br>7-0032   | Washer - Flat 7/16 SAE    | 1       | <b>0.22</b> |                |
| 117     | <b>R52-2990</b> | 324-25,<br>52-2990   | Bolt - Spring Retainer    | 1       | <b>4.65</b> |                |
| 118     | <b>R57-5190</b> | 32110-19,<br>57-5190   | Screw - Adjusting         | 2       | <b>1.95</b> |                |
| 119     | <b>R443818</b>  | 01-191-0813,<br>3218-18,<br>3218-5,<br>3248-18   | Nut - 1/2-13 Hex Jam Zinc | 2       | <b>0.35</b> |                |
| 120     | <b>R29-8870</b> | 29-8870  | Washer - Adj. Handle      | 1       | <b>0.46</b> |                |
| 121     | <b>R52-3010</b> | 52-3010  | Nut - 1/2-28 LH Jam       | 2       | <b>2.45</b> |                |
| 122     | <b>R254-72</b>  | 01-103-0050,<br>01-103-0120,<br>01-103-0140,<br>1-543508,<br>254-71,<br>254-72,<br>40439,<br>62-3340,<br>99-4511 | Cup - Bearing             | 2       | <b>3.85</b> |                |

All original equipment manufacturers names and part numbers are used for identification purposes only, and we are in no way implying that our products are original equipment parts. Prices subject to change without notice.



# Replaces Toro Greensmaster 300 Parts

SPA Cutting Unit - Models 04445, 04448 & 04450  
Reel & Bedknife



| Item No | R&R Part No.     | OEM Part No.   | Description                       | Qty Req | Price Each   | Order Quantity |
|---------|------------------|--|-----------------------------------|---------|--------------|----------------|
| 123     | <b>R254-94</b>   | 1-543509,<br>254-94,<br>32-8090,<br>32-8240,<br>32-9640,<br>40440,<br>62-3330              | Tapered Bearing Cone              | 2       | <b>7.15</b>  |                |
| 124     | <b>R353-585</b>  | 353-585,<br>353-587,<br>354-34,<br>72-4380,<br>75-1210,<br>75-1270,<br>92-8863,<br>92-8864 | Seal - High Pressure - Reel Motor | 1       | <b>19.20</b> |                |
| 125     | <b>R253-96</b>   | 253-96   | Seal - Oil Single Lip Reel        | 2       | <b>5.15</b>  |                |
| 126     | <b>R114-4683</b> | 114-4683   | Pin - Hinge 6-1/4 Long            | 0       | <b>36.55</b> |                |

All original equipment manufacturers names and part numbers are used for identification purposes only, and we are in no way implying that our products are original equipment parts. Prices subject to change without notice.