

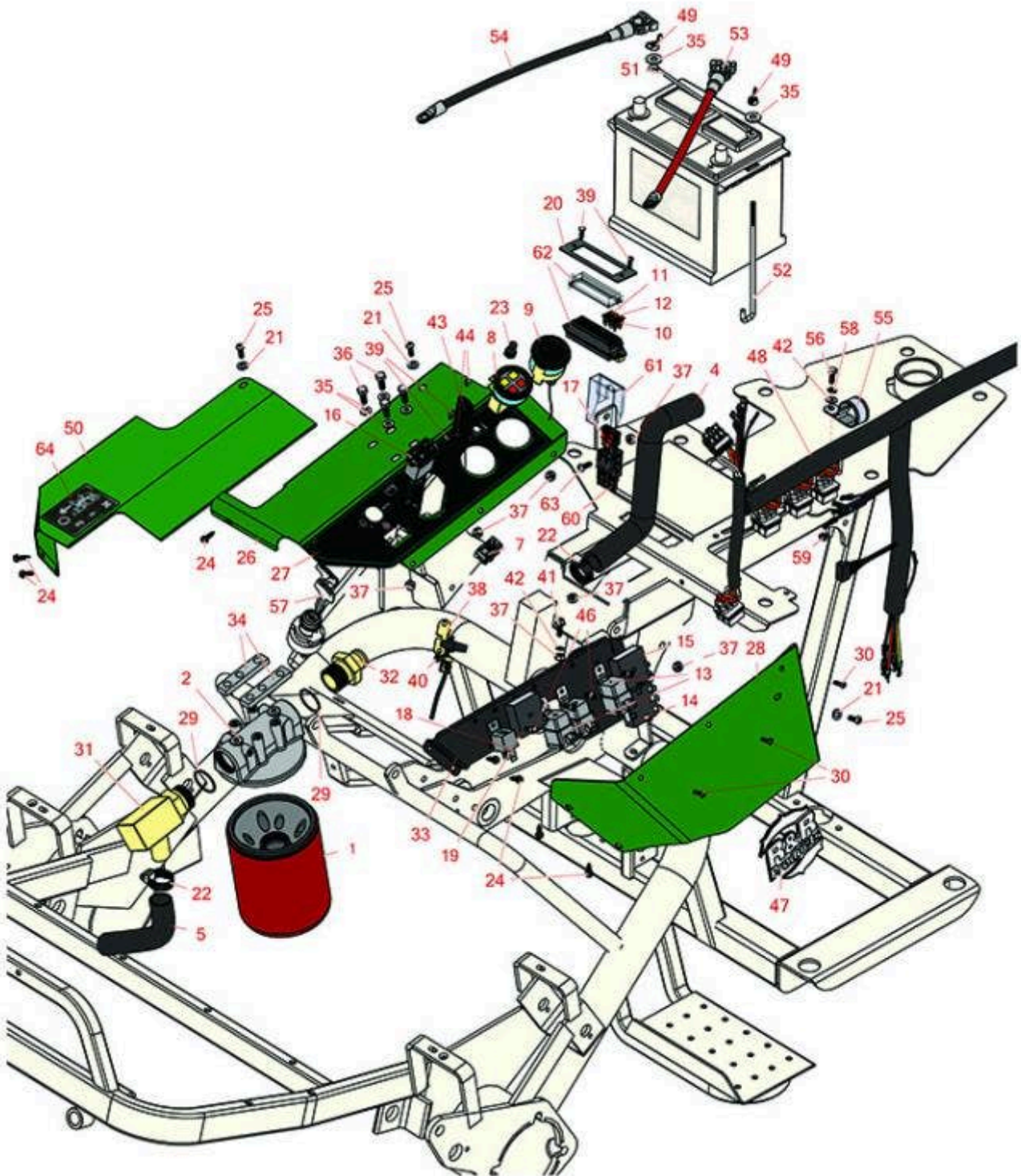


# Replaces R&R Products Versa-Green

## 2160D Parts

Traction Unit

Hydraulic Filter & Control Panel



All original equipment manufacturers names and part numbers are used for identification purposes only, and we are in no way implying that our products are original equipment parts. Prices subject to change without notice.



# Replaces R&R Products Versa-Green

## 2160D Parts

Traction Unit

Hydraulic Filter & Control Panel



Item No	R&R Part No.	OEM Part No.	Description	Qty Req	Price Each	Order Quantity
<b>Filters</b>						
1	<b>R74-3570</b>	R012628, R44-5340, R555771, R57-0990, R68-9880	Baldwin Oil Filter - Hyd 10 Micron	1	<b>24.60</b>	
1	<b>RRF10615</b>		SilverGuard Oil Filter	1	<b>24.15</b>	
2	<b>R44-5560</b>	R27-2370	Head Assy - Hyd Oil Filter	1	<b>108.55</b>	
<b>Hoses</b>						
4	<b>R83-1430</b>		Hose - Filter to Tank	1	<b>10.95</b>	
5	<b>R68-5880</b>	R28-2040, R51-0040	Hydraulic Hose Assy	1	<b>74.60</b>	
<b>Gauges and Controls</b>						
7	<b>R150251</b>		Switch - Light	1	<b>12.85</b>	
8	<b>R93-7053</b>	R87-4140	Cluster - Lamp Warning	1	<b>98.85</b>	
9	<b>R150787</b>		Gauge - Temp	1	<b>65.20</b>	
10	<b>R150811</b>		Fuse - 5 Amp	1	<b>2.45</b>	
11	<b>R150813</b>	R109101	Fuse - 20 Amp	1	<b>2.45</b>	
12	<b>R150812</b>	R109355, R218-581	Fuse - 15 Amp	1	<b>2.45</b>	
13	<b>R99-7430</b>		Relay - 30 Amp	5	<b>15.05</b>	
14	<b>R150259</b>		Switch - Seat Delay	1	<b>109.60</b>	
15	<b>R150262</b>		Timer - Glow Plug - 5 Sec	1	<b>116.95</b>	
16	<b>R75-6820</b>		Meter - Hour - Quartz	1	<b>59.85</b>	
17	<b>R150795</b>		Fuse - 50 Amp	1	<b>5.45</b>	

All original equipment manufacturers names and part numbers are used for identification purposes only, and we are in no way implying that our products are original equipment parts. Prices subject to change without notice.



# Replaces R&R Products Versa-Green

## 2160D Parts

Traction Unit

Hydraulic Filter & Control Panel



Item No	R&R Part No.	OEM Part No.	Description	Qty Req	Price Each	Order Quantity
18	<b>R99-7435</b>		Relay - 70 Amp	1	<b>21.90</b>	
19	<b>R150268</b>		Delay - Timer - 3 Second	1	<b>108.65</b>	
<b>Other Parts Available</b>						
20	<b>R150832</b>		Plate - Fuse Block	1	<b>10.95</b>	
21	<b>R3256-22</b>	R09061, R24-9-BD, R3-1032, R93-0954, R93-0989	Washer - Flat 1/4 Yellow	3	<b>0.12</b>	
22	<b>R2412-34</b>	R31-0120	Clamp - Hose .75-1.5	2	<b>1.50</b>	
23	<b>R150253</b>		Cover - Boot - Light Switch	1	<b>7.40</b>	
24	<b>R32104-116</b>		Screw - 12 x 1/2 Sheet Metal HswH	7	<b>0.45</b>	
25	<b>R3274-69</b>	R3274-91	Screw - 1/4-20 x 3/4 Hsbh	3	<b>0.43</b>	
26	<b>R150583</b>		Control Panel - Diesel	1	<b>75.15</b>	
27	<b>R150594</b>		Decal - Control Panel - Diesel	1	<b>25.80</b>	
28	<b>R150584</b>		Cover - Control Panel - Diesel	1	<b>25.55</b>	
29	<b>R237-101</b>		O-Ring	2	<b>2.15</b>	
30	<b>R3274-31</b>	R3274-68, R46-8560	Screw - Button HD Soc CS 1/4-20 x 5/8	3	<b>0.75</b>	
31	<b>R353-564</b>		Hydraulic Fitting - 90 Deg	1	<b>86.85</b>	
32	<b>R353-563</b>	R95-4356	Hydraulic Fitting - Filter	1	<b>65.95</b>	
33	<b>R150831</b>		Mounting Bar - Relay	1	<b>27.65</b>	
34	<b>R27-2380</b>		Spacer - Oil Filter	2	<b>10.95</b>	

All original equipment manufacturers names and part numbers are used for identification purposes only, and we are in no way implying that our products are original equipment parts. Prices subject to change without notice.



# Replaces R&R Products Versa-Green 2160D Parts

*Traction Unit  
Hydraulic Filter & Control Panel*



Item No	R&R Part No.	OEM Part No.	Description	Qty Req	Price Each	Order Quantity
35	<b>R453009</b>	3256-3, R01-166-0400, R24-10-BD, R24-9-AD, R24H1136, R32-9650, R3256-2, R3256-23, R3256-67, R3290-217, R3556-3, R4-2390, R452006, R7-0152	Washer - Flat 5/16 SAE	4	<b>0.13</b>	
36	<b>R322-4</b>	R3290-115, R908018P	Bolt - Hex HD 5/16-18 x 7/8	4	<b>0.47</b>	
37	<b>R301504</b>	R32127-24, R32146-17, R3296-16, R3296-42, R915661P, RM40333	Locknut - ESNA 1/4-20	7	<b>0.18</b>	
38	<b>R150819</b>		Throttle Control - R&R Diesel Gm	1	<b>28.15</b>	
39	<b>R300104</b>		Screw - Button HD Cap 10-32 x 5/8	4	<b>0.32</b>	
40	<b>R6040-106</b>	R32127-33, R3296-27	Locknut - Stainless	2	<b>0.45</b>	
41	<b>R49-2040</b>	R32104-42, R32104-95, R32144-44	Bolt - Hex Washer 1/4-20 x 3/4	1	<b>0.72</b>	
42	<b>R453023</b>	R3256-1, R3256-72	Washer - Flat 1/4	3	<b>0.12</b>	
43	<b>R150252</b>		Cover - Control Panel	1	<b>8.20</b>	
44	<b>R150291</b>	R32144-87	Screw - 8 x 1/2 Sheet Metal	2	<b>0.18</b>	
46	<b>R434027</b>	R3258-165	Bolt - Soc HD Cap 1/4-20 x 1/2	5	<b>0.65</b>	

All original equipment manufacturers names and part numbers are used for identification purposes only, and we are in no way implying that our products are original equipment parts. Prices subject to change without notice.



# Replaces R&R Products Versa-Green

## 2160D Parts

Traction Unit

Hydraulic Filter & Control Panel



Item No	R&R Part No.	OEM Part No.	Description	Qty Req	Price Each	Order Quantity
47	<b>RR100</b>		R&R Emblem	1	<b>21.10</b>	
48	<b>R150593</b>		Wiring Harness - Diesel	1	<b>441.65</b>	
49	<b>R09030</b>	R32103-1, R32103-12, R32103-22	Nut - Wing 1/4	2	<b>0.47</b>	
50	<b>R94-2694G</b>		Cover - RH - Green	1	<b>28.20</b>	
51	<b>R150278</b>		Rod - Battery - Diesel	1	<b>8.45</b>	
52	<b>R150279</b>		Post - Battery - Stainless	2	<b>10.70</b>	
53	<b>R150846</b>	R108-9455	Battery Cable - Positive	1	<b>32.95</b>	
54	<b>R150847</b>		Battery Cable - Negative	1	<b>31.45</b>	
55	<b>R304-61</b>		Clamp - Hose	2	<b>6.05</b>	
56	<b>R321-4</b>	400108, R01-150-1030, R01-178-0406, R20-3-AGD, R3222-1, R400108	Bolt - Hex HD 1/4-20 x 3/4	2	<b>0.52</b>	
57	<b>RXRC10153630</b>	RX6855153640	Kubota Keys - (2) Start Assy	1	<b>12.34</b>	
58	<b>R3253-3</b>	446130, R01-166-0070, R01-166-0410, R23-9-GD, R24-7150, R352-167, R446128, R446130	Washer - Lock 1/4	2	<b>0.11</b>	
59	<b>R443102</b>	R01-188-0420, R22-11-AJD, R3217-5	Nut - 1/4-20 Yellow Zinc	2	<b>0.22</b>	
60	<b>R150793</b>		Fuse Block - 60 Amp	1	<b>48.10</b>	

All original equipment manufacturers names and part numbers are used for identification purposes only, and we are in no way implying that our products are original equipment parts. Prices subject to change without notice.



# Replaces R&R Products Versa-Green

## 2160D Parts

*Traction Unit*

*Hydraulic Filter & Control Panel*



Item No	R&R Part No.	OEM Part No.	Description	Qty Req	Price Each	Order Quantity
61	<b>R150794</b>		Cover - Fuse Block - 60 Amp	1	<b>4.70</b>	
62	<b>R150790</b>		Fuse Block - Diesel	1	<b>30.95</b>	
63	<b>R297-1</b>	R297-5	Screw - Button HD Socket 3/4	1	<b>0.45</b>	
64	<b>R93-8065</b>	R83-1850	Decal - Traction	1	<b>4.90</b>	

All original equipment manufacturers names and part numbers are used for identification purposes only, and we are in no way implying that our products are original equipment parts. Prices subject to change without notice.