

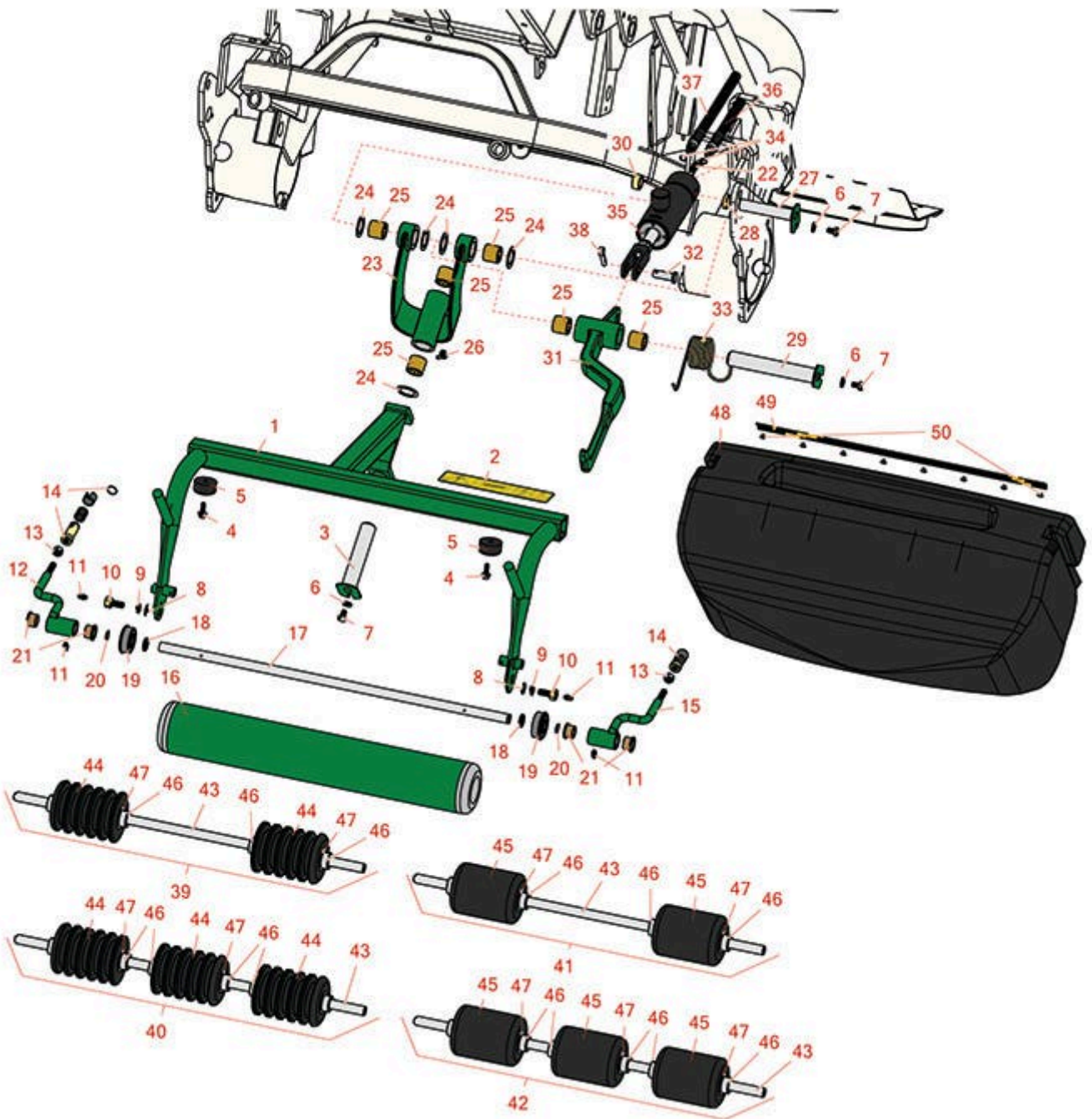


Replaces R&R Products Versa-Green

1860 Parts

Traction Unit

Left Hand Pull Frame



All original equipment manufacturers names and part numbers are used for identification purposes only, and we are in no way implying that our products are original equipment parts. Prices subject to change without notice.



Replaces R&R Products Versa-Green

1860 Parts

Traction Unit

Left Hand Pull Frame



| Item No | R&R Part No. | OEM Part No. | Description | Qty Req | Price Each | Order Quantity |
|---------|------------------|--|--------------------------------|---------|---------------|----------------|
| 1 | R86-9810G | | Frame - Pull LH - Green | 1 | 144.20 | |
| 2 | R93-8064 | | Decal - Warning | 1 | 2.50 | |
| 3 | R10-6090G | | Pin - Pivot 4-7/8 Long - Green | 1 | 24.75 | |
| 4 | R49-2040 | R32104-42, R32104-95, R32144-44 | Bolt - Hex Washer 1/4-20 x 3/4 | 2 | 0.72 | |
| 5 | R94-4548 | | Rubber Bumper | 2 | 2.55 | |
| 6 | R453009 | 3256-3, R01-166-0400, R24-10-BD, R24-9-AD, R24H1136, R32-9650, R3256-2, R3256-23, R3256-67, R3290-217, R3556-3, R4-2390, R452006, R7-0152 | Washer - Flat 5/16 SAE | 3 | 0.13 | |
| 7 | R322-1 | R01-178-0504, R20-22-AD, R20-22-AGD, R513337, RB310801 | Bolt - Hex HD 5/16-18 x 1/2 | 3 | 0.47 | |

All original equipment manufacturers names and part numbers are used for identification purposes only, and we are in no way implying that our products are original equipment parts. Prices subject to change without notice.



Replaces R&R Products Versa-Green

1860 Parts

Traction Unit

Left Hand Pull Frame



| Item No | R&R Part No. | OEM Part No. | Description | Qty Req | Price Each | Order Quantity |
|---------|-----------------|---|------------------------------|---------|-------------|----------------|
| 8 | R453011 | 3256-24, 453011, R01-166-0100, R01-166-0120, R01-166-0270, R01-166-0500, R01-166-0600, R01-166-0620, R132-4593, R237-12, R24-10-AD, R24-11-AD, R24-11-BD, R24-12-AD, R24-12-BD, R30-9310, R32-8190, R3256-24, R3256-3, R3256-36, R3256-4, R47-9950 | Washer - Flat 3/8 SAE Y/Zinc | 2 | 0.11 | |
| 9 | R3253-21 | 3253-21, R215-51, R30-8470, R7-1912, RMT3949 | Washer - Lock 3/8 | 2 | 0.14 | |
| 10 | R11-0160 | | Screw - Roller Shaft | 2 | 8.75 | |

All original equipment manufacturers names and part numbers are used for identification purposes only, and we are in no way implying that our products are original equipment parts. Prices subject to change without notice.



Replaces R&R Products Versa-Green

1860 Parts

Traction Unit

Left Hand Pull Frame



| Item No | R&R Part No. | OEM Part No. | Description | Qty Req | Price Each | Order Quantity |
|---------|------------------|--|--------------------------------|---------|---------------|----------------|
| 11 | R302-5 | R173-0, R21-6010, R255825, R302-37, R302-47, R302-57, R302-58, R302-6, R31-0300, R32-9660, R471214, R471223, R471226, R60-0800, R62-3880, R92-4181, RJD7797, RJD7842, RJD7844, RM0004 | Fitting - Grease | 5 | 0.27 | |
| 12 | R92-0586G | | Arm - Pull LH - Green | 1 | 36.40 | |
| 13 | R3220-3 | R01-191-0624, R3290-149 | Nut - Jam Ball Joint | 2 | 0.24 | |
| 14 | R99-1460 | R2411-28, R2411-29, R2411-30, R2411-6, R2411-8, R8-7710, R94-2959 | Receiver - Ball Joint | 2 | 11.25 | |
| 15 | R92-0585G | | Arm - Pull RH - Green | 1 | 36.40 | |
| 16 | R99-4277G | | Basket Roller - Smooth - Green | 1 | 163.55 | |
| 17 | R21-8470 | | Shaft - Roller | 1 | 30.20 | |
| 18 | R253-83 | | Seal - Oil 7/8 OD x 5/8 ID | 2 | 6.25 | |
| 19 | R251-141 | | Bearing - Roller | 2 | 19.20 | |
| 20 | R3290-317 | | Washer - Wave | 2 | 1.45 | |

All original equipment manufacturers names and part numbers are used for identification purposes only, and we are in no way implying that our products are original equipment parts. Prices subject to change without notice.



Replaces R&R Products Versa-Green

1860 Parts

Traction Unit

Left Hand Pull Frame



| Item No | R&R Part No. | OEM Part No. | Description | Qty Req | Price Each | Order Quantity |
|---------|-------------------|--|---|---------|---------------|----------------|
| 21 | R3-1506 | R256-287, R3709088, R4-4550, R75-2160, R9329 | Bushing - Bronze | 4 | 3.05 | |
| 22 | R700415 | | Zerk - Grease 1/8 PTF 45 Deg | 1 | 1.40 | |
| 23 | R10-7820G | | Pivot Hinge Assy - Green | 1 | 280.40 | |
| 24 | R10-8110 | | Washer - Pivot Pin | 6 | 0.99 | |
| 25 | R3-0348 | R324124, R342124 | Bushing | 6 | 4.70 | |
| 26 | R302-60 | | Zerk - Grease 90 Deg. | 1 | 0.68 | |
| 27 | R10-6060G | | Pin - Pivot 3-7/8 Long - Green | 1 | 13.10 | |
| 28 | R105-3828 | | Spacer - Lift Cyl | 1 | 6.55 | |
| 29 | R10-6110G | | Pin - Hinge 6 1/4 Long - Green | 1 | 26.95 | |
| 30 | R74-3730 | R217-96 | Spacer | 1 | 3.15 | |
| 31 | R107-2598G | | Lift Arm Assy - LH - Green | 1 | 83.15 | |
| 32 | R283-8 | R17-3670, R7-2035 | Clevis Pin - 1/2 x 1-27/64 | 1 | 2.55 | |
| 33 | R110-3952 | R106-9079 | Spring - Torsion - LH | 1 | 6.05 | |
| 34 | R237-22 | R107-8844, R232-72, R237-78 | O-Ring | 2 | 0.62 | |
| 35 | R106-9066 | | Hydraulic Cylinder - LH / RH | 1 | 317.30 | |
| 35 | R107-2564 | | Seal Kit - Fits 107-1981 Hyd Cyl | 1 | 77.55 | |
| 36 | R150638 | | Hydraulic Hose Assy - Front LH Cylinder | 1 | 30.90 | |
| 37 | R150632 | | Hose - Cyl LH Drop Fits | 1 | 35.60 | |

All original equipment manufacturers names and part numbers are used for identification purposes only, and we are in no way implying that our products are original equipment parts. Prices subject to change without notice.



Replaces R&R Products Versa-Green

1860 Parts

Traction Unit

Left Hand Pull Frame



| Item No | R&R Part No. | OEM Part No. | Description | Qty Req | Price Each | Order Quantity |
|---------|------------------|--|--|---------|---------------|----------------|
| 38 | R3272-11 | R01-151-0010, R01-151-0040, R28-18-D, R28-28-D, R3211-72 | Pin - Cotter | 1 | 0.70 | |
| 39 | R150325 | | Basket Roller - Grooved UHMW Polyethylene 2 Section | 1 | 154.45 | |
| 40 | R150329 | | Basket Roller - Grooved UHMW Polyethylene 3 Section | 1 | 207.30 | |
| 41 | R150330 | | Basket Roller - Smooth UHMW Polyethylene 2 Section | 1 | 135.75 | |
| 42 | R150332 | | Roller - Smooth UHMW Polyethylene 3-1/2 3 Sec | 1 | 173.40 | |
| 43 | R150326 | | Shaft - Stainless Roller | 1 | 60.95 | |
| 44 | R150327 | | Roller Section - 3.5 UHMW Grooved | 0 | 50.25 | |
| 45 | R150331 | | Section - 3-1/2 UHMW Smooth | 0 | 35.05 | |
| 46 | R150328 | R3709875, R94-9213 | Collar - Retaining 5/8 | 0 | 3.15 | |
| 47 | R302295 | | Washer | 0 | 0.45 | |
| 48 | R150257 | | Grass Basket Assembly | 1 | 162.25 | |
| 49 | R104-2607 | | Strip - Reinforcing Grass Basket | 1 | 8.75 | |
| 50 | R3290-382 | R3269-15 | Rivet - 5/32 x 1/2 Pop Rivet | 8 | 0.35 | |

All original equipment manufacturers names and part numbers are used for identification purposes only, and we are in no way implying that our products are original equipment parts. Prices subject to change without notice.