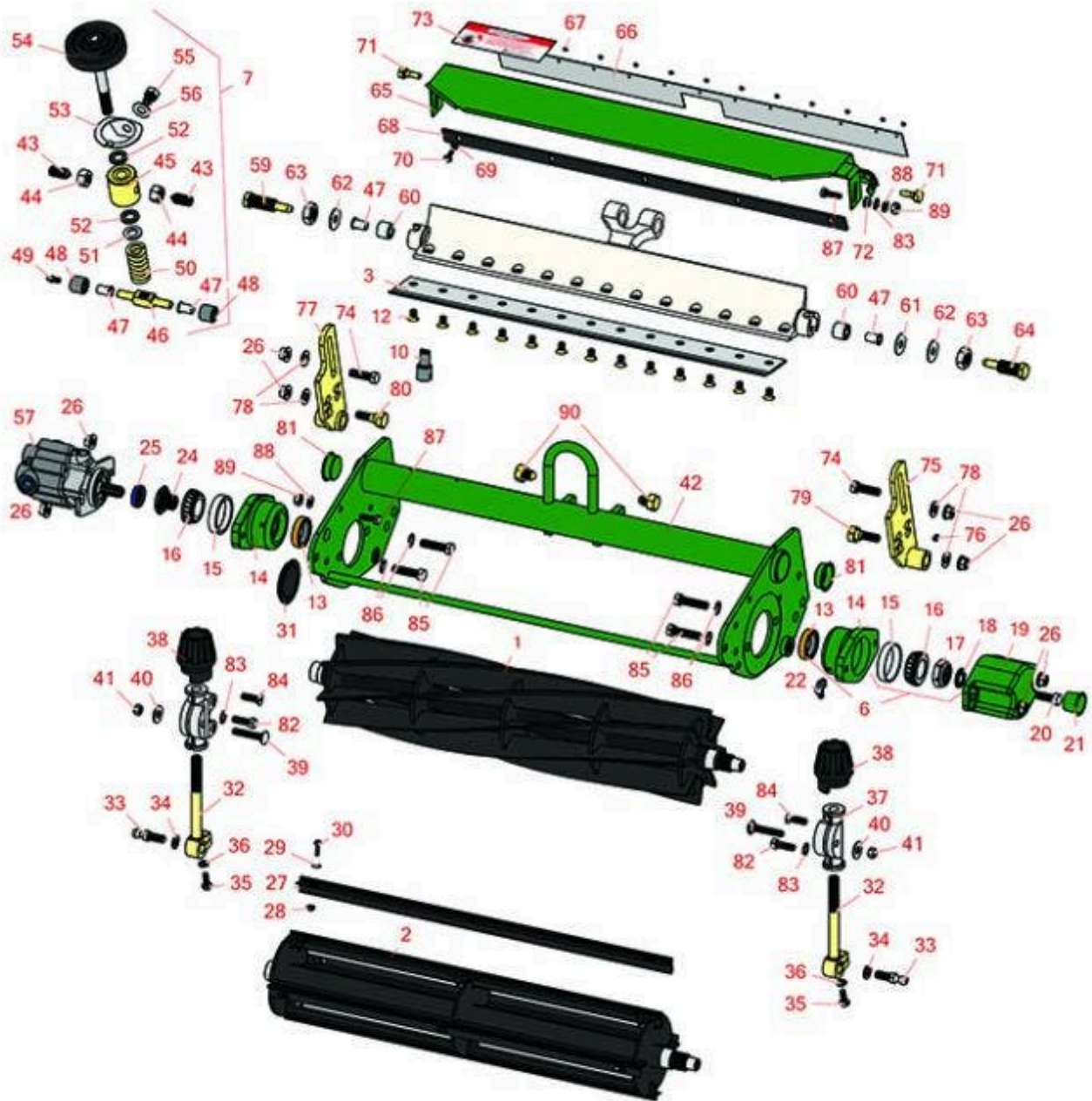




Replaces R&R Products Versa-Green

1860 Parts

Single Point Cutting Unit
Reel & Bedknife



All original equipment manufacturers names and part numbers are used for identification purposes only, and we are in no way implying that our products are original equipment parts. Prices subject to change without notice.



Replaces R&R Products Versa-Green

1860 Parts

Single Point Cutting Unit
Reel & Bedknife



Item No	R&R Part No.	OEM Part No.	Description	Qty Req	Price Each	Order Quantity
---------	--------------	--------------	-------------	---------	------------	----------------

R&R Reels, Lifetime Guaranteed

1	R5-3189	R12-3599, R130-6469	Reel - 8 Blade	1	264.70	
1	R5-3189H		Reel - 8 Blade Heavy Duty	1	253.70	
1	R5-3195		Reel - 9 Blade	1	262.20	
1	R5-3200		Reel - 4 Blade	1	230.95	
1	R5-3205	R12-0279, R12-0729, R12-8779	Reel - 5 Blade	1	236.65	
1	R5-3206		Reel - 6 Blade	1	241.95	
1	R5-3215		Reel - 5 Blade Heavy Duty	1	241.70	
1	R12-2789	R130-6470	Reel - 11 Blade	1	284.55	
2	R150480		Brush Reel	1	203.80	

R&R Bedknives, Lifetime Guaranteed

3	R150466	R63-8600, R94-6393	Bedknife - Super Thick .312 - 1.00 HOC	1	39.70	
3	R94-6392	R57-4970, R62-2500	Bedknife - High Cut .312 - 1.00 HOC	1	39.25	
3	R93-4264	R57-4960, R63-8470	Bedknife - Low Cut .187 - 1.00 HOC	1	38.10	
3	R93-4263	R57-4980, R63-8560, R66-9320, R93-6039	Bedknife - Tournament Cut .125 - .500 HOC	1	39.75	
3	R93-4262	R62-8250, R65-8250	Bedknife - Micro Cut .062 - .187 HOC	0	36.50	

R&R Razor Tool Steel Bedknives, Lifetime Guaranteed

All original equipment manufacturers names and part numbers are used for identification purposes only, and we are in no way implying that our products are original equipment parts. Prices subject to change without notice.



Replaces R&R Products Versa-Green

1860 Parts

Single Point Cutting Unit
Reel & Bedknife



Item No	R&R Part No.	OEM Part No.	Description	Qty Req	Price Each	Order Quantity
---------	--------------	--------------	-------------	---------	------------	----------------

3	R115-1881		Bedknife - Razor Tool Steel - 21 Tournament Cut .125 - .500 HOC	1	79.15	
---	------------------	--	---	---	--------------	--

Tech Note: Razor Tool Steel Bedknives are constructed from high grade tool steel for extended life and optimum cut.:

3	R115-1880		Bedknife - Razor Tool Steel - 21 Micro Cut .062 - .187 HOC	1	79.90	
---	------------------	--	---	---	--------------	--

Tech Note: Razor Tool Steel Bedknives are constructed from high grade tool steel for extended life and optimum cut.:

Overhaul Kits

5	R13-3659		Overhaul Kit - Cutting Unit	0	61.85	
---	-----------------	--	-----------------------------	---	--------------	--

Tech Note: Includes 13 ea.:R150477 Screws; 4 ea.: R52-2890 Bushings; 2 ea.: R237-77 O-rings, R253-96 Seals, R254-72 Bearing Cups, R254-94 Bearings, R52-2900 Washers, R57-5280 Bearings, R62-5510 Bushings, R63-9510 Bushings; 1 ea.: R253-61 Seal & R32127-46 Locknut:

6	R107-1590		Overhaul Kit - Cutting Unit	0	36.10	
---	------------------	--	-----------------------------	---	--------------	--

Tech Note: Includes 2 ea.: R253-96 Seals, R254-72 Bearing Cups, R254-94 Bearings; 1 ea.: R253-61 Seal & R32127-46 Locknut:

7	R255-311		Kit - Micro Adjusting	0	153.05	
---	-----------------	--	-----------------------	---	---------------	--

Tech Note: Includes 2 ea: R443818 Nut, R52-2890 Bushing, R57-5190 Screw, R62-5510 Bushing, R77-0350 Retainer; 1 ea: R187-0 Washer, R257-5 Washer, R52-2990 Bolt, R57-5260 Pivot, R66-7220 Arm, R66-7230 Spring, R77-0300 Handle, R77-0330 Housing:

8	R255-310		Overhaul Kit - Cutting Unit	0	69.20	
---	-----------------	--	-----------------------------	---	--------------	--

Tech Note: Includes 4 ea: R52-2890 Bushings; 2 ea: R237-77 O-Rings, R253-96 Seals, R254-72 Cups, R254-94 Bearings, R52-2900 Washers, R57-5280 Bearings, R62-5510 Bushings, R63-9510 Bushings; 1 ea: R253-61 Seal & R32127-46 Locknut:

Service Tools

10	R51-0880		Bedknife Screw Driver Tool	0	35.65	
----	-----------------	--	----------------------------	---	--------------	--

Other Parts Available

All original equipment manufacturers names and part numbers are used for identification purposes only, and we are in no way implying that our products are original equipment parts. Prices subject to change without notice.



Replaces R&R Products Versa-Green

1860 Parts

Single Point Cutting Unit
Reel & Bedknife



Item No	R&R Part No.	OEM Part No.	Description	Qty Req	Price Each	Order Quantity
12	R150477	R64249-01, RA119001	Screw - Bedknife 5/16-18 x 1/2	13	0.34	
12	R150476	R170476, R3-3816, R52-4910, R57-4910	Screw - Bedknife 5/16-18 x 5/8	13	0.29	
13	R253-96		Seal - Oil Single Lip Reel	2	5.15	
14	R10-5120G		Housing - Bearing Reel - Green	2	46.35	
<i>Tech Note: Includes R253-96, R254-72 & R302-5:</i>						
15	R254-72	R01-103-0050, R01-103-0120, R01-103-0140, R1-543508, R254-71, R313456, R40439, R521744, R62-3340, R814474, R99-4511, RJD8253	Cup - Bearing	2	3.85	
16	R254-94	R1-543509, R313089, R32-8090, R32-8240, R32-9640, R40440, R521494, R62-3330, R814473, RJD8933, RTCU37582	Tapered Bearing Cone	2	7.15	
17	R32127-46	R3296-60	Locknut	1	2.85	
18	R253-61		Seal - Oil Reel	1	4.20	
19	R10-5080G		Roller End - Cap Reel Brg Housing - Green	1	49.25	

All original equipment manufacturers names and part numbers are used for identification purposes only, and we are in no way implying that our products are original equipment parts. Prices subject to change without notice.



Replaces R&R Products Versa-Green

1860 Parts

Single Point Cutting Unit
Reel & Bedknife



Item No	R&R Part No.	OEM Part No.	Description	Qty Req	Price Each	Order Quantity
20	R323-2	R01-178-0604	Bolt - Hex HD 3/8-16 x 1	1	0.44	
21	R12-0460		Caplug - End Cap	1	0.98	
22	R302-40	R302-13	Fitting - Grease	1	0.82	
24	R77-0340		Nut - Splined Reel	1	15.10	
25	R353-585	R353-469, R353-587, R354-34, R45401-2, R500843, R72-4380, R75-1210, R75-1270, R92-8863, R92-8864	Seal - High Pressure - Reel Motor	1	19.20	
26	R3296-39	3296-39, R32127-25, R32128-36, R3296-17, R3296-22, R915663P, R99-7443	Locknut - 3/8-16 Nylon	8	1.40	
27	R150481		Brush Assy - Brush Reel	4	33.50	
28	R3296-9	R32127-17	Locknut - Comb	12	0.34	
29	R150426		Washer - 8 SAE	12	0.23	
30	R150425		Bolt - Hex HD 8-32 x 5/8	12	0.23	
31	R150485	R2410-30	Cap - Protective Bearing Housing	1	0.70	
32	R10-5010		Screw - Roller Adjustment	2	24.65	
33	R94-2958	R2411-7	Stud - Alloy Ball Joint	2	3.40	

All original equipment manufacturers names and part numbers are used for identification purposes only, and we are in no way implying that our products are original equipment parts. Prices subject to change without notice.



Replaces R&R Products Versa-Green

1860 Parts

Single Point Cutting Unit
Reel & Bedknife



Item No	R&R Part No.	OEM Part No.	Description	Qty Req	Price Each	Order Quantity
34	R3254-6	446142, R01-166-0010, R01-166-0280, R01-166-0610, R12H304, R3253-5, R3254-18, R3290-223, R446140, R446142, R48-9370	Washer - Lock 3/8	4	0.08	
35	R321-4	400108, R01-150-1030, R01-178-0406, R20-3-AGD, R3222-1, R400108	Bolt - Hex HD 1/4-20 x 3/4	2	0.52	
36	R3253-3	446130, R01-166-0070, R01-166-0410, R23-9-GD, R24-7150, R352-167, R446128, R446130	Washer - Lock 1/4	2	0.11	
37	R10-5060		Bracket - Roller Adj	2	22.25	
38	R65-8600	R10-5040	Knob - Height Adjusting	2	19.90	
39	R441674	R01-173-0514, R01-173-0516, R3-7253, R3230-5	Screw - 5/16-18 x 1-3/4 Carriage	2	0.70	

All original equipment manufacturers names and part numbers are used for identification purposes only, and we are in no way implying that our products are original equipment parts. Prices subject to change without notice.



Replaces R&R Products Versa-Green

1860 Parts

Single Point Cutting Unit
Reel & Bedknife



Item No	R&R Part No.	OEM Part No.	Description	Qty Req	Price Each	Order Quantity
40	R453009	3256-3, R01-166-0400, R24-10-BD, R24-9-AD, R24H1136, R32-9650, R3256-2, R3256-23, R3256-67, R3290-217, R3556-3, R4-2390, R452006, R7-0152	Washer - Flat 5/16 SAE	2	0.13	
40	R310266	3256-3, R09056, R452004	Washer - Flat 5/16 USS	2	0.23	
41	R32153-3	R119-4038, R22-12-AJFD, R32127-35, R32146-5, R3296-18, R3296-31, RJ317000	Locknut - 5/16-18 ESNA Zinc	2	0.62	
42	R70-1200G		Frame - Single Point Adj. - Green	1	273.60	
43	R57-5190	R32110-19	Screw - Adjusting	2	1.95	
44	R443818	R01-191-0813, R3218-18, R3218-5	Nut - 1/2-13 Hex Jam Zinc	2	0.35	
45	R77-0330		Housing - Pivot Spa	1	42.35	
46	R57-5260	R107-7409	Pivot - 1/2-20 - Bed Bar	1	15.75	
47	R52-2890		Bushing - Flanged	4	0.77	
48	R62-5510	R52-2870, R52-2880	Bushing	2	4.35	

All original equipment manufacturers names and part numbers are used for identification purposes only, and we are in no way implying that our products are original equipment parts. Prices subject to change without notice.



Replaces R&R Products Versa-Green

1860 Parts

Single Point Cutting Unit
Reel & Bedknife



Item No	R&R Part No.	OEM Part No.	Description	Qty Req	Price Each	Order Quantity
49	R302-18		Zerk - Grease Press Style	1	0.47	
50	R66-7230		Spring - Compression	1	4.80	
51	R257-5	257-5	Washer - Thrust	1	1.85	
52	R77-0350		Retainer - Bearing	2	1.45	
53	R66-7220		Arm - Spring Handle Assy	1	8.75	
54	R77-0300	R77-0300-01	Handle Assy	1	37.80	
55	R52-2990	R324-25	Bolt - Spring Retainer	1	4.65	
56	R187-0	3256-25, R3256-25, R7-0032	Washer - Flat 7/16 SAE	1	0.22	
57	R105-9770	R10-5090, R26-5690, R70-9800, R94-3506, R94-3507	Hydraulic Motor - Reel Quick Release	1	383.95	
59	R52-2930		Bolt - Bed Bar	1	8.95	
60	R63-9510	R63-9480	Bushing - Rubber For Bed Bar	2	4.60	
61	R52-2860	R119-4150	Washer - Bed Bar Pivot	1	0.67	
62	R52-2900		Washer - Nylon	2	0.57	
63	R443828	R01-191-1018, R3220-6, R915089P	Nut - 5/8-18 Hex	2	0.62	
64	R52-2910		Bolt - Eccentric Bed Bar	1	10.70	
65	R57-5200S		Shield - Grass - Stainless	1	66.15	
66	R57-5210		Deflector - Styrene	1	4.55	
67	R3295-46		Tube - Rivet Smi Grass Shield	13	0.11	

All original equipment manufacturers names and part numbers are used for identification purposes only, and we are in no way implying that our products are original equipment parts. Prices subject to change without notice.



Replaces R&R Products Versa-Green

1860 Parts

Single Point Cutting Unit
Reel & Bedknife



Item No	R&R Part No.	OEM Part No.	Description	Qty Req	Price Each	Order Quantity
68	R36-7260		Bar - Cut Off Grass Shield	1	10.35	
69	R3256-14	R24-7-BD, R297-3, R32125-2, R3256-51, R51-2170	Washer - 10 Flat	5	0.34	
70	R32144-73	R104-2065	Screw - Machine Hex Washer Head	5	0.39	
71	R57-9910		Bolt - Pivot	2	2.95	
72	R237-84		Grommet - Rubber	2	0.83	
73	R354083	R104-7729, R361877	Decal - Danger	1	1.25	
74	R400264	323-7, R01-150-0180, R01-178-0610, R19H1732, R20-48-AD, R20-48-AGD, R32-9160, R3224-3, R323-29, R323-7, R400264, R908035P	Bolt - Hex HD 3/8-16 x 1-1/4	2	0.40	
75	R52-3090	R77-1080, R99-5654	Bracket - LH Rear Roller	1	26.05	
76	R3290-125		Screw - Set 1/4-20 x 5/16	2	0.83	
77	R52-3060	R77-1060, R99-5653	Bracket - RH Rear Roller	1	26.05	

All original equipment manufacturers names and part numbers are used for identification purposes only, and we are in no way implying that our products are original equipment parts. Prices subject to change without notice.



Replaces R&R Products Versa-Green

1860 Parts

Single Point Cutting Unit
Reel & Bedknife



Item No	R&R Part No.	OEM Part No.	Description	Qty Req	Price Each	Order Quantity
78	R453011	3256-24, 453011, R01-166-0100, R01-166-0120, R01-166-0270, R01-166-0500, R01-166-0600, R01-166-0620, R132-4593, R237-12, R24-10-AD, R24-11-AD, R24-11-BD, R24-12-AD, R24-12-BD, R30-9310, R32-8190, R3256-24, R3256-3, R3256-36, R3256-4, R47-9950	Washer - Flat 3/8 SAE Y/Zinc	4	0.11	
79	R52-3100		Bolt - Eccentric Shoulder LH	1	15.30	
80	R52-3110		Bolt - Shoulder HOC RH	1	14.70	
81	R285-14		Plug - Pipe Frame	2	2.35	
82	R322-5	322-5, R01-178-0508, R19H1905, R20-26-AD, R20-26-AGD, R30-9000, R400188, R513341, R519755, R908019P	Bolt - Hex HD 5/16-18 x 1	2	0.40	
83	R3255-8		Washer - Lock 5/16 Ext	2	0.08	
84	R32108-20		Screw - Flat HD Cntrsunk	2	0.62	
85	R3290-316		Bolt - Hex Tap 3/8-16 x 1-1/2	4	0.72	

All original equipment manufacturers names and part numbers are used for identification purposes only, and we are in no way implying that our products are original equipment parts. Prices subject to change without notice.



Replaces R&R Products Versa-Green

1860 Parts

*Single Point Cutting Unit
Reel & Bedknife*



Item No	R&R Part No.	OEM Part No.	Description	Qty Req	Price Each	Order Quantity
86	R3255-9	RF3077	Washer - Lock 3/8 Ext. Star	4	0.19	
87	R321-5	R321-31, R400110	Bolt - Hex HD 1/4-20 x 7/8	2	0.29	
88	R3256-22	R09061, R24-9-BD, R3-1032, R93-0954, R93-0989	Washer - Flat 1/4 Yellow	2	0.12	
89	R301504	R32127-24, R32146-17, R3296-16, R3296-42, R915661P, RM40333	Locknut - ESNA 1/4-20	2	0.18	
90	R66-7240		Bolt - Single Point Adjust.	2	7.90	

All original equipment manufacturers names and part numbers are used for identification purposes only, and we are in no way implying that our products are original equipment parts. Prices subject to change without notice.