

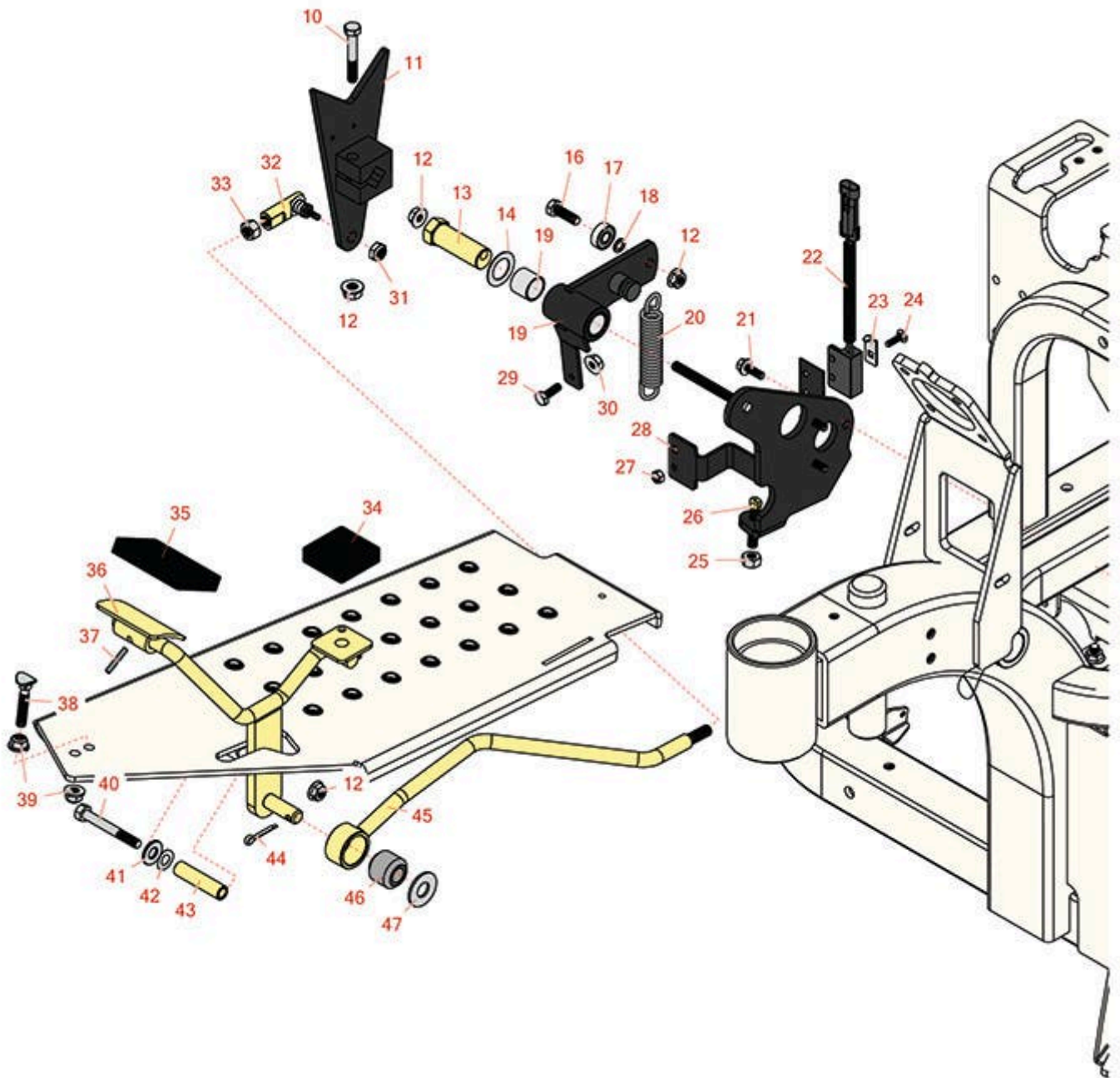


# Replaces R&R Products Sand Max 518

## Parts

*Traction Unit*

*Pump Control and Traction Pedal*



All original equipment manufacturers names and part numbers are used for identification purposes only, and we are in no way implying that our products are original equipment parts. Prices subject to change without notice.



# Replaces R&R Products Sand Max 518 Parts

*Traction Unit  
Pump Control and Traction Pedal*



Item No	R&R Part No.	OEM Part No.	Description	Qty Req	Price Each	Order Quantity
10	<b>R322-10</b>	R20-30-AD, R24-7180, R3223-6, R513347	Bolt - Hex HD 5/16-18 x 2	1	<b>0.65</b>	
11	<b>R112-6458-03</b>		Pump Lever Assy	1	<b>121.35</b>	
12	<b>R104-8300</b>	R119-4041	Locknut - 5/16-18 Flanged Y/Zinc	4	<b>0.47</b>	
13	<b>R76-8640</b>		Stud - Traction	1	<b>35.55</b>	
14	<b>R3-6498</b>	R47-8270	Washer - Thrust	1	<b>4.10</b>	
16	<b>R322-5</b>	322-5, R01-178-0508, R19H1905, R20-26-AD, R20-26-AGD, R30-9000, R400188, R513341, R519755, R908019P	Bolt - Hex HD 5/16-18 x 1	1	<b>0.40</b>	
17	<b>R251-259</b>	R251-307	Bearing - Ball	1	<b>11.25</b>	
18	<b>R75-5470</b>		Spacer - Bearing	1	<b>2.75</b>	
19	<b>R108-5493</b>		Arm Assy	1	<b>81.75</b>	
20	<b>R85-9030</b>		Spring-Extension - Stainless	1	<b>29.30</b>	
21	<b>R49-2040</b>	R32104-42, R32104-95, R32144-44	Bolt - Hex Washer 1/4-20 x 3/4	3	<b>0.72</b>	
22	<b>R105-0023</b>		Sensor - Proximity	1	<b>90.65</b>	
23	<b>R100-4872</b>	R104-7702	Plate-Switch - Neutral	1	<b>6.70</b>	
24	<b>R3229-20</b>		Screw - 3/16-24 x 3/4 Carr	1	<b>0.94</b>	
25	<b>R444754</b>	R000210	Locknut - 5/16-24 Center	1	<b>0.43</b>	

All original equipment manufacturers names and part numbers are used for identification purposes only, and we are in no way implying that our products are original equipment parts. Prices subject to change without notice.



# Replaces R&R Products Sand Max 518 Parts

*Traction Unit  
Pump Control and Traction Pedal*



Item No	R&R Part No.	OEM Part No.	Description	Qty Req	Price Each	Order Quantity
26	<b>R18-6380</b>		Pin - Adjustment Steering	1	<b>7.90</b>	
27	<b>R3296-2</b>	R32127-10, R9157404	Nut - #10 Lock	1	<b>0.94</b>	
28	<b>R108-5490-03</b>		Pump Plate Assy	1	<b>59.50</b>	
29	<b>R321-4</b>	400108, R01-150-1030, R01-178-0406, R20-3-AGD, R3222-1, R400108	Bolt - Hex HD 1/4-20 x 3/4	1	<b>0.52</b>	
30	<b>R3218-1</b>		Nut-Jam	1	<b>0.84</b>	
31	<b>R3296-6</b>	R01-192-0280, R32118-2, R32127-14, R32127-15, R32146-12, R32146-6, R3296-32	Locknut - 3/8-24 ESNA	1	<b>1.25</b>	
32	<b>R68-3840</b>		Joint- Ball - RH Thread	1	<b>23.60</b>	
33	<b>R3220-3</b>	R01-191-0624, R3290-149	Nut - Jam Ball Joint	1	<b>0.24</b>	
34	<b>R74-9110</b>		Rubber Foot Pad - Reverse	1	<b>9.30</b>	
35	<b>R74-9100</b>		Rubber Foot Pad - Forward	1	<b>10.95</b>	
36	<b>R108-5498-01</b>		Pedal Assy	1	<b>55.45</b>	
37	<b>R32121-45</b>	R32121-113, R32121-92	Pin - Spring Roll 5/32 x 1	1	<b>0.24</b>	
38	<b>R17-9420</b>	R17-9426, R49-6480	Bolt - Contour Plow Bolt	1	<b>3.45</b>	
39	<b>R445722</b>	R30-8980, R32128-2, R32128-20	Nut - Serrated Washer	2	<b>0.66</b>	

All original equipment manufacturers names and part numbers are used for identification purposes only, and we are in no way implying that our products are original equipment parts. Prices subject to change without notice.



# Replaces R&R Products Sand Max 518 Parts

*Traction Unit*

*Pump Control and Traction Pedal*



Item No	R&R Part No.	OEM Part No.	Description	Qty Req	Price Each	Order Quantity
40	<b>R322-14</b>	R01-150-0830, R01-178-0524, R30-8900	Bolt - Hex HD 5/16-18 x 3 GR5	1	<b>2.15</b>	
41	<b>R310266</b>	3256-3, R09056, R452004	Washer - Flat 5/16 USS	1	<b>0.23</b>	
42	<b>R3290-477</b>	R108473	Washer - Spring Wave	1	<b>0.75</b>	
43	<b>R85-8960</b>		Spacer	1	<b>4.50</b>	
44	<b>R3272-10</b>	R01-151-0120	Pin - Cotter 1/8 x 3/4	1	<b>0.13</b>	
45	<b>R110-8160</b>		Rod Assy	1	<b>78.55</b>	
46	<b>R23-2270</b>		Bushing-Rubber	1	<b>24.70</b>	
47	<b>R106-9888</b>		Washer-Flat	1	<b>0.73</b>	

All original equipment manufacturers names and part numbers are used for identification purposes only, and we are in no way implying that our products are original equipment parts. Prices subject to change without notice.