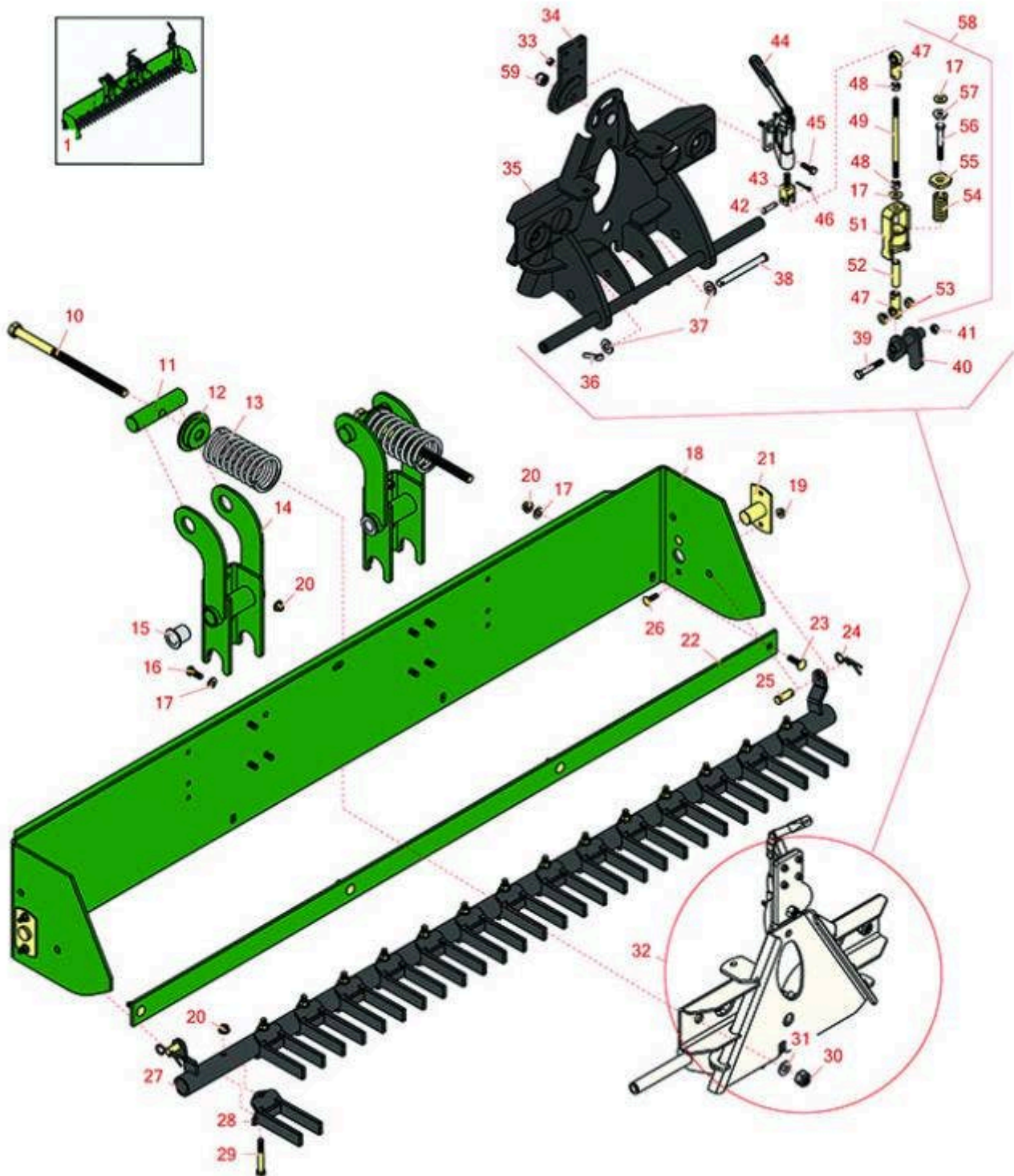




Replaces R&R Products Sand Max 518 Parts

Fast Connect Finish Grader



All original equipment manufacturers names and part numbers are used for identification purposes only, and we are in no way implying that our products are original equipment parts. Prices subject to change without notice.



Replaces R&R Products Sand Max 518 Parts

Fast Connect Finish Grader



Item No	R&R Part No.	OEM Part No.	Description	Qty Req	Price Each	Order Quantity
---------	--------------	--------------	-------------	---------	------------	----------------

Complete Finish Grader Attachment Assembly

1	R151095		Finish Grader with Fast Connect Hitch - Green	0	3090.25	
---	----------------	--	---	---	----------------	--

Tech Note: Sold with Fast Connect Hitch Assembly:

Other Parts Available

10	R23-2770		Rod - Actuating	2	60.95	
11	R23-2740G		Pin - Actuating - Green	2	52.65	
12	R108-2288G		Support- Spring - Green	2	28.50	
13	R20-9420-01	R01-261-0600, R20-9420	Spring - Compression	2	55.95	
14	R112-1400G		Pivot Assy	2	168.80	
15	R95-3577		Bushing	4	7.50	
16	R323-6	323-6, R01-150-0010, R01-178-0608, R20-47-AD, R20-47-AGD, R3224-2, R49-3510, R908034P, R908332	Bolt - Hex HD 3/8-16 x 1 GR5 YZ	8	0.59	

All original equipment manufacturers names and part numbers are used for identification purposes only, and we are in no way implying that our products are original equipment parts. Prices subject to change without notice.



Replaces R&R Products Sand Max 518 Parts

Fast Connect Finish Grader



Item No	R&R Part No.	OEM Part No.	Description	Qty Req	Price Each	Order Quantity
17	R453011	3256-24, 453011, R01-166-0100, R01-166-0120, R01-166-0270, R01-166-0500, R01-166-0600, R01-166-0620, R132-4593, R237-12, R24-10-AD, R24-11-AD, R24-11-BD, R24-12-AD, R24-12-BD, R30-9310, R32-8190, R3256-24, R3256-3, R3256-36, R3256-4, R47-9950	Washer - Flat 3/8 SAE Y/Zinc	12	0.11	
18	R108-2928G		Box Assy	1	603.05	
19	R104-8300	R119-4041	Locknut - 5/16-18 Flanged Y/Zinc	4	0.47	
20	R104-8301	R109-6658, R133-7570	Locknut - 3/8-16 Nylon Flanged	27	0.84	
21	R110-1376		Pivot Pin Assy	2	19.40	
22	R23-2790G		Blade - Scraper	1	199.25	
23	R3231-25	R01-173-0610, R30-9970, R3231-3, R900064P	Bolt - Carriage 3/8-16 x 1-1/4	4	0.66	
24	R3290-355	R01-159-0050, R58-5370	Pin - Bridge - Snap	2	2.35	
25	R283-60		Pin-Clevis	2	4.80	

All original equipment manufacturers names and part numbers are used for identification purposes only, and we are in no way implying that our products are original equipment parts. Prices subject to change without notice.



Replaces R&R Products Sand Max 518 Parts

Fast Connect Finish Grader



Item No	R&R Part No.	OEM Part No.	Description	Qty Req	Price Each	Order Quantity
26	R3230-2	3230-2, R01-173-0508, R25-25-AGD, R513624, R513633, R513635, R900038P	Bolt - Carriage	4	1.05	
27	R110-1395-03		Tool Bar Assy	1	355.20	
28	R110-0259-03		Scarifier Tine	15	45.05	
29	R323-13	R01-150-1020, R01-178-0622, R20-54-AD, R20-54-AGD, R513366	Bolt - Hex HD 3/8-16 x 2-3/4 GR5	15	1.55	
30	R3296-53	R444752, RU44915	Locknut - 5/8-11 ESNA Yellow	2	1.85	
31	R150346		Washer - Thrust Plated 1-3/4x.750	2	2.35	
32	R151096		Fast Connect Hitch to Fit Finish Grader - Black	1	775.45	
33	R32153-3	R119-4038, R22-12-AJFD, R32127-35, R32146-5, R3296-18, R3296-31, RJ317000	Locknut - 5/16-18 ESNA Zinc	4	0.62	
34	R151073		Adapter Plate	1	12.95	
35	R112-1432		Adapter Assy	1	490.55	
36	R3272-11	R01-151-0010, R01-151-0040, R28-18-D, R28-28-D, R3211-72	Pin - Cotter	1	0.70	

All original equipment manufacturers names and part numbers are used for identification purposes only, and we are in no way implying that our products are original equipment parts. Prices subject to change without notice.



Replaces R&R Products Sand Max 518 Parts

Fast Connect Finish Grader



Item No	R&R Part No.	OEM Part No.	Description	Qty Req	Price Each	Order Quantity
37	R3256-26	3256-26, R01-166-0540, R01-166-0820, R17-2530, R24-13-BD, R30-8570, R356206, R48-9390	Washer - 1/2 in	2	0.41	
38	R283-83	283-83, R42194, R93-5343	Pin - Clevis	1	5.15	
39	R323-11	R01-150-1440, R01-178-0618, R20-52-AD, R3224-7	Bolt - 3/8-16 x 2 1/4 GR5	1	0.84	
40	R110-8154		Latch Assy	1	25.60	
41	R3296-44		Nut - 3/8-16 Heavy Jam ESNA Lock	1	2.45	
42	R283-61	R86-2140	Pin - Clevis 5/16 x 1-1/8	1	0.78	
43	R151072		Adapter - Link Assy	1	14.55	
44	R151071		Clamp - Toggle	1	85.20	
45	R322-5	322-5, R01-178-0508, R19H1905, R20-26-AD, R20-26-AGD, R30-9000, R400188, R513341, R519755, R908019P	Bolt - Hex HD 5/16-18 x 1	4	0.40	
46	R3272-10	R01-151-0120	Pin - Cotter 1/8 x 3/4	1	0.13	
47	R92-7008		Rod End - Female	2	35.95	
48	R3220-3	R01-191-0624, R3290-149	Nut - Jam Ball Joint	2	0.24	

All original equipment manufacturers names and part numbers are used for identification purposes only, and we are in no way implying that our products are original equipment parts. Prices subject to change without notice.



Replaces R&R Products Sand Max 518 Parts

Fast Connect Finish Grader



Item No	R&R Part No.	OEM Part No.	Description	Qty Req	Price Each	Order Quantity
49	R110-8108		Rod - Link	1	15.65	
51	R110-8111-01		Yoke Assy	1	49.10	
52	R110-8110		Spacer	1	7.30	
53	R110-8116		Spacer - Link	2	4.35	
54	R66-7230		Spring - Compression	1	4.80	
55	R110-8114		Washer	1	6.45	
56	R3211-12		Bolt - Hx HD 3/8-24	1	2.55	
57	R32128-12		Locknut - 3/8-24 Flanged Top Lock	1	1.45	
58	R151075		Link Assy - Fast Connect Hitch	1	147.35	
<i>Tech Note: Includes 47-57:</i>						
59	RF5003	3296-23, R32127-29, R32131-5, R32132-5, R3296-23, R64229-05	Locknut - ESNA 1/2-13	1	0.78	

All original equipment manufacturers names and part numbers are used for identification purposes only, and we are in no way implying that our products are original equipment parts. Prices subject to change without notice.