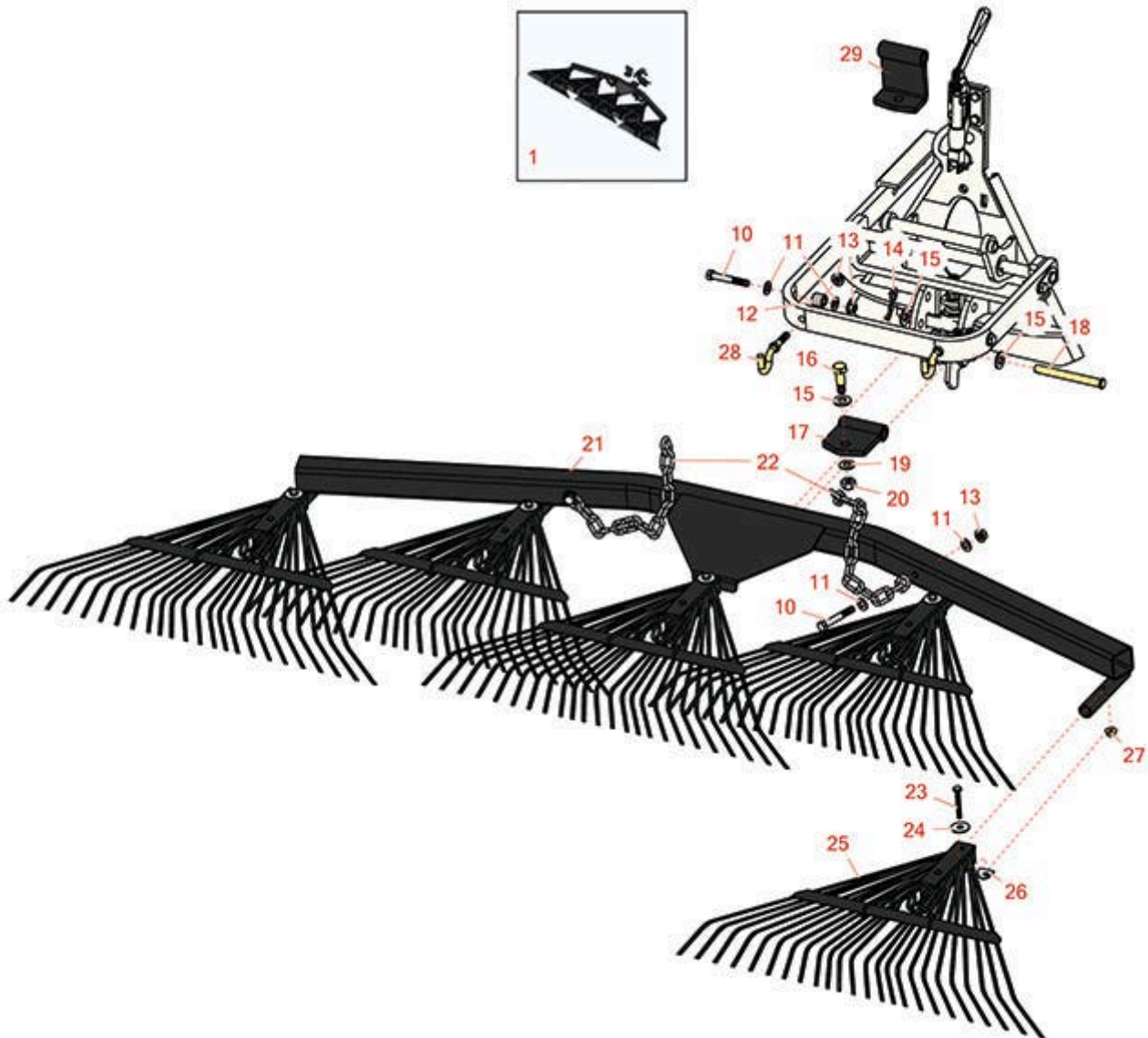




Replaces R&R Products Sand Max 518 Parts

Fast Attach Spring Rake



All original equipment manufacturers names and part numbers are used for identification purposes only, and we are in no way implying that our products are original equipment parts. Prices subject to change without notice.



Replaces R&R Products Sand Max 518 Parts

Fast Attach Spring Rake



Item No	R&R Part No.	OEM Part No.	Description	Qty Req	Price Each	Order Quantity
---------	--------------	--------------	-------------	---------	------------	----------------

Complete Spring Rake Assembly

1	R151085	R08752	Spring Rake to Fit Fast Connect Hitch	0	629.75	
---	----------------	--------	---------------------------------------	---	---------------	--

Tech Note: Use with R151080 Tooth Rake Assy:

Other Parts Available

10	R101526	321-11, R01-150-0970, R01-178-0620, R20-53-AGD, R3224-8, R323-12, R323-31, R323-47	Bolt - Hex HD 3/8-16 x 2-1/2 GR5	4	0.91	
----	----------------	---	----------------------------------	---	-------------	--

11	R453011	3256-24, 453011, R01-166-0100, R01-166-0120, R01-166-0270, R01-166-0500, R01-166-0600, R01-166-0620, R132-4593, R237-12, R24-10-AD, R24-11-AD, R24-11-BD, R24-12-AD, R24-12-BD, R30-9310, R32-8190, R3256-24, R3256-3, R3256-36, R3256-4, R47-9950	Washer - Flat 3/8 SAE Y/Zinc	8	0.11	
----	----------------	---	------------------------------	---	-------------	--

12	R98-8895		Spacer	2	14.55	
----	-----------------	--	--------	---	--------------	--

13	R104-8301	R109-6658, R133-7570	Locknut - 3/8-16 Nylon Flanged	4	0.84	
----	------------------	-------------------------	--------------------------------	---	-------------	--

All original equipment manufacturers names and part numbers are used for identification purposes only, and we are in no way implying that our products are original equipment parts. Prices subject to change without notice.



Replaces R&R Products Sand Max 518 Parts

Fast Attach Spring Rake



Item No	R&R Part No.	OEM Part No.	Description	Qty Req	Price Each	Order Quantity
14	R3272-12	3272-12, R01-151-0090, R28-19-D	Pin - Cotter 1/8 x 1-1/4	1	0.11	
15	R3256-26	3256-26, R01-166-0540, R01-166-0820, R17-2530, R24-13-BD, R30-8570, R356206, R48-9390	Washer - 1/2 in	3	0.41	
16	R80-2050	80-2050	Bolt - Shoulder	1	15.35	
17	R112-1428-03		Pivot Assy	1	38.90	
18	R283-83	283-83, R42194, R93-5343	Pin - Clevis	1	5.15	
19	R187-0	3256-25, R3256-25, R7-0032	Washer - Flat 7/16 SAE	1	0.22	
20	R3296-48	3296-48, R119-4039, R32146-7, R3296-34	Locknut - 7/16-14 ESNA	1	0.55	
21	R108-3198-03		Hanger Assy	1	313.10	
22	R84-2452	84-2452	Chain - 14 Link, Str	2	7.95	
23	R3234-34	323-12	Bolt - Hex Washer 1/4 x 2	5	0.67	
24	R3256-35		Washer - Flat	5	0.59	
25	R85-0360	85-0360	Rake-Spring	5	33.55	
26	R117-4687	117-4687	Washer - Cupped	5	1.75	
27	R104-8300	R119-4041	Locknut - 5/16-18 Flanged Y/Zinc	5	0.47	

All original equipment manufacturers names and part numbers are used for identification purposes only, and we are in no way implying that our products are original equipment parts. Prices subject to change without notice.



Replaces R&R Products Sand Max 518 Parts

Fast Attach Spring Rake



Item No	R&R Part No.	OEM Part No.	Description	Qty Req	Price Each	Order Quantity
28	R80-2040	R84-2630	Hook	2	11.15	
29	R108-9429-03		Pivot Assy	1	45.35	

All original equipment manufacturers names and part numbers are used for identification purposes only, and we are in no way implying that our products are original equipment parts. Prices subject to change without notice.