

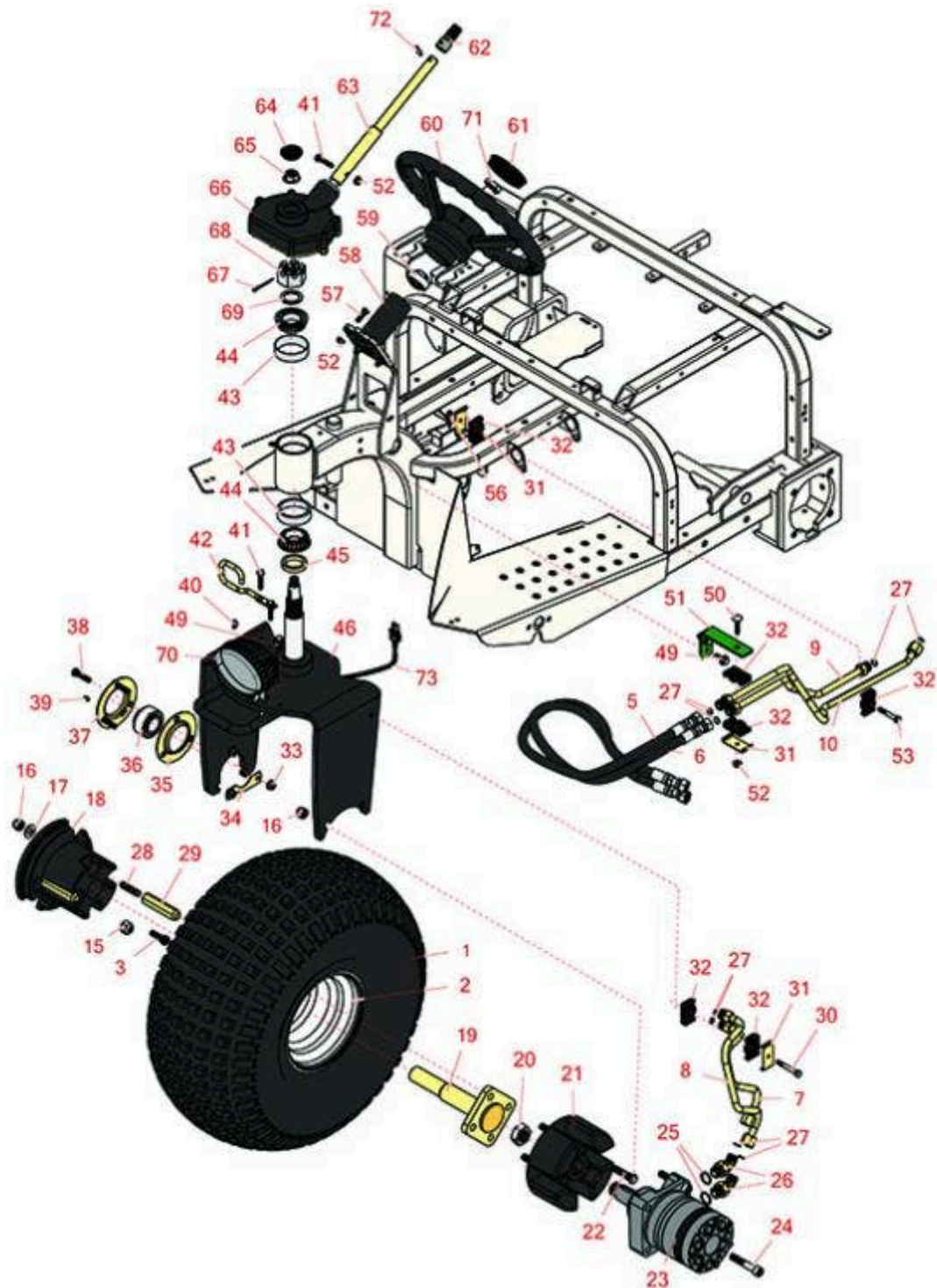


Replaces R&R Products Sand Max 516

Parts

Traction Unit

Front Wheel & Steering



All original equipment manufacturers names and part numbers are used for identification purposes only, and we are in no way implying that our products are original equipment parts. Prices subject to change without notice.



Replaces R&R Products Sand Max 516

Parts

Traction Unit

Front Wheel & Steering



Item No	R&R Part No.	OEM Part No.	Description	Qty Req	Price Each	Order Quantity
---------	--------------	--------------	-------------	---------	------------	----------------

Hoses

1	RCT537050	R546547	Tire - 22x11.00-8 Nhs (2 Ply) Carlisle Knobby	1	112.15	
<i>Detail Description: Elevate your off-road adventures with the Carlisle Knobby tire. This tire offers a unique design with options available in both solid and dimple tread patterns. Whether you're tackling rugged trails or navigating through challenging terrain, the Carlisle Knobby tire delivers maximum performance and traction. It is specially designed for ATVs and golf carts, providing the reliability and durability you need for your outdoor adventures. Upgrade your ATV or golf cart with the Carlisle Knobby tire and experience the difference it makes in your outdoor excursions. Maximize your traction, durability, and versatility. Buy the Carlisle Knobby tire today and unleash the full potential of your off-road adventures.:</i>						
2	R94-6116	R114-4643, R242-53, R242-86, R46-4810	Rim - 8x8.5 White	1	70.60	
3	R232-24	R232-35, R341680, R363233, R814687	Stem - Valve w/ Cap	1	3.45	

Tires

5	R108-8433		Hydraulic Hose Assy	1	65.95	
6	R110-6303		Hydraulic Hose Assy	1	78.45	
7	R108-8431		Tube Assy	1	39.50	
8	R108-8432	R108-8432-01	Tube Assy	1	43.35	
9	R108-8411		Tube Assy	1	51.25	
10	R108-8409		Tube Assy	1	51.70	

Other Parts Available

15	R242-50		Nut - 1/2-20 Wheel	2	1.60	
----	----------------	--	--------------------	---	-------------	--

All original equipment manufacturers names and part numbers are used for identification purposes only, and we are in no way implying that our products are original equipment parts. Prices subject to change without notice.



Replaces R&R Products Sand Max 516

Parts

Traction Unit

Front Wheel & Steering



Item No	R&R Part No.	OEM Part No.	Description	Qty Req	Price Each	Order Quantity
16	RF5003	3296-23, R32127-29, R32131-5, R32132-5, R3296-23, R64229-05, RZS04021-07	Locknut - ESNA 1/2-13	4	0.82	
17	R87-7270-01	R87-7270	Washer - Flat 1/2	2	0.30	
18	R110-6312-03		Weight	1	187.60	
19	R110-6314		Spindle	1	92.20	
20	R26-3790		Nut - Hex - Wheel Motor 1-20	1	15.50	
21	R110-6310		Front Wheel Hub Assy	1	183.25	
22	R85-6540		Stud - Drive 1/2-20 x 2	4	8.35	
23	R108-2948		Hydraulic Motor - Wheel	1	1351.30	
24	R3274-93		Bolt - Soc HD Cap	4	6.60	
25	R237-80	R327-80	O-Ring	2	1.95	
26	R340-89		Hydraulic Fitting - 45 Deg	2	23.50	
27	R237-30	R23-6320	O-Ring - Seal	5	0.82	
28	R110-6311		Stud - Hardened	2	7.55	
29	R107-3399		Adapter-Weight, Wheel	2	21.95	
30	R322-12	322-12, R01-150-0730, R01-178-0520	Bolt - 5/16-18 x 2 1/2 Hx HD	1	2.45	
31	R69-9760		Cover Plate - Hyd Line Clamp	3	3.75	
32	R56-7976		Clamp - Tube	6	7.15	
33	R104-8301	R109-6658, R133-7570	Locknut - 3/8-16 Nylon Flanged	3	0.88	

All original equipment manufacturers names and part numbers are used for identification purposes only, and we are in no way implying that our products are original equipment parts. Prices subject to change without notice.



Replaces R&R Products Sand Max 516 Parts

*Traction Unit
Front Wheel & Steering*



Item No	R&R Part No.	OEM Part No.	Description	Qty Req	Price Each	Order Quantity
34	R88-8350		Tab-Bearing	1	4.90	
35	R85-8950		Flange - Ball Bearing	1	6.50	
36	R251-352		Bearing	1	23.80	
37	R85-8940		Flange - w/Zerk	1	5.45	
38	R400264	323-7, R01-150-0180, R01-178-0610, R19H1732, R20-48-AD, R20-48-AGD, R32-9160, R3224-3, R323-29, R323-7, R400264, R908035P	Bolt - Hex HD 3/8-16 x 1-1/4	3	0.42	
39	R302-5	R173-0, R21-6010, R255825, R302-37, R302-47, R302-57, R302-58, R302-6, R31-0300, R32-9660, R471214, R471223, R471226, R60-0800, R62-3880, R92-4181, RJD7797, RJD7842, RJD7844, RM0004, RZS48114-04	Fitting - Grease	2	0.30	
40	R463017	R2119-561, R31-4400, R3257-5	Key - Woodruff	1	0.65	

All original equipment manufacturers names and part numbers are used for identification purposes only, and we are in no way implying that our products are original equipment parts. Prices subject to change without notice.



Replaces R&R Products Sand Max 516

Parts

Traction Unit

Front Wheel & Steering



Item No	R&R Part No.	OEM Part No.	Description	Qty Req	Price Each	Order Quantity
41	R322-7	R01-150-0750, R01-150-0760, R01-178-0512, R20-28-AD, R20-28-AGD, R3223-4	Bolt - Hex HD 5/16-18 x 1-1/2	3	0.65	
42	R108-8435		Guide-Hose	1	10.30	
43	R107-7590		Tapered Bearing Cup	2	12.30	
44	R107-7589		Tapered Bearing Cone - w/Seal	2	34.80	
45	R108-5432		Spacer-Bearing	1	16.10	
46	R107-3543B		Fork Assy - Black	1	456.05	
49	R32144-14	R32104-32, R32104-49	Bolt - Hex Washer 5/16-18 x 5/8	4	2.60	
50	R3230-6		Bolt - Carraige	1	1.75	
51	R108-8455G		Bracket - Clamp - Green	1	7.60	
52	R104-8300	R119-4041	Locknut - 5/16-18 Flanged Y/Zinc	8	0.49	
53	R322-10	R20-30-AD, R24-7180, R3223-6, R513347	Bolt - Hex HD 5/16-18 x 2	1	0.68	
56	R3296-29	3296-29, R1-804256, R915662P	Locknut - 5/16-18 ESNA	1	3.10	

All original equipment manufacturers names and part numbers are used for identification purposes only, and we are in no way implying that our products are original equipment parts. Prices subject to change without notice.



Replaces R&R Products Sand Max 516 Parts

*Traction Unit
Front Wheel & Steering*



Item No	R&R Part No.	OEM Part No.	Description	Qty Req	Price Each	Order Quantity
57	R322-5	322-5, R01-178-0508, R19H1905, R20-26-AD, R20-26-AGD, R30-9000, R400188, R513341, R519755, R908019P	Bolt - Hex HD 5/16-18 x 1	4	0.42	
58	R107-3540-03		Tube Assy	1	92.15	
59	R106-8448		Bearing	1	51.40	
60	R150263	R150255	Wheel - Steering 14 in	1	131.10	
61	R150267		Cap - Steering Wheel	1	16.45	
62	R150922		Splined Shaft - Steering	1	64.80	
63	R150865		Shaft - Steering	1	70.70	
64	R107-3532		Grommet	1	4.60	
65	R32128-54		Nut - 5/8-18 Hex Serr Flanged	1	4.95	
66	R107-3526		Steering Gearbox Assy	1	678.80	
67	R3272-37		Pin - Cotter 1/4 x 2-1/2	1	0.57	
68	R32136-9		Nut - 1-1/4-12 Slotted	1	6.65	
69	R110-8195		Washer-Steering	1	11.15	
70	R151712	R108-6471, R112-9177, R94-9024	LED Oval Work Light - 12 LED 30w	1	78.25	
71	R107-2561	R47-6990, R47-7090	Nut - Steering Column	1	18.95	
72	R98-0973		Pin - Grooved 1/4 x 1 - 1/8	1	0.88	

All original equipment manufacturers names and part numbers are used for identification purposes only, and we are in no way implying that our products are original equipment parts. Prices subject to change without notice.



Replaces R&R Products Sand Max 516 Parts

*Traction Unit
Front Wheel & Steering*



Item No	R&R Part No.	OEM Part No.	Description	Qty Req	Price Each	Order Quantity
73	R110-1365		Wiring Harness - Headlight	1	138.80	

All original equipment manufacturers names and part numbers are used for identification purposes only, and we are in no way implying that our products are original equipment parts. Prices subject to change without notice.