

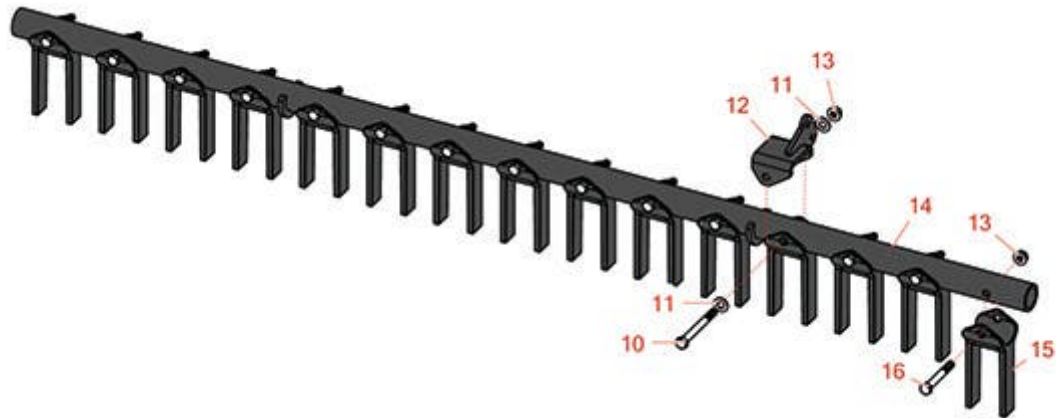


# Replaces R&R Products Sand Max 416

## Parts

*Attachments*

*Scarifier Tine Toolbar*



All original equipment manufacturers names and part numbers are used for identification purposes only, and we are in no way implying that our products are original equipment parts. Prices subject to change without notice.



# Replaces R&R Products Sand Max 416 Parts

Attachments

Scarifier Tine Toolbar



Item No	R&R Part No.	OEM Part No.	Description	Qty Req	Price Each	Order Quantity
10	<b>R323-14</b>	323-14, R01-150-0840, R01-178-0624, R20-55-AD, R21-196-AMD, R30-8750, R30-8970, R3224-10	Bolt - Hex HD 3/8-16 x 3	1	<b>2.05</b>	
11	<b>R453011</b>	3256-24, 453011, R01-166-0100, R01-166-0120, R01-166-0270, R01-166-0500, R01-166-0600, R01-166-0620, R132-4593, R237-12, R24-10-AD, R24-11-AD, R24-11-BD, R24-12-AD, R24-12-BD, R30-9310, R32-8190, R3256-24, R3256-3, R3256-36, R3256-4, R47-9950	Washer - Flat 3/8 SAE Y/Zinc	2	<b>0.12</b>	
12	<b>R112-6468-03</b>		Bracket Assy - Tool Bar	1	<b>31.95</b>	
13	<b>R3296-39</b>	3296-39, R32127-25, R32128-36, R3296-17, R3296-22, R915663P, R99-7443	Locknut - 3/8-16 Nylon	15	<b>1.50</b>	
14	<b>R108-4527-03</b>		Tool Bar Assy	1	<b>355.15</b>	
15	<b>R110-0259-03</b>		Scarifier Tine	15	<b>45.05</b>	

All original equipment manufacturers names and part numbers are used for identification purposes only, and we are in no way implying that our products are original equipment parts. Prices subject to change without notice.



# Replaces R&R Products Sand Max 416 Parts

*Attachments*  
*Scarifier Tine Toolbar*



Item No	R&R Part No.	OEM Part No.	Description	Qty Req	Price Each	Order Quantity
16	R400274	R01-178-0626, R112-7161, R3224-11, R323-20	Bolt - Hex HD 3/8-16 x 2-1/2 GR5	14	1.60	

All original equipment manufacturers names and part numbers are used for identification purposes only, and we are in no way implying that our products are original equipment parts. Prices subject to change without notice.