

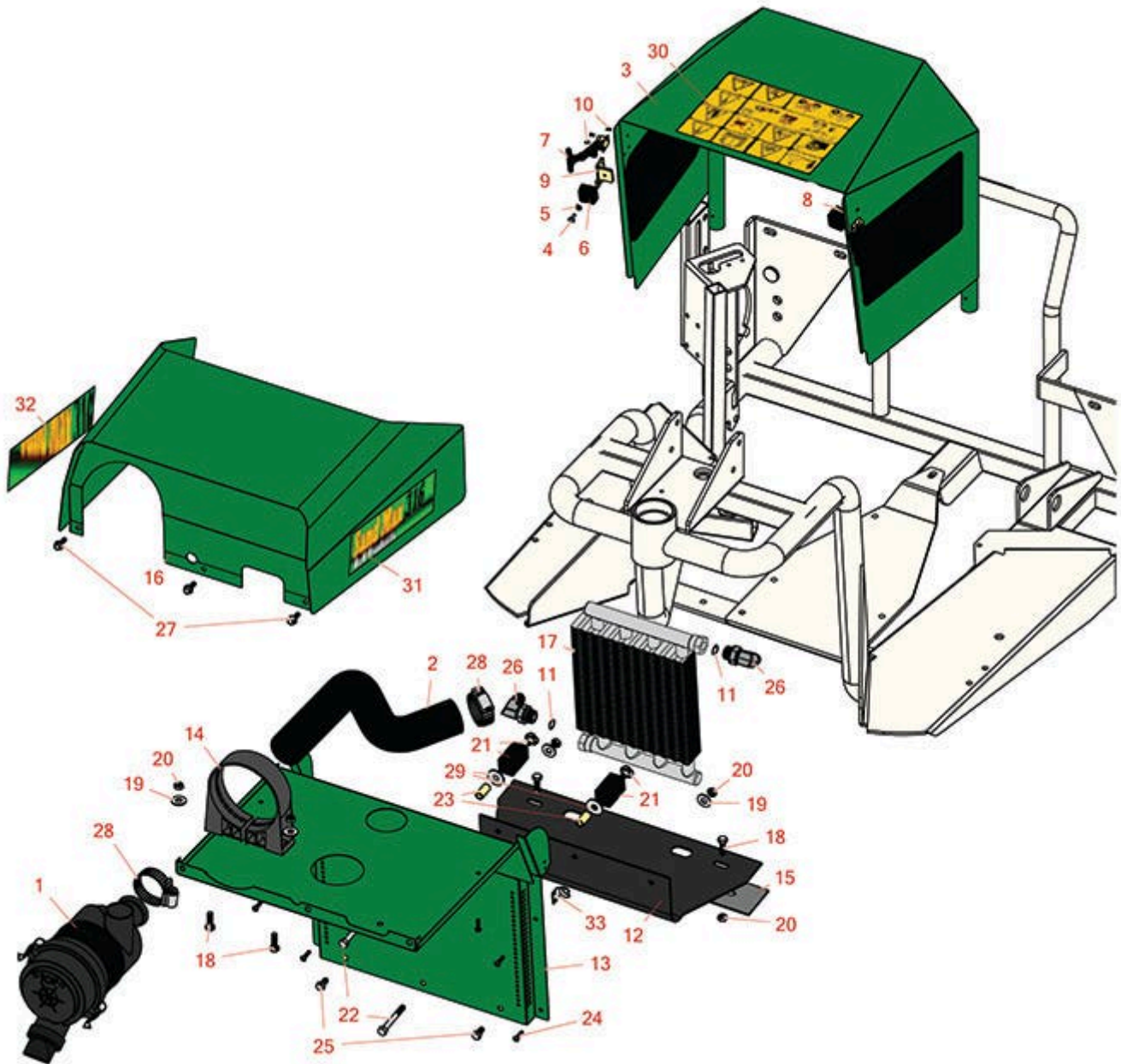


# Replaces R&R Products Sand Max 316

## Parts

*Traction Unit*

*Oil Cooler & Front Shroud*



All original equipment manufacturers names and part numbers are used for identification purposes only, and we are in no way implying that our products are original equipment parts. Prices subject to change without notice.



# Replaces R&R Products Sand Max 316

## Parts

*Traction Unit*

*Oil Cooler & Front Shroud*



Item No	R&R Part No.	OEM Part No.	Description	Qty Req	Price Each	Order Quantity
<b>Filters</b>						
1	R93-2190		Air Cleaner Assy	1	94.15	
<b>Hoses</b>						
2	R95-0582		Hose - Formed	1	44.50	
<b>Other Parts Available</b>						
3	R95-0610		Engine Cover Assy	1	322.95	
4	R3269-28		Rivet - Pop Grass Basket	2	0.41	
5	R3256-14	R24-7-BD, R297-3, R32125-2, R3256-51, R51-2170	Washer - 10 Flat	2	0.36	
6	R94-1392		Pad-Rubber	2	4.35	
7	R59-9740	R249-39, R60-8660, R60-8670	Flex Draw Latch Assy	2	21.40	
8	R95-0611		Bracket-RH	1	17.60	
9	R95-0612		Bracket-LH	1	17.60	
10	R3269-8		Rivet-Blind	6	0.54	
11	R237-79		O-Ring	2	1.60	
12	R95-5826	R95-0583	Shield-Rubber	1	26.70	
13	R95-5817	R95-0638	Front Shield Assy	1	236.65	
14	R95-5806		Bracket-Mounting	1	19.80	
15	R95-0620-01	R95-0620	Strip-Retainer	1	13.25	
16	R99-1644		Dash Shroud Assy	1	225.20	

All original equipment manufacturers names and part numbers are used for identification purposes only, and we are in no way implying that our products are original equipment parts. Prices subject to change without notice.



# Replaces R&R Products Sand Max 316 Parts

*Traction Unit  
Oil Cooler & Front Shroud*



Item No	R&R Part No.	OEM Part No.	Description	Qty Req	Price Each	Order Quantity
17	R92-8997		Cooler - Hyd Oil	1	307.95	
18	R322-5	322-5, R01-178-0508, R19H1905, R20-26-AD, R20-26-AGD, R30-9000, R400188, R513341, R519755, R908019P	Bolt - Hex HD 5/16-18 x 1	4	0.42	
19	R453009	3256-3, R01-166-0400, R24-10-BD, R24-9-AD, R24H1136, R32-9650, R3256-2, R3256-23, R3256-67, R3290-217, R3556-3, R4-2390, R452006, R7-0152	Washer - Flat 5/16 SAE	4	0.14	
20	R3296-29	3296-29, R1-804256, R915662P	Locknut - 5/16-18 ESNA	6	3.10	
21	R85-9550		Clamp - Rubber	2	9.95	
22	R322-14	R01-150-0830, R01-178-0524, R30-8900	Bolt - Hex HD 5/16-18 x 3 GR5	0	2.30	
23	R95-5807		Spacer	2	5.15	
24	R3274-31	R3274-68, R46-8560	Screw - Button HD Soc CS 1/4-20 x 5/8	6	0.79	
25	R322-2	R513338P	Bolt - Hex HD 5/16-18 x 5/8	2	0.53	
26	R353-371		Fitting - Elbow - 90	2	21.20	

All original equipment manufacturers names and part numbers are used for identification purposes only, and we are in no way implying that our products are original equipment parts. Prices subject to change without notice.



# Replaces R&R Products Sand Max 316 Parts

*Traction Unit  
Oil Cooler & Front Shroud*



Item No	R&R Part No.	OEM Part No.	Description	Qty Req	Price Each	Order Quantity
27	<b>R3234-33</b>		Bolt - 1/4-20 x 3/4 Serr Hex Flanged	3	<b>0.54</b>	
28	<b>R2412-130</b>		Clamp - Hose 1 5/16-2 1/2	2	<b>3.35</b>	
28	<b>RG132</b>		Clamp - Hose 1.56-2.5 Box/10	2	<b>17.10</b>	
29	<b>R3256-82</b>	3256-82	Washer - Flat	2	<b>0.57</b>	
30	<b>R92-8985</b>		Decal-Operating	1	<b>19.45</b>	
31	<b>R150566</b>		Decal - LH - RSM316	1	<b>21.40</b>	
32	<b>R150567</b>		Decal - RH - RSM316	1	<b>21.40</b>	
33	<b>R249-40</b>		Keeper - Draw Latch	2	<b>6.65</b>	

All original equipment manufacturers names and part numbers are used for identification purposes only, and we are in no way implying that our products are original equipment parts. Prices subject to change without notice.