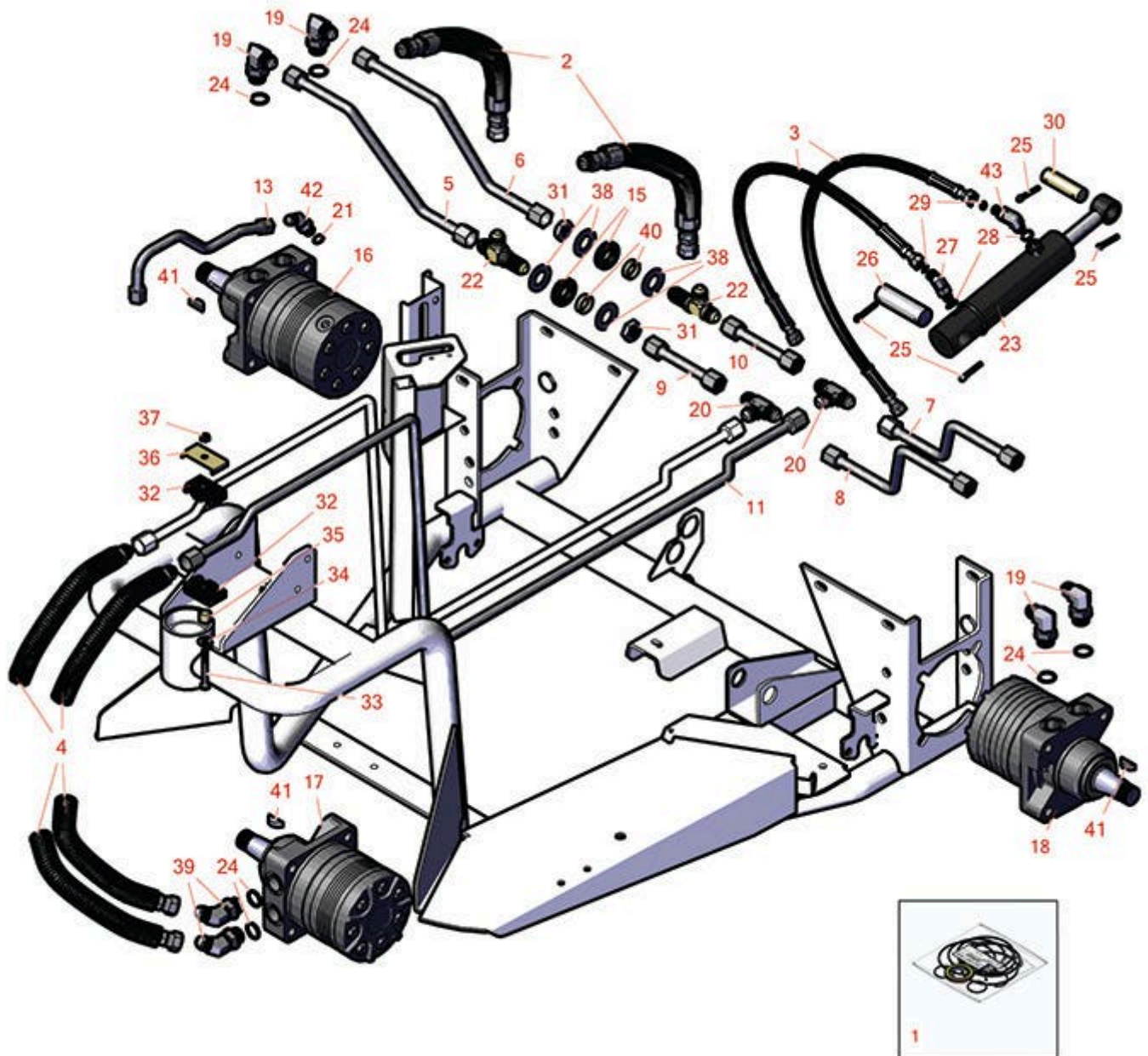




Replaces R&R Products Sand Max 316

Parts

Traction Unit
Hydraulic System



All original equipment manufacturers names and part numbers are used for identification purposes only, and we are in no way implying that our products are original equipment parts. Prices subject to change without notice.



Replaces R&R Products Sand Max 316

Parts

Traction Unit
Hydraulic System



Item No	R&R Part No.	OEM Part No.	Description	Qty Req	Price Each	Order Quantity
---------	--------------	--------------	-------------	---------	------------	----------------

Overhaul Kits

1	R76-0800	R100-6131, R94-8178, RTCA18042	Seal Kit - Hyd Wheel Motor	1	58.25	
---	----------	--------------------------------------	----------------------------	---	-------	--

Hoses

2	R95-0595		Hose- Assy	2	67.15	
3	R75-6200		Hydraulic Hose Assy	2	36.70	
4	R51-0600		Hydraulic Hose Assy	2	40.65	
5	R95-0564		Tube-RH, Front	1	32.50	
6	R95-0559		Tube-RH, Rear	1	32.50	
7	R150911		Tube - RH Rear	1	33.55	
8	R150917		Tube - RH Front	1	33.55	
9	R150918		Tube - LH Front	1	49.70	
10	R150912		Tube - LH Rear	1	49.70	
11	R95-0563		Tube-LH	1	68.65	
13	R95-0575		Tube-Valve, Shuttle	1	33.45	

Other Parts Available

15	R240-5		Grommet - Rubber	2	8.30	
16	R75-9840	R49-8600, R49-8630	Hydraulic Motor - RH Rear	1	815.75	
17	R75-9830	R49-8620	Hydraulic Motor - Front	1	1113.70	
18	R75-9831	R49-8621	Hydraulic Motor - LH Rear	1	815.75	
19	R353-426		Fitting - 90 Deg	4	21.40	

All original equipment manufacturers names and part numbers are used for identification purposes only, and we are in no way implying that our products are original equipment parts. Prices subject to change without notice.



Replaces R&R Products Sand Max 316

Parts

*Traction Unit
Hydraulic System*



Item No	R&R Part No.	OEM Part No.	Description	Qty Req	Price Each	Order Quantity
20	R150910		Hydraulic Fitting - 1/2 T	2	14.40	
21	R237-42	R31-4160, R339897	O-Ring	1	0.84	
22	R95-0577		Fitting - Bulkhead	2	33.15	
23	R83-7000	R27-2510, R43-5260, R68-9700, R74-3300	Hydraulic Cylinder	1	239.95	
24	R237-80	R327-80	O-Ring	6	1.95	
25	R460050	R01-151-0060, R3272-23	Pin - Cotter 3/16 x 1-1/4	4	0.27	
26	R18-7160		Pin - Cylinder	1	25.70	
27	R340-103	R340-137	Hydraulic Fitting - 45 Deg	2	19.10	
28	R237-22	R107-8844, R232-72, R237-78	O-Ring	2	0.65	
29	R237-21		O-Ring	2	0.49	
30	R18-7310		Pin - Cylinder	1	16.15	
31	R95-0642		Locknut - Bulkhead	2	3.25	
32	R56-7976		Clamp - Tube	2	7.15	
33	R321-18	R321-45	Hex Bolt 1/4-20 x 2 1/4	1	1.35	
34	R3256-78		Washer - Flat	1	1.30	
35	R52-2480		Spacer - Wheel	1	6.75	
36	R69-9760		Cover Plate - Hyd Line Clamp	1	3.75	
37	R3296-8	R32127-16, R352-86	Locknut - 1/4-20 Heavy Duty	1	0.55	

All original equipment manufacturers names and part numbers are used for identification purposes only, and we are in no way implying that our products are original equipment parts. Prices subject to change without notice.



Replaces R&R Products Sand Max 316 Parts

*Traction Unit
Hydraulic System*



Item No	R&R Part No.	OEM Part No.	Description	Qty Req	Price Each	Order Quantity
38	R69-8930		Washer	4	1.85	
39	R353-427		Fitting - 45 Deg	2	21.20	
40	R69-8960		Spacer	2	5.95	
41	R3257-42		Key - Woodruff 5/16 x 1	3	2.90	
42	R353-212	R30-6430, R353-378	Hydraulic Fitting - 45 Deg	1	17.75	
43	R340-132		Hydraulic Fitting - 90 Deg	1	15.15	

All original equipment manufacturers names and part numbers are used for identification purposes only, and we are in no way implying that our products are original equipment parts. Prices subject to change without notice.