

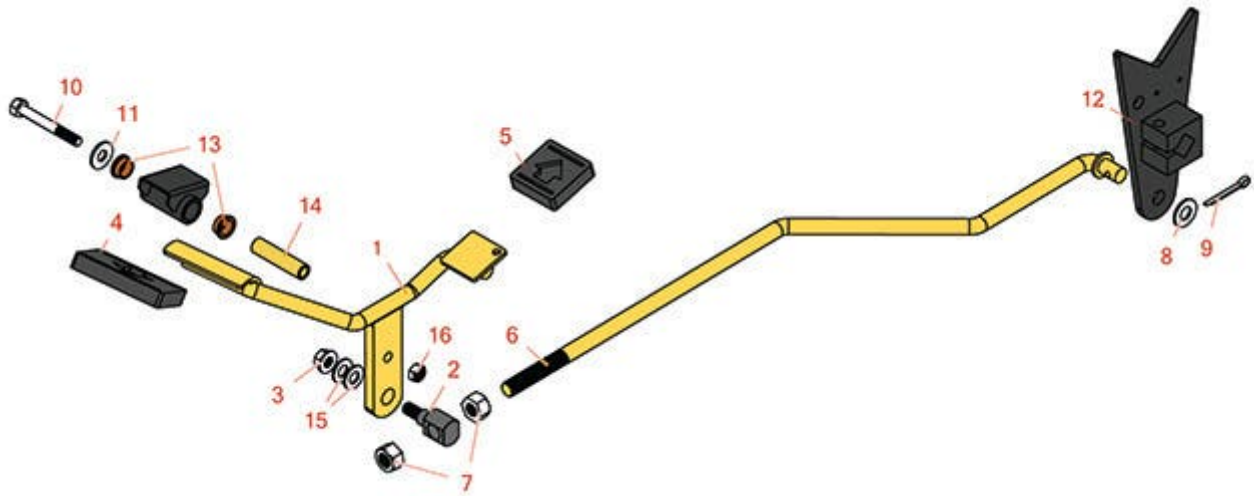


Replaces R&R Products Sand Max 216

Parts

Traction Unit

Traction Control Pedal



All original equipment manufacturers names and part numbers are used for identification purposes only, and we are in no way implying that our products are original equipment parts. Prices subject to change without notice.



Replaces R&R Products Sand Max 216

Parts

Traction Unit

Traction Control Pedal



Item No	R&R Part No.	OEM Part No.	Description	Qty Req	Price Each	Order Quantity
1	R92-2343-01	R92-2343	Pedal Assy	1	32.80	
2	R92-2344		Trunnion	1	28.25	
3	R3296-39	3296-39, R32127-25, R32128-36, R3296-17, R3296-22, R915663P, R99-7443	Locknut - 3/8-16 Nylon	1	1.40	
4	R74-9100		Rubber Foot Pad - Forward	1	10.95	
5	R74-9110		Rubber Foot Pad - Reverse	1	9.30	
6	R95-0584		Rod-Control	1	51.95	
7	R443818	R01-191-0813, R3218-18, R3218-5	Nut - 1/2-13 Hex Jam Zinc	2	0.35	
8	R187-0	3256-25, R3256-25, R7-0032	Washer - Flat 7/16 SAE	1	0.22	
9	R3272-16		Pin - Cotter 5/32 x 1-1/4	1	0.14	
10	R322-14	R01-150-0830, R01-178-0524, R30-8900	Bolt - Hex HD 5/16-18 x 3 GR5	1	2.15	

All original equipment manufacturers names and part numbers are used for identification purposes only, and we are in no way implying that our products are original equipment parts. Prices subject to change without notice.



Replaces R&R Products Sand Max 216 Parts

*Traction Unit
Traction Control Pedal*



Item No	R&R Part No.	OEM Part No.	Description	Qty Req	Price Each	Order Quantity
11	R453009	3256-3, R01-166-0400, R24-10-BD, R24-9-AD, R24H1136, R32-9650, R3256-2, R3256-23, R3256-67, R3290-217, R3556-3, R4-2390, R452006, R7-0152	Washer - Flat 5/16 SAE	1	0.13	
12	R112-0009	R107-3515-03	Lever - Pump Kit	1	59.35	
13	R256-156	R256-219	Bushing - Flanged	2	6.80	
14	R85-8960		Spacer	1	4.50	
15	R453011	3256-24, 453011, R01-166-0100, R01-166-0120, R01-166-0270, R01-166-0500, R01-166-0600, R01-166-0620, R132-4593, R237-12, R24-10-AD, R24-11-AD, R24-11-BD, R24-12-AD, R24-12-BD, R30-9310, R32-8190, R3256-24, R3256-3, R3256-36, R3256-4, R47-9950	Washer - Flat 3/8 SAE Y/Zinc	2	0.11	
16	R3296-29	3296-29, R1-804256, R915662P	Locknut - 5/16-18 ESNA	1	2.95	

All original equipment manufacturers names and part numbers are used for identification purposes only, and we are in no way implying that our products are original equipment parts. Prices subject to change without notice.



Replaces R&R Products Sand Max 216 Parts

Traction Unit

Traction Control Pedal



All original equipment manufacturers names and part numbers are used for identification purposes only, and we are in no way implying that our products are original equipment parts. Prices subject to change without notice.