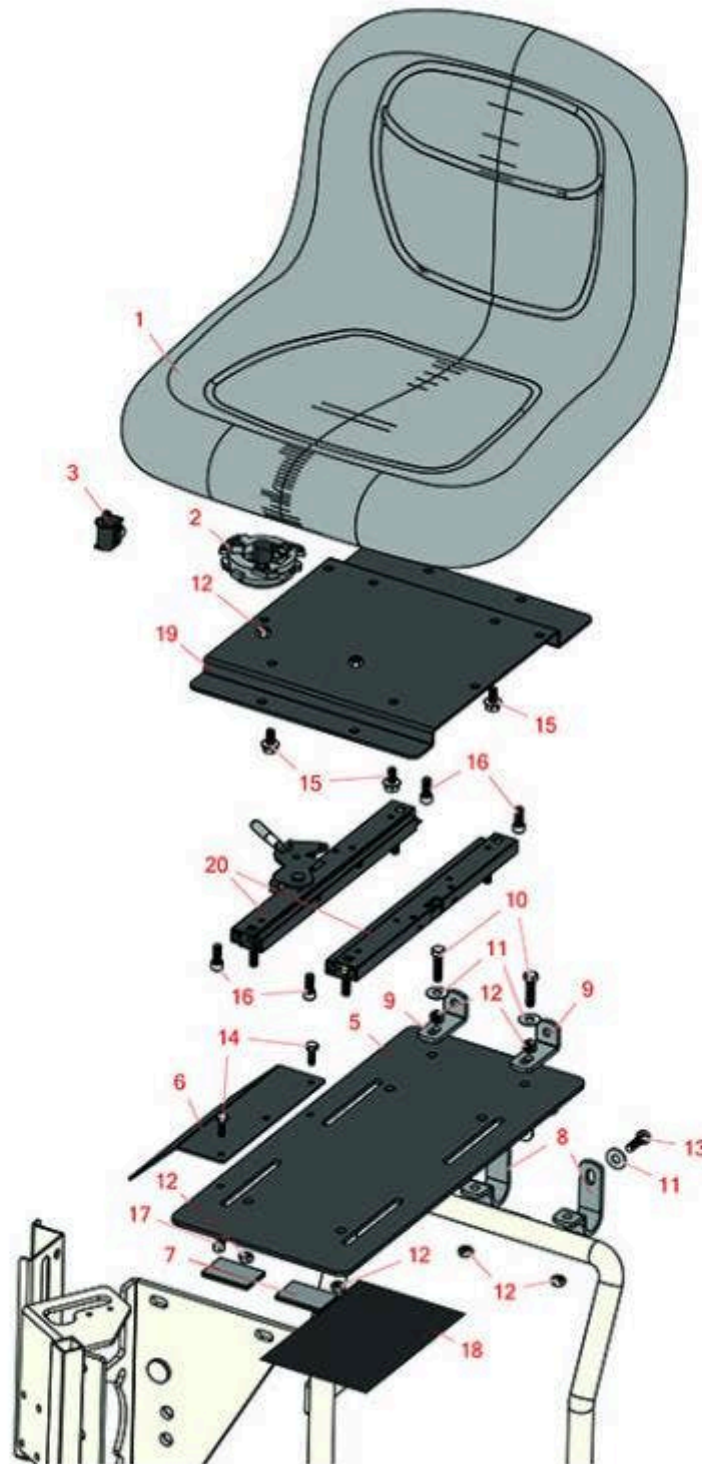




Replaces R&R Products Sand Max 216

Parts

*Traction Unit
Seat*



All original equipment manufacturers names and part numbers are used for identification purposes only, and we are in no way implying that our products are original equipment parts. Prices subject to change without notice.



Replaces R&R Products Sand Max 216

Parts

Traction Unit
Seat



Item No	R&R Part No.	OEM Part No.	Description	Qty Req	Price Each	Order Quantity
1	RMXB150GY	R17-4980, R27-5170, R62-9040, R66-6681, R66-7510, R750106, R76-1401, R92-8976	Milsco Seat XB150 - Grey	1	179.45	
<i>Detail Description: The Milsco XB150 Seat is a durable bucket-style seat designed with a blow molded corrosion-resistant plastic frame. The ergonomic vacuum-formed vinyl cushions are waterproof and ensure operator comfort. Covers will not crack or peel. Central drain hole prevents water build-up. Accepts operator presence switch. Seat: 18.75in W x 15.5in H. Grey. Made in U.S.A.
Please note: Due to excessive air freight charges, this item will be shipped ground freight.:</i>						
1	R120-5178		Small Seat Cover - Gray	1	44.90	
Gauges and Controls						
2	R151541		Delta Seat Switch - Twist Mount 1 Pole Normally Open	1	17.90	
3	R150229	R82-2190	Switch - Operator Presence	1	21.60	
Other Parts Available						
5	R95-0637-03	R95-0637	Plate-Seat	1	72.75	
6	R95-5840-03	R95-5840	Shield-Base, Seat	1	29.20	
7	R74-0340	R54-2700	Cushion - Rubber	2	3.40	
8	R92-8972		Clamp-Seat	2	7.85	
9	R92-8973		Angle	2	8.30	
10	R400190	R01-150-0720, R01-178-0510, R30-8680, R322-6, R513343	Bolt - Hex HD 5/16-18 x 1-1/4 GR5	2	0.42	

All original equipment manufacturers names and part numbers are used for identification purposes only, and we are in no way implying that our products are original equipment parts. Prices subject to change without notice.



Replaces R&R Products Sand Max 216

Parts

*Traction Unit
Seat*



Item No	R&R Part No.	OEM Part No.	Description	Qty Req	Price Each	Order Quantity
11	R453009	3256-3, R01-166-0400, R24-10-BD, R24-9-AD, R24H1136, R32-9650, R3256-2, R3256-23, R3256-67, R3290-217, R3556-3, R4-2390, R452006, R7-0152	Washer - Flat 5/16 SAE	4	0.14	
12	R3296-29	3296-29, R1-804256, R915662P	Locknut - 5/16-18 ESNA	12	3.10	
13	R322-5	322-5, R01-178-0508, R19H1905, R20-26-AD, R20-26-AGD, R30-9000, R400188, R513341, R519755, R908019P	Bolt - Hex HD 5/16-18 x 1	2	0.42	
14	R321-4	400108, R01-150-1030, R01-178-0406, R20-3-AGD, R3222-1, R400108	Bolt - Hex HD 1/4-20 x 3/4	2	0.55	
15	R3234-14	R3234-23	Bolt - Hex Serrated Washer HD	4	0.87	
16	R434024	434024, R3274-12	Bolt - Soc HD Cap 5/16-18 x 3/4	4	1.35	

All original equipment manufacturers names and part numbers are used for identification purposes only, and we are in no way implying that our products are original equipment parts. Prices subject to change without notice.



Replaces R&R Products Sand Max 216

Parts

*Traction Unit
Seat*



Item No	R&R Part No.	OEM Part No.	Description	Qty Req	Price Each	Order Quantity
17	R301504	R32127-24, R32146-17, R3296-16, R3296-42, R915661P, RM40333	Locknut - ESNA 1/4-20	2	0.19	
18	R95-0646		Decal-Service	1	9.35	
19	R86-7610-03	R86-7610	Mount-Seat	1	36.95	
20	R150228	R351-63, R51-0780	Adjusters - Seat (Set of 2)	1	132.80	

All original equipment manufacturers names and part numbers are used for identification purposes only, and we are in no way implying that our products are original equipment parts. Prices subject to change without notice.