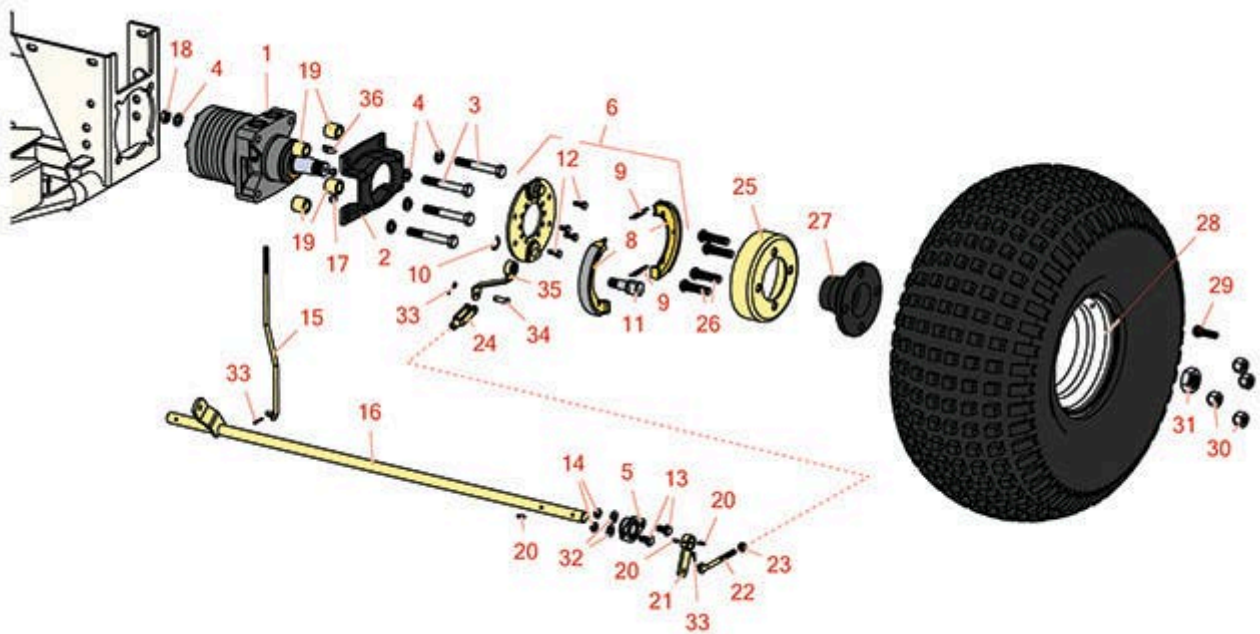




Replaces R&R Products Sand Max 216

Parts

*Traction Unit
Rear Wheel*



All original equipment manufacturers names and part numbers are used for identification purposes only, and we are in no way implying that our products are original equipment parts. Prices subject to change without notice.



Replaces R&R Products Sand Max 216

Parts

Traction Unit
Rear Wheel



Item No	R&R Part No.	OEM Part No.	Description	Qty Req	Price Each	Order Quantity
---------	--------------	--------------	-------------	---------	------------	----------------

Other Parts Available

1	R75-9831	R49-8621	Hydraulic Motor - LH Rear	1	1153.85	
2	R84-2000-03	R84-2000	Bracket - Brake	1	27.10	
3	R325-14	R01-150-1720, R01-178-0828, R20-95-AD, R20-95-AGD, R3226-9, R400420	Bolt - Hex HD 1/2-13 x 3-1/2	4	1.65	
4	R3253-7	R01-166-0030, R01-166-0080, R01-166-0290, R01-166-0810, R23-13-GD, R48-9380	Washer - Lock 1/2	8	0.13	
5	R27-2320		Bearing	1	15.15	
6	R71-1500	R104-7705	Brake Assy	1	101.35	
8	R70-9840		Shoe - Brake	2	23.65	
9	R70-9880		Spring - Brake Shoe	2	4.85	
10	R150513	R104-7706	E - Clip - Brake Assy	1	0.55	
11	R104-7707	R104-7708, R70-9850, R70-9860	Cam - Brake	1	39.45	
12	R321-4	400108, R01-150-1030, R01-178-0406, R20-3-AGD, R3222-1, R400108	Bolt - Hex HD 1/4-20 x 3/4	4	0.52	
13	R3234-1		Bolt - Flanged Serrated Hex HD 3/8-16 x 3/4	2	1.45	
14	R3296-59		Locknut - 3/8-16 Nylon Jam	2	0.65	

All original equipment manufacturers names and part numbers are used for identification purposes only, and we are in no way implying that our products are original equipment parts. Prices subject to change without notice.



Replaces R&R Products Sand Max 216

Parts

*Traction Unit
Rear Wheel*



Item No	R&R Part No.	OEM Part No.	Description	Qty Req	Price Each	Order Quantity
15	R95-0628		Rod-Brake	1	62.25	
16	R95-0625		Rod-Traverse	1	46.95	
17	R301504	R32127-24, R32146-17, R3296-16, R3296-42, R915661P, RM40333	Locknut - ESNA 1/4-20	4	0.18	
18	R443118	R01-188-0813, R22-15-AJD, R3217-9	Nut - 1/2-13 Zinc	4	0.39	
19	R92-1715	R100005	Spacer	4	6.55	
20	R32121-6		Pin - Roll 3/16 x 1-1/4	3	0.46	
21	R83-9310		Lever - Brake RH	1	29.05	
22	R84-1990		Rod-Adjusting	1	24.25	
23	R3220-2	R01-191-0524	Nut - Jam - 5/16-24	1	0.50	
24	R282-2	R1-303105	Yoke	1	15.15	
25	R10-6850		Drum - Brake	1	90.57	
26	R85-6540		Stud - Drive 1/2-20 x 2	4	7.95	
27	R93-6838-03	R17-4710-03, R93-6838	Hub-Wheel	1	55.90	
28	R94-6116	R114-4643, R242-53, R242-86, R46-4810	Rim - 8x8.5 White	1	70.60	
29	R232-24	R232-35, R341680, R363233, R814687	Stem - Valve w/ Cap	1	3.25	

All original equipment manufacturers names and part numbers are used for identification purposes only, and we are in no way implying that our products are original equipment parts. Prices subject to change without notice.



Replaces R&R Products Sand Max 216

Parts

Traction Unit

Rear Wheel



Item No	R&R Part No.	OEM Part No.	Description	Qty Req	Price Each	Order Quantity
30	R242-50		Nut - 1/2-20 Wheel	4	1.50	
31	R26-3790		Nut - Hex - Wheel Motor 1-20	1	14.75	
32	R453011	3256-24, 453011, R01-166-0100, R01-166-0120, R01-166-0270, R01-166-0500, R01-166-0600, R01-166-0620, R132-4593, R237-12, R24-10-AD, R24-11-AD, R24-11-BD, R24-12-AD, R24-12-BD, R30-9310, R32-8190, R3256-24, R3256-3, R3256-36, R3256-4, R47-9950	Washer - Flat 3/8 SAE Y/Zinc	2	0.11	
33	R11M7012		Pin - Cotter 1/8 x 5/8	3	0.23	
34	R283-1	R283-13	Pin - Clevis	1	1.10	
35	R93-6850	R114-2726	Lever - Brake	1	32.80	
36	R3257-42		Key - Woodruff 5/16 x 1	1	2.75	

All original equipment manufacturers names and part numbers are used for identification purposes only, and we are in no way implying that our products are original equipment parts. Prices subject to change without notice.