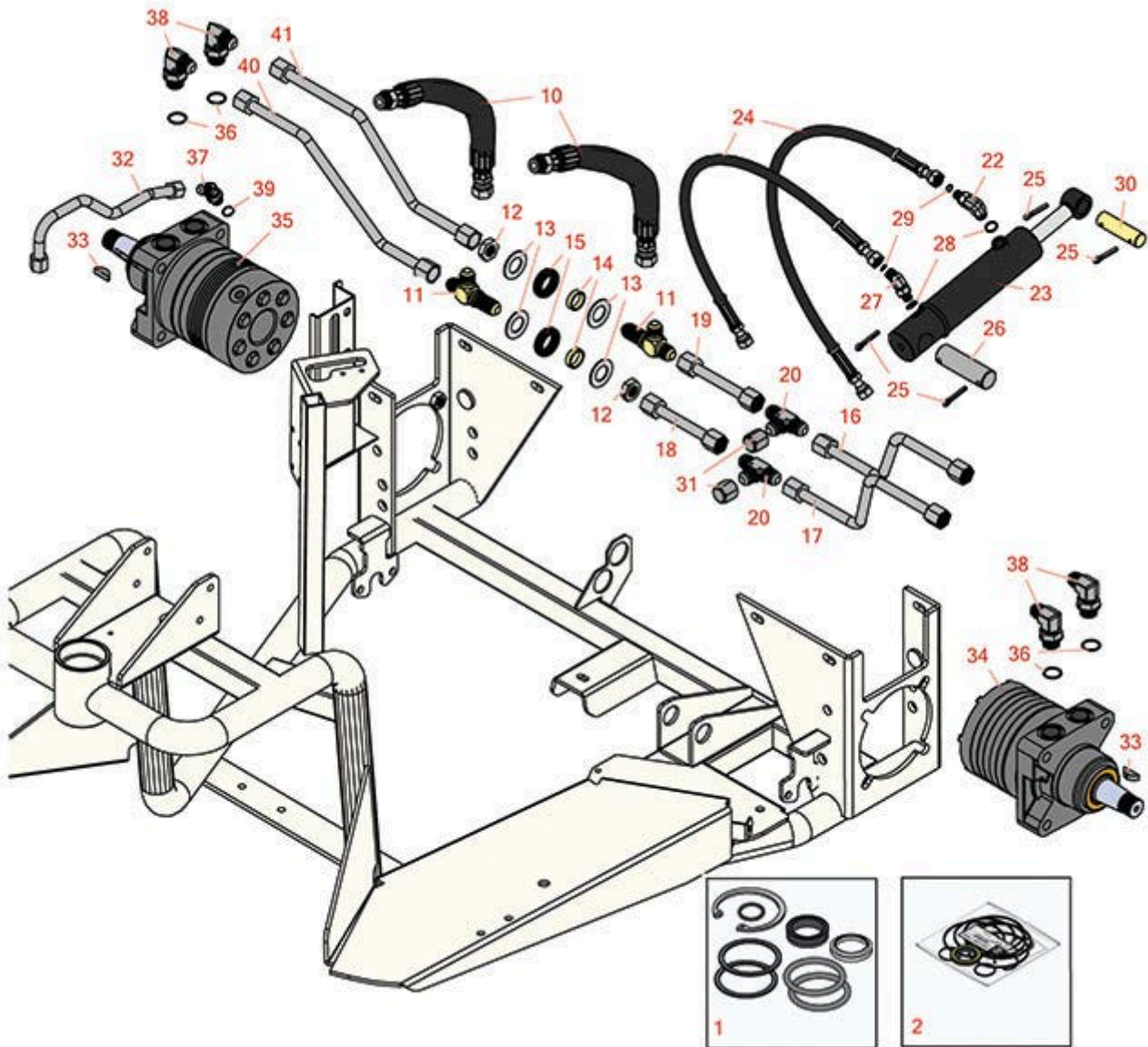




Replaces R&R Products Sand Max 216

Parts

Traction Unit
Hydraulic System



All original equipment manufacturers names and part numbers are used for identification purposes only, and we are in no way implying that our products are original equipment parts. Prices subject to change without notice.



Replaces R&R Products Sand Max 216

Parts

Traction Unit
Hydraulic System



Item No	R&R Part No.	OEM Part No.	Description	Qty Req	Price Each	Order Quantity
---------	--------------	--------------	-------------	---------	------------	----------------

Overhaul Kits

1	R83-7000SK	R56-3810, R56-3820, R70-2790, R83-7250, R86-5260, R86-5360	Seal Kit - Fits R83-7000 Cylinder	1	43.25	
---	-------------------	---	-----------------------------------	---	--------------	--

Detail Description: Includes Seals, O-Rings & 1 ea: R43-5220 Retaining Ring to rebuild one cylinder:

2	R76-0800	R100-6131, R94-8178, RTCA18042	Seal Kit - Hyd Wheel Motor	0	58.25	
---	-----------------	--------------------------------------	----------------------------	---	--------------	--

Other Parts Available

10	R95-0595		Hose- Assy	2	67.15	
11	R95-0577		Fitting - Bulkhead	2	33.15	
12	R95-0642		Locknut - Bulkhead	2	3.25	
13	R69-8930		Washer	4	1.85	
14	R69-8960		Spacer	2	5.95	
15	R240-5		Grommet - Rubber	2	8.30	
16	R150911		Tube - RH Rear	1	33.55	
17	R150917		Tube - RH Front	1	33.55	
18	R150918		Tube - LH Front	1	49.70	
19	R150912		Tube - LH Rear	1	49.70	
20	R150910		Hydraulic Fitting - 1/2 T	2	14.40	
23	R83-7000	R27-2510, R43-5260, R68-9700, R74-3300	Hydraulic Cylinder	1	239.95	

All original equipment manufacturers names and part numbers are used for identification purposes only, and we are in no way implying that our products are original equipment parts. Prices subject to change without notice.



Replaces R&R Products Sand Max 216

Parts

*Traction Unit
Hydraulic System*



Item No	R&R Part No.	OEM Part No.	Description	Qty Req	Price Each	Order Quantity
22	R340-132		Hydraulic Fitting - 90 Deg	1	15.15	
24	R75-6200		Hydraulic Hose Assy	2	36.70	
25	R460050	R01-151-0060, R3272-23	Pin - Cotter 3/16 x 1-1/4	4	0.27	
26	R18-7160		Pin - Cylinder	1	25.70	
27	R340-103	R340-137	Hydraulic Fitting - 45 Deg	2	19.10	
28	R237-22	R107-8844, R232-72, R237-78	O-Ring	2	0.65	
29	R237-21		O-Ring	2	0.49	
30	R18-7310		Pin - Cylinder	1	16.15	
31	R95-0594		Fitting-Cap	1	6.15	
32	R95-0575		Tube-Valve, Shuttle	1	33.45	
33	R3257-42		Key - Woodruff 5/16 x 1	3	2.90	
34	R75-9831	R49-8621	Hydraulic Motor - LH Rear	1	815.75	
35	R75-9840	R49-8600, R49-8630	Hydraulic Motor - RH Rear	1	815.75	
36	R237-80	R327-80	O-Ring	6	1.95	
37	R353-212	R30-6430, R353-378	Hydraulic Fitting - 45 Deg	1	17.75	
38	R353-426		Fitting - 90 Deg	4	21.40	
39	R237-42	R31-4160, R339897	O-Ring	1	0.84	
40	R95-0564		Tube-RH, Front	1	32.50	
41	R95-0559		Tube-RH, Rear	1	32.50	

All original equipment manufacturers names and part numbers are used for identification purposes only, and we are in no way implying that our products are original equipment parts. Prices subject to change without notice.