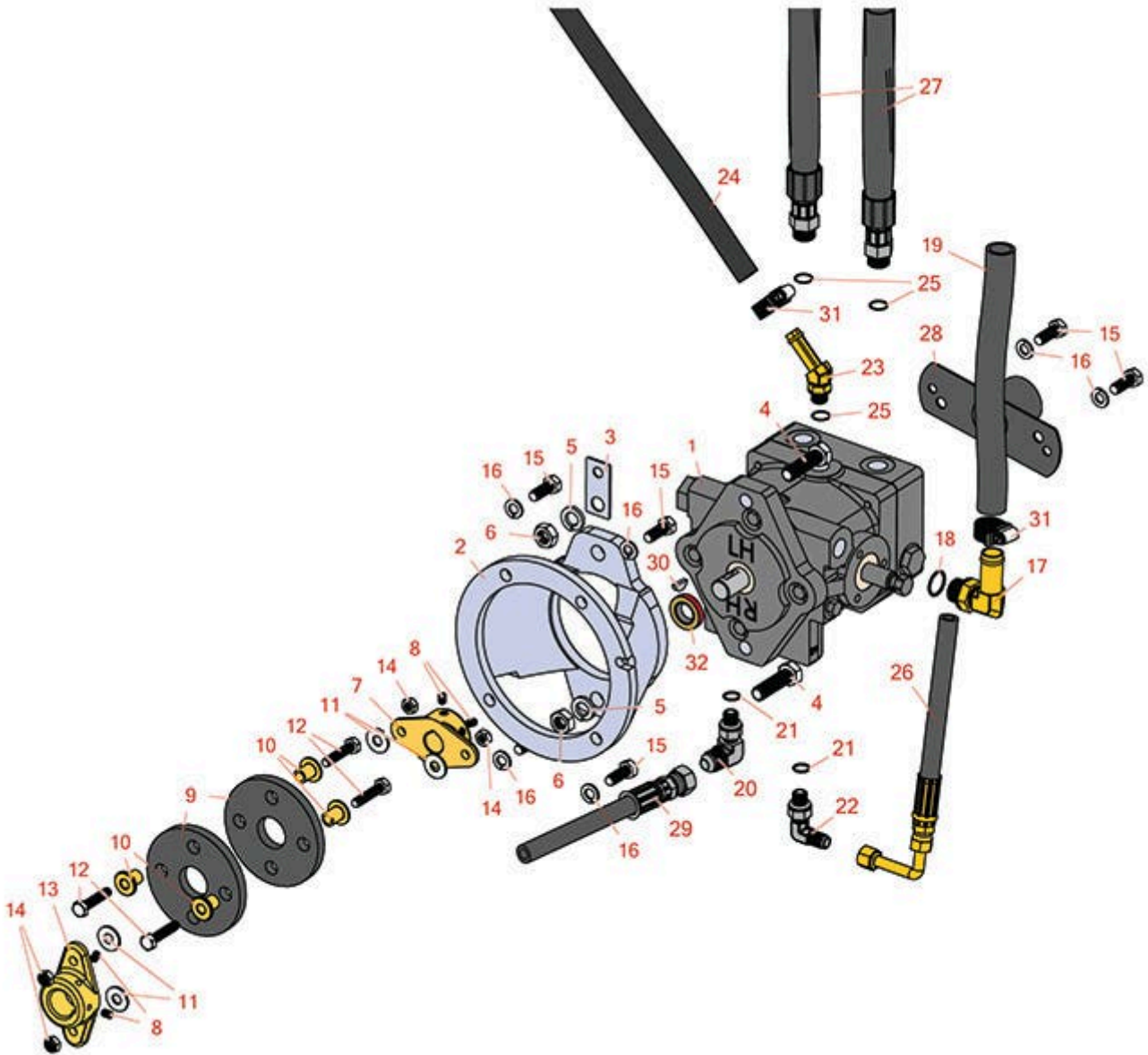




# Replaces R&R Products Sand Max 216

## Parts

Traction Unit  
Hydraulic Pump



All original equipment manufacturers names and part numbers are used for identification purposes only, and we are in no way implying that our products are original equipment parts. Prices subject to change without notice.



# Replaces R&R Products Sand Max 216

## Parts

*Traction Unit  
Hydraulic Pump*



Item No	R&R Part No.	OEM Part No.	Description	Qty Req	Price Each	Order Quantity
1	<b>R114-0613</b>	R106-9248, R95-0587	Pump - Variable	1	<b>1625.00</b>	
2	<b>R95-0631-03</b>	R95-0631	Mount-Pump	1	<b>208.70</b>	
3	<b>R26-2950</b>		Wire-Standoff	1	<b>6.25</b>	
4	<b>R325-7</b>	R01-150-0380, R01-178-0814, R3226-3, R48-9490	Bolt - 1/2-13 x 1 3/4 Hex HD Gr 5	2	<b>0.84</b>	
5	<b>R3253-7</b>	R01-166-0030, R01-166-0080, R01-166-0290, R01-166-0810, R23-13-GD, R48-9380	Washer - Lock 1/2	2	<b>0.13</b>	
6	<b>R443118</b>	R01-188-0813, R22-15-AJD, R3217-9	Nut - 1/2-13 Zinc	2	<b>0.39</b>	
7	<b>R49-9600</b>	R110-9695	Hub - Pump	1	<b>29.40</b>	
8	<b>R3241-5</b>	R3245-7, R352-103, R7-1993	Screw - Set 1/4-20 x 3/8	4	<b>0.87</b>	
9	<b>R44-2230</b>	R115-4523, R27-6560, R80-8650	Coupling - Rubber - Pump	2	<b>24.55</b>	
10	<b>R71-4411</b>		Spacer - Coupling	4	<b>4.90</b>	

All original equipment manufacturers names and part numbers are used for identification purposes only, and we are in no way implying that our products are original equipment parts. Prices subject to change without notice.



# Replaces R&R Products Sand Max 216

## Parts

*Traction Unit  
Hydraulic Pump*



Item No	R&R Part No.	OEM Part No.	Description	Qty Req	Price Each	Order Quantity
11	<b>R453009</b>	3256-3, R01-166-0400, R24-10-BD, R24-9-AD, R24H1136, R32-9650, R3256-2, R3256-23, R3256-67, R3290-217, R3556-3, R4-2390, R452006, R7-0152	Washer - Flat 5/16 SAE	4	<b>0.13</b>	
12	<b>R322-7</b>	R01-150-0750, R01-150-0760, R01-178-0512, R20-28-AD, R20-28-AGD, R3223-4	Bolt - Hex HD 5/16-18 x 1-1/2	4	<b>0.62</b>	
13	<b>R27-1960</b>	R110-5236	Hub - Engine	1	<b>35.25</b>	
14	<b>R3296-29</b>	3296-29, R1-804256, R915662P	Locknut - 5/16-18 ESNA	4	<b>2.95</b>	
15	<b>R323-6</b>	323-6, R01-150-0010, R01-178-0608, R20-47-AD, R20-47-AGD, R3224-2, R49-3510, R908034P, R908332	Bolt - Hex HD 3/8-16 x 1 GR5 YZ	6	<b>0.59</b>	

All original equipment manufacturers names and part numbers are used for identification purposes only, and we are in no way implying that our products are original equipment parts. Prices subject to change without notice.



# Replaces R&R Products Sand Max 216

## Parts

*Traction Unit  
Hydraulic Pump*



Item No	R&R Part No.	OEM Part No.	Description	Qty Req	Price Each	Order Quantity
16	<b>R3254-6</b>	446142, R01-166-0010, R01-166-0280, R01-166-0610, R12H304, R3253-5, R3254-18, R3290-223, R446140, R446142, R48-9370	Washer - Lock 3/8	6	<b>0.08</b>	
17	<b>R95-0629</b>	R87-8170	Hydraulic Fitting - Push 90 Deg	1	<b>41.55</b>	
18	<b>R237-80</b>	R327-80	O-Ring	1	<b>1.85</b>	
19	<b>R95-0555</b>		Hose - Suction	1	<b>9.55</b>	
20	<b>R353-511</b>		Hydraulic Fitting - 90 Deg	1	<b>19.90</b>	
21	<b>R237-42</b>	R31-4160, R339897	O-Ring	2	<b>0.80</b>	
22	<b>R353-374</b>		Elbow - 90 Deg	1	<b>24.45</b>	
23	<b>R354-126</b>		Hydraulic Fitting - 45 Deg	1	<b>26.80</b>	
24	<b>R98-8153</b>		Hose - Return	1	<b>6.25</b>	
25	<b>R237-79</b>		O-Ring	3	<b>1.50</b>	
26	<b>R95-0592</b>		Hydraulic Hose Assy	1	<b>46.95</b>	
27	<b>R95-0595</b>		Hose- Assy	2	<b>63.95</b>	
28	<b>R95-0632-03</b>	R95-0632	Cover Assy	1	<b>17.90</b>	
29	<b>R95-0591</b>		Hydraulic Hose Assy	1	<b>55.90</b>	
30	<b>R3257-32</b>	R13-2840	Key - Woodruff	1	<b>1.20</b>	

All original equipment manufacturers names and part numbers are used for identification purposes only, and we are in no way implying that our products are original equipment parts. Prices subject to change without notice.



# Replaces R&R Products Sand Max 216

## Parts

*Traction Unit  
Hydraulic Pump*



Item No	R&R Part No.	OEM Part No.	Description	Qty Req	Price Each	Order Quantity
31	<b>R2412-36</b>	R2210-87, R31-9140, R93-5818, R99-0772	Clamp - Hose 1/2	2	<b>2.75</b>	
32	<b>R93-4133</b>	R28-3660, R67-8060	Seal	1	<b>25.40</b>	

All original equipment manufacturers names and part numbers are used for identification purposes only, and we are in no way implying that our products are original equipment parts. Prices subject to change without notice.