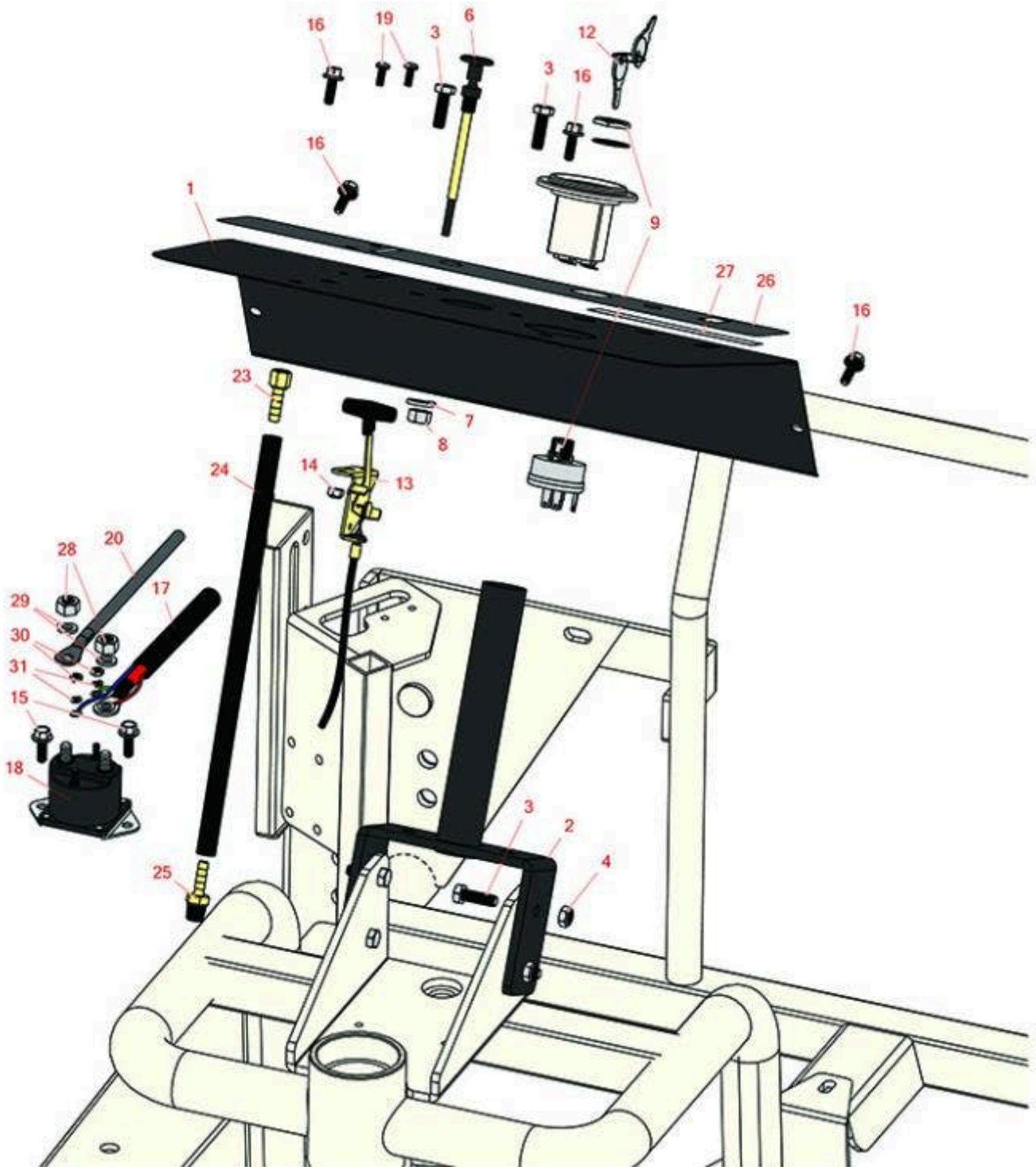




# Replaces R&R Products Sand Max 216

## Parts

Traction Unit  
Control Panel



All original equipment manufacturers names and part numbers are used for identification purposes only, and we are in no way implying that our products are original equipment parts. Prices subject to change without notice.



# Replaces R&R Products Sand Max 216

## Parts

*Traction Unit  
Control Panel*



Item No	R&R Part No.	OEM Part No.	Description	Qty Req	Price Each	Order Quantity
1	<b>R105-8524</b>	R99-1646, R99-1646-03	Dash Panel Assy	1	<b>52.50</b>	
2	<b>R92-5035</b>	R92-5035-01, R92-5035-03	Steering Post Assy	1	<b>61.85</b>	
3	<b>R322-5</b>	322-5, R01-178-0508, R19H1905, R20-26-AD, R20-26-AGD, R30-9000, R400188, R513341, R519755, R908019P	Bolt - Hex HD 5/16-18 x 1	6	<b>0.40</b>	
4	<b>R3296-29</b>	3296-29, R1-804256, R915662P	Locknut - 5/16-18 ESNA	4	<b>2.95</b>	
6	<b>R112-7689</b>	R95-0597	Choke Control	1	<b>26.50</b>	
7	<b>R3253-6</b>	R01-166-0710, R23-12-GD, R59-7590, RF4076	Washer - Lock 7/16 Zinc	1	<b>0.29</b>	
8	<b>R3219-3</b>	R01-188-0624, R215-50, R22-13-BJD, R22-13-BJKD, R443112, R443812	Nut - 3/8-24	1	<b>0.34</b>	
9	<b>R83-0020</b>		Switch - Key 6 Lead	1	<b>20.45</b>	
12	<b>R343060</b>	R218-412, R32-8380, R33-2010, R5000039, R62-7770, R63-8360, R94-2618	Ignition - Key Set/2	1	<b>2.75</b>	

All original equipment manufacturers names and part numbers are used for identification purposes only, and we are in no way implying that our products are original equipment parts. Prices subject to change without notice.



# Replaces R&R Products Sand Max 216

## Parts

*Traction Unit  
Control Panel*



Item No	R&R Part No.	OEM Part No.	Description	Qty Req	Price Each	Order Quantity
13	<b>R112-7688</b>	R95-0598	Throttle Control	1	<b>20.55</b>	
14	<b>R3296-12</b>	R32127-20	Nut - 10-32 Nylon Lock	2	<b>0.55</b>	
15	<b>R49-2040</b>	R32104-42, R32104-95, R32144-44	Bolt - Hex Washer 1/4-20 x 3/4	2	<b>0.72</b>	
16	<b>R3234-33</b>		Bolt - 1/4-20 x 3/4 Serr Hex Flanged	4	<b>0.51</b>	
17	<b>R95-0599</b>		Wire Assy	1	<b>21.90</b>	
18	<b>R28-4210</b>		Solenoid	1	<b>29.05</b>	
19	<b>R300402</b>	R32105-2	Screw - 10-32 x 1/2 Skt HD Cap Scr	2	<b>0.26</b>	
20	<b>R95-5825</b>		Wire Assy	1	<b>18.45</b>	
23	<b>R150954</b>		Adapter - Brass - Barb 1/8 Fpt x 5/16	1	<b>5.45</b>	
24	<b>R150953</b>		Hose	1	<b>8.45</b>	
25	<b>R150951</b>		Adapter - Brass - Barb 1/8 Mpt x 5/16	1	<b>2.85</b>	
26	<b>R95-0648</b>		Decal	1	<b>11.70</b>	
27	<b>R93-9052</b>		Decal-Danger	1	<b>14.05</b>	
28	<b>R443106</b>	3218-2, 443106, R01-188-0518, R09003, R22-12-AJD, R32111-4, R3217-4, R3217-6, R513295, R513412, R915112P, R915978, R915979	Nut - 5/16-18 Y/Zinc Plated	2	<b>0.19</b>	

All original equipment manufacturers names and part numbers are used for identification purposes only, and we are in no way implying that our products are original equipment parts. Prices subject to change without notice.



# Replaces R&R Products Sand Max 216 Parts

*Traction Unit  
Control Panel*



Item No	R&R Part No.	OEM Part No.	Description	Qty Req	Price Each	Order Quantity
29	<b>R3253-4</b>	R01-166-0110, R01-166-0510, R09053, R23-10-GD, R24-7170, R30-8520, R42-9850, R48-9350, R48-9360, R48-9570, R68-9420, R99-7577	Washer - Lock 5/16 Zinc	2	<b>0.14</b>	
30	<b>R444312</b>	R22-9-BJD, R26-2360, R26-4370, R3219-12, R3219-14, R48-9280, R513287, R915561	Nut - 10-32	2	<b>0.08</b>	
31	<b>R446146</b>	446148, R446148	Lock Washer - 7/16	2	<b>0.23</b>	

All original equipment manufacturers names and part numbers are used for identification purposes only, and we are in no way implying that our products are original equipment parts. Prices subject to change without notice.