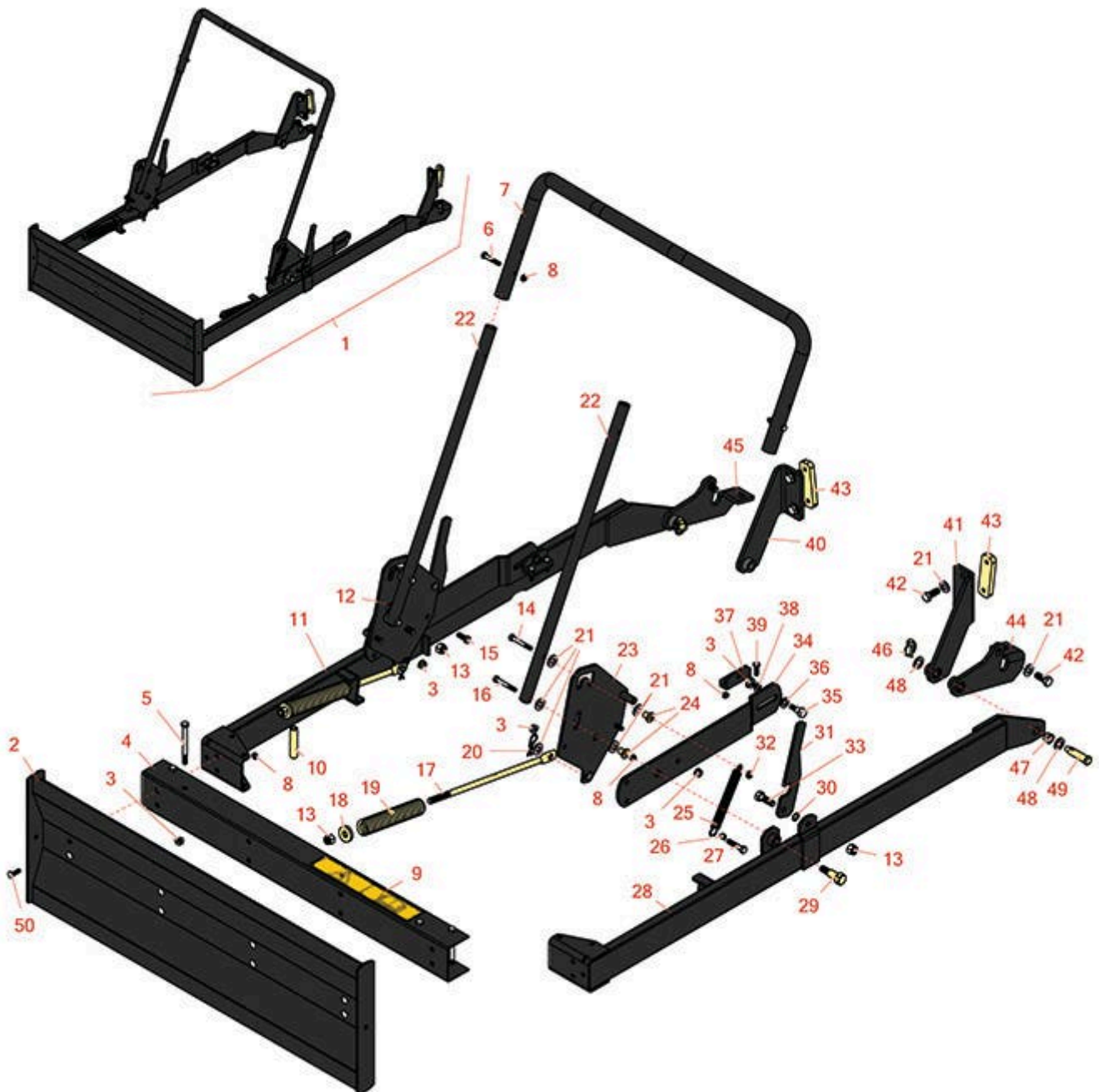




# Replaces R&R Products Sand Max 216

## Parts

Attachments  
Front Blade



All original equipment manufacturers names and part numbers are used for identification purposes only, and we are in no way implying that our products are original equipment parts. Prices subject to change without notice.



# Replaces R&R Products Sand Max 216

## Parts

Attachments

Front Blade



Item No	R&R Part No.	OEM Part No.	Description	Qty Req	Price Each	Order Quantity
---------	--------------	--------------	-------------	---------	------------	----------------

### Complete Front Blade Kit

1	<b>R08821</b>		Front Blade Kit	0	<b>1540.15</b>	
---	---------------	--	-----------------	---	----------------	--

### Other Parts Available

2	<b>R84-2460-03</b>	84-2460-03, R80-1190, R84-2460	Blade Assy	1	<b>257.55</b>	
3	<b>R3296-39</b>	3296-39, R32127-25, R32128-36, R3296-17, R3296-22, R915663P, R99-7443	Locknut - 3/8-16 Nylon	6	<b>1.40</b>	
4	<b>R16-1019</b>	16-1019, R80-1820	Channel	1	<b>109.95</b>	
5	<b>R323-17</b>	323-17	Bolt - Hex HD 3/8-16 x 4	4	<b>3.25</b>	
6	<b>R19H3130</b>	322-9, R322-9, R3223-5	Bolt - Hex HD 5/16-18 x 1-3/4	2	<b>0.84</b>	
7	<b>R92-2314</b>	92-2314, R80-1850	Handle	1	<b>103.35</b>	
8	<b>R3296-29</b>	3296-29, R1-804256, R915662P	Locknut - 5/16-18 ESNA	18	<b>2.95</b>	
9	<b>R93-9078</b>	93-9078	Decal-Safety	1	<b>6.75</b>	
10	<b>R80-1890</b>	80-1890	Spacer	4	<b>4.55</b>	
11	<b>R92-2308-03</b>	92-2308-03, R92-2308	RH Arm Assy	1	<b>238.95</b>	
12	<b>R92-2319-03</b>	92-2319-03, R92-2319	RH Plate Assy	1	<b>70.80</b>	

All original equipment manufacturers names and part numbers are used for identification purposes only, and we are in no way implying that our products are original equipment parts. Prices subject to change without notice.



# Replaces R&R Products Sand Max 216

## Parts

Attachments  
Front Blade



Item No	R&R Part No.	OEM Part No.	Description	Qty Req	Price Each	Order Quantity
13	<b>RF5003</b>	3296-23, R32127-29, R32131-5, R32132-5, R3296-23, R64229-05	Locknut - ESNA 1/2-13	6	<b>0.78</b>	
14	<b>R322-12</b>	322-12, R01-150-0730, R01-178-0520	Bolt - 5/16-18 x 2 1/2 Hx HD	2	<b>2.30</b>	
15	<b>R323-6</b>	323-6, R01-150-0010, R01-178-0608, R20-47-AD, R20-47-AGD, R3224-2, R49-3510, R908034P, R908332	Bolt - Hex HD 3/8-16 x 1 GR5 YZ	2	<b>0.59</b>	
16	<b>R322-11</b>	322-11, R01-150-0390, R01-178-0518, R20-31-AD, R3223-7	Bolt - 5/16-18 x 2 1/4 Hx HD	2	<b>1.05</b>	
17	<b>R80-1460</b>	80-1460	Rod-Spring	2	<b>20.70</b>	
18	<b>R70-8040</b>	70-8040	Washer	2	<b>2.40</b>	
19	<b>R80-1470</b>	80-1470	Spring - Stainless	2	<b>66.55</b>	
20	<b>R3272-12</b>	3272-12, R01-151-0090, R28-19-D	Pin - Cotter 1/8 x 1-1/4	2	<b>0.11</b>	
21	<b>R3256-26</b>	3256-26, R01-166-0540, R01-166-0820, R17-2530, R24-13-BD, R30-8570, R356206, R48-9390	Washer - 1/2 in	14	<b>0.41</b>	

All original equipment manufacturers names and part numbers are used for identification purposes only, and we are in no way implying that our products are original equipment parts. Prices subject to change without notice.



# Replaces R&R Products Sand Max 216

## Parts

Attachments  
Front Blade



Item No	R&R Part No.	OEM Part No.	Description	Qty Req	Price Each	Order Quantity
22	<b>R80-1860-03</b>	80-1860-03, R80-1860	Handle Upright Assy	2	<b>57.50</b>	
23	<b>R92-2318-03</b>	92-2318-03, R92-2318	LH Plate Assy	1	<b>70.80</b>	
24	<b>R27-6602</b>	27-6602	Spacer-Coupling	4	<b>4.55</b>	
25	<b>R76-4660</b>	76-4660	Spring-Door	2	<b>6.80</b>	
26	<b>R3218-3</b>	3218-3, R01-191-0616, R22-13-AJKD, R443810, R915236P	Nut - 3/8-16 Jam	2	<b>0.39</b>	
27	<b>R323-9</b>	323-9, R01-150-0190, R01-150-1540, R01-178-0614, R107229, R20-50-AD, R20-50-AGD, R30-9430, R32105-4, R3224-5, R513363, R513364, R5377, R908037P	Bolt - Hex HD 3/8-16 x 1-3/4	2	<b>0.91</b>	
28	<b>R92-2307-03</b>	92-2307-03, R92-2307	LH Arm Assy	1	<b>238.95</b>	
29	<b>R92-2315</b>	92-2315	Bolt-Shoulder	2	<b>24.65</b>	
30	<b>R3290-450</b>	3290-450	Washer-Belleville	2	<b>4.55</b>	
31	<b>R92-2320</b>	92-2320	Lever-Latch	2	<b>26.35</b>	

All original equipment manufacturers names and part numbers are used for identification purposes only, and we are in no way implying that our products are original equipment parts. Prices subject to change without notice.



# Replaces R&R Products Sand Max 216

## Parts

Attachments

Front Blade



Item No	R&R Part No.	OEM Part No.	Description	Qty Req	Price Each	Order Quantity
32	<b>R443106</b>	3218-2, 443106, R01-188-0518, R09003, R22-12-AJD, R32111-4, R3217-4, R3217-6, R513295, R513412, R915112P, R915978, R915979	Nut - 5/16-18 Y/Zinc Plated	2	<b>0.19</b>	
33	<b>R400408</b>	325-6, R01-150-0090, R01-178-0812, R20-87-AD, R20-87-AGD, R20-87-AGF, R3226-2, R325-6, R513376, R513378	Bolt - Hex HD 1/2-13 x 1-1/2	2	<b>2.30</b>	
34	<b>R92-2313-03</b>	92-2313-03, R92-2313	Arm-Lift	2	<b>45.40</b>	
35	<b>R80-1300</b>	80-1300	Bolt-Shoulder	2	<b>18.45</b>	
36	<b>R257-5</b>	257-5	Washer - Thrust	4	<b>1.85</b>	
37	<b>R92-2324</b>	92-2324	Bracket-Pivot	2	<b>24.65</b>	

All original equipment manufacturers names and part numbers are used for identification purposes only, and we are in no way implying that our products are original equipment parts. Prices subject to change without notice.



# Replaces R&R Products Sand Max 216

## Parts

Attachments  
Front Blade



Item No	R&R Part No.	OEM Part No.	Description	Qty Req	Price Each	Order Quantity
38	<b>R453011</b>	3256-24, 453011, R01-166-0100, R01-166-0120, R01-166-0270, R01-166-0500, R01-166-0600, R01-166-0620, R132-4593, R237-12, R24-10-AD, R24-11-AD, R24-11-BD, R24-12-AD, R24-12-BD, R30-9310, R32-8190, R3256-24, R3256-3, R3256-36, R3256-4, R47-9950	Washer - Flat 3/8 SAE Y/Zinc	2	<b>0.11</b>	
39	<b>R322-5</b>	322-5, R01-178-0508, R19H1905, R20-26-AD, R20-26-AGD, R30-9000, R400188, R513341, R519755, R908019P	Bolt - Hex HD 5/16-18 x 1	4	<b>0.40</b>	
40	<b>R92-2326-03</b>	92-2326-03, R92-2326	RH Bracket Assy	1	<b>72.75</b>	
41	<b>R92-2325-03</b>	92-2325-03, R92-2325	LH Bracket Assy	1	<b>72.75</b>	
42	<b>R325-5</b>	325-5, R01-150-0250, R01-178-0810, R19-8000, R20-86-AGD, R3226-1, R513375	Bolt - Hex HD 1/2-13 x 1-1/4	4	<b>0.83</b>	

All original equipment manufacturers names and part numbers are used for identification purposes only, and we are in no way implying that our products are original equipment parts. Prices subject to change without notice.



# Replaces R&R Products Sand Max 216

## Parts

Attachments

Front Blade



Item No	R&R Part No.	OEM Part No.	Description	Qty Req	Price Each	Order Quantity
43	<b>R80-1210</b>	80-1210	Block-Mounting	2	<b>20.15</b>	
44	<b>R92-2311-03</b>	92-2311-03, R92-2311	LH Bracket Assy	1	<b>63.10</b>	
45	<b>R92-2312-03</b>	92-2312-03, R92-2312	RH Bracket Assy	1	<b>63.10</b>	
46	<b>R3290-495</b>	3290-495, R32-0140	Pin-Klik	2	<b>3.65</b>	
47	<b>R256-317</b>	256-317	Bushing	2	<b>11.55</b>	
48	<b>R257-11</b>	257-11	Washer - Thrust Hardened	4	<b>3.85</b>	
49	<b>R92-2323</b>	92-2323, R80-1840	Pin	2	<b>13.50</b>	
50	<b>R3230-2</b>	3230-2, R01-173-0508, R25-25-AGD, R513624, R513633, R513635, R900038P	Bolt - Carriage	8	<b>1.05</b>	

All original equipment manufacturers names and part numbers are used for identification purposes only, and we are in no way implying that our products are original equipment parts. Prices subject to change without notice.