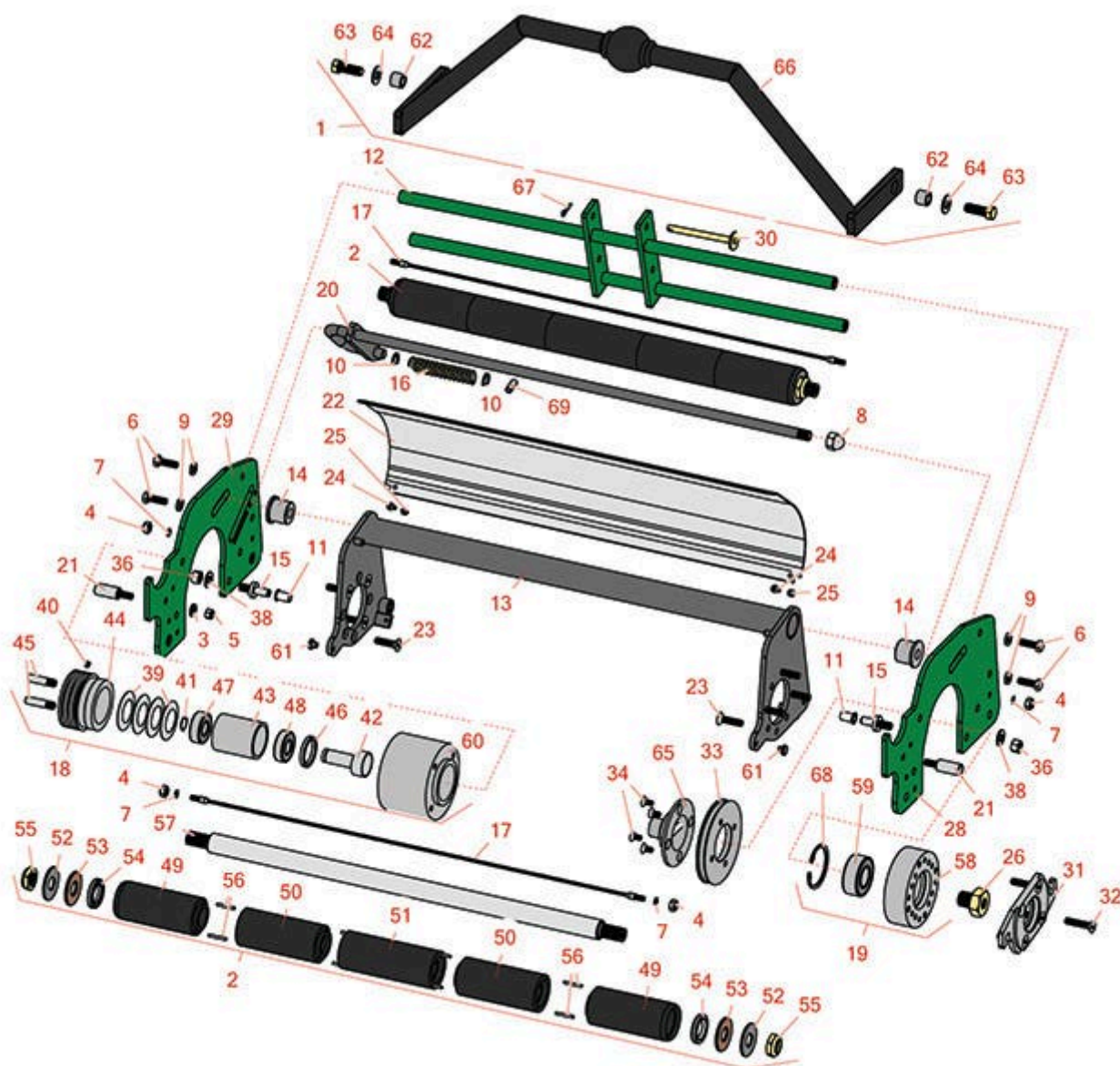




Replaces R&R Products Multi-Green Units Parts

Chassis to fit John Deere
Chassis Parts



All original equipment manufacturers names and part numbers are used for identification purposes only, and we are in no way implying that our products are original equipment parts. Prices subject to change without notice.



Replaces R&R Products Multi-Green Units Parts

Chassis to fit John Deere
Chassis Parts



Item No	R&R Part No.	OEM Part No.	Description	Qty Req	Price Each	Order Quantity
---------	--------------	--------------	-------------	---------	------------	----------------

Mounting Kits

1	RMG41003		Mounting Kit - Fits John Deere	0	231.55	
---	-----------------	--	--------------------------------	---	---------------	--

Tech Note: Includes: 2ea: R6042-02-150 Bushings, R400336 Bolts, R187-0 Washers & 1 ea: R6042-02-000 Lift Yoke Assy.:

Chassis Parts Available

2	R101335		Roller - Smooth UHMW Polyethylene	0	186.65	
---	----------------	--	-----------------------------------	---	---------------	--

Tech Note: Machined from solid UHMW, this low maintenance roller uses a 1" solid stainless steel shaft and requires no grease. UHMW material prevents build-up of debris.:

3	R24M7036		Washer - Flat 8mm Zinc	0	0.23	
---	-----------------	--	------------------------	---	-------------	--

4	R301504	R32127-24, R32146-17, R3296-16, R3296-42, R915661P, RM40333	Locknut - ESNA 1/4-20	0	0.18	
---	----------------	--	-----------------------	---	-------------	--

5	R32153-3	R119-4038, R22-12-AJFD, R32127-35, R32146-5, R3296-18, R3296-31, RJ317000	Locknut - 5/16-18 ESNA Zinc	0	0.62	
---	-----------------	---	-----------------------------	---	-------------	--

6	R322-5	322-5, R01-178-0508, R19H1905, R20-26-AD, R20-26-AGD, R30-9000, R400188, R513341, R519755, R908019P	Bolt - Hex HD 5/16-18 x 1	0	0.40	
---	---------------	--	---------------------------	---	-------------	--

All original equipment manufacturers names and part numbers are used for identification purposes only, and we are in no way implying that our products are original equipment parts. Prices subject to change without notice.



Replaces R&R Products Multi-Green Units Parts

*Chassis to fit John Deere
Chassis Parts*



Item No	R&R Part No.	OEM Part No.	Description	Qty Req	Price Each	Order Quantity
7	R3256-14	R24-7-BD, R297-3, R32125-2, R3256-51, R51-2170	Washer - 10 Flat	0	0.34	
8	R403212000		Nut - 1/2-13 Acorn	0	6.05	
9	R446136	446136, R446134	Washer - Lock 5/16 Zinc	0	0.14	
10	R455012	R41-8440	Washer - Flat 1/2 x 3/4	0	0.70	
11	R52-2890		Bushing - Flanged	0	0.77	
12	R6040-01-000		Cross Member Assy - Fits Toro	0	65.90	
13	R6040-02-000		Frame Assy - Inner	0	173.25	
14	R6040-03-100		Nylon Bushing - Inner Frame	0	7.65	
15	R6040-03-110		Pivot Pin - Stainless	0	22.95	
16	R6040-03-120		Spring - Compression	0	5.35	
17	R6040-03-130		Cable - Roller Scraper - Stainless	0	31.55	
18	R6040-04-000		Bearing Housing Assy - Adj End	0	328.55	
19	R6040-05-000		Bearing Housing Assy - Motor End	0	113.40	
20	R6040-07-000		Adjusting Handle Assy - Stainless	0	137.20	
21	R6040-08-100		Special Bolt - Damper	0	12.80	
22	R6040-08-500		Grass Shield - SS	0	105.15	
23	R6040-102		Screw - 5/16-18x1-1/4 Fl HD Scs SS	0	1.55	
24	R6040-105		Screw - Grass Shield - Stainless	0	0.65	

All original equipment manufacturers names and part numbers are used for identification purposes only, and we are in no way implying that our products are original equipment parts. Prices subject to change without notice.



Replaces R&R Products Multi-Green Units Parts

*Chassis to fit John Deere
Chassis Parts*



Item No	R&R Part No.	OEM Part No.	Description	Qty Req	Price Each	Order Quantity
25	R6040-106	R32127-33, R3296-27	Locknut - Stainless	0	0.45	
26	R6040-109		Drive Nut - Splined 3/4-16 RH	0	21.60	
26	R6040-110		Drive Nut - Splined 3/4-16 LH	0	21.60	
28	R6042-00-500		Side Plate - Fits Deere	0	146.85	
29	R6042-00-510		Side Plate - Fits Deere	0	151.50	
30	R6042-01-000		Shaft Assy - Fits Deere	0	11.15	
31	R6042-03-500		Mounting Plate	0	59.10	
32	R6043-100		Screw - 5/16-18x1-1/2 FI HD Scs SS	0	1.65	
33	R6050-01-018		Pulley - Large - Vibrating Roller	0	64.95	
34	R6050-101		Screw - 1/4-20x1/2 FI HD Soc CS SS	0	0.54	
36	RET15804	R444762	Locknut - 3/8-16 Top Lock	0	0.66	
38	RP307	EP-300-ZE, REP-300ZE	Washer - 3/8 SAE	0	0.12	
39	R36460		Spring Washer - Belleville	0	3.75	
40	R3659039-1		Screw - Set 1/4-20 x 1/4	0	0.23	
41	R47117000		Retaining Ring External	0	0.79	
42	R6040-04-110		Pressure Pin	0	22.45	
43	R6040-04-120		Bushing - Bearing	0	39.35	
44	R6040-04-130		Adjuster - Bearing Housing	0	66.15	
45	R6040-04-140		Pin - Threaded	0	6.05	
46	R6040-100		Seal	0	7.40	

All original equipment manufacturers names and part numbers are used for identification purposes only, and we are in no way implying that our products are original equipment parts. Prices subject to change without notice.



Replaces R&R Products Multi-Green Units Parts

*Chassis to fit John Deere
Chassis Parts*



Item No	R&R Part No.	OEM Part No.	Description	Qty Req	Price Each	Order Quantity
47	R6040-103		Bearing	0	11.75	
48	R6040-104		Bearing	0	22.35	
49	R150342		Roller End - Smooth UHMW Polyethylene 2	0	22.70	
50	R150348		Section - 2 UHMW Smooth	0	22.70	
51	R150343		Roller Section - 2 Solid Center	0	22.80	
52	R150333	R150447	Washer - Flat Keyed Outer SS	0	5.15	
53	R150334A		Washer - Thrust SAE660 Bronze	0	5.80	
54	R150347T	R150347	Seal - Nonstick Lip	0	6.05	
55	R3296-15	367029, R1503473, R32118-5, R32127-23, R32127-47, R367029, R445748, RG-371, RN101345	Locknut - 3/4-16 Nylon Jam	0	2.15	
56	R150322		Pin - Roll 1/8 x 1 Stainless	0	0.26	
57	R101332		Shaft - 1 SS Rear Roller	0	63.75	
58	R6040-05-100		Mounting Housing	0	78.45	
59	R6050-109		Bearing	0	34.50	
60	R6040-04-100		Bearing Housing	0	165.50	
61	R6040-03-160		Pad - Wear - Nylon	0	4.65	
62	R6042-02-150		Bushing - Lift Yoke	0	9.20	
63	R400336		Bolt - Hex HD 7/16-14 x 1-1/4 GR5	0	0.70	

All original equipment manufacturers names and part numbers are used for identification purposes only, and we are in no way implying that our products are original equipment parts. Prices subject to change without notice.



Replaces R&R Products Multi-Green Units Parts

*Chassis to fit John Deere
Chassis Parts*



Item No	R&R Part No.	OEM Part No.	Description	Qty Req	Price Each	Order Quantity
64	R187-0	3256-25, R3256-25, R7-0032	Washer - Flat 7/16 SAE	0	0.22	
65	R6040-05-250		Drive Coupling w/Pin LH	0	66.90	
65	R6040-05-230		Drive Coupling w/Pin RH	0	66.90	
66	R6042-02-000		Lift Yoke	0	224.25	
67	R11M7012		Pin - Cotter 1/8 x 5/8	0	0.23	
68	RC-10025	R32120-8	Ring - Retaining	0	2.15	
69	R32121-123		Pin - Spring Roll 5/16 x 3/4	0	0.47	

All original equipment manufacturers names and part numbers are used for identification purposes only, and we are in no way implying that our products are original equipment parts. Prices subject to change without notice.