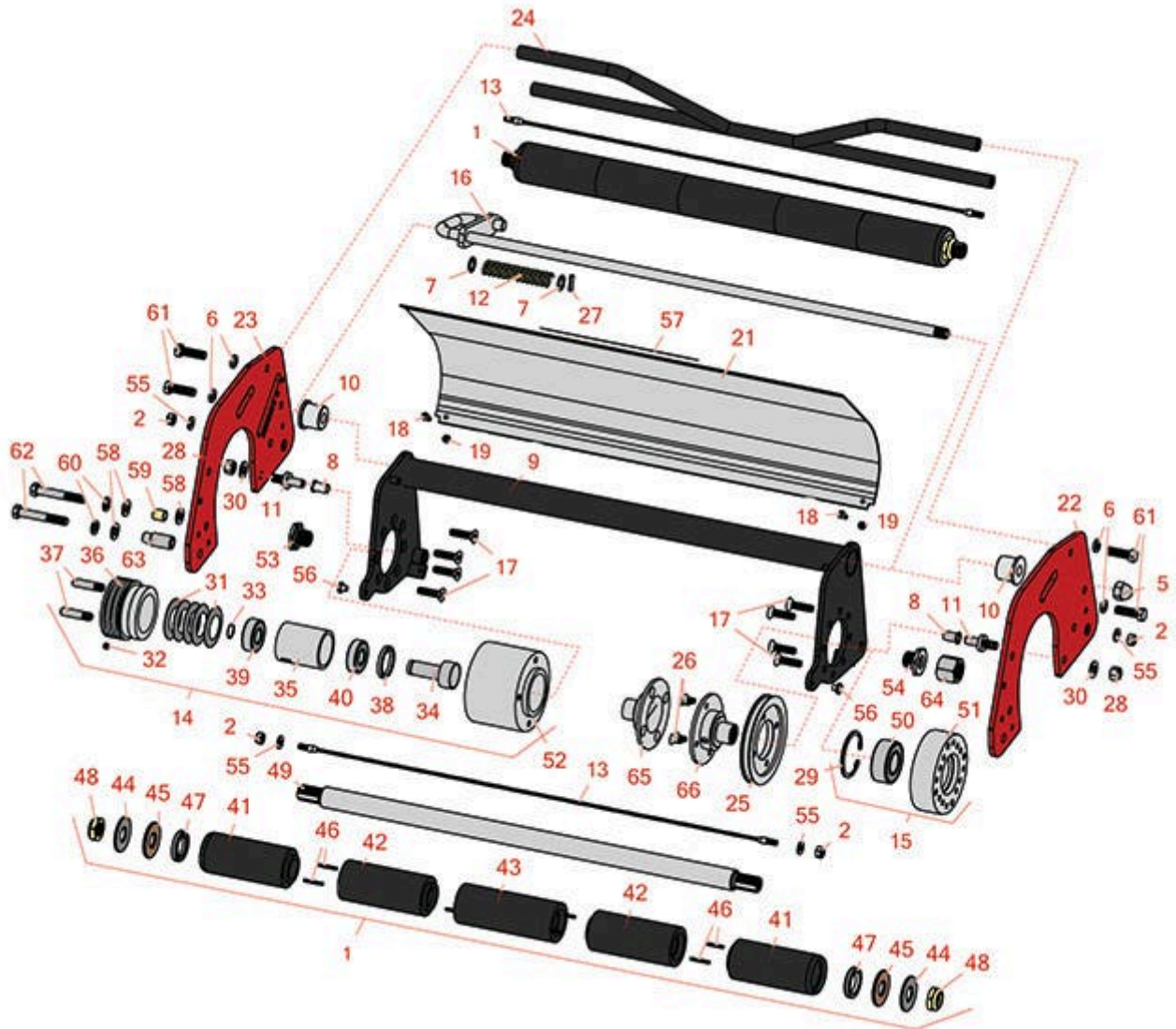




# Replaces R&R Products Multi-Green Units Parts

Chassis to fit Jacobsen II & IV  
Chassis Parts



All original equipment manufacturers names and part numbers are used for identification purposes only, and we are in no way implying that our products are original equipment parts. Prices subject to change without notice.



# Replaces R&R Products Multi-Green Units Parts

Chassis to fit Jacobsen II & IV  
Chassis Parts



Item No	R&R Part No.	OEM Part No.	Description	Qty Req	Price Each	Order Quantity
---------	--------------	--------------	-------------	---------	------------	----------------

## Rollers

1	<b>R101335</b>		Roller - Smooth UHMW Polyethylene	2	<b>186.65</b>	
---	----------------	--	-----------------------------------	---	---------------	--

*Tech Note: Machined from solid UHMW, this low maintenance roller uses a 1" solid stainless steel shaft and requires no grease. UHMW material prevents build-up of debris.:*

## Chassis Parts Available

2	<b>R301504</b>	R32127-24, R32146-17, R3296-16, R3296-42, R915661P, RM40333	Locknut - ESNA 1/4-20	4	<b>0.18</b>	
---	----------------	--	-----------------------	---	-------------	--

5	<b>R403212000</b>		Nut - 1/2-13 Acorn	1	<b>6.05</b>	
---	-------------------	--	--------------------	---	-------------	--

6	<b>R446136</b>	446136, R446134	Washer - Lock 5/16 Zinc	4	<b>0.14</b>	
---	----------------	--------------------	-------------------------	---	-------------	--

7	<b>R455012</b>	R41-8440	Washer - Flat 1/2 x 3/4	1	<b>0.70</b>	
---	----------------	----------	-------------------------	---	-------------	--

8	<b>R52-2890</b>		Bushing - Flanged	2	<b>0.77</b>	
---	-----------------	--	-------------------	---	-------------	--

9	<b>R6040-02-000</b>		Frame Assy - Inner	1	<b>173.25</b>	
---	---------------------	--	--------------------	---	---------------	--

10	<b>R6040-03-100</b>		Nylon Bushing - Inner Frame	2	<b>7.65</b>	
----	---------------------	--	-----------------------------	---	-------------	--

11	<b>R6040-03-110</b>		Pivot Pin - Stainless	2	<b>22.95</b>	
----	---------------------	--	-----------------------	---	--------------	--

12	<b>R6040-03-120</b>		Spring - Compression	1	<b>5.35</b>	
----	---------------------	--	----------------------	---	-------------	--

13	<b>R6040-03-130</b>		Cable - Roller Scraper - Stainless	2	<b>31.55</b>	
----	---------------------	--	------------------------------------	---	--------------	--

14	<b>R6040-04-000</b>		Bearing Housing Assy - Adj End	1	<b>328.55</b>	
----	---------------------	--	--------------------------------	---	---------------	--

15	<b>R6040-05-000</b>		Bearing Housing Assy - Motor End	1	<b>113.40</b>	
----	---------------------	--	----------------------------------	---	---------------	--

16	<b>R6040-07-000</b>		Adjusting Handle Assy - Stainless	1	<b>137.20</b>	
----	---------------------	--	-----------------------------------	---	---------------	--

All original equipment manufacturers names and part numbers are used for identification purposes only, and we are in no way implying that our products are original equipment parts. Prices subject to change without notice.



# Replaces R&R Products Multi-Green Units Parts

Chassis to fit Jacobsen II & IV  
Chassis Parts



Item No	R&R Part No.	OEM Part No.	Description	Qty Req	Price Each	Order Quantity
17	R6040-102		Screw - 5/16-18x1-1/4 Fl HD SCS SS	8	1.55	
18	R6040-105		Screw - Grass Shield - Stainless	2	0.65	
19	R6040-106	R32127-33, R3296-27	Locknut - Stainless	2	0.45	
21	R6041-00-520		Grass Shield - SS	1	105.45	
22	R6043-00-500		Side Plate - Adj. - Fits Jacobsen	1	147.35	
23	R6043-00-510		Side Plate - Fits Jacobsen	1	147.35	
24	R6043-01-000		Bracket Assy - Fits Jacobsen	1	177.90	
25	R6050-01-018		Pulley - Large - Vibrating Roller	1	64.95	
<i>Tech Note: Optional:</i>						
26	R6050-101		Screw - 1/4-20x1/2 Fl HD Soc CS SS	4	0.54	
<i>Tech Note: Optional:</i>						
27	R32121-123		Pin - Spring Roll 5/16 x 3/4	2	0.47	
28	RET15804	R444762	Locknut - 3/8-16 Top Lock	2	0.66	
29	RC-10025	R32120-8	Ring - Retaining	1	2.15	
30	RP307	EP-300-ZE, REP-300ZE	Washer - 3/8 SAE	2	0.12	
31	R36460		Spring Washer - Belleville	5	3.75	
32	R3659039-1		Screw - Set 1/4-20 x 1/4	1	0.23	
33	R47117000		Retaining Ring External	1	0.79	
34	R6040-04-110		Pressure Pin	1	22.45	
35	R6040-04-120		Bushing - Bearing	1	39.35	

All original equipment manufacturers names and part numbers are used for identification purposes only, and we are in no way implying that our products are original equipment parts. Prices subject to change without notice.



# Replaces R&R Products Multi-Green Units Parts

*Chassis to fit Jacobsen II & IV  
Chassis Parts*



Item No	R&R Part No.	OEM Part No.	Description	Qty Req	Price Each	Order Quantity
36	<b>R6040-04-130</b>		Adjuster - Bearing Housing	1	<b>66.15</b>	
37	<b>R6040-04-140</b>		Pin - Threaded	2	<b>6.05</b>	
38	<b>R6040-100</b>		Seal	1	<b>7.40</b>	
39	<b>R6040-103</b>		Bearing	1	<b>11.75</b>	
40	<b>R6040-104</b>		Bearing	1	<b>22.35</b>	
41	<b>R150342</b>		Roller End - Smooth UHMW Polyethylene 2	4	<b>22.70</b>	
42	<b>R150348</b>		Section - 2 UHMW Smooth	4	<b>22.70</b>	
43	<b>R150343</b>		Roller Section - 2 Solid Center	2	<b>22.80</b>	
44	<b>R150333</b>	R150447	Washer - Flat Keyed Outer SS	4	<b>5.15</b>	
45	<b>R150334A</b>		Washer - Thrust SAE660 Bronze	4	<b>5.80</b>	
46	<b>R150322</b>		Pin - Roll 1/8 x 1 Stainless	16	<b>0.26</b>	
47	<b>R150347T</b>	R150347	Seal - Nonstick Lip	4	<b>6.05</b>	
48	<b>R3296-15</b>	367029, R1503473, R32118-5, R32127-23, R32127-47, R367029, R445748, RG-371, RN101345	Locknut - 3/4-16 Nylon Jam	4	<b>2.15</b>	
49	<b>R101332</b>		Shaft - 1 SS Rear Roller	2	<b>63.75</b>	
50	<b>R6050-109</b>		Bearing	1	<b>34.50</b>	
51	<b>R6040-05-100</b>		Mounting Housing	1	<b>78.45</b>	
52	<b>R6040-04-100</b>		Bearing Housing	1	<b>165.50</b>	

All original equipment manufacturers names and part numbers are used for identification purposes only, and we are in no way implying that our products are original equipment parts. Prices subject to change without notice.



# Replaces R&R Products Multi-Green Units Parts

*Chassis to fit Jacobsen II & IV  
Chassis Parts*



Item No	R&R Part No.	OEM Part No.	Description	Qty Req	Price Each	Order Quantity
53	<b>R93-1394</b>		Nut - Splined RH Thrd .812 Long	1	<b>12.25</b>	
54	<b>R94-9214</b>		Nut - Splined LH Thrd .812 Long	1	<b>12.25</b>	
55	<b>R453023</b>	R3256-1, R3256-72	Washer - Flat 1/4	4	<b>0.12</b>	
56	<b>R6040-03-160</b>		Pad - Wear - Nylon	2	<b>4.65</b>	
57	<b>RMT6517</b>		Label - Warning	1	<b>7.25</b>	
58	<b>R453011</b>	3256-24, 453011, R01-166-0100, R01-166-0120, R01-166-0270, R01-166-0500, R01-166-0600, R01-166-0620, R132-4593, R237-12, R24-10-AD, R24-11-AD, R24-11-BD, R24-12-AD, R24-12-BD, R30-9310, R32-8190, R3256-24, R3256-3, R3256-36, R3256-4, R47-9950	Washer - Flat 3/8 SAE Y/Zinc	2	<b>0.11</b>	
59	<b>R345510</b>		Spacer	2	<b>3.55</b>	

All original equipment manufacturers names and part numbers are used for identification purposes only, and we are in no way implying that our products are original equipment parts. Prices subject to change without notice.



# Replaces R&R Products Multi-Green Units Parts

Chassis to fit Jacobsen II & IV  
Chassis Parts



Item No	R&R Part No.	OEM Part No.	Description	Qty Req	Price Each	Order Quantity
60	<b>R3254-6</b>	446142, R01-166-0010, R01-166-0280, R01-166-0610, R12H304, R3253-5, R3254-18, R3290-223, R446140, R446142, R48-9370	Washer - Lock 3/8	2	<b>0.08</b>	
61	<b>R400264</b>	323-7, R01-150-0180, R01-178-0610, R19H1732, R20-48-AD, R20-48-AGD, R32-9160, R3224-3, R323-29, R323-7, R400264, R908035P	Bolt - Hex HD 3/8-16 x 1-1/4	2	<b>0.40</b>	
62	<b>R101526</b>	321-11, R01-150-0970, R01-178-0620, R20-53-AGD, R3224-8, R323-12, R323-31, R323-47	Bolt - Hex HD 3/8-16 x 2-1/2 GR5	2	<b>0.91</b>	
63	<b>R101525</b>		Spacer - Mower Mounting Assy	2	<b>6.55</b>	
64	<b>R345477</b>		Nut - Coupling LH (RH Threads)	0	<b>13.45</b>	
<i>Tech Note: Right Hand Threads:</i>						
65	<b>R6040-05-230</b>		Drive Coupling w/Pin RH	1	<b>66.90</b>	
66	<b>R6040-05-250</b>		Drive Coupling w/Pin LH	1	<b>66.90</b>	

All original equipment manufacturers names and part numbers are used for identification purposes only, and we are in no way implying that our products are original equipment parts. Prices subject to change without notice.