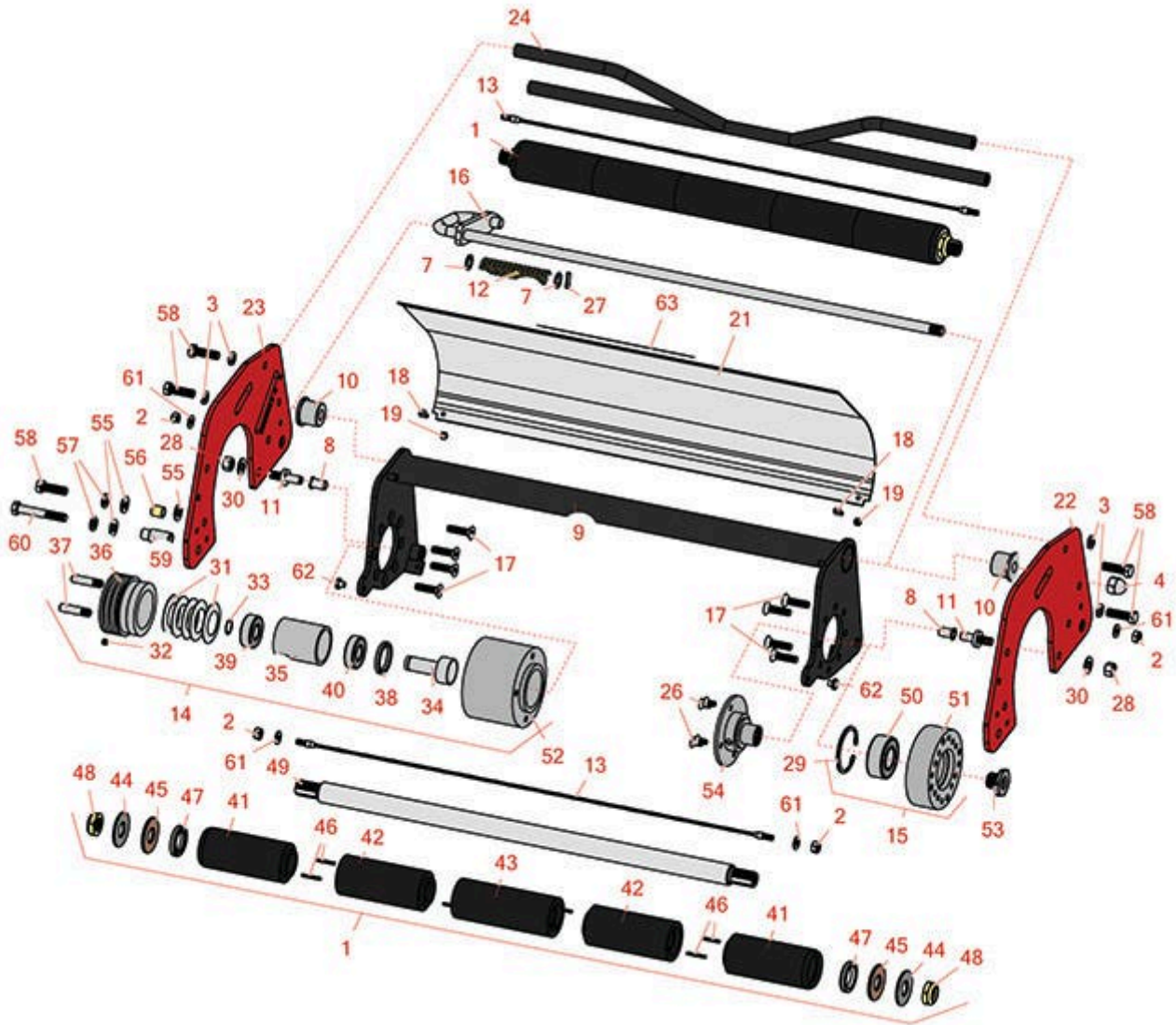




Replaces R&R Products Multi-Green Units Parts

Chassis to fit Jacobsen G-Plex III
Chassis Parts



All original equipment manufacturers names and part numbers are used for identification purposes only, and we are in no way implying that our products are original equipment parts. Prices subject to change without notice.



Replaces R&R Products Multi-Green Units Parts

Chassis to fit Jacobsen G-Plex III
Chassis Parts



Item No	R&R Part No.	OEM Part No.	Description	Qty Req	Price Each	Order Quantity
---------	--------------	--------------	-------------	---------	------------	----------------

Rollers

1	R101335		Roller - Smooth UHMW Polyethylene	0	186.65	
---	----------------	--	-----------------------------------	---	---------------	--

Tech Note: Machined from solid UHMW, this low maintenance roller uses a 1" solid stainless steel shaft and requires no grease. UHMW material prevents build-up of debris.:

Chassis Parts Available

2	R301504	R32127-24, R32146-17, R3296-16, R3296-42, R915661P, RM40333	Locknut - ESNA 1/4-20	4	0.18	
3	R446136	446136, R446134	Washer - Lock 5/16 Zinc	2	0.14	
4	R403212000		Nut - 1/2-13 Acorn	0	6.05	
7	R455012	R41-8440	Washer - Flat 1/2 x 3/4	2	0.70	
8	R52-2890		Bushing - Flanged	2	0.77	
9	R6040-02-000		Frame Assy - Inner	1	173.25	
10	R6040-03-100		Nylon Bushing - Inner Frame	2	7.65	
11	R6040-03-110		Pivot Pin - Stainless	2	22.95	
12	R6040-03-120		Spring - Compression	1	5.35	
13	R6040-03-130		Cable - Roller Scraper - Stainless	2	31.55	
14	R6040-04-000		Bearing Housing Assy - Adj End	1	328.55	
15	R6040-05-000		Bearing Housing Assy - Motor End	1	113.40	
16	R6040-07-000		Adjusting Handle Assy - Stainless	1	137.20	

All original equipment manufacturers names and part numbers are used for identification purposes only, and we are in no way implying that our products are original equipment parts. Prices subject to change without notice.



Replaces R&R Products Multi-Green Units Parts

*Chassis to fit Jacobsen G-Plex III
Chassis Parts*



Item No	R&R Part No.	OEM Part No.	Description	Qty Req	Price Each	Order Quantity
17	R6040-102		Screw - 5/16-18x1-1/4 Fl HD SCS SS	8	1.55	
18	R6040-105		Screw - Grass Shield - Stainless	2	0.65	
19	R6040-106	R32127-33, R3296-27	Locknut - Stainless	2	0.45	
21	R6041-00-520		Grass Shield - SS	1	105.45	
22	R6043-00-500		Side Plate - Adj. - Fits Jacobsen	1	147.35	
23	R6043-00-510		Side Plate - Fits Jacobsen	1	147.35	
24	R6043-01-000		Bracket Assy - Fits Jacobsen	1	177.90	
26	R6050-101		Screw - 1/4-20x1/2 Fl HD Soc CS SS	4	0.54	
27	R32121-123		Pin - Spring Roll 5/16 x 3/4	2	0.47	
28	RET15804	R444762	Locknut - 3/8-16 Top Lock	2	0.66	
29	RC-10025	R32120-8	Ring - Retaining	1	2.15	
30	RP307	EP-300-ZE, REP-300ZE	Washer - 3/8 SAE	2	0.12	
31	R36460		Spring Washer - Belleville	5	3.75	
32	R3659039-1		Screw - Set 1/4-20 x 1/4	1	0.23	
33	R47117000		Retaining Ring External	1	0.79	
34	R6040-04-110		Pressure Pin	1	22.45	
35	R6040-04-120		Bushing - Bearing	1	39.35	
36	R6040-04-130		Adjuster - Bearing Housing	1	66.15	
37	R6040-04-140		Pin - Threaded	2	6.05	
38	R6040-100		Seal	1	7.40	

All original equipment manufacturers names and part numbers are used for identification purposes only, and we are in no way implying that our products are original equipment parts. Prices subject to change without notice.



Replaces R&R Products Multi-Green Units Parts

Chassis to fit Jacobsen G-Plex III
Chassis Parts



Item No	R&R Part No.	OEM Part No.	Description	Qty Req	Price Each	Order Quantity
39	R6040-103		Bearing	1	11.75	
40	R6040-104		Bearing	1	22.35	
41	R150342		Roller End - Smooth UHMW Polyethylene 2	4	22.70	
42	R150348		Section - 2 UHMW Smooth	4	22.70	
43	R150343		Roller Section - 2 Solid Center	2	22.80	
44	R150333	R150447	Washer - Flat Keyed Outer SS	4	5.15	
45	R150334A		Washer - Thrust SAE660 Bronze	4	5.80	
46	R150322		Pin - Roll 1/8 x 1 Stainless	16	0.26	
47	R150347T	R150347	Seal - Nonstick Lip	4	6.05	
48	R3296-15	367029, R1503473, R32118-5, R32127-23, R32127-47, R367029, R445748, RG-371, RN101345	Locknut - 3/4-16 Nylon Jam	4	2.15	
49	R101332		Shaft - 1 SS Rear Roller	2	63.75	
50	R6050-109		Bearing	1	34.50	
51	R6040-05-100		Mounting Housing	1	78.45	
52	R6040-04-100		Bearing Housing	1	165.50	
53	R93-1394		Nut - Splined RH Thrd .812 Long	1	12.25	
54	R6040-05-230		Drive Coupling w/Pin RH	1	66.90	

All original equipment manufacturers names and part numbers are used for identification purposes only, and we are in no way implying that our products are original equipment parts. Prices subject to change without notice.



Replaces R&R Products Multi-Green Units Parts

*Chassis to fit Jacobsen G-Plex III
Chassis Parts*



Item No	R&R Part No.	OEM Part No.	Description	Qty Req	Price Each	Order Quantity
55	R453011	3256-24, 453011, R01-166-0100, R01-166-0120, R01-166-0270, R01-166-0500, R01-166-0600, R01-166-0620, R132-4593, R237-12, R24-10-AD, R24-11-AD, R24-11-BD, R24-12-AD, R24-12-BD, R30-9310, R32-8190, R3256-24, R3256-3, R3256-36, R3256-4, R47-9950	Washer - Flat 3/8 SAE Y/Zinc	4	0.11	
56	R345510		Spacer	2	3.55	
57	R3254-6	446142, R01-166-0010, R01-166-0280, R01-166-0610, R12H304, R3253-5, R3254-18, R3290-223, R446140, R446142, R48-9370	Washer - Lock 3/8	2	0.08	

All original equipment manufacturers names and part numbers are used for identification purposes only, and we are in no way implying that our products are original equipment parts. Prices subject to change without notice.



Replaces R&R Products Multi-Green Units Parts

Chassis to fit Jacobsen G-Plex III
Chassis Parts



Item No	R&R Part No.	OEM Part No.	Description	Qty Req	Price Each	Order Quantity
58	R400264	323-7, R01-150-0180, R01-178-0610, R19H1732, R20-48-AD, R20-48-AGD, R32-9160, R3224-3, R323-29, R323-7, R400264, R908035P	Bolt - Hex HD 3/8-16 x 1-1/4	4	0.40	
59	R101525		Spacer - Mower Mounting Assy	2	6.55	
60	R101526	321-11, R01-150-0970, R01-178-0620, R20-53-AGD, R3224-8, R323-12, R323-31, R323-47	Bolt - Hex HD 3/8-16 x 2-1/2 GR5	2	0.91	
61	R453023	R3256-1, R3256-72	Washer - Flat 1/4	4	0.12	
62	R6040-03-160		Pad - Wear - Nylon	2	4.65	
63	RMT6517		Label - Warning	1	7.25	

All original equipment manufacturers names and part numbers are used for identification purposes only, and we are in no way implying that our products are original equipment parts. Prices subject to change without notice.