

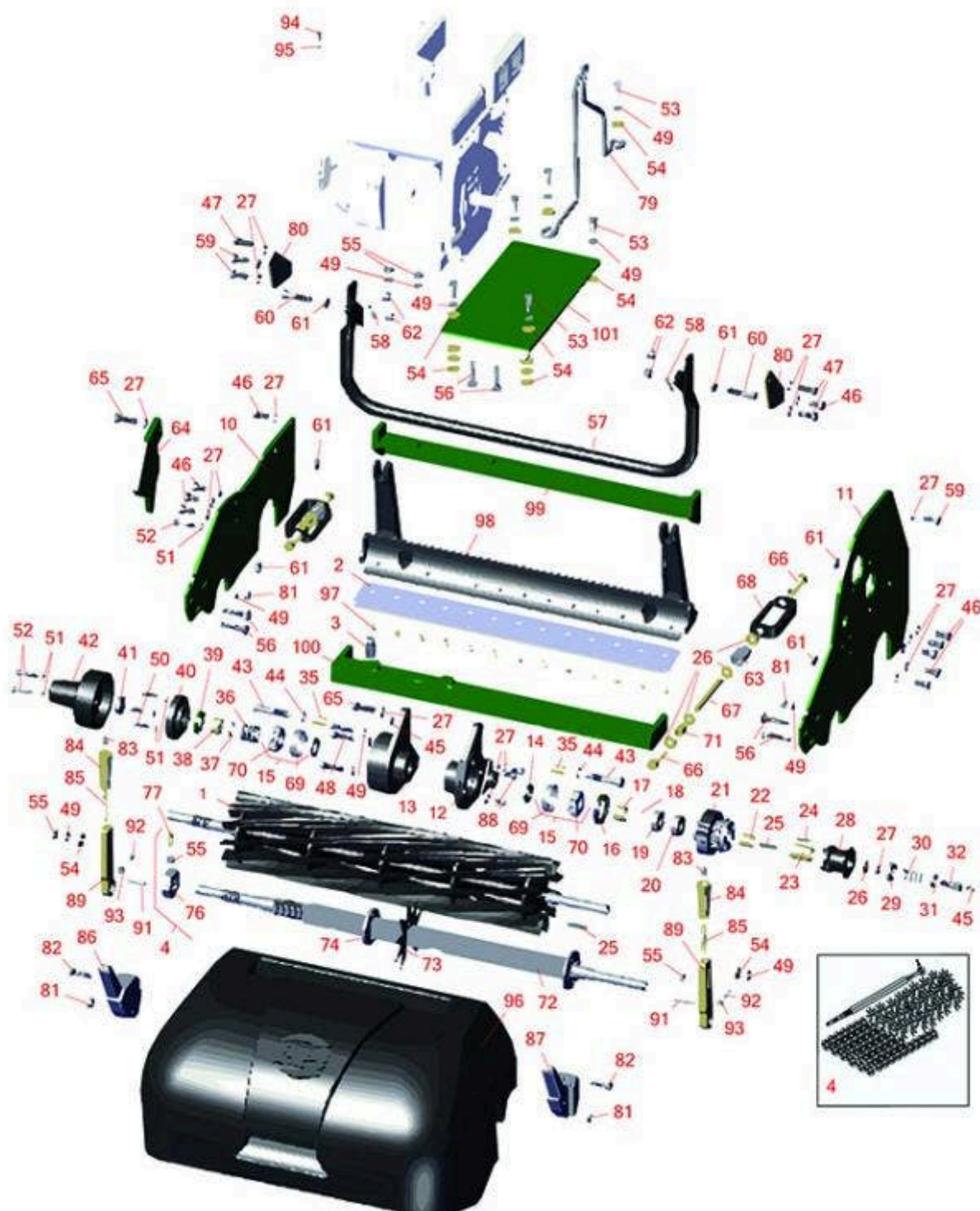


Replaces R&R Products Greens Max

4026 Parts

Cutting Unit

Reel & Bedknife



All original equipment manufacturers names and part numbers are used for identification purposes only, and we are in no way implying that our products are original equipment parts. Prices subject to change without notice.



Replaces R&R Products Greens Max

4026 Parts

Cutting Unit
Reel & Bedknife



Item No	R&R Part No.	OEM Part No.	Description	Qty Req	Price Each	Order Quantity
---------	--------------	--------------	-------------	---------	------------	----------------

R&R Reels to fit 4018, Lifetime Guaranteed

1	R101510		Reel - 14 Blade	1	454.15	
---	----------------	--	-----------------	---	---------------	--

Detail Description: R&R Reel blades are manufactured from high carbon-boron alloy steel and then hardened to RC46-49 to match the temper of our bedknives and original equipment bedknives. All R&R Reels are cylindrically ground on bearing surfaces and then relief ground. Reels are then precision computer balanced for extended bearing and reel life. R&R Products Reels are guaranteed against defects in material and workmanship for the life of the reel under normal use.:

1	R5000095		Reel - 11 Blade	1	291.95	
---	-----------------	--	-----------------	---	---------------	--

Detail Description: R&R Reel blades are manufactured from high carbon-boron alloy steel and then hardened to RC46-49 to match the temper of our bedknives and original equipment bedknives. All R&R Reels are cylindrically ground on bearing surfaces and then relief ground. Reels are then precision computer balanced for extended bearing and reel life. R&R Products Reels are guaranteed against defects in material and workmanship for the life of the reel under normal use.:

R&R Reels to fit 4022, Lifetime Guaranteed

1	R101515		Reel - 14 Blade	1	456.15	
---	----------------	--	-----------------	---	---------------	--

Detail Description: R&R Reel blades are manufactured from high carbon-boron alloy steel and then hardened to RC46-49 to match the temper of our bedknives and original equipment bedknives. All R&R Reels are cylindrically ground on bearing surfaces and then relief ground. Reels are then precision computer balanced for extended bearing and reel life. R&R Products Reels are guaranteed against defects in material and workmanship for the life of the reel under normal use.:

1	R5000148	R50000148, R503616	Reel - 11 Blade	1	294.10	
---	-----------------	-----------------------	-----------------	---	---------------	--

Detail Description: R&R Reel blades are manufactured from high carbon-boron alloy steel and then hardened to RC46-49 to match the temper of our bedknives and original equipment bedknives. All R&R Reels are cylindrically ground on bearing surfaces and then relief ground. Reels are then precision computer balanced for extended bearing and reel life. R&R Products Reels are guaranteed against defects in material and workmanship for the life of the reel under normal use.:

R&R Reels to fit 4026, Lifetime Guaranteed

1	R5000416		Reel - 11 Blade	1	364.45	
---	-----------------	--	-----------------	---	---------------	--

All original equipment manufacturers names and part numbers are used for identification purposes only, and we are in no way implying that our products are original equipment parts. Prices subject to change without notice.



Replaces R&R Products Greens Max

4026 Parts

Cutting Unit

Reel & Bedknife



Item No	R&R Part No.	OEM Part No.	Description	Qty Req	Price Each	Order Quantity
---------	--------------	--------------	-------------	---------	------------	----------------

Detail Description: R&R Reel blades are manufactured from high carbon-boron alloy steel and then hardened to RC46-49 to match the temper of our bedknives and original equipment bedknives. All R&R Reels are cylindrically ground on bearing surfaces and then relief ground. Reels are then precision computer balanced for extended bearing and reel life. R&R Products Reels are guaranteed against defects in material and workmanship for the life of the reel under normal use.:

1	R101500		Reel - 9 Blade	1	346.95	
---	----------------	--	----------------	---	---------------	--

Detail Description: R&R Reel blades are manufactured from high carbon-boron alloy steel and then hardened to RC46-49 to match the temper of our bedknives and original equipment bedknives. All R&R Reels are cylindrically ground on bearing surfaces and then relief ground. Reels are then precision computer balanced for extended bearing and reel life. R&R Products Reels are guaranteed against defects in material and workmanship for the life of the reel under normal use.:

1	R5000417	R5003652	Reel - 7 Blade	1	348.35	
---	-----------------	----------	----------------	---	---------------	--

Detail Description: R&R Reel blades are manufactured from high carbon-boron alloy steel and then hardened to RC46-49 to match the temper of our bedknives and original equipment bedknives. All R&R Reels are cylindrically ground on bearing surfaces and then relief ground. Reels are then precision computer balanced for extended bearing and reel life. R&R Products Reels are guaranteed against defects in material and workmanship for the life of the reel under normal use.:

R&R Bedknives to fit 4018, Lifetime Guaranteed

2	R5000098		Bedknife - Low Cut 18 in	1	46.75	
---	-----------------	--	--------------------------	---	--------------	--

Detail Description: R&R Bedknives are manufactured from high carbon-boron alloy steel and then hardened to RC46-49 to match the temper of our reel blades and original equipment reels. Bedknives are surface ground on the top and front edge and straightened three times before being packaged with oil for rust prevention. All R&R Bedknives now have an increased front edge grind for added life. All R&R Bedknives are guaranteed against defects in material and workmanship under normal use for the life of the part.:

2	R5002888	R5001056	Bedknife - Tournament 18" - .082-.109	1	49.95	
---	-----------------	----------	--	---	--------------	--

Detail Description: R&R Bedknives are manufactured from high carbon-boron alloy steel and then hardened to RC46-49 to match the temper of our reel blades and original equipment reels. Bedknives are surface ground on the top and front edge and straightened three times before being packaged with oil for rust prevention. All R&R Bedknives now have an increased front edge grind for added life. All R&R Bedknives are guaranteed against defects in material and workmanship under normal use for the life of the part.:

All original equipment manufacturers names and part numbers are used for identification purposes only, and we are in no way implying that our products are original equipment parts. Prices subject to change without notice.



Replaces R&R Products Greens Max

4026 Parts

Cutting Unit

Reel & Bedknife



Item No	R&R Part No.	OEM Part No.	Description	Qty Req	Price Each	Order Quantity
---------	--------------	--------------	-------------	---------	------------	----------------

2	R101430		Bedknife - Micro Cut	1	47.55	
---	----------------	--	----------------------	---	--------------	--

Detail Description: R&R Bedknives are manufactured from high carbon-boron alloy steel and then hardened to RC46-49 to match the temper of our reel blades and original equipment reels. Bedknives are surface ground on the top and front edge and straightened three times before being packaged with oil for rust prevention. All R&R Bedknives now have an increased front edge grind for added life. All R&R Bedknives are guaranteed against defects in material and workmanship under normal use for the life of the part.:

R&R Bedknives to fit 4022, Lifetime Guaranteed

2	R4234900	R101258, R5000927	Bedknife - Tournament .063-.110	1	43.65	
---	-----------------	----------------------	------------------------------------	---	--------------	--

Detail Description: R&R Bedknives are manufactured from high carbon-boron alloy steel and then hardened to RC46-49 to match the temper of our reel blades and original equipment reels. Bedknives are surface ground on the top and front edge and straightened three times before being packaged with oil for rust prevention. All R&R Bedknives now have an increased front edge grind for added life. All R&R Bedknives are guaranteed against defects in material and workmanship under normal use for the life of the part.:

2	R503479	R101259, R503029	Bedknife - Tournament .094-.156 HOC	1	41.75	
---	----------------	---------------------	--	---	--------------	--

Detail Description: R&R Bedknives are manufactured from high carbon-boron alloy steel and then hardened to RC46-49 to match the temper of our reel blades and original equipment reels. Bedknives are surface ground on the top and front edge and straightened three times before being packaged with oil for rust prevention. All R&R Bedknives now have an increased front edge grind for added life. All R&R Bedknives are guaranteed against defects in material and workmanship under normal use for the life of the part.:

2	R503478	R101260, R503028, R549504, R549749	Bedknife - Thin .125-.219 HOC	1	41.75	
---	----------------	---	----------------------------------	---	--------------	--

Detail Description: R&R Bedknives are manufactured from high carbon-boron alloy steel and then hardened to RC46-49 to match the temper of our reel blades and original equipment reels. Bedknives are surface ground on the top and front edge and straightened three times before being packaged with oil for rust prevention. All R&R Bedknives now have an increased front edge grind for added life. All R&R Bedknives are guaranteed against defects in material and workmanship under normal use for the life of the part.:

2	R503477	R101261, R503027, R549397	Bedknife - Thick .156-.438 HOC	1	40.05	
---	----------------	---------------------------------	-----------------------------------	---	--------------	--

All original equipment manufacturers names and part numbers are used for identification purposes only, and we are in no way implying that our products are original equipment parts. Prices subject to change without notice.



Replaces R&R Products Greens Max

4026 Parts

Cutting Unit

Reel & Bedknife



Item No	R&R Part No.	OEM Part No.	Description	Qty Req	Price Each	Order Quantity
---------	--------------	--------------	-------------	---------	------------	----------------

Detail Description: R&R Bedknives are manufactured from high carbon-boron alloy steel and then hardened to RC46-49 to match the temper of our reel blades and original equipment reels. Bedknives are surface ground on the top and front edge and straightened three times before being packaged with oil for rust prevention. All R&R Bedknives now have an increased front edge grind for added life. All R&R Bedknives are guaranteed against defects in material and workmanship under normal use for the life of the part.:

2	R5002887		Bedknife - Micro Cut - .082-.109	1	45.35	
---	-----------------	--	----------------------------------	---	--------------	--

Detail Description: R&R Bedknives are manufactured from high carbon-boron alloy steel and then hardened to RC46-49 to match the temper of our reel blades and original equipment reels. Bedknives are surface ground on the top and front edge and straightened three times before being packaged with oil for rust prevention. All R&R Bedknives now have an increased front edge grind for added life. All R&R Bedknives are guaranteed against defects in material and workmanship under normal use for the life of the part.:

2	R5000413		Bedknife - 26 Thin 1/8	1	51.75	
---	-----------------	--	------------------------	---	--------------	--

Detail Description: R&R Bedknives are manufactured from high carbon-boron alloy steel and then hardened to RC46-49 to match the temper of our reel blades and original equipment reels. Bedknives are surface ground on the top and front edge and straightened three times before being packaged with oil for rust prevention. All R&R Bedknives now have an increased front edge grind for added life. All R&R Bedknives are guaranteed against defects in material and workmanship under normal use for the life of the part.:

2	R5000414		Bedknife - 26 Thick 3/16	1	49.95	
---	-----------------	--	--------------------------	---	--------------	--

Detail Description: R&R Bedknives are manufactured from high carbon-boron alloy steel and then hardened to RC46-49 to match the temper of our reel blades and original equipment reels. Bedknives are surface ground on the top and front edge and straightened three times before being packaged with oil for rust prevention. All R&R Bedknives now have an increased front edge grind for added life. All R&R Bedknives are guaranteed against defects in material and workmanship under normal use for the life of the part.:

2	R5000141		Bedknife - Heavy 26 in	1	58.25	
---	-----------------	--	------------------------	---	--------------	--

Detail Description: R&R Bedknives are manufactured from high carbon-boron alloy steel and then hardened to RC46-49 to match the temper of our reel blades and original equipment reels. Bedknives are surface ground on the top and front edge and straightened three times before being packaged with oil for rust prevention. All R&R Bedknives now have an increased front edge grind for added life. All R&R Bedknives are guaranteed against defects in material and workmanship under normal use for the life of the part.:

R&R Razor Tool Steel Bedknives to fit 4022, Lifetime Guaranteed

All original equipment manufacturers names and part numbers are used for identification purposes only, and we are in no way implying that our products are original equipment parts. Prices subject to change without notice.



Replaces R&R Products Greens Max

4026 Parts

Cutting Unit
Reel & Bedknife



Item No	R&R Part No.	OEM Part No.	Description	Qty Req	Price Each	Order Quantity
---------	--------------	--------------	-------------	---------	------------	----------------

2	R101520		Bedknife - Razor Tool Steel - 22 Micro Cut	1	99.65	
---	---------	--	---	---	-------	--

Detail Description: R&R Razor bedknives are manufactured from premium alloy tool steel steel and then hardened to RC48-51 to match the temper of our Razor reel blades and original equipment premium series reels. Bedknives are surface ground on the top and front edge and specially packaged for rust prevention. All R&R Bedknives now have an increased front edge grind for added life. All R&R Bedknives are guaranteed against defects in material and workmanship under normal use for the life of the part. You can expect up to double the life over standard bedknives.:

2	R101521		Bedknife - Razor Tool Steel - 22 Tournament Cut	1	99.65	
---	---------	--	--	---	-------	--

Detail Description: R&R Razor bedknives are manufactured from premium alloy tool steel steel and then hardened to RC48-51 to match the temper of our Razor reel blades and original equipment premium series reels. Bedknives are surface ground on the top and front edge and specially packaged for rust prevention. All R&R Bedknives now have an increased front edge grind for added life. All R&R Bedknives are guaranteed against defects in material and workmanship under normal use for the life of the part. You can expect up to double the life over standard bedknives.:

Service Tools

3	R101272T		Bedknife Screw Driver Tool	0	37.45	
---	----------	--	-------------------------------	---	-------	--

Tech Note: Easily install and remove bed knife screws with the help of a ratchet. Tool manufactured with hardened alloy steel.:

Detail Description: Easily install and remove bed knife screws with the help of a ratchet. Tool manufactured with hardened alloy steel.:

Verticut Conversion Kits to fit 4022

4	R101164		Vertical Mower Conversion Kit - Fits 22 Only	1	499.75	
---	---------	--	---	---	--------	--

Detail Description: Includes:1 ea. R101163 Shaft, R352437 Nut, 26 ea. R101160 Vertical Mower Blades & 76 R35221 Nylon Spacers:

Other Parts Available

10	R2811122G		Frame - RH - Green	1	178.70	
----	-----------	--	--------------------	---	--------	--

All original equipment manufacturers names and part numbers are used for identification purposes only, and we are in no way implying that our products are original equipment parts. Prices subject to change without notice.



Replaces R&R Products Greens Max

4026 Parts

Cutting Unit
Reel & Bedknife



Item No	R&R Part No.	OEM Part No.	Description	Qty Req	Price Each	Order Quantity
11	R2811121G		Frame - LH - Green	1	218.10	
12	R1000446		Bearing Housing - LH	1	143.80	
13	R1000447		Bearing Housing - RH	1	136.95	
<i>Detail Description: Includes R545940, R366650, R254-79 & R302-5:</i>						
14	R366650		Seal	2	8.05	
15	R500534	R2208006, RPT230030, RZS482621	Bearing - with Cup	2	12.40	
<i>Detail Description: Kit includes: 1 ea R254-78- Bearing Cone & R254-79 Bearing Cone:</i>						
16	R366649	RZS481024	Seal	1	3.45	
17	R366645		Spacer - Reel	1	9.55	
18	R458461	458461, R32151-34, R453461	Snap Ring	1	1.20	
19	R366652		Bearing	1	12.50	
20	R365229	365229, R325229	Bearing	1	17.45	
21	R2811185		Pulley	1	418.85	
22	R366646		Spacer	1	8.95	
23	R340462		Drive Coupling	1	44.65	
24	R345556	345556	Key - Sq 1/8 x 1	1	1.75	
25	R320774		Key - Sq 3/16 x 1-1/4	2	1.60	
26	R366653	R71-9310	Spacer	1	4.05	

All original equipment manufacturers names and part numbers are used for identification purposes only, and we are in no way implying that our products are original equipment parts. Prices subject to change without notice.



Replaces R&R Products Greens Max

4026 Parts

Cutting Unit
Reel & Bedknife



Item No	R&R Part No.	OEM Part No.	Description	Qty Req	Price Each	Order Quantity
27	R3254-6	446142, R01-166-0010, R01-166-0280, R01-166-0610, R12H304, R3253-5, R3254-18, R3290-223, R446140, R446142, R48-9370	Washer - Lock 3/8	17	0.08	
28	R5002727		Clutch - Reel	1	160.30	
29	R3004368		Retainer - Spring	1	12.45	
30	R3006061		Spring	1	6.90	
31	R3004369		Retainer - Spring	1	12.95	
32	R366651		Bolt - Special	1	23.60	
35	R545940	R2500759	Bushing	2	8.50	
36	R363047	R348846	Spring - Reel	1	5.20	
37	R304745		Washer - Reel	1	0.74	
38	R364900		Nut - Reel Tension	1	10.30	
39	R364170	R253-118, R366648, R62-3400	Seal	1	5.75	
40	R164041		Seal Carrier - Reel - Incl Seal	1	46.85	

All original equipment manufacturers names and part numbers are used for identification purposes only, and we are in no way implying that our products are original equipment parts. Prices subject to change without notice.



Replaces R&R Products Greens Max

4026 Parts

Cutting Unit
Reel & Bedknife



Item No	R&R Part No.	OEM Part No.	Description	Qty Req	Price Each	Order Quantity
41	R3296-15	367029, R1503473, R32118-5, R32127-23, R32127-47, R367029, R445748, RG-371, RN101345	Locknut - 3/4-16 Nylon Jam	1	2.30	
42	R2000064		Cover - Reel	1	74.05	
43	R347169	R365501	Stud - Backing RH 2-5/16	2	32.50	
44	R454017		Shim - Bed Bar Bolt	2	3.05	
45	R302-5	R173-0, R21-6010, R255825, R302-37, R302-47, R302-57, R302-58, R302-6, R31-0300, R32-9660, R471214, R471223, R471226, R60-0800, R62-3880, R92-4181, RJD7797, RJD7842, RJD7844, RM0004, RZS48114-04	Fitting - Grease	1	0.30	
46	R400258	R01-150-0800, R01-178-0600, R01-178-0606, R20-45-AD, R31-0200, R31-9910, R3224-1, R323-4	Bolt - Hex HD 3/8-16 x 3/4	9	0.54	

All original equipment manufacturers names and part numbers are used for identification purposes only, and we are in no way implying that our products are original equipment parts. Prices subject to change without notice.



Replaces R&R Products Greens Max

4026 Parts

Cutting Unit
Reel & Bedknife



Item No	R&R Part No.	OEM Part No.	Description	Qty Req	Price Each	Order Quantity
47	RF3205	R400262	Bolt - Hex HD 3/8-16 x 1	2	0.82	
48	R434036	R3274-18	Screw - Soc HD 5/16-18 x 1-1/4	3	2.50	
49	R446136	446136, R446134	Washer - Lock 5/16 Zinc	6	0.15	
50	R434028		Bolt - Soc HD Cap 1/4-20 x 3/4	3	1.30	
51	R3253-3	446130, R01-166-0070, R01-166-0410, R23-9-GD, R24-7150, R352-167, R446128, R446130	Washer - Lock 1/4	5	0.12	
52	R400112	R400114	Bolt - Hex HD 1/4-20 x 1-1/4	4	0.40	
53	R322-5	322-5, R01-178-0508, R19H1905, R20-26-AD, R20-26-AGD, R30-9000, R400188, R513341, R519755, R908019P	Bolt - Hex HD 5/16-18 x 1	6	0.42	
54	R348849		Shim Washer - 5/16 x 7/8 x .010	0	1.25	
54	R364263		Shim Washer - 5/16 x 7/8 x 1/16	0	1.65	
54	R364441	364441, R303873, R366641	Washer - Flat 5/16x7/8	0	2.30	

All original equipment manufacturers names and part numbers are used for identification purposes only, and we are in no way implying that our products are original equipment parts. Prices subject to change without notice.



Replaces R&R Products Greens Max

4026 Parts

Cutting Unit
Reel & Bedknife



Item No	R&R Part No.	OEM Part No.	Description	Qty Req	Price Each	Order Quantity
55	R443106	3218-2, 443106, R01-188-0518, R09003, R22-12-AJD, R32111-4, R3217-4, R3217-6, R513295, R513412, R915112P, R915978, R915979	Nut - 5/16-18 Y/Zinc Plated	4	0.20	
56	R441677		Bolt - Carriage 5/16-18 x 1-1/2	4	0.69	
57	R1000018		Kickstand - 18 in	1	159.65	
57	R132674		Kickstand - 22 in	1	161.25	
57	R1000019		Kickstand - 26 in	1	164.80	
58	R364164		Spring	2	8.65	
59	R400260	R01-178-0605, R18-4100, R19-8270, R323-3, R323-33, R323-34, R323-5	Bolt - Hex HD 3/8-16 x 7/8	4	0.79	
60	R400268		Bolt - Hex HD 3/8-16 x 1-3/4	2	0.78	
61	R3218-3	3218-3, R01-191-0616, R22-13-AJKD, R443810, R915236P	Nut - 3/8-16 Jam	4	0.41	
62	R444850		Nut - 3/8-16 Jam Center Lock	4	0.99	

All original equipment manufacturers names and part numbers are used for identification purposes only, and we are in no way implying that our products are original equipment parts. Prices subject to change without notice.



Replaces R&R Products Greens Max

4026 Parts

Cutting Unit
Reel & Bedknife



Item No	R&R Part No.	OEM Part No.	Description	Qty Req	Price Each	Order Quantity
63	R366709		Spring	2	6.25	
64	R3001644G		Weight - Green	1	45.75	
65	R400264	323-7, R01-150-0180, R01-178-0610, R19H1732, R20-48-AD, R20-48-AGD, R32-9160, R3224-3, R323-29, R323-7, R400264, R908035P	Bolt - Hex HD 3/8-16 x 1-1/4	1	0.42	
66	R366726		Bolt - Special - Bed Knife Adj.	4	16.15	
67	R366727		Rod - Bedknife Block	2	6.05	
68	R3001600		Block - Bedknife Adjusting	2	25.15	
69	R254-79	R01-103-0060, R01-103-0130, R1-633584, R252-106, R255820, R32-7800, R32-9590, R4121175, R70030-50301, R808088, RB4015, RG-372, RJD8226	Cup - Bearing	2	3.40	

Detail Description: Use R254-79M installation mandrel to properly install race.:

All original equipment manufacturers names and part numbers are used for identification purposes only, and we are in no way implying that our products are original equipment parts. Prices subject to change without notice.



Replaces R&R Products Greens Max

4026 Parts

Cutting Unit
Reel & Bedknife



Item No	R&R Part No.	OEM Part No.	Description	Qty Req	Price Each	Order Quantity
70	R254-78	R01-102-0060, R01-102-0130, R1-633585, R255815, R32-7790, R32-9580, R385174, R4121174, R4135152, R70030-50302, R93-4813, RB4512, RG-373, RJD8188	Tapered Bearing Cone	2	6.40	
71	R367512		Spacer - Bedknife Adj	2	4.15	
72	R101163		Shaft - V-Cut Fits Jac 422/522	1	234.95	
73	R101160		Verti-Cut Blade - Fits 22 Gm	26	7.65	
73	R101160C		Verti-Cut Blade - Fits 22 Gm Carbide Tipped	26	17.95	
74	R352221	R841360	Spacer - Nylon V-Cut Shaft	76	1.60	
76	R352437		Nut - V-Cut Shaft	1	11.95	
77	R412017		Screw - Sq. HD Set	1	1.35	
79	R3006118		Lift Hook	1	42.70	
80	R366796		Bracket - Kickstand	2	33.15	
81	R444718	444718	Nut - 5/16-18 Center Lock YZ	4	0.48	
82	R400190	R01-150-0720, R01-178-0510, R30-8680, R322-6, R513343	Bolt - Hex HD 5/16-18 x 1-1/4 GR5	2	0.42	

All original equipment manufacturers names and part numbers are used for identification purposes only, and we are in no way implying that our products are original equipment parts. Prices subject to change without notice.



Replaces R&R Products Greens Max

4026 Parts

Cutting Unit
Reel & Bedknife



Item No	R&R Part No.	OEM Part No.	Description	Qty Req	Price Each	Order Quantity
83	R471219	471219, R30-8360, R302-2, R302-24, R302-31, R471231, RJD7759, RJD7798	Zerk - Grease	2	0.45	
84	R365009	R3005692, R365170	Knob - Adjusting Roller	2	20.40	
85	R343616	343616	Stud	2	7.90	
86	R241827		Bracket - LH Grass Catcher	1	76.20	
87	R241828		Bracket - RH Grass Catcher	1	76.20	
88	R434051		Bolt - Soc HD Cap 5/16-18 x 1/2	3	1.40	
89	R2000072		Bracket - Roller	2	21.55	
91	R461339		Pin - Grooved Roller Bkt	2	0.91	
92	R352737		Screw - Set 1/4 x 7/8 Sq Head	2	0.72	
93	R443102	R01-188-0420, R22-11-AJD, R3217-5	Nut - 1/4-20 Yellow Zinc	7	0.23	
94	R300104		Screw - Button HD Cap 10-32 x 5/8	1	0.34	
95	R444312	R22-9-BJD, R26-2360, R26-4370, R3219-12, R3219-14, R48-9280, R513287, R915561	Nut - 10-32	1	0.08	

All original equipment manufacturers names and part numbers are used for identification purposes only, and we are in no way implying that our products are original equipment parts. Prices subject to change without notice.



Replaces R&R Products Greens Max

4026 Parts

Cutting Unit
Reel & Bedknife



Item No	R&R Part No.	OEM Part No.	Description	Qty Req	Price Each	Order Quantity
96	R101545		Grass Catcher - RR Fits 18 in	1	302.35	
96	R101546		Grass Catcher - Fits 22 in	1	312.35	
96	R101547		Grass Catcher - Fits 26 in	1	321.10	
97	R101272	R3009138, R402578, R800813	Screw - Bedknife 1/4-20 x 1/2	13	0.35	
98	R5000102		Bed Bar - 18 in	1	317.15	
98	R5000457	R2000075	Bed Bar - 22 in	1	332.95	
98	R5000412		Bed Bar - 26 in	1	332.95	
99	R1000020G		Rear Crossbar - 18 in - Green	1	224.75	
99	R1000838G		Rear Crossbar - 22 in - Green	1	229.80	
99	R1000021G		Rear Crossbar - 26 in - Green	1	287.80	
100	R1000022G		Front Crossbar - 18 in - Green	1	125.30	
100	R1000839G		Front Crossbar - 22 in - Green	1	126.90	
100	R1000023G		Front Crossbar - 26 in - Green	1	133.85	
101	R5002848G		Engine Base - Green	1	38.20	

All original equipment manufacturers names and part numbers are used for identification purposes only, and we are in no way implying that our products are original equipment parts. Prices subject to change without notice.