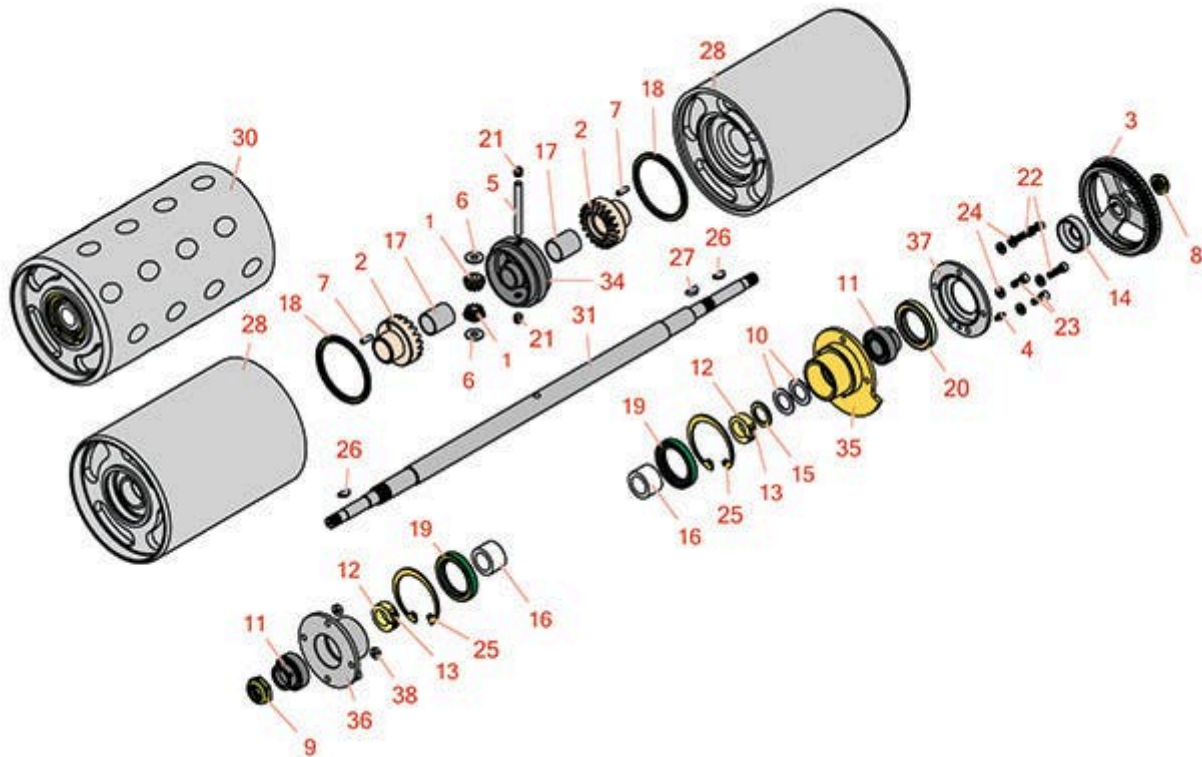




# Replaces R&R Products Greens Max

## 4022 Parts

*Traction Unit  
Differential*



All original equipment manufacturers names and part numbers are used for identification purposes only, and we are in no way implying that our products are original equipment parts. Prices subject to change without notice.



# Replaces R&R Products Greens Max

## 4022 Parts

*Traction Unit  
Differential*



Item No	R&R Part No.	OEM Part No.	Description	Qty Req	Price Each	Order Quantity
1	R202947		Gear - Pinion	2	11.75	
2	R241836		Gear - Differential	2	69.65	
3	R3004484		Pulley - 56 Tooth	1	212.75	
4	R302-5	R173-0, R21-6010, R255825, R302-37, R302-47, R302-57, R302-58, R302-6, R31-0300, R32-9660, R471214, R471223, R471226, R60-0800, R62-3880, R92-4181, RJD7797, RJD7842, RJD7844, RM0004, RZS48114-04	Fitting - Grease	1	0.30	
5	R308028		Pin - Hardened Traction Shaft	1	11.20	
6	R308030		Thrust Washer - 3/8 x 1	2	2.75	
7	R319085		Pin - Gear	2	2.35	
8	R3296-15	367029, R1503473, R32118-5, R32127-23, R32127-47, R367029, R445748, RG-371, RN101345	Locknut - 3/4-16 Nylon Jam	1	2.30	
9	R3296-49	R2810096	Locknut - 1 in 14	1	3.10	

All original equipment manufacturers names and part numbers are used for identification purposes only, and we are in no way implying that our products are original equipment parts. Prices subject to change without notice.



# Replaces R&R Products Greens Max

## 4022 Parts

*Traction Unit  
Differential*



Item No	R&R Part No.	OEM Part No.	Description	Qty Req	Price Each	Order Quantity
10	R361451		Flat Washer 1 x 1-1/2 Hardened Thrust	2	3.65	
11	R366693		Bearing - Differential	2	24.15	
12	R366695		Locking Collar	2	17.90	
13	R366695-1		Screw - Soc HD 1/4-28 x 5/8	2	0.79	
14	R366696		Spacer - Differential	1	45.25	
15	R366697		Spacer - Bronze Thrust	2	3.85	
16	R366698		Bushing - Drum	2	13.45	
17	R366699		Bushing - Differential	2	18.80	
18	R366700		Seal - Grease	2	15.05	
19	R366701		Seal - Grease	2	10.95	
20	R366702		Seal - Oil	1	8.75	
21	R415563		Set Screw - 7/16-20 x 3/8	2	2.30	
22	R434004	434004, R434003	Screw - Soc HD 5/16-18 x 1	3	1.95	
23	R434024	434024, R3274-12	Bolt - Soc HD Cap 5/16-18 x 3/4	2	1.35	
24	R446136	446136, R446134	Washer - Lock 5/16 Zinc	5	0.15	
25	R458127		Snap Ring	2	7.65	
26	R463007		Key	2	0.67	
27	R463017	R2119-561, R31-4400, R3257-5	Key - Woodruff	1	0.65	
28	R1000024		Smooth Roller - Fits 18 in	2	859.25	

All original equipment manufacturers names and part numbers are used for identification purposes only, and we are in no way implying that our products are original equipment parts. Prices subject to change without notice.



# Replaces R&R Products Greens Max

## 4022 Parts

*Traction Unit  
Differential*



Item No	R&R Part No.	OEM Part No.	Description	Qty Req	Price Each	Order Quantity
28	R132655		Smooth Roller - Fits 22 in	2	878.20	
30	R1000027		Dimpled Roller - Fits 26 in	2	895.25	
31	R395419		Roller Shaft - Fits 18 in	1	231.55	
31	R395367		Roller Shaft - Fits 22 in	1	222.50	
31	R395418		Roller Shaft - Fits 26 in	1	293.65	
34	R241835		Differential	1	239.75	
35	R220318		Bearing Housing - Differential	1	106.95	
36	R220319		Bearing Housing - Differential	1	83.55	
37	R164057		Seal Cover	1	48.35	
38	R443106	3218-2, 443106, R01-188-0518, R09003, R22-12-AJD, R32111-4, R3217-4, R3217-6, R513295, R513412, R915112P, R915978, R915979	Nut - 5/16-18 Y/Zinc Plated	4	0.20	

All original equipment manufacturers names and part numbers are used for identification purposes only, and we are in no way implying that our products are original equipment parts. Prices subject to change without notice.