

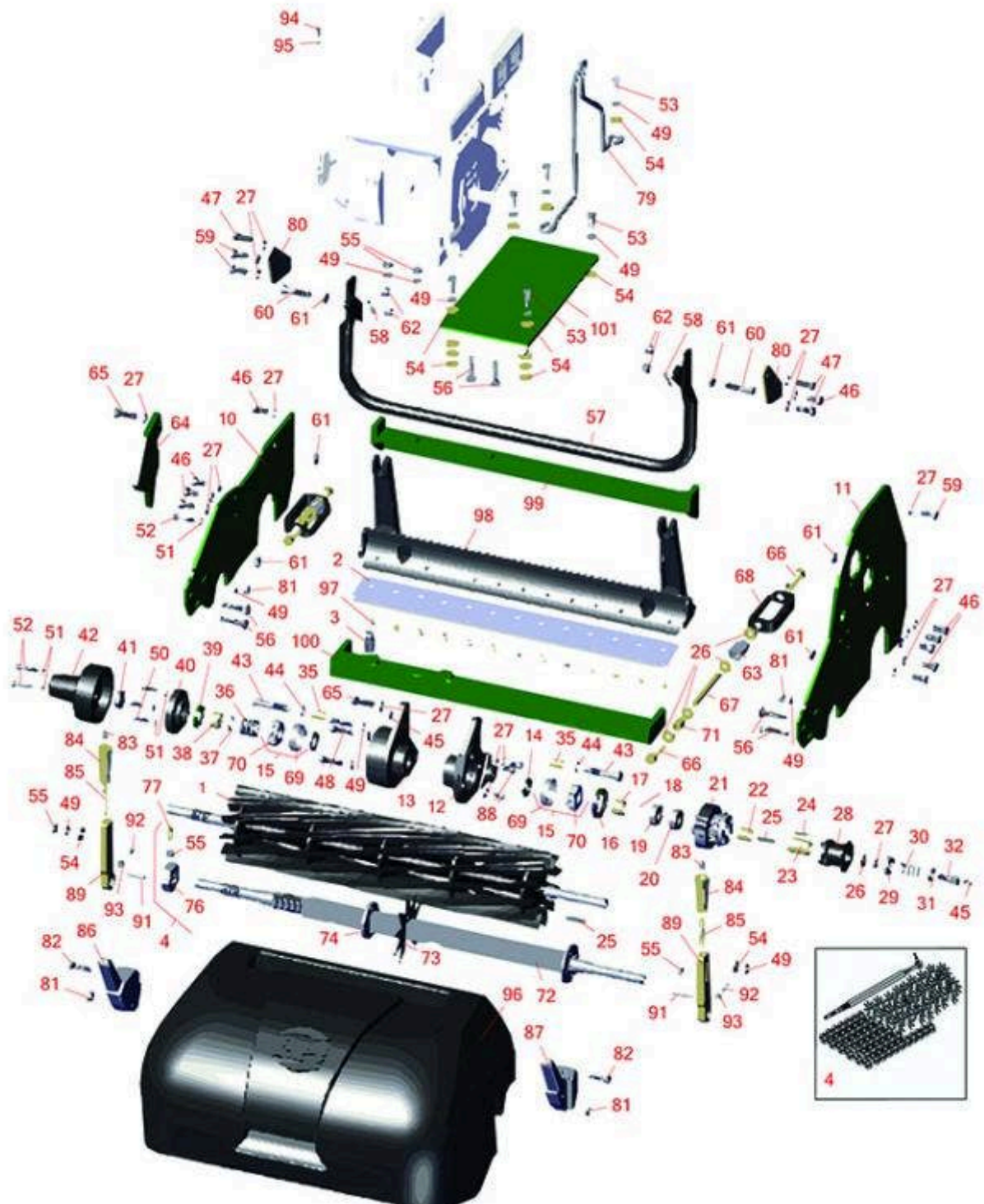


Replaces R&R Products Greens Max

4022 Parts

Cutting Unit

Reel & Bedknife



All original equipment manufacturers names and part numbers are used for identification purposes only, and we are in no way implying that our products are original equipment parts. Prices subject to change without notice.



Replaces R&R Products Greens Max

4022 Parts

Cutting Unit
Reel & Bedknife



| Item No | R&R Part No. | OEM Part No. | Description | Qty Req | Price Each | Order Quantity |
|---------|--------------|--------------|-------------|---------|------------|----------------|
|---------|--------------|--------------|-------------|---------|------------|----------------|

R&R Reels to fit 4018, Lifetime Guaranteed

| | | | | | | |
|---|----------------|--|-----------------|---|---------------|--|
| 1 | R101510 | | Reel - 14 Blade | 1 | 454.15 | |
|---|----------------|--|-----------------|---|---------------|--|

Detail Description: R&R Reel blades are manufactured from high carbon-boron alloy steel and then hardened to RC46-49 to match the temper of our bedknives and original equipment bedknives. All R&R Reels are cylindrically ground on bearing surfaces and then relief ground. Reels are then precision computer balanced for extended bearing and reel life. R&R Products Reels are guaranteed against defects in material and workmanship for the life of the reel under normal use.:

| | | | | | | |
|---|-----------------|--|-----------------|---|---------------|--|
| 1 | R5000095 | | Reel - 11 Blade | 1 | 291.95 | |
|---|-----------------|--|-----------------|---|---------------|--|

Detail Description: R&R Reel blades are manufactured from high carbon-boron alloy steel and then hardened to RC46-49 to match the temper of our bedknives and original equipment bedknives. All R&R Reels are cylindrically ground on bearing surfaces and then relief ground. Reels are then precision computer balanced for extended bearing and reel life. R&R Products Reels are guaranteed against defects in material and workmanship for the life of the reel under normal use.:

R&R Reels to fit 4022, Lifetime Guaranteed

| | | | | | | |
|---|----------------|--|-----------------|---|---------------|--|
| 1 | R101515 | | Reel - 14 Blade | 1 | 456.15 | |
|---|----------------|--|-----------------|---|---------------|--|

Detail Description: R&R Reel blades are manufactured from high carbon-boron alloy steel and then hardened to RC46-49 to match the temper of our bedknives and original equipment bedknives. All R&R Reels are cylindrically ground on bearing surfaces and then relief ground. Reels are then precision computer balanced for extended bearing and reel life. R&R Products Reels are guaranteed against defects in material and workmanship for the life of the reel under normal use.:

| | | | | | | |
|---|-----------------|-----------------------|-----------------|---|---------------|--|
| 1 | R5000148 | R50000148, R503616 | Reel - 11 Blade | 1 | 294.10 | |
|---|-----------------|-----------------------|-----------------|---|---------------|--|

Detail Description: R&R Reel blades are manufactured from high carbon-boron alloy steel and then hardened to RC46-49 to match the temper of our bedknives and original equipment bedknives. All R&R Reels are cylindrically ground on bearing surfaces and then relief ground. Reels are then precision computer balanced for extended bearing and reel life. R&R Products Reels are guaranteed against defects in material and workmanship for the life of the reel under normal use.:

R&R Reels to fit 4026, Lifetime Guaranteed

| | | | | | | |
|---|-----------------|--|-----------------|---|---------------|--|
| 1 | R5000416 | | Reel - 11 Blade | 1 | 364.45 | |
|---|-----------------|--|-----------------|---|---------------|--|

All original equipment manufacturers names and part numbers are used for identification purposes only, and we are in no way implying that our products are original equipment parts. Prices subject to change without notice.



Replaces R&R Products Greens Max

4022 Parts

Cutting Unit
Reel & Bedknife



| Item No | R&R Part No. | OEM Part No. | Description | Qty Req | Price Each | Order Quantity |
|---------|--------------|--------------|-------------|---------|------------|----------------|
|---------|--------------|--------------|-------------|---------|------------|----------------|

Detail Description: R&R Reel blades are manufactured from high carbon-boron alloy steel and then hardened to RC46-49 to match the temper of our bedknives and original equipment bedknives. All R&R Reels are cylindrically ground on bearing surfaces and then relief ground. Reels are then precision computer balanced for extended bearing and reel life. R&R Products Reels are guaranteed against defects in material and workmanship for the life of the reel under normal use.:

| | | | | | | |
|---|----------------|--|----------------|---|---------------|--|
| 1 | R101500 | | Reel - 9 Blade | 1 | 346.95 | |
|---|----------------|--|----------------|---|---------------|--|

Detail Description: R&R Reel blades are manufactured from high carbon-boron alloy steel and then hardened to RC46-49 to match the temper of our bedknives and original equipment bedknives. All R&R Reels are cylindrically ground on bearing surfaces and then relief ground. Reels are then precision computer balanced for extended bearing and reel life. R&R Products Reels are guaranteed against defects in material and workmanship for the life of the reel under normal use.:

| | | | | | | |
|---|-----------------|----------|----------------|---|---------------|--|
| 1 | R5000417 | R5003652 | Reel - 7 Blade | 1 | 348.35 | |
|---|-----------------|----------|----------------|---|---------------|--|

Detail Description: R&R Reel blades are manufactured from high carbon-boron alloy steel and then hardened to RC46-49 to match the temper of our bedknives and original equipment bedknives. All R&R Reels are cylindrically ground on bearing surfaces and then relief ground. Reels are then precision computer balanced for extended bearing and reel life. R&R Products Reels are guaranteed against defects in material and workmanship for the life of the reel under normal use.:

R&R Bedknives to fit 4018, Lifetime Guaranteed

| | | | | | | |
|---|-----------------|--|--------------------------|---|--------------|--|
| 2 | R5000098 | | Bedknife - Low Cut 18 in | 1 | 46.75 | |
|---|-----------------|--|--------------------------|---|--------------|--|

Detail Description: R&R Bedknives are manufactured from high carbon-boron alloy steel and then hardened to RC46-49 to match the temper of our reel blades and original equipment reels. Bedknives are surface ground on the top and front edge and straightened three times before being packaged with oil for rust prevention. All R&R Bedknives now have an increased front edge grind for added life. All R&R Bedknives are guaranteed against defects in material and workmanship under normal use for the life of the part.:

| | | | | | | |
|---|-----------------|----------|--|---|--------------|--|
| 2 | R5002888 | R5001056 | Bedknife - Tournament 18" - .082-.109 | 1 | 49.95 | |
|---|-----------------|----------|--|---|--------------|--|

Detail Description: R&R Bedknives are manufactured from high carbon-boron alloy steel and then hardened to RC46-49 to match the temper of our reel blades and original equipment reels. Bedknives are surface ground on the top and front edge and straightened three times before being packaged with oil for rust prevention. All R&R Bedknives now have an increased front edge grind for added life. All R&R Bedknives are guaranteed against defects in material and workmanship under normal use for the life of the part.:

All original equipment manufacturers names and part numbers are used for identification purposes only, and we are in no way implying that our products are original equipment parts. Prices subject to change without notice.



Replaces R&R Products Greens Max

4022 Parts

Cutting Unit

Reel & Bedknife



| Item No | R&R Part No. | OEM Part No. | Description | Qty Req | Price Each | Order Quantity |
|---------|--------------|--------------|-------------|---------|------------|----------------|
|---------|--------------|--------------|-------------|---------|------------|----------------|

| | | | | | | |
|---|----------------|--|----------------------|---|--------------|--|
| 2 | R101430 | | Bedknife - Micro Cut | 1 | 47.55 | |
|---|----------------|--|----------------------|---|--------------|--|

Detail Description: R&R Bedknives are manufactured from high carbon-boron alloy steel and then hardened to RC46-49 to match the temper of our reel blades and original equipment reels. Bedknives are surface ground on the top and front edge and straightened three times before being packaged with oil for rust prevention. All R&R Bedknives now have an increased front edge grind for added life. All R&R Bedknives are guaranteed against defects in material and workmanship under normal use for the life of the part.:

R&R Bedknives to fit 4022, Lifetime Guaranteed

| | | | | | | |
|---|-----------------|----------------------|------------------------------------|---|--------------|--|
| 2 | R4234900 | R101258, R5000927 | Bedknife - Tournament .063-.110 | 1 | 43.65 | |
|---|-----------------|----------------------|------------------------------------|---|--------------|--|

Detail Description: R&R Bedknives are manufactured from high carbon-boron alloy steel and then hardened to RC46-49 to match the temper of our reel blades and original equipment reels. Bedknives are surface ground on the top and front edge and straightened three times before being packaged with oil for rust prevention. All R&R Bedknives now have an increased front edge grind for added life. All R&R Bedknives are guaranteed against defects in material and workmanship under normal use for the life of the part.:

| | | | | | | |
|---|----------------|---------------------|--|---|--------------|--|
| 2 | R503479 | R101259, R503029 | Bedknife - Tournament .094-.156 HOC | 1 | 41.75 | |
|---|----------------|---------------------|--|---|--------------|--|

Detail Description: R&R Bedknives are manufactured from high carbon-boron alloy steel and then hardened to RC46-49 to match the temper of our reel blades and original equipment reels. Bedknives are surface ground on the top and front edge and straightened three times before being packaged with oil for rust prevention. All R&R Bedknives now have an increased front edge grind for added life. All R&R Bedknives are guaranteed against defects in material and workmanship under normal use for the life of the part.:

| | | | | | | |
|---|----------------|---|----------------------------------|---|--------------|--|
| 2 | R503478 | R101260, R503028, R549504, R549749 | Bedknife - Thin .125-.219 HOC | 1 | 41.75 | |
|---|----------------|---|----------------------------------|---|--------------|--|

Detail Description: R&R Bedknives are manufactured from high carbon-boron alloy steel and then hardened to RC46-49 to match the temper of our reel blades and original equipment reels. Bedknives are surface ground on the top and front edge and straightened three times before being packaged with oil for rust prevention. All R&R Bedknives now have an increased front edge grind for added life. All R&R Bedknives are guaranteed against defects in material and workmanship under normal use for the life of the part.:

| | | | | | | |
|---|----------------|---------------------------------|-----------------------------------|---|--------------|--|
| 2 | R503477 | R101261, R503027, R549397 | Bedknife - Thick .156-.438 HOC | 1 | 40.05 | |
|---|----------------|---------------------------------|-----------------------------------|---|--------------|--|

All original equipment manufacturers names and part numbers are used for identification purposes only, and we are in no way implying that our products are original equipment parts. Prices subject to change without notice.



Replaces R&R Products Greens Max

4022 Parts

Cutting Unit

Reel & Bedknife



| Item No | R&R Part No. | OEM Part No. | Description | Qty Req | Price Each | Order Quantity |
|---------|--------------|--------------|-------------|---------|------------|----------------|
|---------|--------------|--------------|-------------|---------|------------|----------------|

Detail Description: R&R Bedknives are manufactured from high carbon-boron alloy steel and then hardened to RC46-49 to match the temper of our reel blades and original equipment reels. Bedknives are surface ground on the top and front edge and straightened three times before being packaged with oil for rust prevention. All R&R Bedknives now have an increased front edge grind for added life. All R&R Bedknives are guaranteed against defects in material and workmanship under normal use for the life of the part.:

| | | | | | | |
|---|-----------------|--|----------------------------------|---|--------------|--|
| 2 | R5002887 | | Bedknife - Micro Cut - .082-.109 | 1 | 45.35 | |
|---|-----------------|--|----------------------------------|---|--------------|--|

Detail Description: R&R Bedknives are manufactured from high carbon-boron alloy steel and then hardened to RC46-49 to match the temper of our reel blades and original equipment reels. Bedknives are surface ground on the top and front edge and straightened three times before being packaged with oil for rust prevention. All R&R Bedknives now have an increased front edge grind for added life. All R&R Bedknives are guaranteed against defects in material and workmanship under normal use for the life of the part.:

| | | | | | | |
|---|-----------------|--|------------------------|---|--------------|--|
| 2 | R5000413 | | Bedknife - 26 Thin 1/8 | 1 | 51.75 | |
|---|-----------------|--|------------------------|---|--------------|--|

Detail Description: R&R Bedknives are manufactured from high carbon-boron alloy steel and then hardened to RC46-49 to match the temper of our reel blades and original equipment reels. Bedknives are surface ground on the top and front edge and straightened three times before being packaged with oil for rust prevention. All R&R Bedknives now have an increased front edge grind for added life. All R&R Bedknives are guaranteed against defects in material and workmanship under normal use for the life of the part.:

| | | | | | | |
|---|-----------------|--|--------------------------|---|--------------|--|
| 2 | R5000414 | | Bedknife - 26 Thick 3/16 | 1 | 49.95 | |
|---|-----------------|--|--------------------------|---|--------------|--|

Detail Description: R&R Bedknives are manufactured from high carbon-boron alloy steel and then hardened to RC46-49 to match the temper of our reel blades and original equipment reels. Bedknives are surface ground on the top and front edge and straightened three times before being packaged with oil for rust prevention. All R&R Bedknives now have an increased front edge grind for added life. All R&R Bedknives are guaranteed against defects in material and workmanship under normal use for the life of the part.:

| | | | | | | |
|---|-----------------|--|------------------------|---|--------------|--|
| 2 | R5000141 | | Bedknife - Heavy 26 in | 1 | 58.25 | |
|---|-----------------|--|------------------------|---|--------------|--|

Detail Description: R&R Bedknives are manufactured from high carbon-boron alloy steel and then hardened to RC46-49 to match the temper of our reel blades and original equipment reels. Bedknives are surface ground on the top and front edge and straightened three times before being packaged with oil for rust prevention. All R&R Bedknives now have an increased front edge grind for added life. All R&R Bedknives are guaranteed against defects in material and workmanship under normal use for the life of the part.:

R&R Razor Tool Steel Bedknives to fit 4022, Lifetime Guaranteed

All original equipment manufacturers names and part numbers are used for identification purposes only, and we are in no way implying that our products are original equipment parts. Prices subject to change without notice.



Replaces R&R Products Greens Max

4022 Parts

Cutting Unit
Reel & Bedknife



| Item No | R&R Part No. | OEM Part No. | Description | Qty Req | Price Each | Order Quantity |
|---------|--------------|--------------|-------------|---------|------------|----------------|
|---------|--------------|--------------|-------------|---------|------------|----------------|

| | | | | | | |
|---|---------|--|---|---|-------|--|
| 2 | R101520 | | Bedknife - Razor Tool Steel - 22 Micro Cut | 1 | 99.65 | |
|---|---------|--|---|---|-------|--|

Detail Description: R&R Razor bedknives are manufactured from premium alloy tool steel steel and then hardened to RC48-51 to match the temper of our Razor reel blades and original equipment premium series reels. Bedknives are surface ground on the top and front edge and specially packaged for rust prevention. All R&R Bedknives now have an increased front edge grind for added life. All R&R Bedknives are guaranteed against defects in material and workmanship under normal use for the life of the part. You can expect up to double the life over standard bedknives.:

| | | | | | | |
|---|---------|--|--|---|-------|--|
| 2 | R101521 | | Bedknife - Razor Tool Steel - 22 Tournament Cut | 1 | 99.65 | |
|---|---------|--|--|---|-------|--|

Detail Description: R&R Razor bedknives are manufactured from premium alloy tool steel steel and then hardened to RC48-51 to match the temper of our Razor reel blades and original equipment premium series reels. Bedknives are surface ground on the top and front edge and specially packaged for rust prevention. All R&R Bedknives now have an increased front edge grind for added life. All R&R Bedknives are guaranteed against defects in material and workmanship under normal use for the life of the part. You can expect up to double the life over standard bedknives.:

Service Tools

| | | | | | | |
|---|----------|--|-------------------------------|---|-------|--|
| 3 | R101272T | | Bedknife Screw Driver Tool | 0 | 37.45 | |
|---|----------|--|-------------------------------|---|-------|--|

Tech Note: Easily install and remove bed knife screws with the help of a ratchet. Tool manufactured with hardened alloy steel.:

Detail Description: Easily install and remove bed knife screws with the help of a ratchet. Tool manufactured with hardened alloy steel.:

Verticut Conversion Kits to fit 4022

| | | | | | | |
|---|---------|--|---|---|--------|--|
| 4 | R101164 | | Vertical Mower Conversion Kit - Fits 22 Only | 1 | 499.75 | |
|---|---------|--|---|---|--------|--|

Detail Description: Includes:1 ea. R101163 Shaft, R352437 Nut, 26 ea. R101160 Vertical Mower Blades & 76 R35221 Nylon Spacers:

Other Parts Available

| | | | | | | |
|----|-----------|--|--------------------|---|--------|--|
| 10 | R2811122G | | Frame - RH - Green | 1 | 178.70 | |
|----|-----------|--|--------------------|---|--------|--|

All original equipment manufacturers names and part numbers are used for identification purposes only, and we are in no way implying that our products are original equipment parts. Prices subject to change without notice.



Replaces R&R Products Greens Max

4022 Parts

Cutting Unit
Reel & Bedknife



| Item No | R&R Part No. | OEM Part No. | Description | Qty Req | Price Each | Order Quantity |
|---|--------------|--------------------------------------|-----------------------|---------|------------|----------------|
| 11 | R2811121G | | Frame - LH - Green | 1 | 218.10 | |
| 12 | R1000446 | | Bearing Housing - LH | 1 | 143.80 | |
| 13 | R1000447 | | Bearing Housing - RH | 1 | 136.95 | |
| <i>Detail Description: Includes R545940, R366650, R254-79 & R302-5:</i> | | | | | | |
| 14 | R366650 | | Seal | 2 | 8.05 | |
| 15 | R500534 | R2208006, RPT230030, RZS482621 | Bearing - with Cup | 2 | 12.40 | |
| <i>Detail Description: Kit includes: 1 ea R254-78- Bearing Cone & R254-79 Bearing Cone:</i> | | | | | | |
| 16 | R366649 | RZS481024 | Seal | 1 | 3.45 | |
| 17 | R366645 | | Spacer - Reel | 1 | 9.55 | |
| 18 | R458461 | 458461, R32151-34, R453461 | Snap Ring | 1 | 1.20 | |
| 19 | R366652 | | Bearing | 1 | 12.50 | |
| 20 | R365229 | 365229, R325229 | Bearing | 1 | 17.45 | |
| 21 | R2811185 | | Pulley | 1 | 418.85 | |
| 22 | R366646 | | Spacer | 1 | 8.95 | |
| 23 | R340462 | | Drive Coupling | 1 | 44.65 | |
| 24 | R345556 | 345556 | Key - Sq 1/8 x 1 | 1 | 1.75 | |
| 25 | R320774 | | Key - Sq 3/16 x 1-1/4 | 2 | 1.60 | |
| 26 | R366653 | R71-9310 | Spacer | 1 | 4.05 | |

All original equipment manufacturers names and part numbers are used for identification purposes only, and we are in no way implying that our products are original equipment parts. Prices subject to change without notice.



Replaces R&R Products Greens Max

4022 Parts

Cutting Unit
Reel & Bedknife



| Item No | R&R Part No. | OEM Part No. | Description | Qty Req | Price Each | Order Quantity |
|---------|--------------|---|---------------------------------|---------|------------|----------------|
| 27 | R3254-6 | 446142, R01-166-0010, R01-166-0280, R01-166-0610, R12H304, R3253-5, R3254-18, R3290-223, R446140, R446142, R48-9370 | Washer - Lock 3/8 | 17 | 0.08 | |
| 28 | R5002727 | | Clutch - Reel | 1 | 160.30 | |
| 29 | R3004368 | | Retainer - Spring | 1 | 12.45 | |
| 30 | R3006061 | | Spring | 1 | 6.90 | |
| 31 | R3004369 | | Retainer - Spring | 1 | 12.95 | |
| 32 | R366651 | | Bolt - Special | 1 | 23.60 | |
| 35 | R545940 | R2500759 | Bushing | 2 | 8.50 | |
| 36 | R363047 | R348846 | Spring - Reel | 1 | 5.20 | |
| 37 | R304745 | | Washer - Reel | 1 | 0.74 | |
| 38 | R364900 | | Nut - Reel Tension | 1 | 10.30 | |
| 39 | R364170 | R253-118, R366648, R62-3400 | Seal | 1 | 5.75 | |
| 40 | R164041 | | Seal Carrier - Reel - Incl Seal | 1 | 46.85 | |

All original equipment manufacturers names and part numbers are used for identification purposes only, and we are in no way implying that our products are original equipment parts. Prices subject to change without notice.



Replaces R&R Products Greens Max

4022 Parts

Cutting Unit
Reel & Bedknife



| Item No | R&R Part No. | OEM Part No. | Description | Qty Req | Price Each | Order Quantity |
|---------|--------------|--|----------------------------|---------|------------|----------------|
| 41 | R3296-15 | 367029, R1503473, R32118-5, R32127-23, R32127-47, R367029, R445748, RG-371, RN101345 | Locknut - 3/4-16 Nylon Jam | 1 | 2.30 | |
| 42 | R2000064 | | Cover - Reel | 1 | 74.05 | |
| 43 | R347169 | R365501 | Stud - Backing RH 2-5/16 | 2 | 32.50 | |
| 44 | R454017 | | Shim - Bed Bar Bolt | 2 | 3.05 | |
| 45 | R302-5 | R173-0, R21-6010, R255825, R302-37, R302-47, R302-57, R302-58, R302-6, R31-0300, R32-9660, R471214, R471223, R471226, R60-0800, R62-3880, R92-4181, RJD7797, RJD7842, RJD7844, RM0004, RZS48114-04 | Fitting - Grease | 1 | 0.30 | |
| 46 | R400258 | R01-150-0800, R01-178-0600, R01-178-0606, R20-45-AD, R31-0200, R31-9910, R3224-1, R323-4 | Bolt - Hex HD 3/8-16 x 3/4 | 9 | 0.54 | |

All original equipment manufacturers names and part numbers are used for identification purposes only, and we are in no way implying that our products are original equipment parts. Prices subject to change without notice.



Replaces R&R Products Greens Max

4022 Parts

Cutting Unit
Reel & Bedknife



| Item No | R&R Part No. | OEM Part No. | Description | Qty Req | Price Each | Order Quantity |
|---------|----------------|--|---------------------------------|---------|-------------|----------------|
| 47 | RF3205 | R400262 | Bolt - Hex HD 3/8-16 x 1 | 2 | 0.82 | |
| 48 | R434036 | R3274-18 | Screw - Soc HD 5/16-18 x 1-1/4 | 3 | 2.50 | |
| 49 | R446136 | 446136, R446134 | Washer - Lock 5/16 Zinc | 6 | 0.15 | |
| 50 | R434028 | | Bolt - Soc HD Cap 1/4-20 x 3/4 | 3 | 1.30 | |
| 51 | R3253-3 | 446130, R01-166-0070, R01-166-0410, R23-9-GD, R24-7150, R352-167, R446128, R446130 | Washer - Lock 1/4 | 5 | 0.12 | |
| 52 | R400112 | R400114 | Bolt - Hex HD 1/4-20 x 1-1/4 | 4 | 0.40 | |
| 53 | R322-5 | 322-5, R01-178-0508, R19H1905, R20-26-AD, R20-26-AGD, R30-9000, R400188, R513341, R519755, R908019P | Bolt - Hex HD 5/16-18 x 1 | 6 | 0.42 | |
| 54 | R348849 | | Shim Washer - 5/16 x 7/8 x .010 | 0 | 1.25 | |
| 54 | R364263 | | Shim Washer - 5/16 x 7/8 x 1/16 | 0 | 1.65 | |
| 54 | R364441 | 364441, R303873, R366641 | Washer - Flat 5/16x7/8 | 0 | 2.30 | |

All original equipment manufacturers names and part numbers are used for identification purposes only, and we are in no way implying that our products are original equipment parts. Prices subject to change without notice.



Replaces R&R Products Greens Max

4022 Parts

Cutting Unit
Reel & Bedknife



| Item No | R&R Part No. | OEM Part No. | Description | Qty Req | Price Each | Order Quantity |
|---------|--------------|--|---------------------------------|---------|------------|----------------|
| 55 | R443106 | 3218-2, 443106, R01-188-0518, R09003, R22-12-AJD, R32111-4, R3217-4, R3217-6, R513295, R513412, R915112P, R915978, R915979 | Nut - 5/16-18 Y/Zinc Plated | 4 | 0.20 | |
| 56 | R441677 | | Bolt - Carriage 5/16-18 x 1-1/2 | 4 | 0.69 | |
| 57 | R1000018 | | Kickstand - 18 in | 1 | 159.65 | |
| 57 | R132674 | | Kickstand - 22 in | 1 | 161.25 | |
| 57 | R1000019 | | Kickstand - 26 in | 1 | 164.80 | |
| 58 | R364164 | | Spring | 2 | 8.65 | |
| 59 | R400260 | R01-178-0605, R18-4100, R19-8270, R323-3, R323-33, R323-34, R323-5 | Bolt - Hex HD 3/8-16 x 7/8 | 4 | 0.79 | |
| 60 | R400268 | | Bolt - Hex HD 3/8-16 x 1-3/4 | 2 | 0.78 | |
| 61 | R3218-3 | 3218-3, R01-191-0616, R22-13-AJKD, R443810, R915236P | Nut - 3/8-16 Jam | 4 | 0.41 | |
| 62 | R444850 | | Nut - 3/8-16 Jam Center Lock | 4 | 0.99 | |

All original equipment manufacturers names and part numbers are used for identification purposes only, and we are in no way implying that our products are original equipment parts. Prices subject to change without notice.



Replaces R&R Products Greens Max

4022 Parts

Cutting Unit
Reel & Bedknife



| Item No | R&R Part No. | OEM Part No. | Description | Qty Req | Price Each | Order Quantity |
|---------|--------------|--|---------------------------------|---------|------------|----------------|
| 63 | R366709 | | Spring | 2 | 6.25 | |
| 64 | R3001644G | | Weight - Green | 1 | 45.75 | |
| 65 | R400264 | 323-7, R01-150-0180, R01-178-0610, R19H1732, R20-48-AD, R20-48-AGD, R32-9160, R3224-3, R323-29, R323-7, R400264, R908035P | Bolt - Hex HD 3/8-16 x 1-1/4 | 1 | 0.42 | |
| 66 | R366726 | | Bolt - Special - Bed Knife Adj. | 4 | 16.15 | |
| 67 | R366727 | | Rod - Bedknife Block | 2 | 6.05 | |
| 68 | R3001600 | | Block - Bedknife Adjusting | 2 | 25.15 | |
| 69 | R254-79 | R01-103-0060, R01-103-0130, R1-633584, R252-106, R255820, R32-7800, R32-9590, R4121175, R70030-50301, R808088, RB4015, RG-372, RJD8226 | Cup - Bearing | 2 | 3.40 | |

Detail Description: Use R254-79M installation mandrel to properly install race.:

All original equipment manufacturers names and part numbers are used for identification purposes only, and we are in no way implying that our products are original equipment parts. Prices subject to change without notice.



Replaces R&R Products Greens Max

4022 Parts

Cutting Unit
Reel & Bedknife



| Item No | R&R Part No. | OEM Part No. | Description | Qty Req | Price Each | Order Quantity |
|---------|--------------|---|--|---------|------------|----------------|
| 70 | R254-78 | R01-102-0060, R01-102-0130, R1-633585, R255815, R32-7790, R32-9580, R385174, R4121174, R4135152, R70030-50302, R93-4813, RB4512, RG-373, RJD8188 | Tapered Bearing Cone | 2 | 6.40 | |
| 71 | R367512 | | Spacer - Bedknife Adj | 2 | 4.15 | |
| 72 | R101163 | | Shaft - V-Cut Fits Jac 422/522 | 1 | 234.95 | |
| 73 | R101160 | | Verti-Cut Blade - Fits 22 Gm | 26 | 7.65 | |
| 73 | R101160C | | Verti-Cut Blade - Fits 22 Gm Carbide Tipped | 26 | 17.95 | |
| 74 | R352221 | R841360 | Spacer - Nylon V-Cut Shaft | 76 | 1.60 | |
| 76 | R352437 | | Nut - V-Cut Shaft | 1 | 11.95 | |
| 77 | R412017 | | Screw - Sq. HD Set | 1 | 1.35 | |
| 79 | R3006118 | | Lift Hook | 1 | 42.70 | |
| 80 | R366796 | | Bracket - Kickstand | 2 | 33.15 | |
| 81 | R444718 | 444718 | Nut - 5/16-18 Center Lock YZ | 4 | 0.48 | |
| 82 | R400190 | R01-150-0720, R01-178-0510, R30-8680, R322-6, R513343 | Bolt - Hex HD 5/16-18 x 1-1/4 GR5 | 2 | 0.42 | |

All original equipment manufacturers names and part numbers are used for identification purposes only, and we are in no way implying that our products are original equipment parts. Prices subject to change without notice.



Replaces R&R Products Greens Max

4022 Parts

Cutting Unit
Reel & Bedknife



| Item No | R&R Part No. | OEM Part No. | Description | Qty Req | Price Each | Order Quantity |
|---------|--------------|--|--------------------------------------|---------|------------|----------------|
| 83 | R471219 | 471219, R30-8360, R302-2, R302-24, R302-31, R471231, RJD7759, RJD7798 | Zerk - Grease | 2 | 0.45 | |
| 84 | R365009 | R3005692, R365170 | Knob - Adjusting Roller | 2 | 20.40 | |
| 85 | R343616 | 343616 | Stud | 2 | 7.90 | |
| 86 | R241827 | | Bracket - LH Grass Catcher | 1 | 76.20 | |
| 87 | R241828 | | Bracket - RH Grass Catcher | 1 | 76.20 | |
| 88 | R434051 | | Bolt - Soc HD Cap 5/16-18 x 1/2 | 3 | 1.40 | |
| 89 | R2000072 | | Bracket - Roller | 2 | 21.55 | |
| 91 | R461339 | | Pin - Grooved Roller Bkt | 2 | 0.91 | |
| 92 | R352737 | | Screw - Set 1/4 x 7/8 Sq Head | 2 | 0.72 | |
| 93 | R443102 | R01-188-0420, R22-11-AJD, R3217-5 | Nut - 1/4-20 Yellow Zinc | 7 | 0.23 | |
| 94 | R300104 | | Screw - Button HD Cap 10-32 x 5/8 | 1 | 0.34 | |
| 95 | R444312 | R22-9-BJD, R26-2360, R26-4370, R3219-12, R3219-14, R48-9280, R513287, R915561 | Nut - 10-32 | 1 | 0.08 | |

All original equipment manufacturers names and part numbers are used for identification purposes only, and we are in no way implying that our products are original equipment parts. Prices subject to change without notice.



Replaces R&R Products Greens Max

4022 Parts

Cutting Unit
Reel & Bedknife



| Item No | R&R Part No. | OEM Part No. | Description | Qty Req | Price Each | Order Quantity |
|---------|--------------|----------------------------------|--------------------------------|---------|------------|----------------|
| 96 | R101545 | | Grass Catcher - RR Fits 18 in | 1 | 302.35 | |
| 96 | R101546 | | Grass Catcher - Fits 22 in | 1 | 312.35 | |
| 96 | R101547 | | Grass Catcher - Fits 26 in | 1 | 321.10 | |
| 97 | R101272 | R3009138, R402578, R800813 | Screw - Bedknife 1/4-20 x 1/2 | 13 | 0.35 | |
| 98 | R5000102 | | Bed Bar - 18 in | 1 | 317.15 | |
| 98 | R5000457 | R2000075 | Bed Bar - 22 in | 1 | 332.95 | |
| 98 | R5000412 | | Bed Bar - 26 in | 1 | 332.95 | |
| 99 | R1000020G | | Rear Crossbar - 18 in - Green | 1 | 224.75 | |
| 99 | R1000838G | | Rear Crossbar - 22 in - Green | 1 | 229.80 | |
| 99 | R1000021G | | Rear Crossbar - 26 in - Green | 1 | 287.80 | |
| 100 | R1000022G | | Front Crossbar - 18 in - Green | 1 | 125.30 | |
| 100 | R1000839G | | Front Crossbar - 22 in - Green | 1 | 126.90 | |
| 100 | R1000023G | | Front Crossbar - 26 in - Green | 1 | 133.85 | |
| 101 | R5002848G | | Engine Base - Green | 1 | 38.20 | |

All original equipment manufacturers names and part numbers are used for identification purposes only, and we are in no way implying that our products are original equipment parts. Prices subject to change without notice.