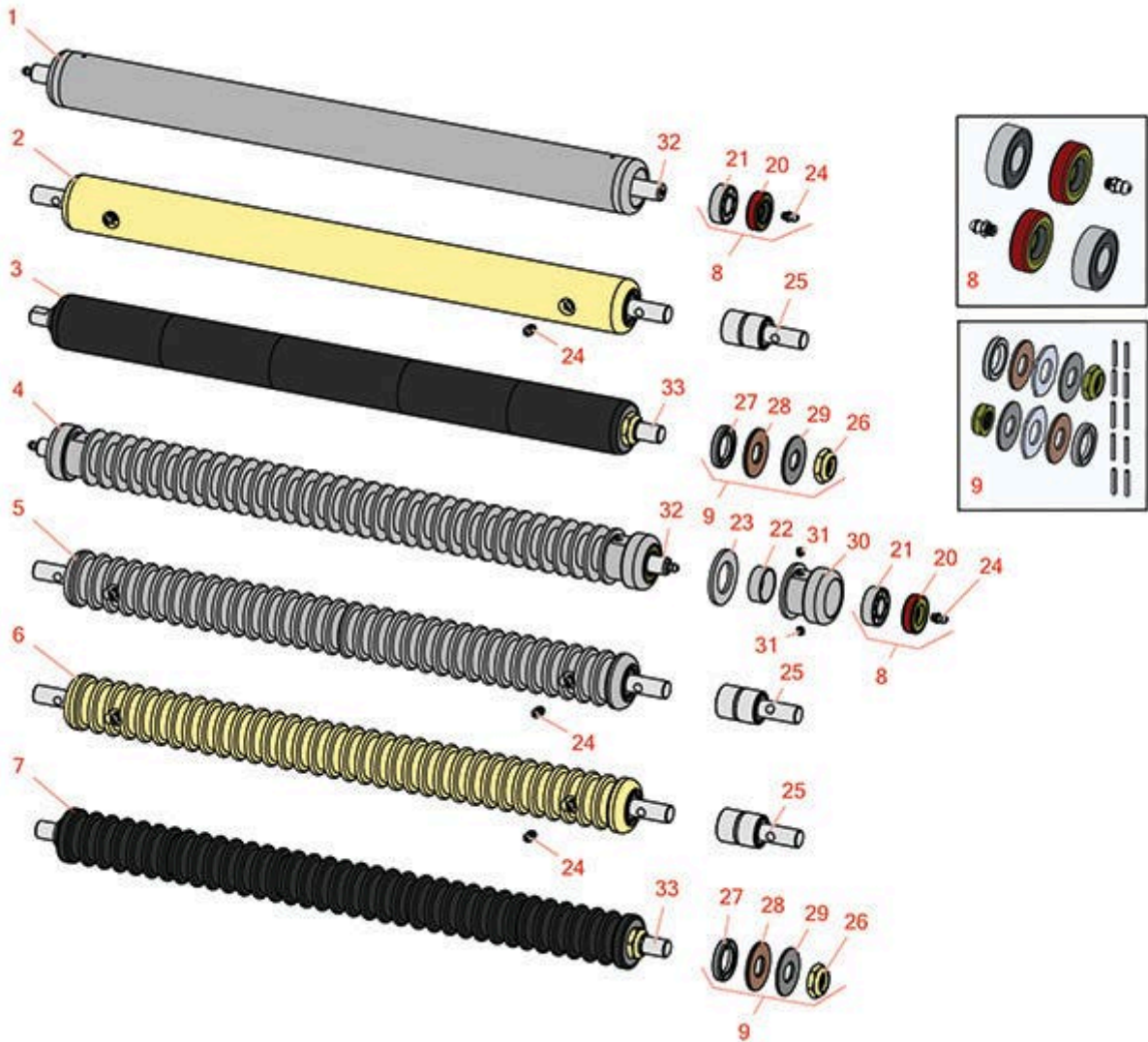




# Replaces R&R Products Greens Max

## 4018 Parts

Cutting Unit  
Rollers



All original equipment manufacturers names and part numbers are used for identification purposes only, and we are in no way implying that our products are original equipment parts. Prices subject to change without notice.



# Replaces R&R Products Greens Max

## 4018 Parts

Cutting Unit  
Rollers



Item No	R&R Part No.	OEM Part No.	Description	Qty Req	Price Each	Order Quantity
---------	--------------	--------------	-------------	---------	------------	----------------

### R&R Rollers to fit 4018

5	<b>R101129</b>	R68618	Roller - Grooved Machined Aluminum	0	<b>288.90</b>	
---	----------------	--------	------------------------------------	---	---------------	--

*Tech Note: Machined from solid aluminum, this roller uses greasable "water-pump" style bearings.:*

6	<b>R101130</b>	R68616	Roller - Grooved Solid Steel	0	<b>290.30</b>	
---	----------------	--------	------------------------------	---	---------------	--

*Tech Note: Machined from solid steel, this heavy weight roller uses greasable "water-pump" style bearings.:*

### R&R Rollers to fit 4022

1	<b>R158776</b>	R1004991, R162917	Roller - Smooth Tubular Steel	0	<b>139.60</b>	
---	----------------	----------------------	-------------------------------	---	---------------	--

*Tech Note: Constructed with a through shaft and greasable ball bearings.:*

2	<b>R101126</b>		Roller - Smooth Solid Steel	0	<b>201.15</b>	
---	----------------	--	-----------------------------	---	---------------	--

*Tech Note: Machined from solid steel, this heavy weight roller uses greasable "water-pump" style bearings.:*

3	<b>R101336</b>		Roller - Smooth UHMW Polyethylene	0	<b>186.65</b>	
---	----------------	--	-----------------------------------	---	---------------	--

*Tech Note: Machined from solid UHMW, this low maintenance roller uses a 1" solid stainless steel shaft and requires no grease. UHMW material prevents build-up of debris.:*

4	<b>R68527R</b>	R68527	Roller - Grooved Repairable Steel	0	<b>192.10</b>	
---	----------------	--------	-----------------------------------	---	---------------	--

*Tech Note: Constructed with a through shaft and greasable ball bearings, this roller can be repaired by unscrewing the ends and replacing the series of washers and spacers.:*

5	<b>R101123</b>		Roller - Grooved Machined Solid Aluminum	0	<b>195.65</b>	
---	----------------	--	--	---	---------------	--

*Tech Note: Machined from solid aluminum, this lightweight roller uses greasable "water-pump" style bearings.:*

All original equipment manufacturers names and part numbers are used for identification purposes only, and we are in no way implying that our products are original equipment parts. Prices subject to change without notice.



# Replaces R&R Products Greens Max

## 4018 Parts

Cutting Unit  
Rollers



Item No	R&R Part No.	OEM Part No.	Description	Qty Req	Price Each	Order Quantity
---------	--------------	--------------	-------------	---------	------------	----------------

6	<b>R68577</b>		Roller - Grooved Machined Solid Steel	0	<b>198.25</b>	
---	---------------	--	---------------------------------------	---	---------------	--

*Tech Note: Machined from solid steel, this heavyweight roller uses greasable "water-pump" style bearings.:*

7	<b>R101330</b>	R1013300	Roller - Grooved UHMW Polyethylene	0	<b>191.90</b>	
---	----------------	----------	------------------------------------	---	---------------	--

*Tech Note: Machined from solid UHMW, this low maintenance roller rotates around a 1" solid stainless steel shaft and requires no bearings or grease. Patented groove design and smooth UHMW material prevents build-up of debris.:*

### R&R Rollers to fit 4026

5	<b>R101127</b>	R67617	Roller - Grooved Machined Aluminum	0	<b>294.05</b>	
---	----------------	--------	------------------------------------	---	---------------	--

*Tech Note: Machined from solid aluminum, this roller uses greasable "water-pump" style bearings.:*

6	<b>R101128</b>	R68628	Roller - Grooved Machined Solid Steel	0	<b>352.25</b>	
---	----------------	--------	---------------------------------------	---	---------------	--

*Tech Note: Machined from solid steel, this heavy weight roller uses greasable "water-pump" style bearings.:*

### Overhaul Kits

8	<b>R100130</b>		Overhaul Kit - Roller	0	<b>40.30</b>	
---	----------------	--	-----------------------	---	--------------	--

*Tech Note: Includes 2 ea.: R302-5 Grease Fittings, R303558 Bearings, & R305115 Seals:*

9	<b>R101395</b>		Overhaul Kit - UHMW Roller	0	<b>41.15</b>	
---	----------------	--	----------------------------	---	--------------	--

*Tech Note: Fits all R&R 2" Dia. Black UHMW Polyethylene Rollers. Includes 10 ea.: R150322 Roll Pins; 2 ea.: R3296-15 Locknuts, R150347T Teflon Seals, R150333 Thrust Washers, & R150334A Bronze Thrust Washers:*

### Other Parts Available

20	<b>R305115</b>	RET15219	Seal - Roller	2	<b>5.35</b>	
----	----------------	----------	---------------	---	-------------	--

21	<b>R303558</b>	RET15220	Bearing - Roller	2	<b>14.60</b>	
----	----------------	----------	------------------	---	--------------	--

All original equipment manufacturers names and part numbers are used for identification purposes only, and we are in no way implying that our products are original equipment parts. Prices subject to change without notice.



# Replaces R&R Products Greens Max

## 4018 Parts

Cutting Unit  
Rollers



Item No	R&R Part No.	OEM Part No.	Description	Qty Req	Price Each	Order Quantity
22	<b>R150651</b>		Spacer - 2-3/8 Roller	34	<b>0.87</b>	
23	<b>R150652</b>	R325262	Washer - 2 Roller	33	<b>0.84</b>	
24	<b>R302-5</b>	R173-0, R21-6010, R255825, R302-37, R302-47, R302-57, R302-58, R302-6, R31-0300, R32-9660, R471214, R471223, R471226, R60-0800, R62-3880, R92-4181, RJD7797, RJD7842, RJD7844, RM0004	Fitting - Grease	2	<b>0.27</b>	
25	<b>R101481</b>	R311839, R364082	Bearing - Roller	2	<b>29.40</b>	
<i>Tech Note: Fits R&amp;R Machined Grooved Roller &amp; Smooth (19 lbs) Roller:</i>						
26	<b>R3296-15</b>	367029, R1503473, R32118-5, R32127-23, R32127-47, R367029, R445748, RG-371, RN101345	Locknut - 3/4-16 Nylon Jam	2	<b>2.15</b>	
27	<b>R150347T</b>	R150347	Seal - Nonstick Lip	2	<b>6.05</b>	
28	<b>R150334A</b>		Washer - Thrust SAE660 Bronze	2	<b>5.80</b>	
29	<b>R150323</b>		Washer - Thrust Outer Keyed	2	<b>5.15</b>	

All original equipment manufacturers names and part numbers are used for identification purposes only, and we are in no way implying that our products are original equipment parts. Prices subject to change without notice.



# Replaces R&R Products Greens Max

## 4018 Parts

*Cutting Unit  
Rollers*



Item No	R&R Part No.	OEM Part No.	Description	Qty Req	Price Each	Order Quantity
30	<b>R150650</b>		Roller End - 2 Repairable	2	<b>54.25</b>	
31	<b>R150690</b>	R108-0989, R415509	Screw - Set 1/4-20 x 1/4	4	<b>0.78</b>	
32	<b>R102030</b>	RET16251	Shaft - Front Roller	1	<b>45.30</b>	
33	<b>R101331</b>		Shaft - 1 SS Front Roller	1	<b>66.85</b>	

All original equipment manufacturers names and part numbers are used for identification purposes only, and we are in no way implying that our products are original equipment parts. Prices subject to change without notice.