

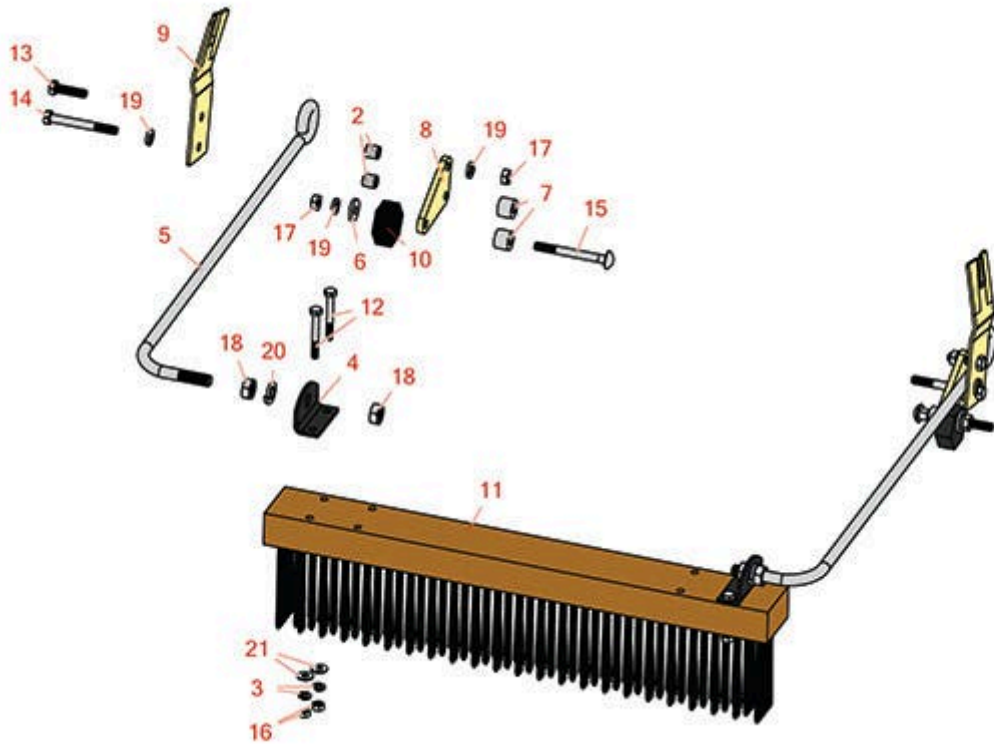


Replaces R&R Products Greens Max

4018 Parts

Cutting Unit

Brush Kit



All original equipment manufacturers names and part numbers are used for identification purposes only, and we are in no way implying that our products are original equipment parts. Prices subject to change without notice.



Replaces R&R Products Greens Max

4018 Parts

Cutting Unit
Brush Kit



| Item No | R&R Part No. | OEM Part No. | Description | Qty Req | Price Each | Order Quantity |
|---------|-----------------|---|-------------------------------|---------|---------------|----------------|
| 1 | R68611 | | Push Brush Attachment - 22 in | 1 | 450.95 | |
| 2 | R3000441 | | Spacer | 4 | 5.65 | |
| 3 | R3253-3 | 446130, R01-166-0070, R01-166-0410, R23-9-GD, R24-7150, R352-167, R446128, R446130 | Washer - Lock 1/4 | 4 | 0.11 | |
| 4 | R351667 | | Plate - Mounting | 2 | 7.05 | |
| 5 | R351668 | | Rod - Brush Mounting | 2 | 54.25 | |
| 6 | R364441 | 364441, R303873, R366641 | Washer - Flat 5/16x7/8 | 2 | 2.15 | |
| 7 | R366737 | | Spacer - Wheel | 4 | 6.80 | |
| 8 | R367569 | | Plate - Mounting | 2 | 12.45 | |
| 9 | R367591 | | Spring Plate - Brush | 2 | 40.65 | |
| 10 | R367613 | | Cam - Brush | 2 | 34.65 | |
| 11 | R391235 | | Brush - 18/22 in Nylon Push | 1 | 144.90 | |
| 12 | R400120 | 400120, R01-150-0990, R01-178-0416, R02-150-0990, R321-11, R3222-4, R513327, R908470 | Bolt - Hex HD 1/4-20 x 2 | 4 | 0.79 | |

All original equipment manufacturers names and part numbers are used for identification purposes only, and we are in no way implying that our products are original equipment parts. Prices subject to change without notice.



Replaces R&R Products Greens Max

4018 Parts

Cutting Unit
Brush Kit



| Item No | R&R Part No. | OEM Part No. | Description | Qty Req | Price Each | Order Quantity |
|---------|----------------|--|-----------------------------------|---------|-------------|----------------|
| 13 | R400190 | R01-150-0720, R01-178-0510, R30-8680, R322-6, R513343 | Bolt - Hex HD 5/16-18 x 1-1/4 GR5 | 2 | 0.40 | |
| 14 | R400216 | | Bolt - Hex HD 5/16-18 x 2-3/4 | 2 | 1.10 | |
| 15 | R441687 | 441687 | Bolt - Carriage 5/16-18 x 3 | 2 | 1.65 | |
| 16 | R443102 | R01-188-0420, R22-11-AJD, R3217-5 | Nut - 1/4-20 Yellow Zinc | 4 | 0.22 | |
| 17 | R443106 | 3218-2, 443106, R01-188-0518, R09003, R22-12-AJD, R32111-4, R3217-4, R3217-6, R513295, R513412, R915112P, R915978, R915979 | Nut - 5/16-18 Y/Zinc Plated | 4 | 0.19 | |
| 18 | R443118 | R01-188-0813, R22-15-AJD, R3217-9 | Nut - 1/2-13 Zinc | 4 | 0.39 | |
| 19 | R446136 | 446136, R446134 | Washer - Lock 5/16 Zinc | 6 | 0.14 | |
| 20 | R446154 | R446152 | Washer - Lock 1/2 | 2 | 0.26 | |
| 21 | R453023 | R3256-1, R3256-72 | Washer - Flat 1/4 | 4 | 0.12 | |

All original equipment manufacturers names and part numbers are used for identification purposes only, and we are in no way implying that our products are original equipment parts. Prices subject to change without notice.