

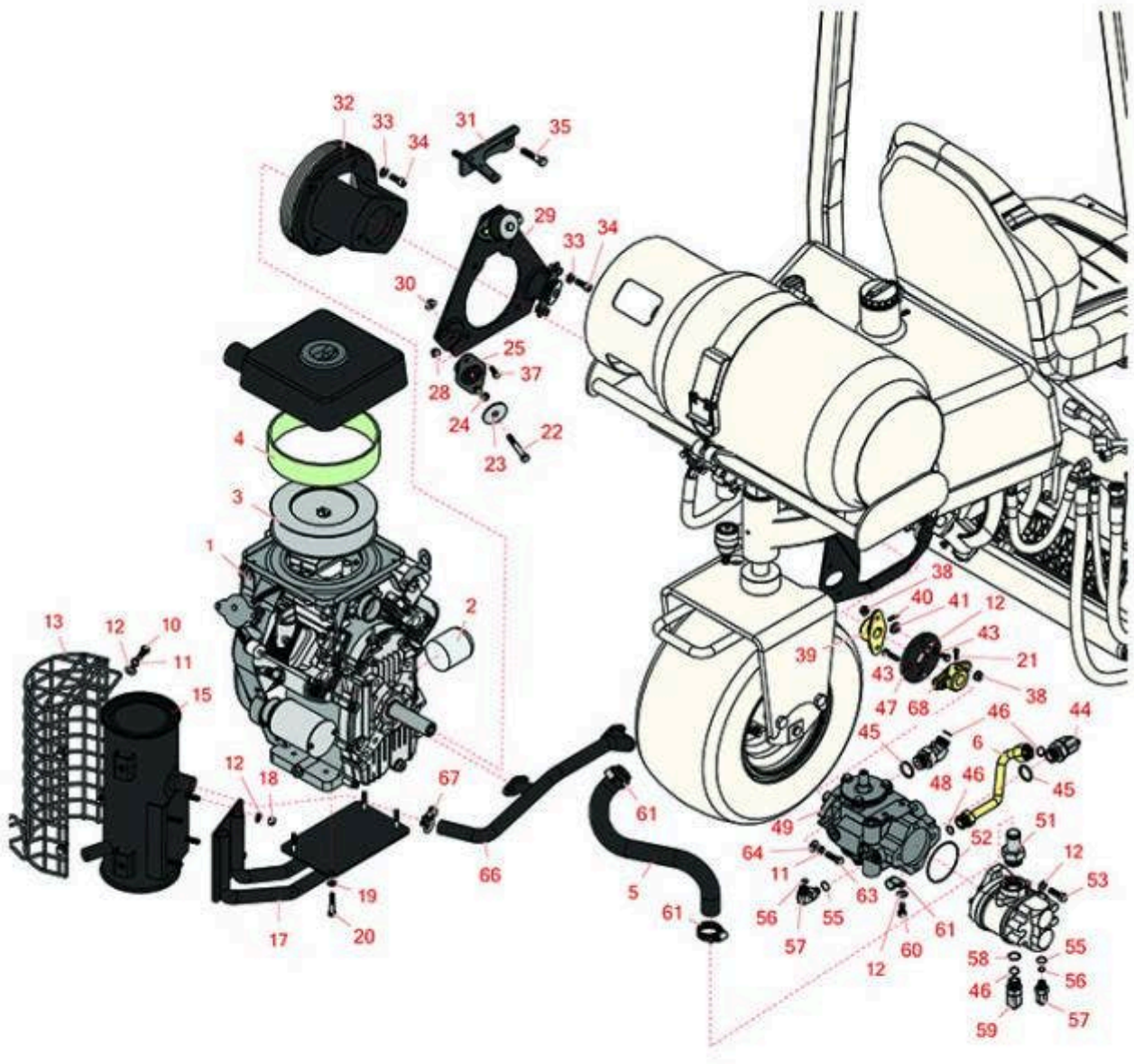


# Replaces R&R Products Greens Max

## 2200LP Parts

*Traction Unit*

*Engine & Hydrostat*



All original equipment manufacturers names and part numbers are used for identification purposes only, and we are in no way implying that our products are original equipment parts. Prices subject to change without notice.



# Replaces R&R Products Greens Max

## 2200LP Parts

Traction Unit  
Engine & Hydrostat



| Item No | R&R Part No. | OEM Part No. | Description | Qty Req | Price Each | Order Quantity |
|---------|--------------|--------------|-------------|---------|------------|----------------|
|---------|--------------|--------------|-------------|---------|------------|----------------|

### Engine

|   |                       |  |                 |   |                |  |
|---|-----------------------|--|-----------------|---|----------------|--|
| 1 | <b>RAKFH601DES01S</b> |  | Kawasaki Engine | 1 | <b>1749.30</b> |  |
|---|-----------------------|--|-----------------|---|----------------|--|

### Filters

|   |                      |               |                             |   |              |  |
|---|----------------------|---------------|-----------------------------|---|--------------|--|
| 2 | <b>RAK49065-2078</b> |               | Kawasaki Oil Filter (2078S) | 1 | <b>11.60</b> |  |
| 3 | <b>RAK11013-0728</b> | RAK11013-7011 | Kawasaki Element-Air Filter | 1 | <b>12.70</b> |  |
| 4 | <b>RAK11013-7007</b> |               | Element - Foam              | 1 | <b>15.90</b> |  |

### Hoses

|   |                  |  |                     |   |              |  |
|---|------------------|--|---------------------|---|--------------|--|
| 5 | <b>R105-8285</b> |  | Hose - Inlet - Pump | 1 | <b>66.30</b> |  |
| 6 | <b>R105-8307</b> |  | Tube-Hyd, Traction  | 1 | <b>50.55</b> |  |

### Other Parts Available

|    |                 |  |                                 |   |             |  |
|----|-----------------|--|---------------------------------|---|-------------|--|
| 10 | <b>R323-6</b>   | 323-6,<br>R01-150-0010,<br>R01-178-0608,<br>R20-47-AD,<br>R20-47-AGD,<br>R3224-2,<br>R49-3510,<br>R908034P,<br>R908332 | Bolt - Hex HD 3/8-16 x 1 GR5 YZ | 4 | <b>0.59</b> |  |
| 11 | <b>R3253-21</b> | 3253-21,<br>R215-51,<br>R30-8470,<br>R7-1912,<br>RMT3949   | Washer - Lock 3/8               | 6 | <b>0.14</b> |  |

All original equipment manufacturers names and part numbers are used for identification purposes only, and we are in no way implying that our products are original equipment parts. Prices subject to change without notice.



# Replaces R&R Products Greens Max

## 2200LP Parts

Traction Unit  
Engine & Hydrostat



| Item No | R&R Part No.        | OEM Part No.  | Description                  | Qty Req | Price Each    | Order Quantity |
|---------|---------------------|---|------------------------------|---------|---------------|----------------|
| 12      | <b>R453011</b>      | 3256-24,<br>453011,<br>R01-166-0100,<br>R01-166-0120,<br>R01-166-0270,<br>R01-166-0500,<br>R01-166-0600,<br>R01-166-0620,<br>R132-4593,<br>R237-12,<br>R24-10-AD,<br>R24-11-AD,<br>R24-11-BD,<br>R24-12-AD,<br>R24-12-BD,<br>R30-9310,<br>R32-8190,<br>R3256-24,<br>R3256-3,<br>R3256-36,<br>R3256-4,<br>R47-9950 | Washer - Flat 3/8 SAE Y/Zinc | 11      | <b>0.11</b>   |                |
| 13      | <b>R112-0291</b>    |   | Shield - Muffler             | 1       | <b>30.95</b>  |                |
| 15      | <b>R110-4001</b>    |   | Muffler                      | 1       | <b>407.10</b> |                |
| 17      | <b>R112-9196-03</b> |   | Mount-Muffler                | 1       | <b>130.60</b> |                |
| 18      | <b>R32152-2</b>     | R7-2306   | Nut-Lock, Cone               | 4       | <b>1.10</b>   |                |
| 19      | <b>R453009</b>      | 3256-3,<br>R01-166-0400,<br>R24-10-BD,<br>R24-9-AD,<br>R24H1136,<br>R32-9650,<br>R3256-2,<br>R3256-23,<br>R3256-67,<br>R3290-217,<br>R3556-3,<br>R4-2390,<br>R452006,<br>R7-0152  | Washer - Flat 5/16 SAE       | 4       | <b>0.13</b>   |                |

All original equipment manufacturers names and part numbers are used for identification purposes only, and we are in no way implying that our products are original equipment parts. Prices subject to change without notice.



# Replaces R&R Products Greens Max

## 2200LP Parts

*Traction Unit  
Engine & Hydrostat*



| Item No | R&R Part No.        | OEM Part No.  | Description                      | Qty Req | Price Each    | Order Quantity |
|---------|---------------------|---|----------------------------------|---------|---------------|----------------|
| 20      | <b>R101344</b>      | R322-8,<br>R400194  | Bolt - Hex HD 5/16-18 x 1-3/4    | 4       | <b>1.25</b>   |                |
| 21      | <b>R3241-6</b>      |   | Screw - Set Sq. HD. 1/4 x3/4     | 4       | <b>1.20</b>   |                |
| 22      | <b>R101526</b>      | 321-11,<br>R01-150-0970,<br>R01-178-0620,<br>R20-53-AGD,<br>R3224-8,<br>R323-12,<br>R323-31,<br>R323-47 | Bolt - Hex HD 3/8-16 x 2-1/2 GR5 | 3       | <b>0.91</b>   |                |
| 23      | <b>R83-1040</b>     |   | Washer - Engine                  | 3       | <b>2.30</b>   |                |
| 24      | <b>R83-1050</b>     |   | Spacer                           | 2       | <b>5.40</b>   |                |
| 25      | <b>R93-5265</b>     | R107-2560,<br>R125-5244,<br>R366879   | Mount - Engine                   | 3       | <b>53.25</b>  |                |
| 28      | <b>R445722</b>      | R30-8980,<br>R32128-2,<br>R32128-20   | Nut - Serrated Washer            | 6       | <b>0.66</b>   |                |
| 29      | <b>R85-8120-03</b>  | R85-8120  | Mounting Plate - Engine          | 1       | <b>58.55</b>  |                |
| 30      | <b>R32128-43</b>    | R30-8990,<br>R3290-357  | Nut - Flanged Whiz - 3/8-16      | 2       | <b>0.62</b>   |                |
| 31      | <b>R105-4307-03</b> |   | Bracket-Spring                   | 1       | <b>24.10</b>  |                |
| 32      | <b>R83-1060-03</b>  | R83-1060  | Adapter - Pump                   | 1       | <b>133.95</b> |                |
| 33      | <b>R3253-6</b>      | R01-166-0710,<br>R23-12-GD,<br>R59-7590,<br>RF4076  | Washer - Lock 7/16 Zinc          | 4       | <b>0.29</b>   |                |
| 34      | <b>R3274-7</b>      |   | Bolt - Soc HD Cap 3/8-16 x 1     | 2       | <b>1.40</b>   |                |
| 35      | <b>R324-8</b>       | R01-178-0716  | Bolt - Hx HD 7/16-14 x 2         | 2       | <b>3.85</b>   |                |

All original equipment manufacturers names and part numbers are used for identification purposes only, and we are in no way implying that our products are original equipment parts. Prices subject to change without notice.



# Replaces R&R Products Greens Max

## 2200LP Parts

Traction Unit  
Engine & Hydrostat



| Item No | R&R Part No.     | OEM Part No.   | Description                          | Qty Req | Price Each     | Order Quantity |
|---------|------------------|--|--------------------------------------|---------|----------------|----------------|
| 37      | <b>R322-3</b>    | R01-150-1420,<br>R01-178-0506,<br>R09109,<br>R20-24-AD,<br>R20-24-AGD,<br>R48-9270,<br>R513339,<br>R908017P,<br>RB311201 | Bolt - Hex HD 5/16-18 x 3/4          | 6       | <b>0.62</b>    |                |
| 38      | <b>R3296-39</b>  | 3296-39,<br>R32127-25,<br>R32128-36,<br>R3296-17,<br>R3296-22,<br>R915663P,<br>R99-7443                                  | Locknut - 3/8-16 Nylon               | 4       | <b>1.40</b>    |                |
| 39      | <b>R27-1960</b>  | R110-5236  | Hub - Engine                         | 2       | <b>35.25</b>   |                |
| 40      | <b>R3241-7</b>   |  | Set Screw - 1/4-20 x 1/2 Sq HD Nyloc | 4       | <b>2.35</b>    |                |
| 41      | <b>R27-6600</b>  |  | Spacer - Pump Coupling               | 4       | <b>3.20</b>    |                |
| 43      | <b>R400190</b>   | R01-150-0720,<br>R01-178-0510,<br>R30-8680,<br>R322-6,<br>R513343  | Bolt - Hex HD 5/16-18 x 1-1/4 GR5    | 4       | <b>0.40</b>    |                |
| 44      | <b>R340-139</b>  |  | Hydraulic Fitting - 90 Deg           | 1       | <b>66.30</b>   |                |
| 45      | <b>R237-81</b>   |  | O-Ring                               | 1       | <b>2.30</b>    |                |
| 46      | <b>R237-65</b>   |  | O-Ring                               | 1       | <b>0.65</b>    |                |
| 47      | <b>R44-2230</b>  | R115-4523,<br>R27-6560,<br>R80-8650  | Coupling - Rubber - Pump             | 1       | <b>24.55</b>   |                |
| 48      | <b>R340-156</b>  |  | Hydraulic Fitting                    | 1       | <b>41.90</b>   |                |
| 49      | <b>R105-0494</b> | R100-3174,<br>R98-4609   | Hydrostat Assy                       | 1       | <b>2027.75</b> |                |

All original equipment manufacturers names and part numbers are used for identification purposes only, and we are in no way implying that our products are original equipment parts. Prices subject to change without notice.



# Replaces R&R Products Greens Max

## 2200LP Parts

*Traction Unit  
Engine & Hydrostat*



| Item No | R&R Part No.     | OEM Part No.   | Description                      | Qty Req | Price Each    | Order Quantity |
|---------|------------------|--|----------------------------------|---------|---------------|----------------|
| 51      | <b>R354-78</b>   |  | Connector-Hose                   | 1       | <b>27.35</b>  |                |
| 52      | <b>R353-949</b>  | R60-3520   | O-Ring                           | 1       | <b>1.40</b>   |                |
| 53      | <b>R3274-1</b>   |  | Bolt - 3/8-16 x 1 1/4 Soc HD Cap | 2       | <b>4.95</b>   |                |
| 55      | <b>R237-79</b>   |  | O-Ring                           | 2       | <b>1.50</b>   |                |
| 56      | <b>R237-22</b>   | R107-8844,<br>R232-72,<br>R237-78  | O-Ring                           | 2       | <b>0.62</b>   |                |
| 57      | <b>R340-18</b>   |  | Hydraulic Fitting                | 2       | <b>20.95</b>  |                |
| 58      | <b>R237-80</b>   | R327-80  | O-Ring                           | 1       | <b>1.85</b>   |                |
| 59      | <b>R340-17</b>   |  | No 10 Male Orfs x No 10 Male Orb | 1       | <b>23.45</b>  |                |
| 60      | <b>R400258</b>   | R01-150-0800,<br>R01-178-0600,<br>R01-178-0606,<br>R20-45-AD,<br>R31-0200,<br>R31-9910,<br>R3224-1,<br>R323-4  | Bolt - Hex HD 3/8-16 x 3/4       | 1       | <b>0.51</b>   |                |
| 61      | <b>R2412-41</b>  |  | Clamp                            | 1       | <b>4.80</b>   |                |
| 63      | <b>R400264</b>   | 323-7,<br>R01-150-0180,<br>R01-178-0610,<br>R19H1732,<br>R20-48-AD,<br>R20-48-AGD,<br>R32-9160,<br>R3224-3,<br>R323-29,<br>R323-7,<br>R400264,<br>R908035P | Bolt - Hex HD 3/8-16 x 1-1/4     | 2       | <b>0.40</b>   |                |
| 64      | <b>R100-4852</b> |  | Washer - Hardened                | 2       | <b>4.15</b>   |                |
| 66      | <b>R108-6539</b> | R83-1080   | Exhaust Manifold                 | 1       | <b>123.95</b> |                |

All original equipment manufacturers names and part numbers are used for identification purposes only, and we are in no way implying that our products are original equipment parts. Prices subject to change without notice.



# Replaces R&R Products Greens Max

## 2200LP Parts

*Traction Unit*

*Engine & Hydrostat*



| Item No | R&R Part No.     | OEM Part No.              | Description                 | Qty Req | Price Each   | Order Quantity |
|---------|------------------|---------------------------|-----------------------------|---------|--------------|----------------|
| 67      | <b>R2412-37</b>  | R01-170-0150,<br>R2112-11 | Clamp - Muffler 1-1/4       | 1       | <b>3.55</b>  |                |
| 68      | <b>R110-5227</b> | R93-2589                  | Hub - Hydro Pump - 7/8 Bore | 1       | <b>32.50</b> |                |

All original equipment manufacturers names and part numbers are used for identification purposes only, and we are in no way implying that our products are original equipment parts. Prices subject to change without notice.