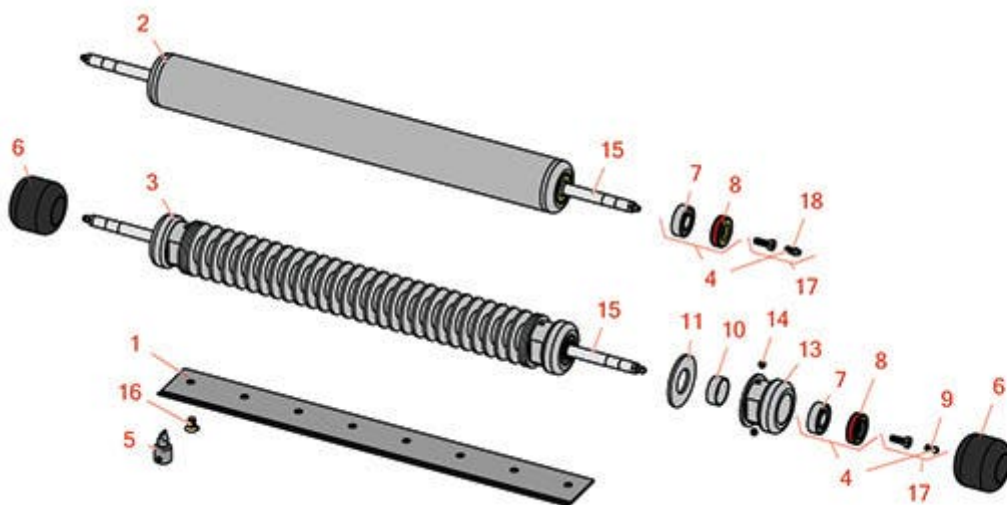




# Replaces Ransomes Auto Certes Parts

Cutting Unit  
Reel & Bedknife



All original equipment manufacturers names and part numbers are used for identification purposes only, and we are in no way implying that our products are original equipment parts. Prices subject to change without notice.



# Replaces Ransomes Auto Certes Parts

Cutting Unit  
Reel & Bedknife



Item No	R&R Part No.	OEM Part No.	Description	Qty Req	Price Each	Order Quantity
---------	--------------	--------------	-------------	---------	------------	----------------

## R&R Bedknives, Lifetime Guaranteed

1	RMBA7051	MBA7051	Bedknife - Thin	1	48.80	
---	----------	---------	-----------------	---	-------	--

*Detail Description: R&R Bedknives are manufactured from high carbon-boron alloy steel and then hardened to RC46-49 to match the temper of our reel blades and original equipment reels. Bedknives are surface ground on the top and front edge and straightened three times before being packaged with oil for rust prevention. All R&R Bedknives now have an increased front edge grind for added life. All R&R Bedknives are guaranteed against defects in material and workmanship under normal use for the life of the part.:*

## R&R Rollers

2	R170400		Roller - Smooth Fits Auto Certes	1	175.35	
---	---------	--	----------------------------------	---	--------	--

2	R170405		Roller - Smooth Fits Sc	1	175.35	
---	---------	--	-------------------------	---	--------	--

3	R170705R		Roller - Grooved Repairable Steel	1	244.90	
---	----------	--	-----------------------------------	---	--------	--

3	R170725R		Roller - Grooved Repairable Steel	1	244.30	
---	----------	--	-----------------------------------	---	--------	--

## Overhaul Kits

4	R100130		Overhaul Kit - Roller	0	42.35	
---	---------	--	-----------------------	---	-------	--

*Detail Description: Includes 2 ea.: R302-5 Grease Fittings, R303558 Bearings, & R305115 Seals:*

5	R101272T		Bedknife Screw Driver Tool	0	37.45	
---	----------	--	----------------------------	---	-------	--

*Tech Note: Easily install and remove bed knife screws with the help of a ratchet. Tool manufactured with hardened alloy steel.:*

*Detail Description: Easily install and remove bed knife screws with the help of a ratchet. Tool manufactured with hardened alloy steel.:*

## Other Parts Available

6	R170706		Wheel - Outrigger	2	29.65	
---	---------	--	-------------------	---	-------	--

7	R303558		Bearing - Roller	2	12.25	
---	---------	--	------------------	---	-------	--

8	R305115		Seal - Roller	2	5.65	
---	---------	--	---------------	---	------	--

All original equipment manufacturers names and part numbers are used for identification purposes only, and we are in no way implying that our products are original equipment parts. Prices subject to change without notice.



## Replaces Ransomes Auto Certes Parts

*Cutting Unit  
Reel & Bedknife*



Item No	R&R Part No.	OEM Part No.	Description	Qty Req	Price Each	Order Quantity
9	<b>R302-5</b>		Fitting - Grease	2	<b>0.30</b>	
10	<b>R150651</b>		Spacer - 2-3/8 Roller	39	<b>0.91</b>	
11	<b>R150653</b>		Washer - 2-3/8 Roller	0	<b>1.20</b>	
13	<b>R150665</b>		Roller End - 2-3/8 Repairable	2	<b>64.95</b>	
14	<b>R150690</b>		Screw - Set 1/4-20 x 1/4	4	<b>0.82</b>	
15	<b>R170741</b>		Shaft - Fits Auto Certes	1	<b>66.85</b>	
15	<b>R170742</b>		Shaft - Fits Super Certes	1	<b>66.85</b>	
16	<b>RLSO2521G</b>	LSO2521G	Screw - Bedknife	8	<b>0.34</b>	
17	<b>R170728</b>	170728	Bolt - Special w/Fitting	2	<b>7.50</b>	
18	<b>R302-18</b>		Zerk - Grease Press Style	2	<b>0.52</b>	

All original equipment manufacturers names and part numbers are used for identification purposes only, and we are in no way implying that our products are original equipment parts. Prices subject to change without notice.