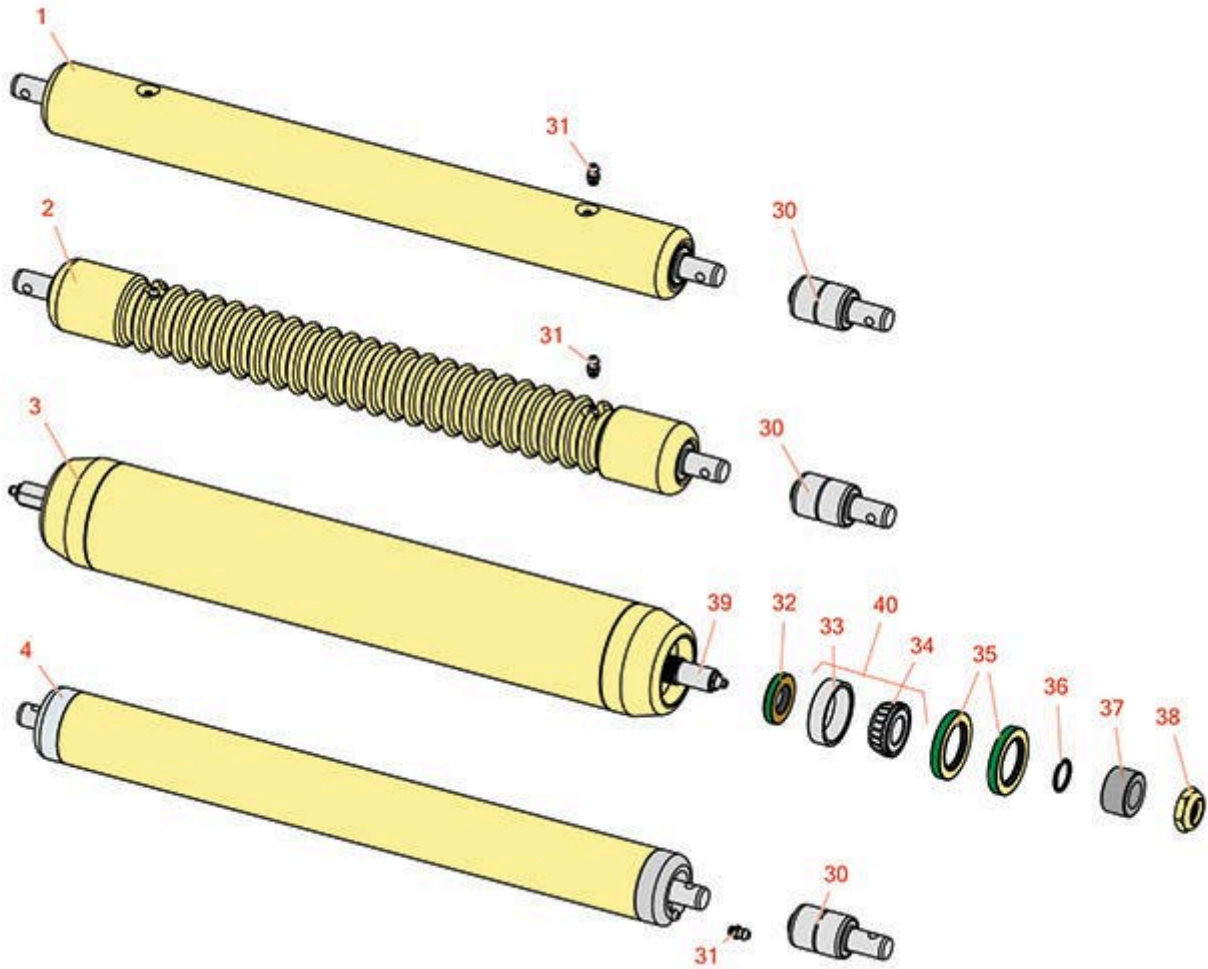




# Replaces John Deere 8000A E-Cut Hybrid Reel Mower Parts

Cutting Unit  
Rollers



All original equipment manufacturers names and part numbers are used for identification purposes only, and we are in no way implying that our products are original equipment parts. Prices subject to change without notice.



# Replaces John Deere 8000A E-Cut Hybrid Reel Mower Parts

Cutting Unit  
Rollers



Item No	R&R Part No.	OEM Part No.	Description	Qty Req	Price Each	Order Quantity
---------	--------------	--------------	-------------	---------	------------	----------------

## R&R Rollers

1	<b>RAMT2786</b>	AMT2786, AMT2981	Roller - Smooth Solid Steel	0	<b>199.30</b>	
---	-----------------	---------------------	-----------------------------	---	---------------	--

*Tech Note: Machined from solid steel, this heavy weight roller uses greasable "water-pump" style bearings.:*

2	<b>RAMT2784</b>	AMT2979	Roller - Grooved Machined Solid Steel	0	<b>225.35</b>	
---	-----------------	---------	---------------------------------------	---	---------------	--

*Tech Note: Machined from solid steel, this heavy weight roller uses greasable "water-pump" style bearings.:*

3	<b>RTCA19509</b>	TCA19509	Roller - Smooth Tubular Steel	0	<b>233.05</b>	
---	------------------	----------	-------------------------------	---	---------------	--

*Tech Note: Constructed with a through shaft, this heavy duty roller uses greasable tapered bearings for extended life.:*

4	<b>RTCA19656</b>	BM24203, TCA19656	Roller - Smooth Tubular Steel	0	<b>139.65</b>	
---	------------------	----------------------	-------------------------------	---	---------------	--

## Other Parts Avialable

30	<b>RAA35741</b>	AA35741, AET10129, TCA22836	Bearing	2	<b>18.80</b>	
----	-----------------	-----------------------------------	---------	---	--------------	--

*Tech Note: 1/4" Side Hole:*

31	<b>R302-5</b>	JD7797, JD7842, JD7844	Fitting - Grease	2	<b>0.27</b>	
----	---------------	------------------------------	------------------	---	-------------	--

32	<b>RET15756</b>	ET15756, MT1739, MT739	Seal	2	<b>5.45</b>	
----	-----------------	------------------------------	------	---	-------------	--

33	<b>R254-79</b>	JD8226	Cup - Bearing	2	<b>3.20</b>	
----	----------------	--------	---------------	---	-------------	--

*Tech Note: Use R254-79M installation mandrel to properly install race.:*

34	<b>R254-78</b>	JD8188	Tapered Bearing Cone	2	<b>6.05</b>	
----	----------------	--------	----------------------	---	-------------	--

All original equipment manufacturers names and part numbers are used for identification purposes only, and we are in no way implying that our products are original equipment parts. Prices subject to change without notice.



# Replaces John Deere 8000A E-Cut Hybrid Reel Mower Parts

*Cutting Unit  
Rollers*



Item No	R&R Part No.	OEM Part No.	Description	Qty Req	Price Each	Order Quantity
35	<b>RET15755</b>	ET15755	Seal - Oil	4	<b>5.15</b>	
36	<b>R237-54</b>	U46731, U6731	O-Ring - Small	2	<b>0.50</b>	
37	<b>RET15726</b>	ET15726, RET15726	Sleeve - Wear Hardened	2	<b>13.95</b>	
38	<b>R3296-15</b>	N101345	Locknut - 3/4-16 Nylon Jam	2	<b>2.15</b>	
39	<b>RTC26890</b>	TCU26890	Shaft - Roler	1	<b>49.20</b>	
40	<b>R500534</b>		Bearing - with Cup	2	<b>11.80</b>	

All original equipment manufacturers names and part numbers are used for identification purposes only, and we are in no way implying that our products are original equipment parts. Prices subject to change without notice.